

## Members' Library Service Request Form

Date of Document	03/03/22
Originator	Ian Lennox
Originator's Ref (if any)	
Document Title	New Reduced Speed Limits Map - Fa'side Area

Please indicate if access to the document is to be “unrestricted” or “restricted”, with regard to the terms of the Local Government (Access to Information) Act 1985.

Unrestricted	<input checked="" type="checkbox"/>	Restricted	<input type="checkbox"/>
--------------	-------------------------------------	------------	--------------------------

If the document is “restricted”, please state on what grounds (click on grey area for drop-down menu):

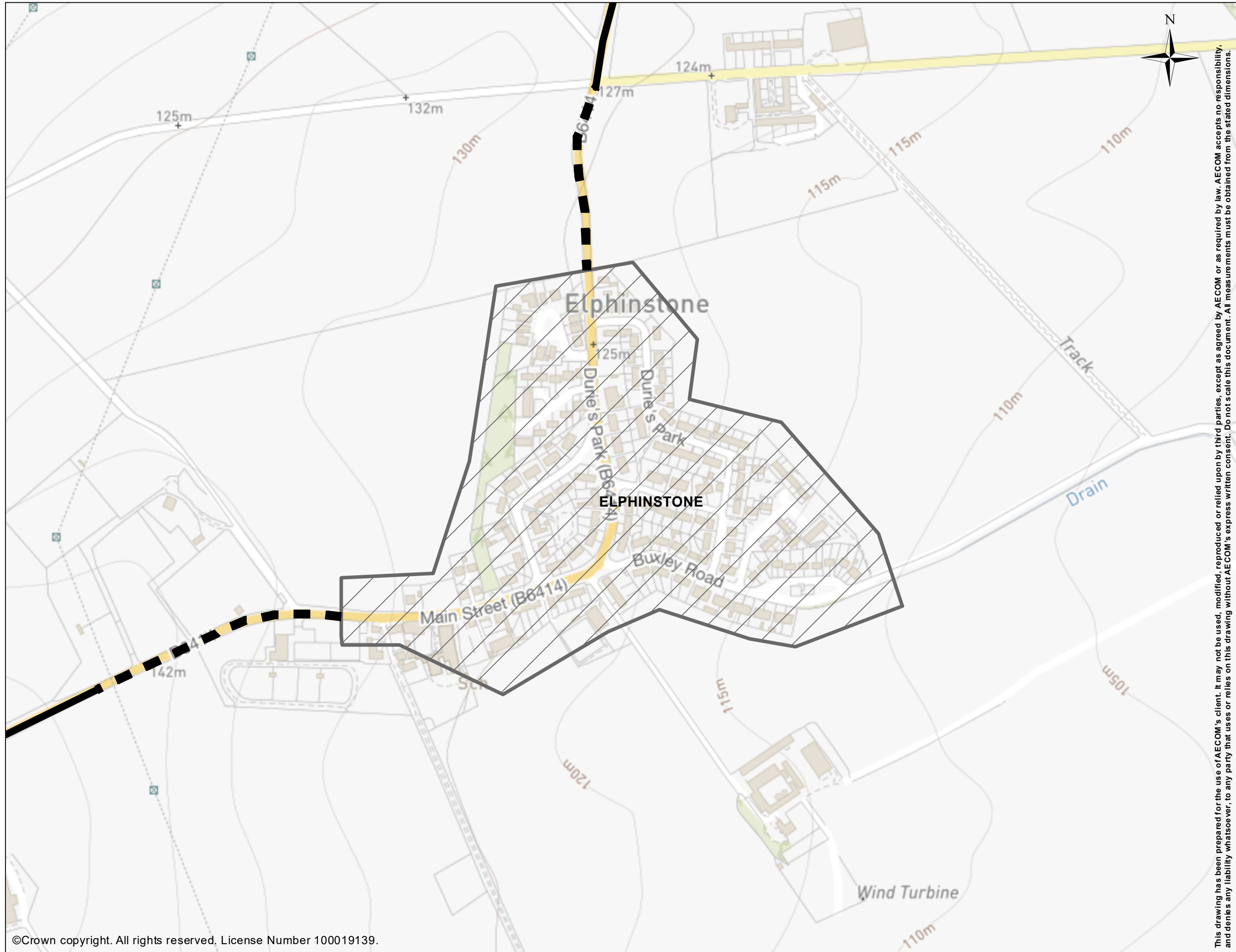
For Publication
-----------------

Additional information:

Part of appendix 1, sub appendix F, to Cabinet report dated 8 March 2022 entitled Updated Spaces for People Interventions

Authorised By	Tom Reid
Designation	Head of Infrastructure
Date	03/03/22

For Office Use Only:	
Library Reference	32/22
Date Received	03/03/22
Bulletin	Mar 2022



This drawing has been prepared for the use of AECOM's client. It may not be used, modified, reproduced or relied upon by third parties, except as agreed by AECOM or as required by law. AECOM accepts no responsibility, and denies any liability whatsoever, to any party that uses or relies on this drawing without AECOM's express written consent. Do not scale this document. All measurements must be obtained from the stated dimensions.

**PROJECT**  
 EAST LoTHIAN COUNCIL  
 REVIEW OF REDUCED SPEED  
 LIMITS

**CLIENT**



EAST LoTHIAN COUNCIL

**Legend**

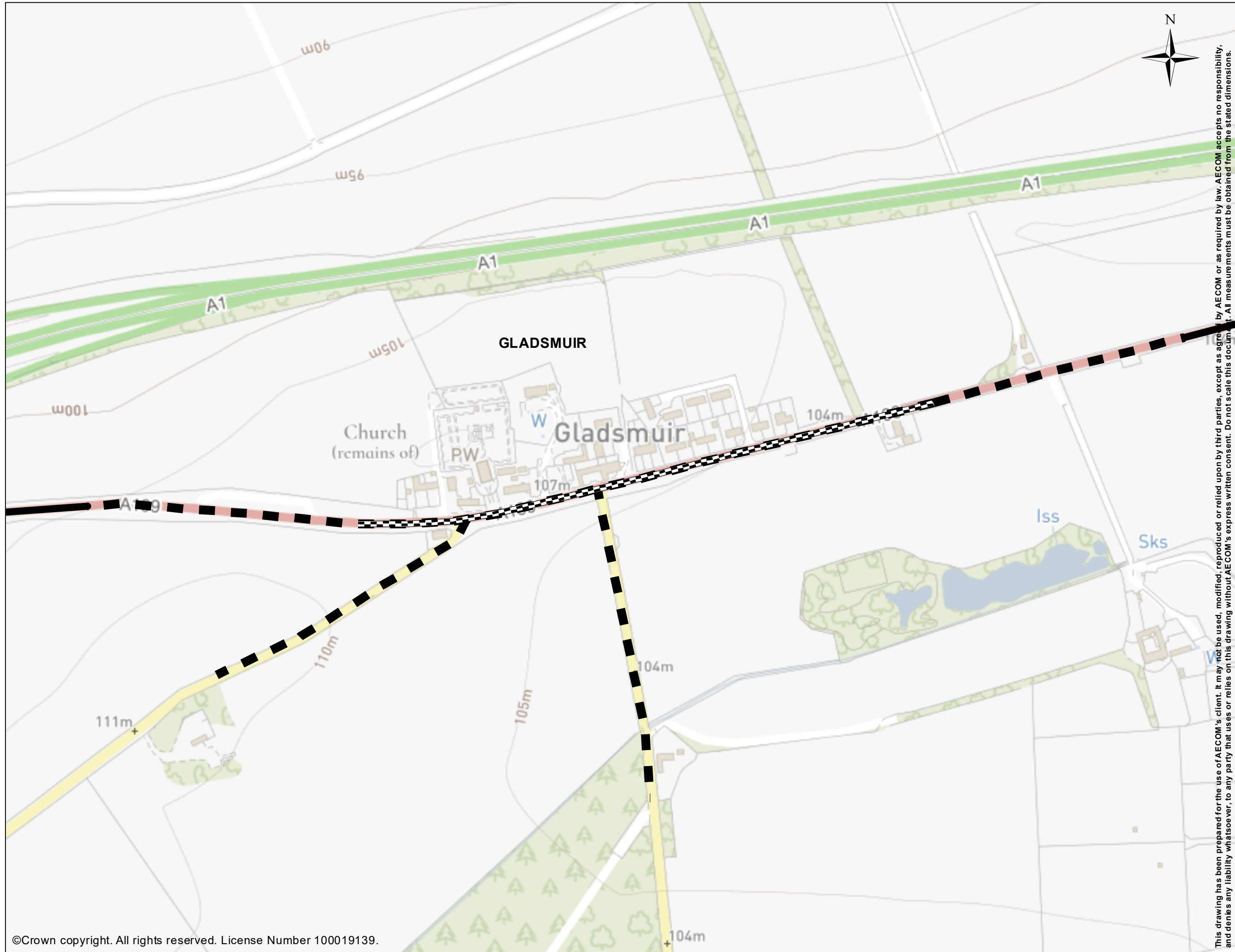
- 20mph Speed Limit
- 40mph Speed Limit
- National Speed Limit

**PROJECT NUMBER**

60638144

**SHEET TITLE**

ELPHINSTONE  
 NEW SPEED LIMITS



This drawing has been prepared for the use of AECOM's client. It may not be used, modified, reproduced or relied upon by third parties, except as agreed by AECOM or as required by law. AECOM accepts no responsibility, and denies any liability whatsoever, to any party that uses or relies on this drawing without AECOM's express written consent. Do not scale this document. All measurements must be obtained from the stated dimensions.

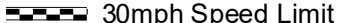
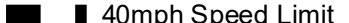

**PROJECT**  
 EAST LoTHIAN COUNCIL  
 REVIEW OF REDUCED SPEED  
 LIMITS

**CLIENT**



EAST LoTHIAN COUNCIL

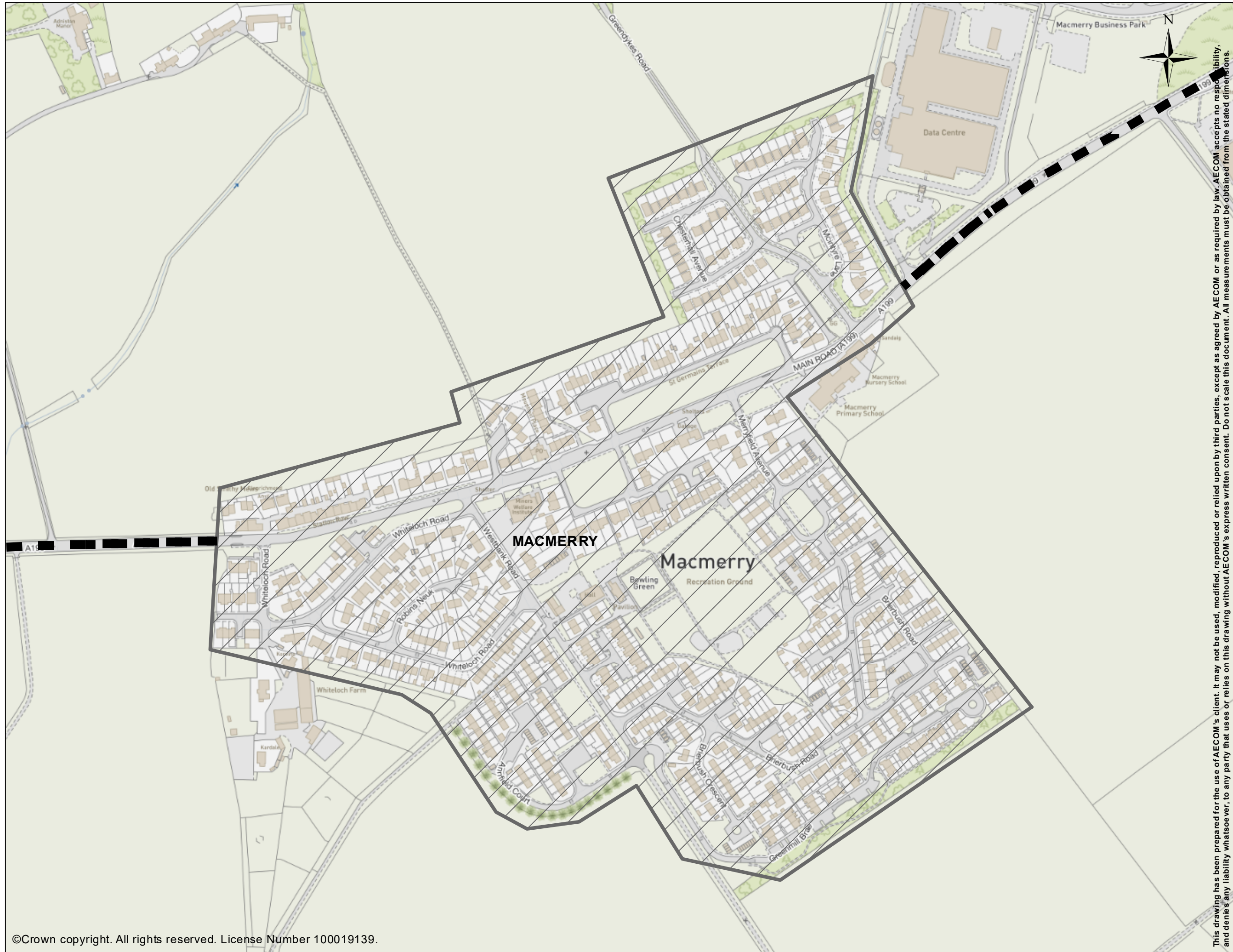
**Legend**

-  30mph Speed Limit
-  40mph Speed Limit
-  National Speed Limit

**PROJECT NUMBER**  
 60638144

**SHEET TITLE**  
 GLADSMUIR  
 NEW SPEED LIMITS





This drawing has been prepared for the use of AECOM's client. It may not be used, modified, reproduced or relied upon by third parties, except as agreed by AECOM or as required by law. AECOM accepts no responsibility, and denies any liability whatsoever, to any party that uses or relies on this drawing without AECOM's express written consent. Do not scale this document. All measurements must be obtained from the stated dimensions.


**PROJECT**  
 EAST LOTHIAN COUNCIL  
 REVIEW OF REDUCED SPEED  
 LIMITS


**CLIENT**



EAST LOTHIAN COUNCIL

**Legend**

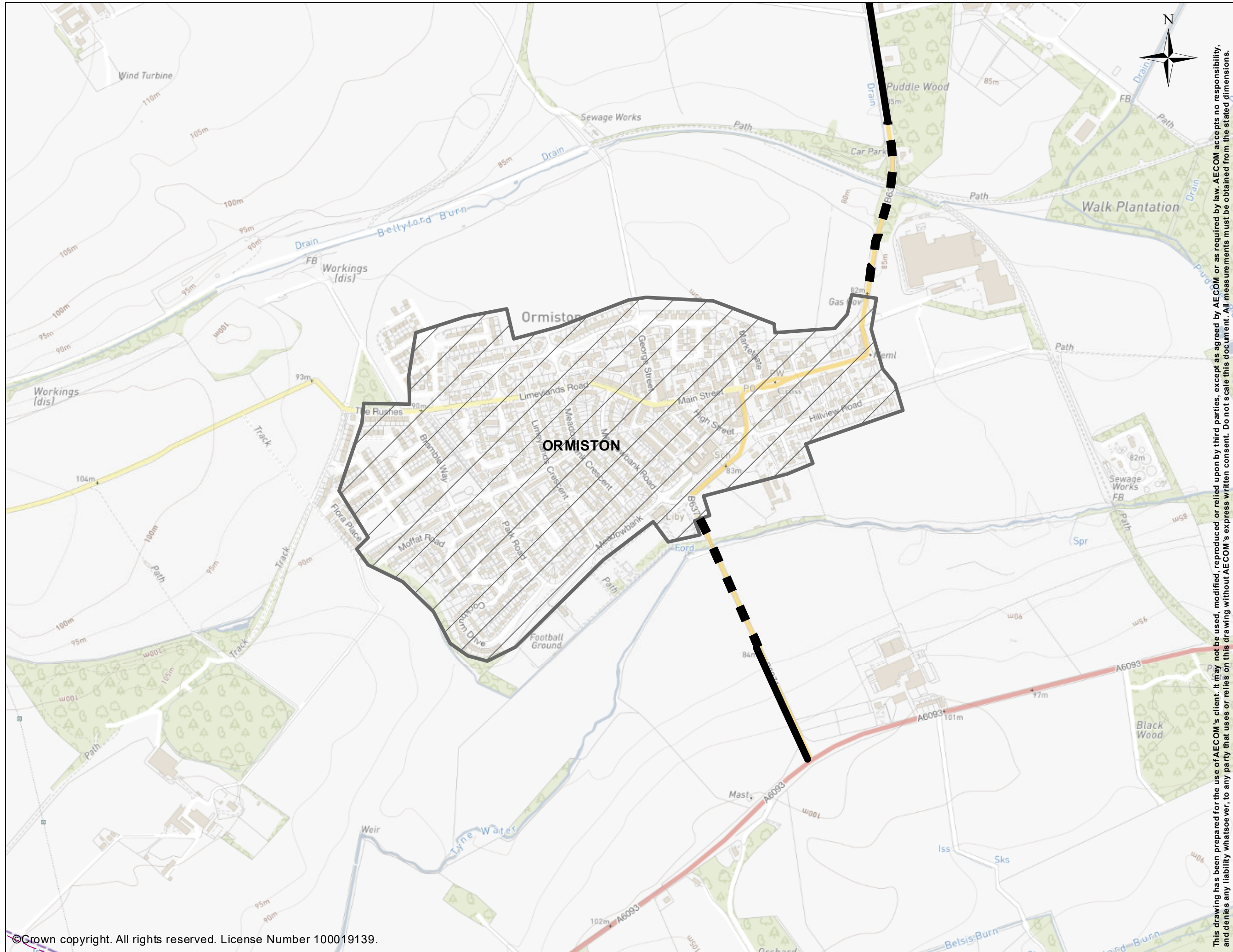
 20mph Speed Limit

 40mph Speed Limit

**PROJECT NUMBER**  
 60638144

**SHEET TITLE**  
 MACMERRY  
 NEW SPEED LIMITS








**PROJECT**  
 EAST LoTHIAN COUNCIL  
 REVIEW OF REDUCED SPEED  
 LIMITS

**CLIENT**



EAST LoTHIAN COUNCIL

- Legend**
-  20mph Speed Limit
  -  40mph Speed Limit
  -  National Speed Limit

**PROJECT NUMBER**

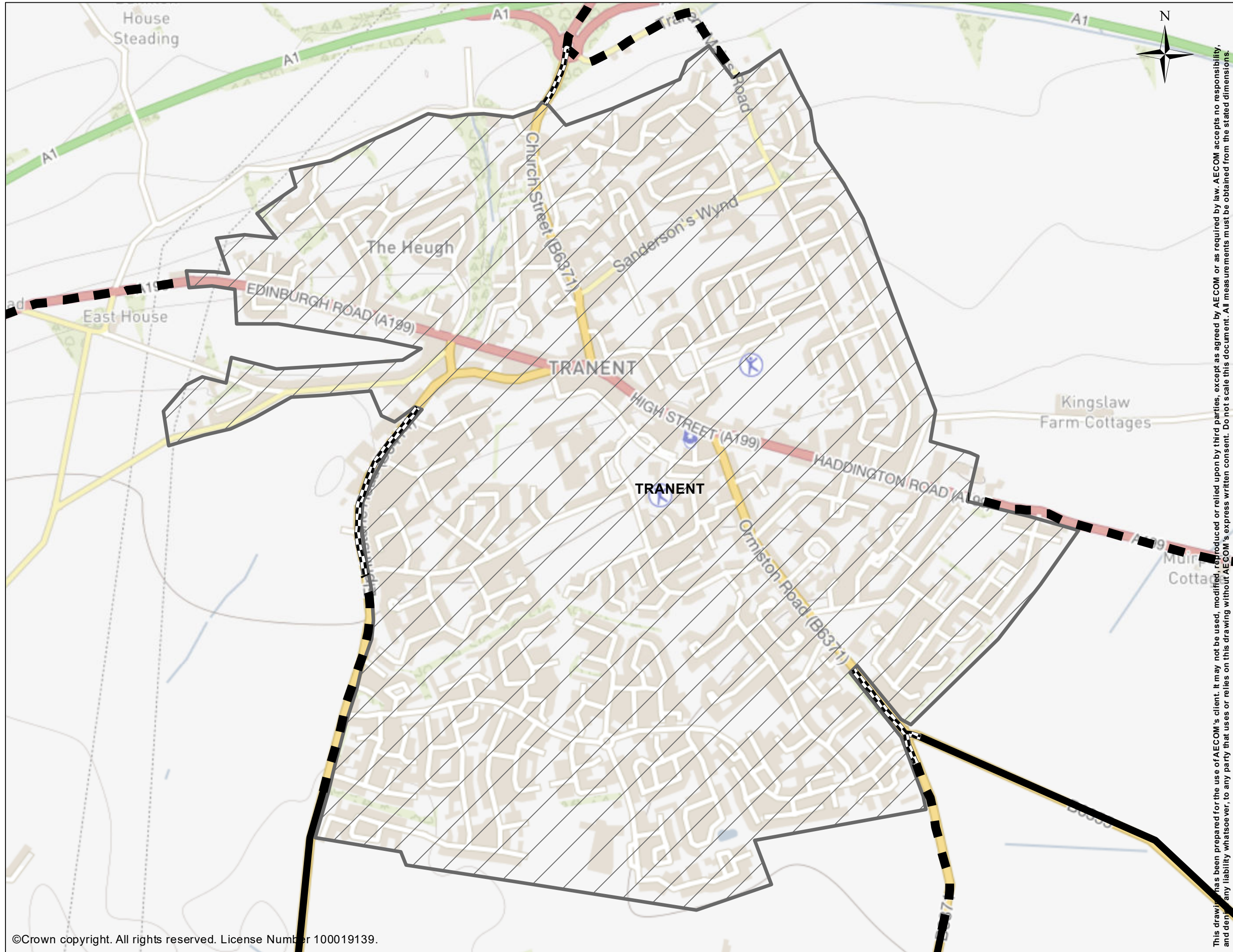
60638144

**SHEET TITLE**

ORMISTON  
 NEW SPEED LIMITS

This drawing has been prepared for the use of AECOM's client. It may not be used, modified, reproduced or relied upon by third parties, except as agreed by AECOM or as required by law. AECOM accepts no responsibility, and denies any liability whatsoever, to any party that uses or relies on this drawing without AECOM's express written consent. Do not scale this document. All measurements must be obtained from the stated dimensions.





This drawing has been prepared for the use of AECOM's client. It may not be used, modified, reproduced or relied upon by third parties, except as agreed by AECOM or as required by law. AECOM accepts no responsibility, and denies any liability whatsoever, to any party that uses or relies on this drawing without AECOM's express written consent. Do not scale this document. All measurements must be obtained from the stated dimensions.

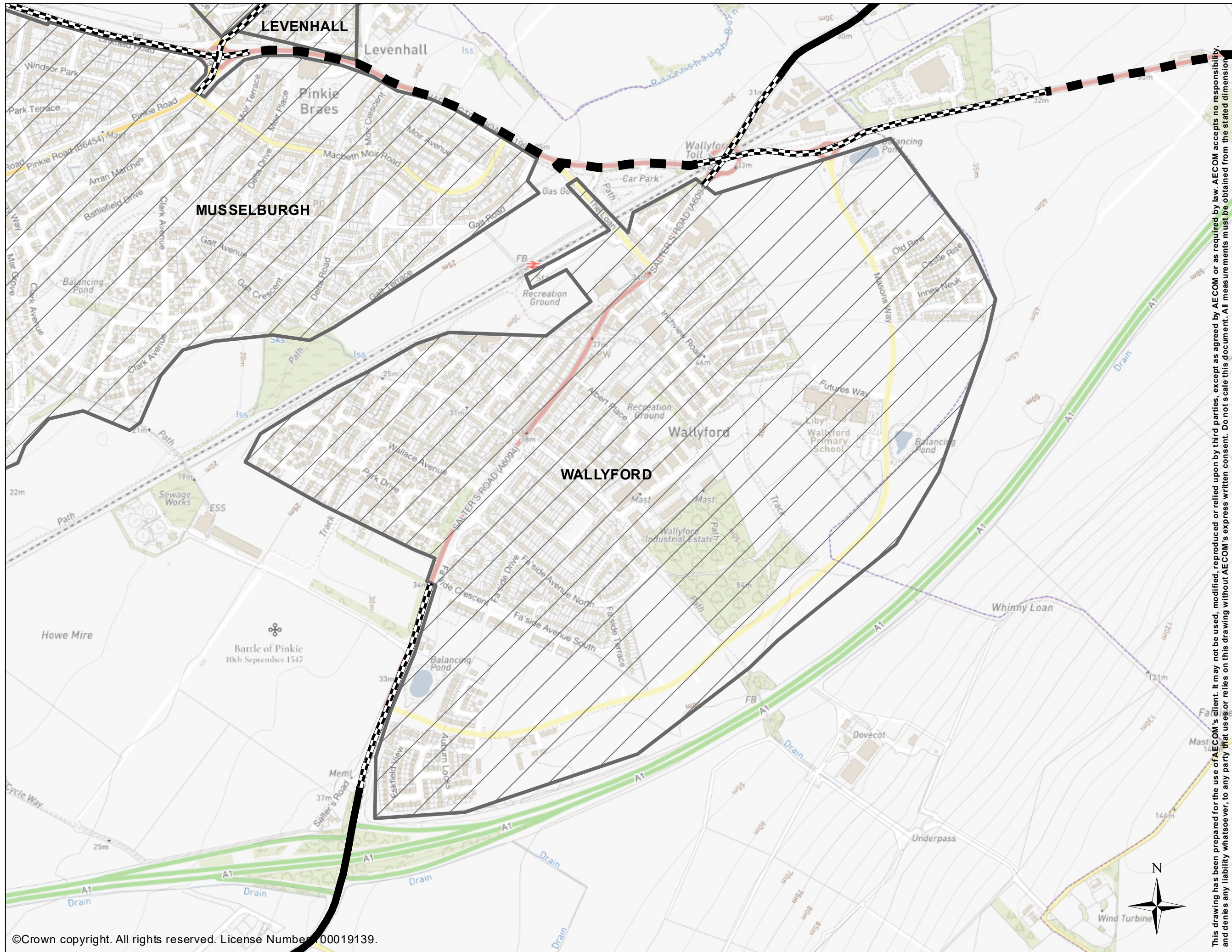
**PROJECT**  
EAST LOTHIAN COUNCIL  
REVIEW OF REDUCED SPEED  
LIMITS

**CLIENT**  
  
EAST LOTHIAN COUNCIL

**Legend**  
[Hatched Box] 20mph Speed Limit  
[Dashed Line] 30mph Speed Limit  
[Solid Line] 40mph Speed Limit  
[Thick Solid Line] National Speed Limit

**PROJECT NUMBER**  
60638144  
**SHEET TITLE**  
TRANENT  
NEW SPEED LIMITS





**PROJECT**  
 EAST LoTHIAN COUNCIL  
 REVIEW OF REDUCED SPEED  
 LIMITS



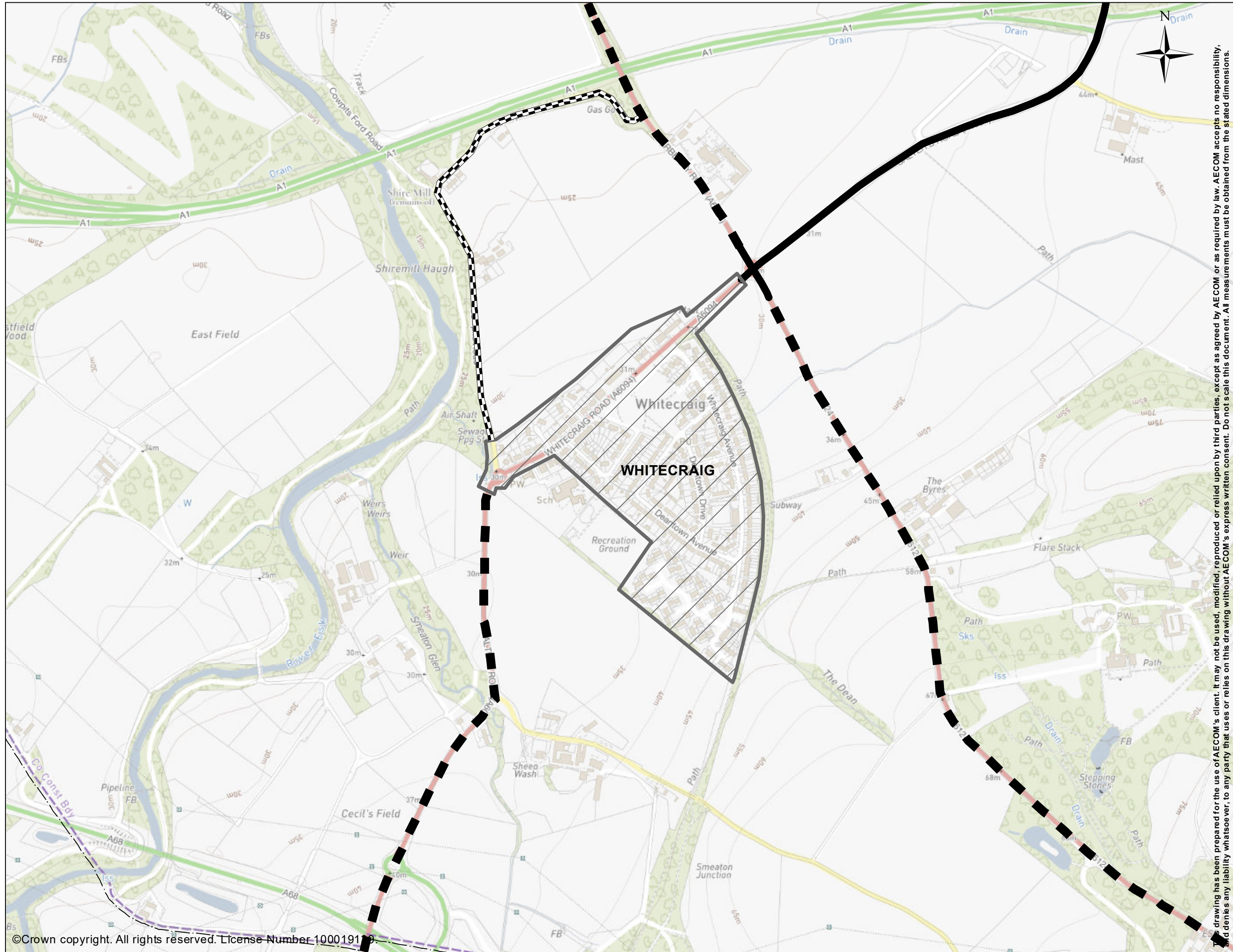
- Legend**
- 20mph Speed Limit
  - 30mph Speed Limit
  - 40mph Speed Limit
  - National Speed Limit

**PROJECT NUMBER**  
 60638144

**SHEET TITLE**  
 WALLYFORD  
 NEW SPEED LIMITS

This drawing has been prepared for the use of AECOM's client. It may not be used, modified, reproduced or relied upon by third parties, except as agreed by AECOM or as required by law. AECOM accepts no responsibility, and denies any liability whatsoever, to any party that uses or relies on this drawing without AECOM's express written consent. Do not scale this document. All measurements must be obtained from the stated dimension lines.





**PROJECT**


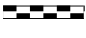


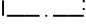
EAST LOTHIAN COUNCIL  
REVIEW OF REDUCED SPEED LIMITS

**CLIENT**



EAST LOTHIAN COUNCIL

**Legend**

-  20mph Speed Limit
-  30mph Speed Limit
-  40mph Speed Limit
-  National Speed Limit
-  ELC Local Authority Area

**PROJECT NUMBER**

60638144

**SHEET TITLE**

WHITECRAIG  
NEW SPEED LIMITS

This drawing has been prepared for the use of AECOM's client. It may not be used, modified, reproduced or relied upon by third parties, except as agreed by AECOM or as required by law. AECOM accepts no responsibility, and denies any liability whatsoever, to any party that uses or relies on this drawing without AECOM's express written consent. Do not scale this document. All measurements must be obtained from the stated dimensions.