

## Members' Library Service Request Form

Date of Document	17/12/20
Originator	Kirsty Macdiarmid, Public Protection Manager, East Lothian And Midlothian Public Protection Office
Originator's Ref (if any)	none
Document Title	East Lothian and Midlothian Public Protection Committee Annual Report, 2019-20

Please indicate if access to the document is to be "unrestricted" or "restricted", with regard to the terms of the Local Government (Access to Information) Act 1985.

Unrestricted	<input checked="" type="checkbox"/>	Restricted	<input type="checkbox"/>
--------------	-------------------------------------	------------	--------------------------

If the document is "restricted", please state on what grounds (click on grey area for drop-down menu):

For Publication
-----------------

Additional information:

This report was approved by the East Lothian and Midlothian Public Protection Committee on 17.12.20, and was reviewed by the Critical Services Oversight Group on 21.01.21.

Authorised By	Kirsty Macdiarmid
Designation	Public Protection Manager
Date	22/02/21

For Office Use Only:	
Library Reference	26/21
Date Received	23/02/21
Bulletin	Feb21

**REPORT TO:** Members' Library Service

**MEETING DATE:** February 2021

**BY:** Chief Social Work Officer

**SUBJECT:** East Lothian and Midlothian Public Protection Annual Report 2019-20

---

## **1 PURPOSE**

- 1.1 This report introduces the East Lothian and Midlothian Public Protection Committee (EMPPC) Annual Report 2019-20.

## **2 RECOMMENDATIONS**

- 2.1 Members are recommended to note the content of the East Lothian and Midlothian Public Protection Annual Report 2019-20.

## **3 BACKGROUND**

- 3.1 This annual report outlines some of the core work of the EMPPC and achievements during the 2019-20 reporting year, as well as identified areas of priority for the current year.
- 3.2 The annual report was approved by the East Lothian and Public Protection Committee on 17 December 2020, and presented to the Critical Services Oversight Group on 21 January 2021.
- 3.3 The East Lothian and Midlothian Public Protection Committee Annual Report would normally be reported to the Policy and Performance Review Committee (PPRC) in February each year. However, due to the COVID 19 response, East Lothian Council committees are currently working in Business Critical Mode, and as such, this report has instead been lodged in the Members' Library Service for noting by Elected Members. An update on business for the 2020-21 period will be provided to PPRC at a future committee meeting.

#### **4 POLICY IMPLICATIONS**

4.1 This report does not generate any known additional policy implications.

#### **5 INTEGRATED IMPACT ASSESSMENT**

5.1 An Integrated Impact Assessment is not required with reference to the subject matter of this report.

#### **6 RESOURCE IMPLICATIONS**

6.1 Financial – This report in does not generate any additional financial implications.

6.2 Personnel – This report in does not generate any additional personnel implications.

6.3 Other – This report in does not generate any other known implications.

#### **7 BACKGROUND PAPERS**

7.1 None.

Appendix: East Lothian and Midlothian Public Protection Annual Report 2019-20

<b>AUTHOR'S NAME</b>	Kirsty MacDiarmid
<b>DESIGNATION</b>	Public Protection Team Manager
<b>CONTACT INFO</b>	East Lothian & Midlothian Public Protection Office, Room F28, Brunton Hall, Musselburgh, EH21 6AF  kmacdiarmid@eastlothian.gov.uk
<b>DATE</b>	23/02/21



**East Lothian and Midlothian Public  
Protection Committee  
Annual Report  
1<sup>st</sup> April 2019 to 31<sup>st</sup> March 2020**

<b>Contents</b>	<b>Page</b>
<b>Introduction – Anne Neilson, Chair</b>	<b>3</b>
<b>East Lothian and Midlothian Public Protection Committee Structure</b>	<b>4</b>
<b>Our Governance Arrangements</b>	<b>5</b>
<b>Adult Support and Protection</b>	<b>6</b>
<b>Child Protection</b>	<b>15</b>
<b>Violence Against Women and Girls</b>	<b>22</b>
<b>Offender Management</b>	<b>31</b>
<b>Learning and Development</b>	<b>38</b>
<b>Communications</b>	<b>40</b>

## Foreword

I am pleased to present the East Lothian and Midlothian Public Protection Committee's (EMPPC) sixth annual report which outlines key achievements and areas for improvement for the year ahead. The EMPPC has been well established since 2014 and operates within the context of national guidance and legislation.

The EMPPC continues to address the cross cutting issues incorporating all aspects of Public Protection including Adult Support and Protection, Child Protection, Violence against Women and Girls and the Multiagency Public Protection Arrangements (MAPPA) for service users in East Lothian and Midlothian with one of its key strengths being the wide range of multiagency senior representatives across services and key agencies.

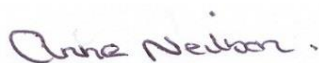
The EMPPC is committed to working in partnership to improve services to support and protect all people who may be at risk of harm within our communities. Over the past year we have implemented improvements identified through inspections, self-evaluation, learning from Initial and Significant Case Reviews and service user feedback.

I would like to thank colleagues across agencies who have responded to the challenges presented in the early part of the year as a result of the Covid 19 pandemic and who are continuing to rise to the challenges currently. This annual report covers the year 1<sup>st</sup> April 2019 to 31 March 2020 therefore the impact and the excellent work undertaken as a result of the pandemic will not be addressed this reporting period.

I am confident that over the next year partner agencies will continue to work together to strengthen our Public Protection arrangements and address the new challenges and opportunities presenting as a result of the pandemic to support those individuals who are most at risk within our communities and continue to improve services across East Lothian and Midlothian.

Anne Neilson

Chair EMPPC



Anne Neilson

Director of Public Protection, NHS Lothian

Chair, East Lothian and Midlothian Public Protection Committee

## East Lothian and Midlothian Public Protection Committee - Structure

East Lothian and Midlothian Public Protection Committee (EMPPC/the Committee) has now been in existence for seven years. We are a well-established strategic partnership, bringing together responsibility for our inter-agency approach to Adult Support and Protection, Child Protection, Violence Against Women and Girls and Offender Management. These are the most high profile critical services for which the key agencies of East Lothian and Midlothian Councils, NHS Lothian and Police Scotland have statutory responsibilities. Our Committee includes key senior officers from the statutory and third sectors. We work in partnership across East Lothian and Midlothian to deliver leadership, expertise and support that will improve the safety of people at risk of harm in East Lothian and Midlothian. We promote a lifespan approach to public protection, recognising the inter-connected elements of our work.

“It’s everyone’s responsibility to support and protect people at risk of harm”

EMPPC Vision for Public Protection

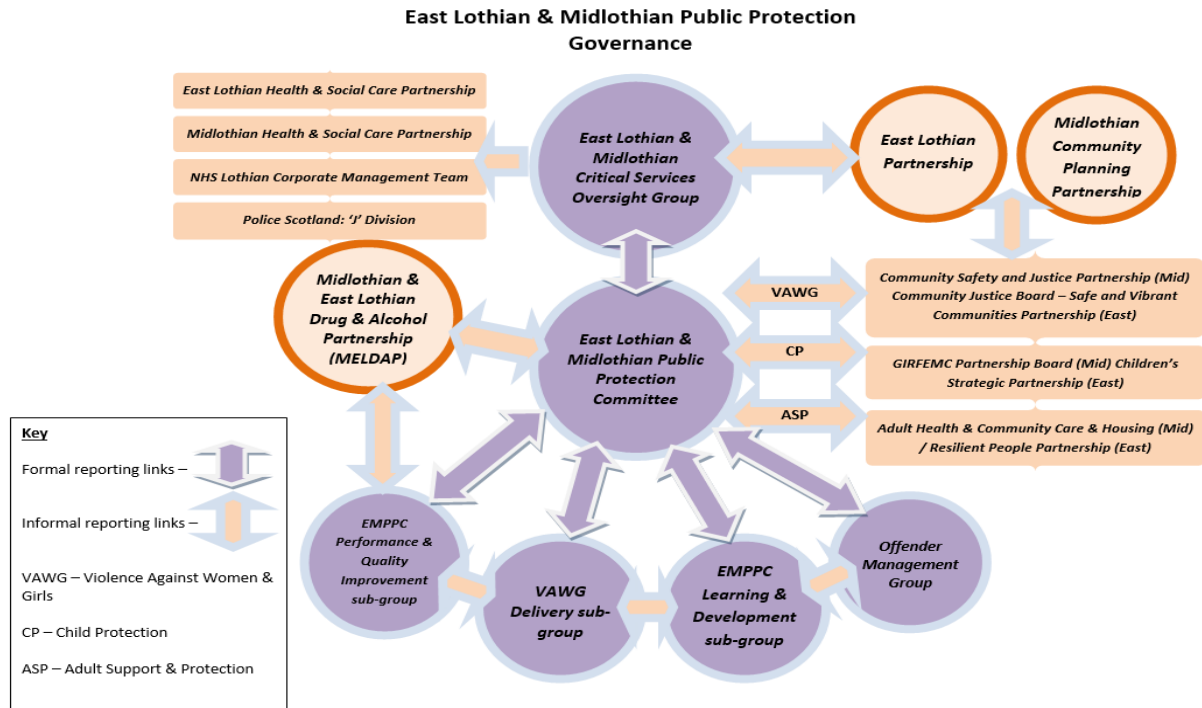
The core functions of EMPPC are supported by the following sub-groups:

- **Performance and Quality Improvement** sub-group, which is responsible for the oversight and governance of the performance framework and improvement plan;
- **Learning and Practice Development** sub-group, which oversees the development and delivery of the Learning and Development strategy;
- **Violence Against Women** Delivery sub-group, which supports the delivery of services and preventative activities to address Violence Against Women and Girls;
- **Offender Management** Group, which ensures that the statutory responsibilities placed on local partner agencies for the assessment and management of risk posed by dangerous offenders are discharged effectively.
- We also have a responsibility to work with our partners to deliver communications from the Public Protection Committee.

The Committee and its sub-groups are supported by the East Lothian and Midlothian Public Protection Office (EMPPO). The office is situated in the Brunton Hall, Musselburgh, with a Public Protection Team comprising of a Team Manager, Business Support Staff, Lead Officer for Child Protection, Lead Officer for Adult Support and Protection, Violence Against Women Co-ordinator, MARAC Co-ordinator and Domestic Abuse Support Workers. The Domestic Abuse Service is the operational component of the team, providing support and guidance to high-risk victims of gender-based violence.

## Our Governance Arrangements

The governance arrangements for EMPPC, its associated sub-groups and reporting links are depicted in the diagram below.





## Adult Support and Protection

### Introduction

Building on last year's successful events to raise awareness of Financial Harm, EMPPC delivered a number of smaller events in collaboration with Police Scotland, Trading Standards, and Scottish Fire and Rescue Service, targeted specifically at more vulnerable individuals within local communities. These events involved raising awareness of scams, cold callers, rogue traders and home fire safety as well as providing information on how and where to report concerns about someone who may be at risk of harm.

In recognition of the National Adult Support and Protection Day on 20<sup>th</sup> February 2020, EMPPC hosted an event on self-neglect and hoarding. This event was jointly funded by East Lothian and Midlothian Councils and the Scottish Fire and Rescue Service. We welcomed the expertise of Professor Michael Preston-Shoot, a Professor (Emeritus) Social Work at the University of Bedfordshire, England. His key message was that self-neglect and hoarding are not a "lifestyle choice", and require a multi-agency response". Self-neglect and hoarding are complex areas of practice for staff as they have the challenges of balancing the adult's right to self-determine and make choices with the responsibility to support and protect. 100 staff attended from a wide range of services across East Lothian and Midlothian and the event was evaluated highly.



Anne Neilson (Chair of East Lothian and Midlothian Public Protection Committee) and Denice Lilley (Lead Office for Adult Support and Protection) with Professor Michael Preston-Shoot at our Self-Neglect and Hoarding Learning Event on 04/02/20

EMPPC also launched their [EMPPC Self-neglect and Hoarding Protocol](#), which is publicly available on our website.

## Adult Support and Protection Data

### East Lothian:

Measure	2015/16	2016/17	2017/18	2018/19	2019/20
Referrals	493	530	791	778	562
Investigations	69	148	112	86	57
Initial ASP Case Conference	15	21	12	28	18
Protection orders	<10	<10	<10	<10	<10
Number of Large Scale Investigations	<10	<10	<10	<10	<10
Principal Type of Harm Investigated	-	-	-	Physical Harm 32/86 (37%)	Financial Harm 17/57 (30%)

The number of Adult Support and Protection referrals submitted to East Lothian has reduced by 28% in comparison to the previous year. This reduction is linked to an inaccuracy in the recording of Adult Support and Protection referrals in 2017/18 and 2018/19, resulting in what we consider to be an over-inflation of referrals data in those two years. We are satisfied that these anomalies have been rectified and the data reported at fiscal year-end is an accurate reflection of the number of Adult Support and Protection referrals received in the year.

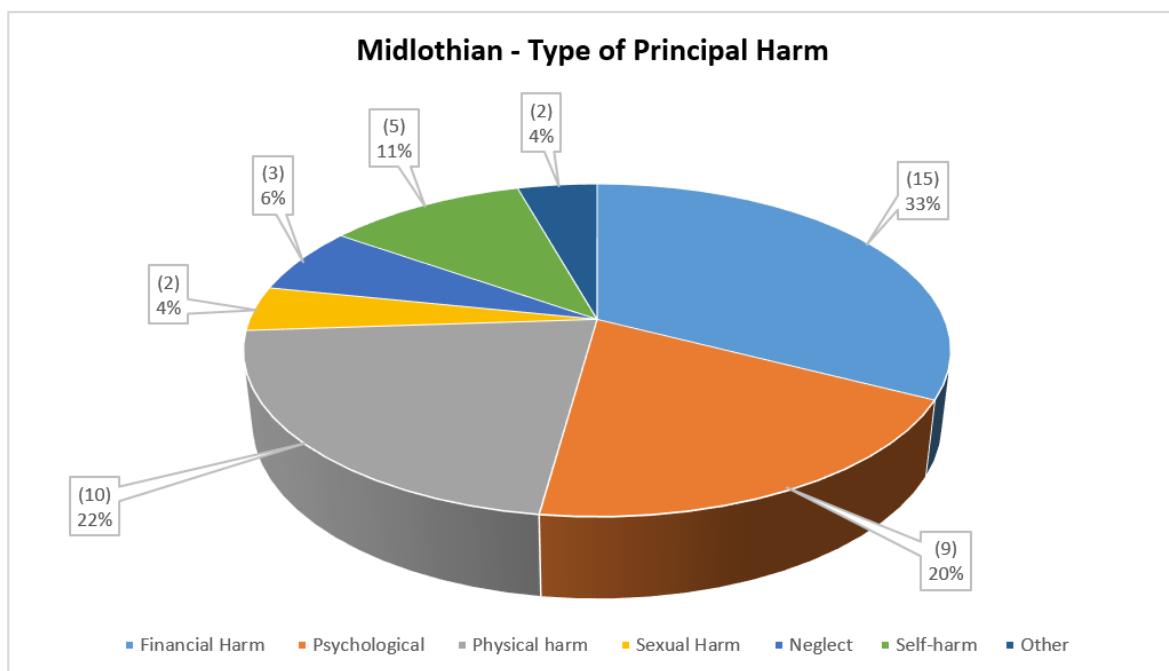
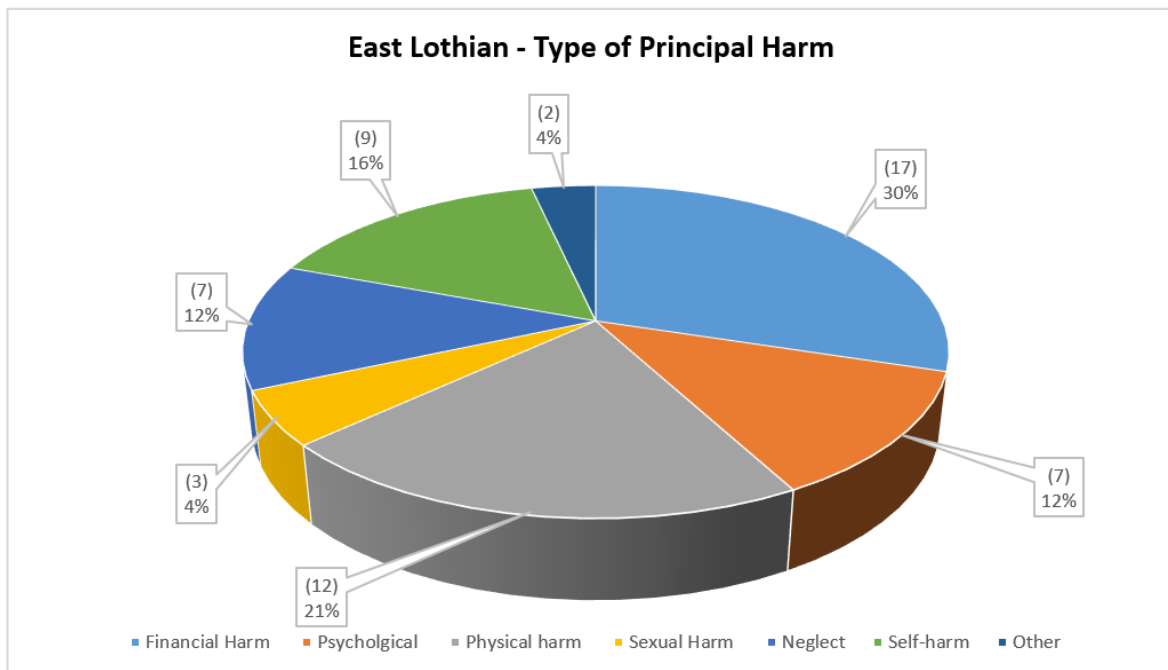
### Midlothian:

Measure	2015/16	2016/17	2017/18	2018/19	2019/20
Referrals	501	681	690	536	468
Investigations	129	82	87	55	46
Initial ASP Case Conference	24	36	35	27	12
Protection orders	<10	<10	<10	<10	<10
Number of Large Scale Investigations	<10	<10	<10	<10	<10
Principal Type of Harm Investigated	-	-	-	Financial Harm <20/55	Financial Harm 15/46 (33%)

The data for 2019/20 report that the number of Adult Support and Protection referrals to Midlothian appears to have decreased by 9%, however this appears to be an under-reporting due to a technical glitch that omitted to count some Adult Support and Protection referrals. This issue has since been resolved.

Midlothian Council implemented an Adult Support and Protection Team from 1<sup>st</sup> April 2019. The team consists of a Team Leader and three Council Officers and a Community Care Worker. The majority of Adult Support and Protection work is progressed by this team.

### Type of Principal Harm Investigated



## Financial Harm

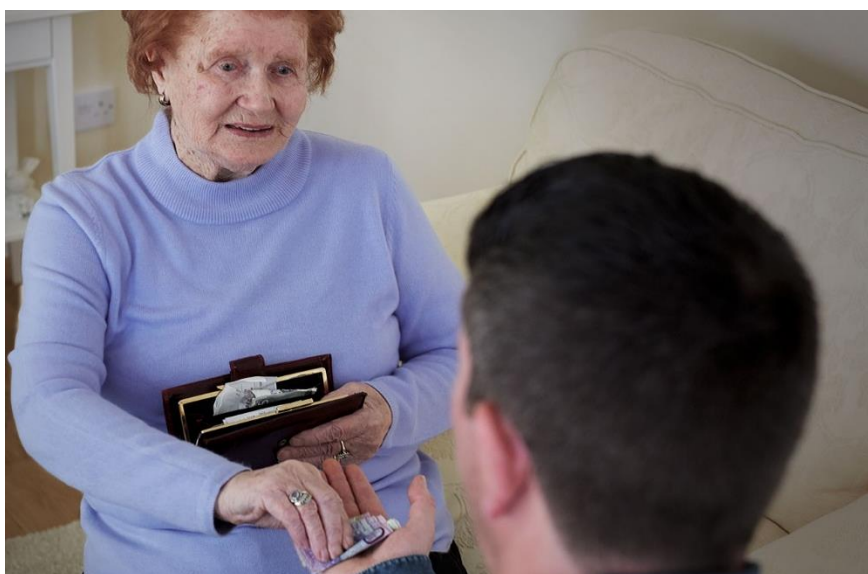
The main type of harm investigated by both East Lothian and Midlothian Councils is financial harm; this is reflective of National Data reporting.

Financial harm is defined as *“The risk of experiencing or the actual experiencing of financial or material abuse, including theft, fraud, exploitation, pressure in connection with wills, property or inheritance or financial transactions, or the misuse or misappropriation of property possessions or benefits”* (National Harm Prevention Group – Scotland 2015)

The majority of the investigations into financial harm was in relation to theft of money within the family.

Section 10 of The Adult Support and Protection (Scotland) Act 2007 makes provision for a Council Officer (specially trained Social Worker in Adult Support and Protection) to examine records; this includes financial records. If it is suspected that an adult may be at risk of harm a Council Officer can request the adult’s financial records from the relevant financial institution. Where there is evidence of criminality the Council Officer is duty bound to share this information with Police Scotland for further inquiry. A Council Officer can take a number of actions to secure the adult’s funds and reduce further risk of financial harm. Any person failing to comply with such a request without reasonable excuse may be considered to be causing an obstruction and can be liable to a summary conviction.

East Lothian and Midlothian Public Protection Committee endeavour to reduce the risk of financial harm by supporting national campaigns to raise awareness of these risks through the use of social media and council websites and working closely across the Partnerships with Trading Standards colleagues, Police Scotland, Citizens Advice Bureau and the local branches of the financial sector.



The image above is from The Scottish Government National Campaign #seensomething #saysomething with the caption Borrowing? or Stealing? If you would like more information

about an Adult at Risk of Harm or wish to report a concern, you can click on this link:

<http://www.actagainstharm.org/>

### **Learning from Initial Case Reviews/Significant Case Reviews**

The purpose of an Initial Case Review is to develop and improve practice as well as service delivery through the learning and review processes when a critical incident has occurred. Where improvements and learning outcomes are identified these are shared with multi-agency staff across the Partnerships. EMPPC are committed to the learning and development of all staff across the Partnerships working with adults at risk of harm. EMPPC continue to work with the Scottish Fire and Rescue Service to raise awareness of Fire risk indicators associated with self-neglect and hoarding amongst inter and intra-agency staff, as well as the necessity of referring for a Fire Home Safety Visit to reduce the risk of fire fatalities.

EMPPC take learning from published reviews in other areas. In the year, South Ayrshire Adult Protection Committee published the [Independent Significant Case Review Report on Sharon Greenop](#). Miss Greenop was a 46-year old woman with a physical disability arising from a spinal injury, who was in receipt of a care at home service for a period of 7 years. Her sister was found guilty of her murder. The SCR review identified that the closure of the care package and the response by the Duty Team to reports of concern were critical and contributory factors that lead to her death.

EMPPC have shared the findings and recommendations of the report with relevant staff, specifically those responsible for the management and oversight of care packages. This led to a comprehensive review of systems and process when responding to requests for closure of care packages. Additionally, all social work staff responding to “duty” calls, and in particular where there is an Adult Support and Protection concern have all undertaken essential training In Adult Support and Protection. This training covers the legislative functions, roles and responsibilities of the local authority, the identification of harm and the roles and responsibilities of the agencies charged with discharging its functions.

In addition to the above, the recommendations and learning from this SCR were disseminated to multi-agency staff through a 7-Minute Briefing. A 7-Minute Briefing provides a framework to deliver succinct key information, facilitate reflective practice and team discussion on the key issues identified. This model is an evidence-based technique borrowed from the FBI as research shows that learning for 7 minutes is manageable in most services and learning is more memorable as it simple and not clouded by other issues and pressures.

### **Performance Framework and Improvement Plan**

EMPPC are committed to the improvement of service delivery and outcomes for adults at risk of harm. The service delivery and the quality of the multi-agency response to adults at risk of harm are reviewed and evaluated each quarter through a set of Performance indicators that evaluate agency responses to: Multi- agency communication, assessment

and management of risk, support and protection planning, service user participation and timely responses for adults at risk of harm.

### **Self-evaluation**

Following on from the Adult Support and Protection Thematic Inspection 2017-18, EMPPC have worked in partnership with the strategic link inspector for Midlothian to review and amend the Care Inspectorate's evaluation template for our own use. We undertook a self-evaluation exercise by reading 15 cases from across social work in East Lothian and Police Scotland. This represented 20% of the overall number of ASP cases that had progressed to Initial/Review Case Conference between 2017 and 2019.

The self-evaluation activity revealed a mixed picture of strengths and areas of improvement with evaluations ranging from Very Good to Adequate. Auditors noted that there is an improving picture evolving across all Adult Support and Protection activity within East Lothian. We found clear evidence of the improvement of the safety and wellbeing of most of the adults at risk of harm. However, this appeared to be most challenging where there are complex issues such as problematic alcohol and substance misuse.

“Vulnerability or a lack of ability to safeguard, which is due to temporary problematic alcohol or drug use, would not by itself result in an individual being considered an “adult at risk”. Adults have the right to make choices and decisions about their lives, including the use of alcohol and drugs”.<sup>1</sup>

East Lothian Health and Social Care Partnership are in the process of developing a multi-agency Risk Management Protocol in response to the management of escalating concerns where the adult is presenting with significant risk but does not meet the criteria of an adult at risk of harm.

### **Challenges and Priorities**

EMPPC reported last year that seeking feedback from service users and carers about their experience of the quality of the services provided through the adult support and protection process has proved challenging and considered this to be an area of priority. EMPPC are pleased to report their progress in this area and are now actively engaging adults and their carers in this process via the completion of a questionnaire on their experiences of the service delivery and adult support and protection processes via phone.

*“I found that everybody was very pleasant and polite and it was like they sat in my shoes and it did feel that they were looking at it from my point of view. They dealt with a very delicate situation very well”*

Feedback from adult

---

<sup>1</sup> Adult Support and Protection (Scotland) Act 2007 Code of Practice 2014

Although we have made progress in this area, EMPPC acknowledge that we are in the very early stages, therefore service user and carer self-evaluation remains a priority for us.

Prior to COVID19 EMPPC delivered two development sessions for all staff across the Partnership, including third sector staff, to address the crossovers between Adult Support and Protection and Violence Against Woman and Girls, with a total of 56 staff attending. These sessions focused on:

- Domestic abuse and inter-familial harm in older people aged 60+. This development session was delivered by the Dewis Project (a Big Lottery funded community led project based within the centre of Age, Gender and Social Justice at Aberystwyth University).

This session challenged perceptions of how we see and respond to older peoples' experience of domestic abuse. Aberystwyth University revealed that often older people are diverted from receiving a domestic abuse response and therefore reducing their access to justice. Older people tend to experience a "Welfarisation" approach, by being linked into care and offered an increase in their support as this can often be considered as carers stress. Domestic abuse policies and service responses/provisions are generally aimed at white heterosexual female victim survivors with young children. Learning Disability and Gender Based Violence. This session was supported by the NHS Scotland Gender-based Violence Team.

This session was informed by new Practitioner Guidance on Learning Disability and Gender Based Violence and to raise awareness of the intersections between Gender Based Violence and adults' aged 16+.

In response to these sessions, our MARAC processes have been reviewed to capture the diversity of the victims referred as High Risk cases of domestic abuse. In addition, domestic abuse has been added as a type of Principal Harm within the Adult Support and Protection referral, Duty to inquire, Investigation and Case Conference processes to enable a more holistic response to Adults at risk of Harm of domestic abuse and inform EMPPC strategic response going forward. This remains a priority area.

### **Adult Support and Protection Learning**

277 people attended ASP training in the year. Broken down to subject matter, this included:

<b>Date</b>	<b>Title</b>	<b>No of Attendees</b>
25/04/2019	Care Home Managers Training	11
01/05/2019	Care at Home Managers Training	26
26/06/2019	Level2 (Multi-agency) Adult Support and Protection Training	30

27/06/2019	Level 3 Council officer Refresher Training	8
08/10/2019	Level2 (Multi- agency) Adult Support and Protection training	24
09/10/2020	Level 3 Council Officer training	7
10/12/2019	Level 3 Council Officer/Refresher training/	10
15/01/2020	Dewis Choice - Domestic Abuse and Inter familial abuse of older people	20
22 & 23/ 01/2020	Investigative Interviewing – Skills based training	6
04/02/2020	Self-Neglect and Hoarding- Learning Event	100
20/02/2020	Gender Based Violence and Learning Disability	35

EMPPC have reviewed the Level 3 Council Officer training, following which we condensed the Level 3 Council Officer training into a one day session which also serves as Council Officer Refresher training (which is required to be completed every two years). Combining these two training events enables a shared learning experience to newly qualified Council Officers. All Adult Support and Protection training sessions have evaluated highly and have received positive feedback:

*“The detailed breakdown of the definitions used in the description of the three point test were really useful and informative. I now feel more confident in making this decision and I feel my written rationale will be clearer and concise”.*

### **Looking Forward**

Following the success of the self-evaluation activity in East Lothian a further review of the Care Inspectorate’s self–evaluation template was undertaken to incorporate the evaluation of health records in partnership with health colleagues when responding to adults at risk of harm.

EMPPC are committed to developing a continuous framework for multi-agency self–evaluation and hoped to extend this activity to Midlothian this year. The impact of COVID19 has meant that this area of work is temporarily suspended and careful consideration is required as to how to progress this work.



All Adult Support and Protection training planned for the year 2020 -21 has been postponed for the time being due to the current climate. EMPPC are working towards transferring critical training for staff onto an online platform to ensure continued learning and development in the practice of Adult Support and Protection.

## Child Protection

### Introduction

This section sets out the context in which Child Protection work is carried out in East Lothian and Midlothian, outlining the EMPPC priorities for improvement, how we assess our continuous improvement journey and the activities and processes we have in place to ensure progress is made.

Crucial to success is the collaborative approach to protect children and young people and keep them safe from harm. We recognise that Child Protection is part of a wider continuum of support and protection to children, young people and families and used only when other supports cannot ensure safety.

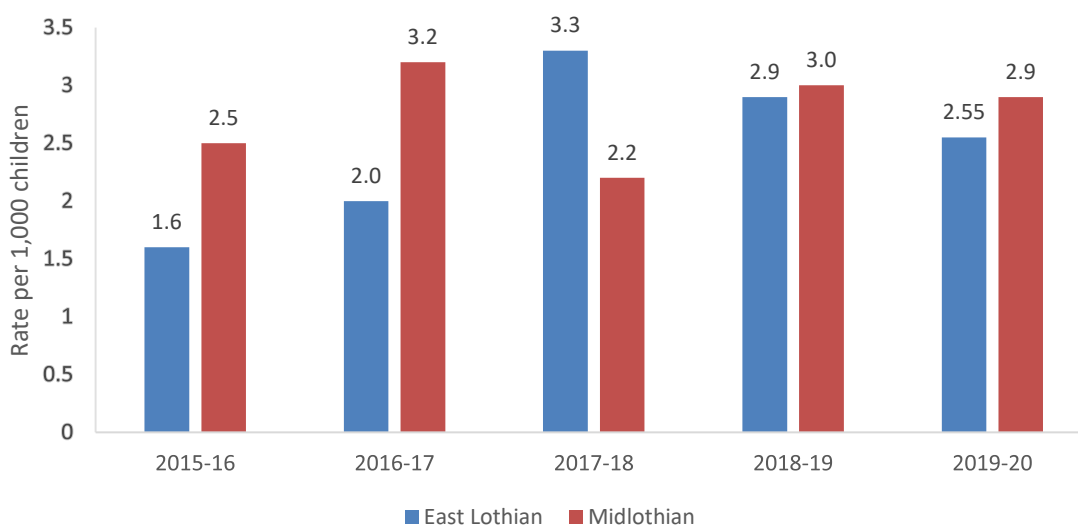
### Child Protection Data

This year EMPPC agreed we would move to monitoring and reviewing our Child Protection data using the National Minimum Dataset for Child Protection Committees for Scotland. We have re-engaged well with CELCIS and have undertaken the foundation work to review and refine our local indicators to add to the national data set package. This will come on stream in August 2020.

### Child Protection Registrations

During the 12-month period to 31st March 2020 the number of children on the CPR increased in East Lothian from 42 to 49, an increase of 17%. In the same period, in Midlothian the number increased from 51 to 53 showing an increase of 3%.

**Rate of Children on the Child Protection Register, per 1000 child population**

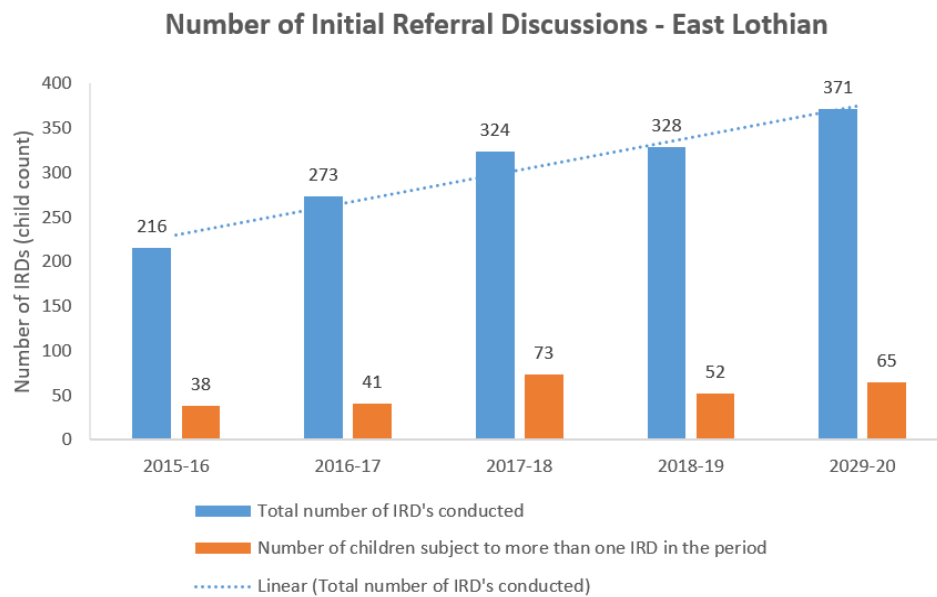


Although numbers have fluctuated slightly over the years, as a percentage of the child population the data remains fairly static. This evidences consistency across the partnership in intervention and consistent use of the tools to support assessment and improve outcomes for children.

## Interagency Referral Discussions

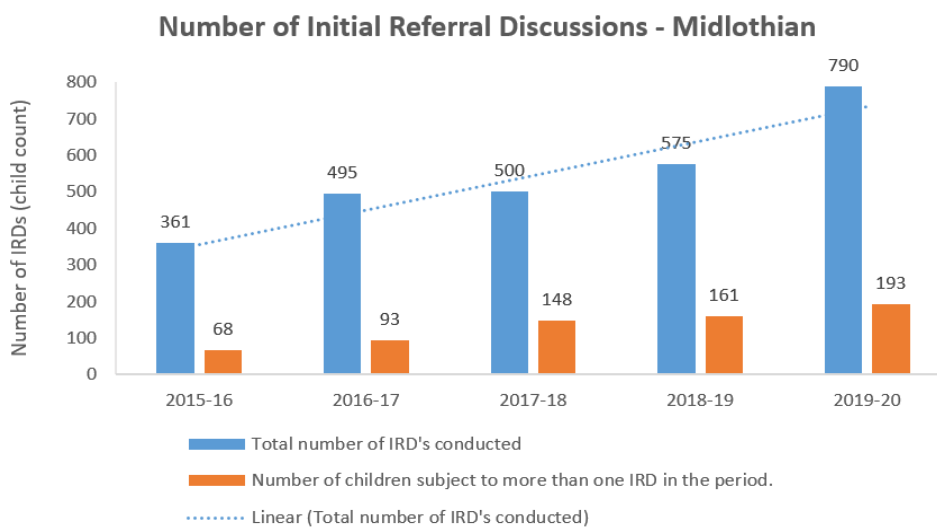
### East Lothian

During the 12-month period to 31<sup>st</sup> March 2020 in East Lothian 371 children were subject to Interagency Referral Discussions (IRDs), an increase of 13.1% over the previous year. 17.5% were for children who already been subject to an IRD within a 12 month period.



### Midlothian

There were 790 Inter Agency Referral Discussions in Midlothian during the reporting period. This represents an increase of 37.4% from the previous year. 24.4% were undertaken for children who already been subject to an IRD within a 12 month period.



In order to look in more detail at the increase in Midlothian, an audit of repeat IRD's was undertaken in February 2020. The audit sought to explore whether there were any common factors that would allow us to identify the factors that may be driving this increase.

The audit determined that all the referrals were appropriate and that staff across all agencies were clearly identifying risk. The referral to IRD was of sufficient concern that it met threshold. In the vast majority of cases, the investigation and planning were assessed to be appropriate.

### **Key Areas for Improvement Overall**

In the majority of IRD's we identified that there had been repeat interventions by many agencies over a period of time. Despite resources having been deployed to assess concern and risk, these had not resulted in sustained future proof improvement. The subsequent referral for these children was an escalation of previously known and recognised risks that occurred before and subsequent to the index IRD. An overall theme emerged around the need to strengthen work in the identification of neglect and delivery of services to children who are being neglected.

The Performance and Quality Improvement sub-group has considered this report and areas for improvement are being addressed either through the Child Protection Improvement Plan or by single agencies. Our Performance and Quality Improvement sub-group monitors the progress of these improvement activities.

A short-life working group has been set up to strengthen our response to child neglect. This will support an understanding of the scale and impact of neglect of children in East Lothian and Midlothian, to formulate a clear and consistent approach to the identification and assessment of neglect, and reducing the associated impact.

### **Developments this year**

This year the EMPPC committed to using the National Minimum Dataset for Child Protection Committees in Scotland to monitor our work. We undertook work to agree which local indicators we will retain to complement the National Minimum Dataset. We have established the mechanisms to facilitate data capture and have developed the workbooks for presentation of our local indicators in preparation for our first return later this year. This will allow for robust monitoring of datasets to support Child Protection improvement locally and expand our local and national analytical capacity.

The East Lothian and Midlothian Public Protection Office led on an exercise to improve our multi-agency response to Looked After and Accommodated Children who go, or are at risk of going missing. EMPPC agreed a local inter-agency partnership protocol in March 2019 which followed on from the national pilot. This has involved developing a senior oversight and an operational implementation group. As part of this, Police Scotland's 'J' Division

Missing Persons' Co-ordinator has prepared weekly intelligence reports which are shared with Social Work and partners to allow for early identification and intervention in relation to the children and young people who most frequently go missing. This was supported by a series of training and local briefings on both the Missing Person Local Partnership Protocol and the Return Discussions. These sessions were well attended by staff from both Local Authorities, Education and Third Sector providers.

This year there has been a refocus on the impact of poverty and its significance in Child Protection in response to the publication of 'Child Welfare Inequalities: A Four Nations Study' (Bywater et al 2018). It found that there is an inverse correlation between poverty and child abuse and neglect; that is to say as socioeconomic status decreases, the risk of Child Abuse and Neglect increases. They found a strong association between a family's socio-economic circumstances and the likelihood that their children will experience Child Abuse and Neglect. With each 10% increase in neighbourhood deprivation there was a noted 30% increase in Looked After and Child Protection status.

In response to these findings the Child Protection Lead Officer worked with our local authority partners to consider the above. In East Lothian, a process was developed to ensure that all families with a child on the Child Protection Register were supported to attend Income Maximisation appointments with Welfare Rights. This was subsequently extended to children looked after at home. In Midlothian funding has now been agreed for the appointment of a Welfare Rights worker to take this approach forward over the coming year.

We have continued our commitment to support the training and development of staff in Signs of Safety in East Lothian, and in Midlothian we continue to invest in the Outcomes Focussed Approach. Both of these approaches are interwoven with the Safe and Together suite of tools and interventions, which are designed to support professionals to be domestic violence informed. All of this work is underpinned by EMPPC's commitment to relationship-based and systemic practices.

### **Learning from Initial and Significant Reviews**

Initial and Significant Case Reviews are a critical part of continuous improvement, and the EMPPC is responsible for the undertaking of reviews, the development of action plans based on the findings of reviews, and overseeing implementation of the action plans.

During 2019/20 we completed less than five ICR's and commissioned an independent Chair for an SCR. We use the learning from ICRs/SCRs to improve and promote good practice and contribute to improved outcomes for children and young people across Scotland.

During 2019/20 we issued two 7 minute briefings and supported multi-disciplinary teams within the Partnership to use them as a tool to learning and practice improvement and development. The dissemination of learning was overseen by the Learning and

Development sub-group and the improvements in practice were overseen by the Practice and Quality Improvement sub-group.

### **Multi-agency Self-evaluation**

Whilst individual agencies have responsibility for the quality assurance of their own service, EMPPC has responsibility for the development and implementation of inter-agency quality assurance mechanisms.

An audit was commissioned to consider whether learning from an ICR and SCR had embedded in practice following their inclusion in the previous years' improvement plan. This was initiated in September 2019 across both authorities and looked at actions after children's names were removed from the Child Protection Register. The audit examined chronology, record keeping and evidence of continued multi-agency meetings post registration. Evidence was triangulated and findings presented to the Committee.

Several areas of positive practice were evidenced; for example, most cases demonstrated the use of multi-agency chronology although further development on ensuring they are maintained and up to date was required. This was taken forward within the business year with additional scrutiny tools added to Mosaic<sup>2</sup>.

In many cases there was evidence that core group meetings were working well, enabling information to be shared on a regular basis to support the protection of children. There was evidence that this needed to be recorded in a standardised mechanism on Mosaic and further work was completed in this area to ensure this process is consistently adhered to.

This year a scrutiny tool was developed to support the IRD overview group in its' quality assurance function. The IRD overview group continue to meet fortnightly. It is attended by a service manager from Children's Services, a Consultant Paediatrician from NHS Lothian and a senior officer from Police Scotland. The Lead Officer for Child Protection chairs the group.

The purpose of the overview group is to provide quality assurance and data collection in relation to decisions made as part of an IRD. A clear agenda is followed at each overview group and data collection is summarised and reported on each quarter to the EMPPC via the Quarterly Report.

The quality assurance aspect looks at:

- The relevance of the IRD (in line with **EMPPC Child Protection IRD Threshold and Outcomes Guidance**);
- If the interim safety plan meets the standards required in the **EMPPC Child Protection Interim Safety Plan Guidance**;

---

<sup>2</sup> The social work recording systems used in East Lothian and Midlothian

- If additional actions are required to further reduce existing risk; and
- Barriers to completion for IRDs that have been open for over 14 days

The purpose of this tool is to identify, quantify and summarise exception reporting, identifying and highlighting IRD's that showed exceptional and or innovative practice as well as identifying IRD's that did not meet these standards. Reporting will be on a biannual basis to the Practice and Quality Improvement sub-group and then to the Public Protection Committee.

### **Child Protection Learning and Development**

The EMPPPO co-ordinates the delivery of training on behalf of East Lothian and Midlothian Public Protection Committee via the Learning and Practice Development Sub-Group, the Learning and Development Strategy and Training Pathway.

We continue to develop links across the public protection landscape to jointly plan and commission training on an interagency basis.

In Child Protection we offered a range of training opportunities and 334 delegates attended. We continue to improve our processes for systematically monitoring, reviewing and evaluating the quality of and impact of our training programme. Exit evaluation questionnaires are completed on the day of training and these are reviewed to ensure that training continues to meet need.

### **Practice Themes and Emerging Trends**

Covid19 has had a significant influence on Scotland's Public Services and it will be sometime before we fully understand the direct and indirect impact on these services and the people and communities we serve. A key focus of the work in the Public Protection Office has been to respond quickly to provide guidance to the partnership to enable them to continue to provide key processes in a time of unprecedented challenge.

The EMPPPO co-ordinates the delivery of training on behalf of EMPPC via the Learning and Practice Development Sub-Group, the Learning and Development Strategy and Training Pathway. As a consequence of the pandemic face to face training was suspended. Our training requires re-design to enable it to be delivered by virtual means.

We will continue to work with our partners to strengthen our response to neglect and accumulative concerns and ensure that a focus is maintained on income maximisation as part of this overall work. The impact of COVID on our families and communities may result in an increase in referrals for Child Protection services and we will continue to monitor trends and patterns.

Strong partnership working, shared policy, procedures and practice are essential elements of keeping our children and young people safe. We need to strengthen our approach to

seeking feedback from children and young people about their experience of the child protection systems and use this to inform our improvement journey.



## Violence Against Women and Girls

EMPPC's Violence Against Women Delivery sub-group, with more than twenty committed members from public and third sector services, meets quarterly and is responsible for action to deliver Scotland's Equally Safe Strategy at a local level.

### 16 Days of Activism to end Violence Against Women and Girls 25 November – 10

**December** has been a key feature of our approach to fostering culture change and prevention in recent years. Our 2019 calendar was full of interesting initiatives from across our services. Our flagship Partnership *'Coming Together - Building Well-thy Communities'*



event brought together around 70 participants including eight service users. The event featured contributions from survivors such as a testimony from one service user of the barriers she experienced her suggestions for improvement and another group presenting African drumming. A suite of presentations from service leads led to a lively and challenging discussion with women survivors on their experience of using services. As a direct result of this input a joint meeting with health and police partners took place to consider local service improvements; one service user shared her experience and the importance of accessing specialist domestic abuse; three other service users shared poetry pieces developed at the creative writing sessions; and one other sang some popular songs and shared one of her own songs about her experience.



The international White Ribbon Campaign aims to bring men on board as allies. Midlothian Council held a White Ribbon training day with ten employees (within the 16 Days

*"Every man needs to change their attitude (... to violence against women), and if they can do something about it then they should"*

Midlothian Council male participant

programme and their Equally Safe At Work bronze accreditation). [View them taking the White Ribbon Pledge and talking about the experience on YouTube](#) .

We had many partnership Roadshows in public spaces and White Ribbon Pledge sign-ups particularly with businesses with male workforces such as Torness and the Musselburgh Blue Watch team (below).



### Safe and Together

In January 2018, we started work on adopting [The Safe & Together™ Model](#), which is “an internationally recognised suite of tools and interventions designed to help child welfare professionals become domestic-violence informed”. We are part of the network of 16 Scottish local authorities working to embed this approach into our delivery of children’s wellbeing and protection. In our second year, EMPPC has continued to provide Core Practice training prioritising social work and relevant third sector staff, funded through the Communities Fund, which 83 completed. Our two Domestic Abuse and Safe & Together briefings to 55 participants sought also to raise awareness of the new Domestic Abuse (Scotland) Act. Subsequently the programme of briefings was transferred to each local area to deliver. The Children’s Social Work Service Manager leads have formed a local delivery group to embed the approach in their systems and practice. Midlothian developed a domestic abuse case file audit tool and the first audit advised that they are beginning to see evidence of the positive impact of the Safe & Together approach being embedded into practice. There was overwhelming evidence that workers are good at identifying domestic abuse concerns and that these are considered within assessments. There was also evidence that we are beginning to see impact of Safe & Together language and practice. It is important to be able to provide support to perpetrators of domestic abuse if they are open to change as part of the Safe & Together approach. This year Midlothian piloted a

Families First voluntary programme for fathers who wish to change their behaviour, based on the principles of the Caledonian System. Whilst uptake was low in the first year, which reflects national attempts to engage with perpetrators of domestic abuse on a voluntary basis, the service has plans to enhance referral routes through a range of other services and to provide an early intervention Developing Dads parenting group which will include domestic abuse.

### Violence Against Women and Girls data

Public Protection's VAWG Measures		16/ 17	17/ 18	18/ 19	19/20
VAW01 – Number of incidents of Domestic Abuse recorded by the Police	East	938	938	1,153	1,264
	Mid	1,040	987	1,179	1,194
VAW02 – Number of victims referred to the Domestic Abuse Referral Pathway following a Police incident	East	106	190	302	302
	Mid	113	237	282	244
VAW03 – Number of victims referred to MARAC	East	85	78	103	105
	Mid	111	75	105	82
VAW04 – Number of children involved in cases referred to MARAC	East	120	110	137	150
	Mid	153	124	169	151
VAW05 - % of repeat MARAC cases (within one year)	East	35% (30/85)	27% (21/78)	48% (49/ 103)	32% (34/105)
	Mid	41% (46/ 111)	33% (25/75)	33% (35/103)	17% (14/82)
VAW06 – Number of sexual crimes recorded by the Police	East	160	134	203	196
	Mid	157	179	202	205
VAW07 – Number of survivors of rape and sexual abuse referred to specialist support services provided in East Lothian and Midlothian by Edinburgh Rape Crisis Centre	East	25 (52 women supported)	31 (51 women supported)	35 (54 women supported)	37 (63 women supported)
	Mid	31 (37 women supported)	26 (43 women supported)	47 (63 women supported)	46 (71 women supported)
VAW08 – Average length of time survivors of sexual violence need to wait from the point of initial assessment to the first long-term support session, provided by Edinburgh Rape Crisis Centre	East	New Indicator		19 ½ weeks	21.75 weeks
	Mid			14 ½ weeks	14.75 weeks
VAW09 – Number of referrals to specialist perpetrator interventions (men only)	East	New Indicator			80
	Mid				51
VAW10 – Number of perpetrators of domestic abuse engaged in specialist perpetrator interventions	East	New Indicator		20	117
	Mid			24	107

The national Equally Safe Quality Standards and Performance Framework, now in its 3rd year, aims to be a resource to support VAW partnerships to measure and demonstrate the progress being made to implement Equally Safe, Scotland's strategy to prevent and eradicate violence against women and girls, at local level and identify areas for improvement.

Due to pressures arising from the context of the pandemic, this year we completed only the performance framework. The framework's four sections include: funding; referrals to specialist violence against women and girls services; referrals to services for perpetrators and outcome in safety and wellbeing.

We reported 1,369 referrals to existing specialist VAWG support services for women and girls as shown in the table below.

<b>Number of referrals (women and girls) to specialist VAWG support services</b>		
<b>Referrals by age range</b>	<b>Number</b>	<b>%</b>
Girls aged 0-15	250	18%
Women aged 16-25	94	7%
Women aged 26+	918	67%
Women age not identified	107	8%
<b>Total referrals</b>	<b>1,369</b>	<b>100%</b>

In terms of outcomes for women and girls, at point of exit from service:

- 49% reported or were identified as being at less risk of harm; and
- 65% reported or were identified as having an improved level of wellbeing

Our outcomes data is work in progress as not all of our services are able to collect this data and it is not always possible to complete an objective assessment or exit interview.

### **Domestic abuse**

Women’s Aid East and Midlothian received referrals for 236 children and young people and 718 women of all ages; many of them either self-refer or come from a range of services and do not relate to a police incident, which gives a fuller picture of the extent of known domestic abuse. There were 116 women referred to the Domestic Abuse Service, which is explicitly for the highest risk survivors of domestic abuse.

Men are not included in these figures, however, SACRO’s FearFree Lothian wide service supports men and LGBT survivors of domestic abuse: in 2019/20 they received less than ten referrals for men from East Lothian and Midlothian.

### **Commercial Sexual Exploitation**

Taking forward our partnership’s Position Statement on Commercial Sexual Exploitation we have sought to strengthen partnership working with support services; this year SACRO’s Lothian wide services reported four referrals for women in our two areas and through the new CliCK service they are working to increase outreach and reporting.

### **So-called ‘Honour-based’ violence**

Our social work services did not receive referrals for FGM and Forced Marriage; Shakti Women’s Aid received less than ten referrals from our areas forced marriage and ‘honour-based’ abuse).

## Sexual abuse

Whilst the previously rising number of sexual crimes reported to the police appear to have levelled off in 2019/20, the number of women aged 16+ seeking support from our East Lothian and Midlothian Sexual Abuse Services continues to rise. These services, which are part-time, supported 134 women during 2019/20 compared to 116 in 2018/19.

Consistently, a minimum of 80% of survivors supported report that they:

- Feel safer and more in control of their options and choices;
- Feel more able to cope with the impacts of sexual violation and trauma;
- Develop improved well-being and resilience;
- Are empowered and supported to engage with the criminal justice system, when they elect to do so.

*'I was finally able to confront and deal with the abuse I suffered and my feelings towards my abuser and my relationship with intimacy. The support worked for me, as it was after work, and in a relaxed and safe place. My worker was so helpful. She helped me face my negativity and deal with this. I felt very comfortable talking to her. She helped me get my life and marriage back. I'm eternally grateful.'*

Sexual Abuse Services - survivor

As more women speak out publicly about their experiences of different forms of gender based violence and with the improving national information and response we anticipate that demand for specialist services for all types of abuse will continue to increase.

### Performance Framework and Improvement Plan

EMPPC are committed to the improvement of service delivery and outcomes for people experiencing gender based violence, the majority of whom are women and girls. The ten indicator set of key performance indicators focuses attention on the two main areas of multi-agency working: domestic abuse and rape and sexual assault. The improvement plan actions are designed to strengthen our work in relation to the indicators and the four priorities of the Equally Safe strategy. The indicators and improvement actions are monitored quarterly through the VAWG Delivery subgroup, the Performance and Quality Improvement subgroup and EMPPC.

### Key developments

In 2018 East Lothian Council signed the 'Make A Stand' Campaign Pledge which asked housing providers to make a commitment to support people experiencing domestic abuse. Following this the Council's Community Housing service set up a project group to develop a new Equally Safe Housing Policy, which will consider all aspects of housing and related

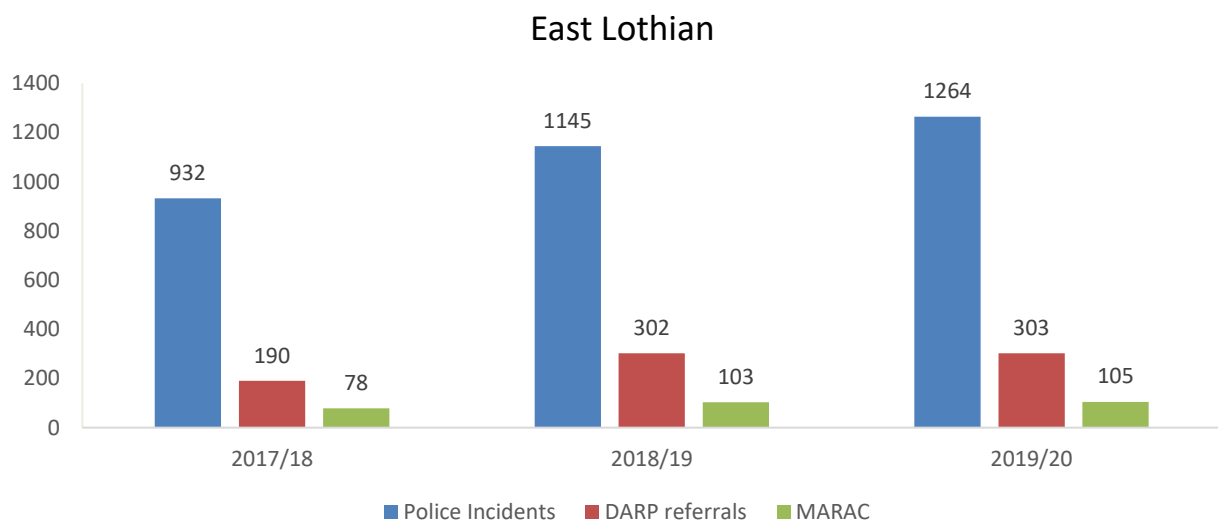
services required to deliver a fit for purpose system which sets out a unified respond to violence against women and girls across all tenures in East Lothian.

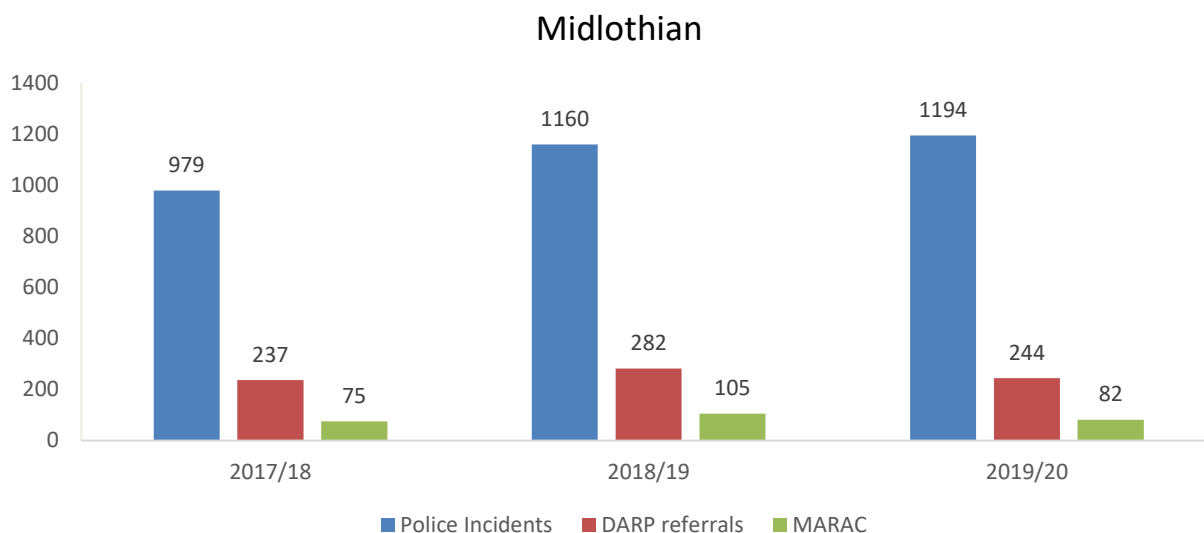
### Domestic Abuse Pathway and MARAC

We consolidated our partnership’s Domestic Abuse Referral Pathway Following a Police Incident (DARP), by reviewing our operating protocol as well as establishing a service agreement with Women’s Aid East and Midlothian to provide specialist workers for the Domestic Abuse Service team from July 2019. In August we welcomed a new Marac Coordinator to the team.

We also consolidated our approach to MARAC (Multi-Agency Risk Assessment Conferencing) for cases of domestic abuse where there is risk of serious harm or murder. We reviewed the Operating Protocol and enhanced quarterly monitoring reports to the VAWG Delivery sub-group, which is also the MARAC steering group. We also delivered a programme of briefings and training for local organisations to upskill staff to understand, assess risk and refer to MARAC.

The tables below summarise the last three years’ data for the key Police, Pathway and MARAC indicators in East Lothian and Midlothian.





In East Lothian, the number of Domestic Abuse Incidents recorded by the Police has been steadily rising and referrals through DARP and to MARAC have remained stable in 2019/20 in comparison with 2018/19. In Midlothian, whilst the number of Domestic Abuse Incidents Recorded by the Police increased from 2018/19 to 2019/20, referrals through DARP and to MARAC have decreased.

Over 2019/20, 547 survivors of domestic abuse consented to specialist support through our Pathway services; 98% of them were female and 2% were male.

The majority of referrals to DARP scored 9 or less on the Domestic Abuse Questionnaire (DAQ) risk assessment, carried out by Police Scotland; this is consistent with anecdotal evidence that there has been an increase in incidents involving people with no previous known history of domestic abuse (first time offending). Rather than an increase in levels of domestic abuse this may reflect changing attitudes to domestic abuse so that survivors may be more likely to call the Police. The lower level of risk may be a contributing factor to the slower increase of MARAC referrals in East Lothian and the decrease in Midlothian.

Quality assurance for MARAC is provided by SafeLives through two yearly observations based on the ten principles of an effective MARAC and analysis of our quarterly MARAC data reports. Their Scottish Development Officer carried out a second observation of East Lothian and a Midlothian MARAC meetings; Safe Lives acknowledge that the observation only offers a snapshot of the operation of each MARAC and that practice may differ at other times.

The Observation Reports highlighted areas of good practice, including strong, well established and effective working relationships, strong operation of the SafeLives model, the level and detail of risk assessment, proactive information sharing, good follow through on actions and good governance structure. The Reports also highlighted the following areas

for improvement: diversification of referrals from wider services, including those supporting people with disabilities and from the LGBT communities and men; attendance of core agencies; greater focus on current risk and time-limited actions; diversity monitoring and addressing capacity.

*“Your support. You checked in on me, you understood, down to earth and you didn't judge. You were a massive help. I didn't shut myself down.”*

*(Domestic Abuse Survivor)*

### **Challenges and Priorities**

The Covid-19 pandemic has made visible the particular vulnerability of women, children and young people to gender based violence as a result of public health measures to contain the virus. This has not only increased the demand on universal and specialist services but has also highlighted the need for truly trauma-informed, person-centred services, which need to be gender competent if they are to cope with the compounded trauma from restrictions and the range of abuse with violence against women as well as other forms of abuse and neglect.

### **Specialist Services**

Our Equally Safe Performance Framework report and early work on the Public Protection Strategic Needs Assessment have highlighted the need to extend the capacity and sustainability of our services and to address gaps in specialist services:

- No referrals for girls and boys aged 12-18 to sexual abuse services as these are not yet provided locally.
- No referrals for adult male survivors of sexual abuse as no local services are provided.
- Due to capacity limitations East Lothian has not been able to provide a voluntary programme of support for men who abuse their partner or ex-partner, which is key to support embedding Safe and Together into children's wellbeing and protection.

### **Prevention, gender equality and human rights**

We need a coordinated approach to prevent gender based violence and intervene very early when harmful behaviours are just beginning. Prevention means primarily having an education based approach aimed at increasing gender equality and respect for everyone's human rights, whilst bringing men and boys on board as allies to challenge sexist attitudes and behaviours among peers and model respectful non-abusive behaviour.

In addition we need to provide local support in both local authority areas to help those who are concerned about their own behaviour and wish to make changes. This will build on



international good practice through the White Ribbon and Safe & Together Institute approaches as well as work underway through the National Violence Against Women Network and the Scottish Government.

### **Adapting our training offer**

Adapting to the conditions of Covid-19 will mean providing an array of awareness raising and training across the spectrum of violence against women, including working with men as outlined above. We have identified that this should include developing a module to raise awareness with men and boys as allies in changing culture and behaviour,

*“I spoke to (project worker) constantly and she helped me leave. She was able to help me with everything – even if she identified I needed help from other services she supported me to access them, she didn’t just send me off, she was there every step”... “if I hadn’t escaped when I did... the support of this [project] ... I’d have ended up dead”.*

Women’s Aid East and Midlothian’s Substance Misuse Service - Survivor

## Offender Management

### East Lothian

#### Key Data

The key data has shown no significant change throughout the reporting year of 2019-20, with Q2 seeing 57 RSOs subject to MAPPAs oversight and Q3 identifying 55 individuals, so the overall numbers remained relatively static. Of greater note was the reduction from 20 RSOs in Q1 to only 14 by Q4 subject to Justice Social Work statutory supervision. The majority of RSOs were subject to Level 1 oversight and managed by way of the Police Scotland and Justice Social Work Level 1 Review process. 2018/19 saw one individual managed at Level 3 over two separate quarters (Q3 and Q4) and two Category 3 cases (more details below). It would seem that year on year, the East Lothian data for MAPPAs cases has been stable for RSOs with the numbers ranging from 50 to 58 over the last three years.

#### Current Themes

##### Environmental Risk Assessments (ERAs)

The Scottish Government published updated National Accommodation Strategy for Sex Offenders in Scotland (NASSO) guidance in September 2019. In this reporting year, East Lothian have managed to fully address the backlog of ERAs across the County with all appropriate sexual offenders now having a current risk assessment. These are now subject to review, in line with guidance, and this process is supported by partners in Police Scotland and across the Council and Health & Social Care Partnership.

##### Offence-focused Interventions

Focused work continues to be completed by way of inclusion in Moving Forward: Making Changes - the group work programme facilitated by partners in the Community Intervention Service for Sexual Offenders (CISSO), based in Edinburgh. Individual work is completed by social workers in East Lothian and, where appropriate, individuals may be required to attend the group programme or undertake further 1:1 work with a member of the CISSO service. It is noted that CISSO provide a service for those who have cognitive impairments, for individuals whose offending is solely related to the internet, as well as the full programme for more seriously harmful sexual offending.

##### Multi-Agency Public Protection Arrangements (MAPPAs)

East Lothian has continued to hold regular Risk Management Case Conferences for individuals convicted of both sexual and violent offences. These meetings have representation from all the relevant agencies and develop robust Risk Management Plans for ratification by the MAPPAs Level 2 Board – this mechanism of oversight has worked well throughout the reporting year. It is noted that there is a new Justice Social Work Sexual and Violent Offender Liaison Officer (SAVOLO) and he has improved the RMCC process to provide more detailed plans that include scenario planning and appropriate formulation.

### **Serious Incident Reviews**

In 2019/20 there were FOUR Serious Incident Reviews completed within East Lothian – this was a significant increase on previous years. None of the assessments progressed to a Comprehensive Review with the Initial Analyses being considered as appropriate and signed off by the Care Inspectorate. The SIRs were completed due to further offending behaviour relating to both violent and sexual offences within the domestic and non-domestic contexts.

### **Working with Women**

CONNECT, which is a multi-agency group for woman at risk of, or involved in offending continued to run on a weekly basis. CONNECT offers women a psychosocial groupwork programme to educate them around increasing confidence and self-esteem, healthy decision making, communication skills etc. A new relationship was forged this year with a local community café to allow the women to enjoy a hot lunch. Some of the afternoon activities that encourage women to engage in local activities and expand their social capital include, yoga classes, visits to the Scottish Parliament and guided walks with the East Lothian ranger service.

### **Workforce**

In May 2019, 18 staff attended 'Trauma Enhanced' Level 3 training. All Social Workers and Social Work Assistants work intensively with service users who have involvement in the Justice System and have experience of trauma. The Unpaid Work staff take out groups of individuals who have been convicted of crimes for six hours at a time in work parties. Many of these people have both caused, and experienced some level of trauma, so it is essential that all staff benefit from Trauma training. Seven Social Workers and Social Work Assistants have now completed Safe & Together training. All Social Workers staff have completed the Risk Practice Training run by the RMA and, as appropriate, undertaken refresher training for Stable & Acute and RM2000S/V Risk Assessment Tools for working with sexual offenders.

### **Category 3**

We have continued to fulfil our responsibilities in relation to the supervision of any Category 3 service users released from custody, and have robust multi-agency pre-release plans in place, including the wide ranging use of electronic monitoring.

### **Voluntary Throughcare**

Voluntary Throughcare by Social Workers rather than Social Work Assistants has been offered for those being released from prison who present a high or very high risk of harm. This has promoted continuity of service during the resettlement period to support partner agencies who have taken over the lead. We have also chaired pre-release RMCC's for a couple of high risk individuals being released at sentence end date, without formal supervision, to support the detailed handover process from Justice Social Work to Police Scotland.

### **Learning from Case Reviews**

The MAPPA Operational Group (MOG), which meets quarterly, considers all Initial and Significant Case Reviews across the Lothian and Borders area. The Lothian and Borders Strategic Oversight Group (SOG) has final sign off for these recommendations. Lothian and Borders made a decision that when a sexual offence has been committed an Initial Case Review (ICR) notification report is triggered; this is reviewed by the SOG chair who states if this should progress to a full ICR or not; and this is then sent out to all SOG members to ratify or challenge that decision.

### **Improvement Plan**

The Offender Management Group reviewed the Improvement Plan in February 2020 with the proposed updates passed to the Public Protection Committee for ratification

Agreement was reached that the Police Scotland OMU DS and Justice Social Work SAVOLO would attend all RMCCs, regardless of Responsible Authority allocation – this will promote consistency and improve the robustness of Risk Management Plans

There were two MAPPA L1 Audits in the Reporting Year (June and December) and relevant learning was noted with a plan for a learning event having to be cancelled due to the impact of the Covid-19 pandemic

MAPPA Exit Questionnaires were scheduled for Review but this was delayed until June 2020 due to the small numbers of Order and Licence completions in the first six months of their use.

### **Challenges & Priorities (2020/21)**

In the final weeks of the reporting year, Scotland entered a National lockdown – all multi-agency meetings and case conferences were moved onto a digital platform and there was no face-to-face service user contact in East Lothian until June 2020

ViSOR – this issue is yet to be resolved and the East Lothian terminal was disconnected in October 2019, following the departure of the identified Local Point of Contact. Partnership working with Police Scotland colleagues is the primary route for information sharing and a decision will be made by the Chief Social Work Officer/Chief Executive in due course

The impact of lockdown on Court closures and the expected rise in domestic abuse and internet-related sexual offending will likely have far-reaching implications for Justice Social Work service delivery and offence-focused work interventions

Development of risk-based interventions which will support desistance and improve equal access to vital services – this will be a key priority for Justice Social Work in East Lothian in relation to all those with convictions, not just those considered to present the highest risk of causing harm

Continued development of relationships and collaborative projects with partners across Community Justice and Public Protection

Further workshop and annual events to improve practitioner understanding of risk and need for sexual and violent offenders – awareness of the growing number of Category 3 individuals, including those convicted of terrorist offences

Development and use of IT (e-Safe) to support desistance and monitor the ‘critical few’ who present the greatest risk

## **Offender Management - Midlothian**

### **Key Data**

Quarterly data, accompanied by an analytical narrative is used to monitor performance and provide a level of scrutiny and assurance. At the end of quarter 4 (2019/20), the total number of sexual offenders subject to MAPPA at the period end date was 43; the lowest in the reporting year. The number of sex offender cases managed at MAPPA Level 1 at the period end stood at 40; again the lowest in the reporting year. There were no sex offender cases managed at MAPPA Level 3 during the reporting year.

### **Current Themes**

#### **Environmental Risk Assessments (ERAs)**

The Scottish Government published updated National Accommodation Strategy for Sex Offenders in Scotland (NASSO) guidance in September 2019. Midlothian continues to assess and review all sexual offenders in line with this guidance. These are now subject to review, in line with guidance, and this process is supported by partners in Police Scotland and across the Council and Health & Social Care Partnership.

#### **Women’s Group Work Service – Midlothian Spring Service**

The Spring service is relevant to Public Protection due to the number of women attending the service who have experiences of childhood abuse and domestic violence. All women on a Community Payback Order are considered for the Spring service. The service offers one to one support and programmed group work. Through support offered, opportunities are created to cope with difficult and stressful situations, manage complex emotions, build self-esteem and reduce isolation, improve health, wellbeing and safety and access a range of supports. In 19/20 there were 20 women referred to spring with 18 active users. Women made progress in all ten areas of the Outcome Star assessment tool (e.g. managing mental health, progress made was 64%). 25 women started phase 2 (group work), up from 12 the previous year.

#### **Women’s Supper**

A complementary women’s service is the ‘Women’s supper’; an example of a true community partnership project. The service was introduced following identification of a gap in service for a women only space to feel safe and feel less isolated and access services

should they so desire. The Women's Social Supper was created in October 2019. Staff from Justice Social Work including Spring, Substance Misuse staff, Change Grow Live, Children's First, Horizon's Cafe and Mid and East Lothian Drugs provide support, encouragement and signposting to the women and children as well as the various activities each week. Access to Industry, Midlothian Housing, Health in Mind, Peer Support, With You Support Service, Citizens Advice Bureau as well as NHS Sexual Health staff have provided various services including dishwashing and food service and support to the women that attend. From October 2019 to March 2020, over 300 women and 100 children have attended.

### **Serious Incident Reviews**

In 2019/20 there were less than five Serious Incident Reviews completed within Midlothian. Of the four cases, three were progressed as Initial Analyses, whilst one was considered using the Comprehensive Review framework. All were considered as appropriate and signed off by the Care Inspectorate. An internal SIR review was undertaken by the previous Service Manager for Justice in order to identify learning opportunities for the Justice team. Data analysis showed that each of the individuals involved in an SIR were 18-26 year old men who had complex tri-needs (Justice involvement, substance misuse and poor mental health). From this review, the team developed a referral system into the established No 11 Allocation Meeting (see below). This allowed for the identification of bespoke support packages for this group of men involved in the Justice system. Further, Midlothian Justice created a new Desistance Team Leader post to look at supporting future service design and delivery for men on Community Payback Orders.

### **Category 3**

Midlothian has supervised less than five Category 3 service users over this reporting period. Each of the individuals were discussed at extensive multi-agency pre-release planning meetings with a range of agencies feeding into the process. Comprehensive risk management plans were then devised to assist in the management, supervision, monitoring and scenario planning for each person.

### **Improvement Plan**

The Offender Management Group reviewed the Improvement Plan in February 2020 with the proposed updates passed to the Public Protection Committee for ratification

Agreement was reached that the Police Scotland OMU DS and Justice Social Work SAVOLO would attend all RMCCs, regardless of Responsible Authority allocation – this will promote consistency and improve the robustness of Risk Management Plans

There were two MAPPA L1 Audits in the Reporting Year (June and December) and relevant learning was noted with a plan for a learning event having to be cancelled due to the impact of the Covid-19 pandemic

MAPPA Exit Questionnaires were scheduled for review but this was delayed until June 2020 due to the small numbers of Order and Licence completions in the first six months of their use.

### **Learning from Case Reviews**

The MAPPA Operational Group (MOG), which meets quarterly, considers all Initial and Significant Case Reviews across the Lothian and Borders area. The Lothian and Borders Strategic Oversight Group (SOG) has final sign off for these recommendations. Lothian and Borders made a decision that when a sexual offence has been committed an Initial Case Review (ICR) notification report is triggered; this is reviewed by the SOG chair who states if this should progress to a full ICR or not; and this is then sent out to all SOG members to ratify or challenge that decision.

### **Midlothian Sexual Abuse Services**

Midlothian continued to provide extra funding to Edinburgh Rape Crisis to keep waiting times at a minimum. This funding is continuing in 2020/21.

### **Challenges and Priorities**

It is worthy to note that in the March 2020, Scotland entered a national lockdown in the context of a global pandemic. Consequently, Justice's core business has been impacted on significantly. The Justice team were working from home initially before moving to an A/B work pattern within the office. Midlothian's default positions for staff continues to be working from home wherever possible. The Scottish Courts ceased full operational business and as such work generated from the Courts reduced significantly. Midlothian Justice has developed a route map in line with local and National guidance alongside risk assessment covering all aspects of daily business. Justice clients have been RAG rated (Red, Amber, Green) based on risk and need and have been managed in accordance with their 'rating'. Contact has been primarily by phone although other forms of contact including face-to-face, where proportionate, has been maintained. The framework will continue to be used moving forward over the course of 2020-2021.

The Number 11 Recovery Hub co-locates all mental health, substance misuse and Criminal Justice staff. A key priority for 2019/20 was to ensure that these agencies, as well as the voluntary organisations who are located in the hub, can work together in a more co-ordinated way to create healthier and safer communities. The No 11 Allocation Meeting is a positive example of collaborative working. This visionary forum brings together Health, Substance Misuse Services, Social Work, Housing, and third sector agencies and gives consideration to bespoke packages of care/support/treatment to individuals who use No 11. With a signed Information Sharing Protocol with Scottish Prison Service, Midlothian is now aware of individuals returning to our communities. The forum has seen excellent examples of holistic support being offered to services users. In-reach work in the prisons and then transitioning support to the community is now coordinated, person-centred and solution focused; involving Midlothian specific services, resources and agencies. The effective

working partnerships within Number 11 enabled services to continue to work effectively with clients and patients during the start of 'lockdown'.

To support the implementation of the Safe and Together Model in 2019, the Justice Team continues to work closely with Children and Families Social Work by offering Midlothian Families First, a structured intervention working with un-convicted male perpetrators of domestic abuse. MFF follows the same principles as the Caledonian programme, inclusive of women and children's workers offering support, safety planning and advocacy services for partners, ex-partners and children. MFF are now open to referrals following contact with police. Work is ongoing with colleagues in communication to open this up to self-referral and wider H&SC agencies.

To further aid our supervision and monitoring, Midlothian Justice has a licence with 'ESafe'. This agency facilitates the monitoring of home computer devices to assess an individual's internet use, thus providing a further level of unique risk assessment/management. Midlothian Justice will continue to develop links with this agency to determine if further licenses can be purchased when necessary.

## **Learning and Development**

During the year, a review of the staffing arrangements in the Public Protection Office saw a reduction in the staffing arrangements for learning and development, with a subsequent



departure of the Learning and Development Co-ordinator, and reduction in support staff arrangements.

EMPPC reviewed all Public Protection training across the lifespan and have combined the Level 1 Adult Support and Protection, Child Protection, Violence Against Women and Girls, Offender Management into one training package of Public Protection is Everyone's Responsibility. This also includes a section on Fire Risks and how to refer to SFRS.

During the year we delivered 45 face to face Public Protection training courses, 17 fewer than the previous year. 960 staff from across the partner agencies in East Lothian and Midlothian attended our events, with just over 50% of attendees coming from social work services, and 20% coming from the third sector.

In addition, almost 3000 staff across the two Council areas completed on-line Public Protection training modules (via the 'Learn Pro' training platform).

Our Learning and Development sub-group and Performance and Quality Improvement sub-group regularly review our performance indicators in relation to training. In the year we had two indicators to measure effectiveness:

The percentage of attendees to report an increase in their knowledge from attending face to face training by thematic area: for the year, this was 73% of those who responded (across all themes);

The percentage of attendees who reported that they had enough information to put their learning into practice after attending face to face training: for the year, this was 93% (across all themes).

The benefits of attending training has come through in some of the feedback from attendees:

*"I am currently working with women who have been victims of domestic abuse and the training has helped me to feel more confident in my approach to these cases. I am joint-working a couple of cases and have felt like I can ask questions and challenge decisions and approaches. I have also used activities and resources from this training in one to one sessions with a woman as part of a parenting capacity assessment"*

*"(What I have learned) Adapting policies/practices. Starting new conversations"*

*"More vigilant about behaviours displayed by young people, verbal and non-verbal communication"*

## **Next steps**

We have previously measured the impact of training on practice after a three-month period, but were not able to undertake the work to report on this following the departure and loss of our training co-ordinator post during the year. This is an area for development going forward.

Coming into the COVID 19 pandemic at the end of this reporting period we put a hold on face to face training. Developing a sustainable model for future training in Public Protection, developing and delivering training by virtual platforms and alternative methods to attendance in person are key priorities for the coming year.

## Communications

### What we have done

During the period of this annual report, a number of awareness raising initiatives in relation to core aspects of Public Protection across the East Lothian and Midlothian geographical areas. These are detailed elsewhere in this report. Our communications sub-group met once in the year, in May 2019.

### What we will do next

In the course of 2020-21 we will:

- revise our Communications Strategy for the Public Protection Committee and our approach to how we plan and co-ordinate our communications.
- review the membership and terms of reference of our communications sub-group; and
- progress plans to refresh and update our website.