



## NOTICE OF THE MEETING OF MUSSELBURGH RACING ASSOCIATED COMMITTEE

TUESDAY 7 JANUARY 2020, at 9.30am  
COUNCIL CHAMBER, TOWN HOUSE, HADDINGTON

---

### Agenda of Business

#### Apologies

#### Declarations of Interest

*Members and Officers should declare any financial and non-financial interests they have in the items of business for consideration, identifying the relevant agenda item and the nature of their interest*

1. Minute of Meeting on 1 October 2019 for approval **(pages 1-6)**

#### *Racecourse Executive Reports*

2. Health & Safety Report  
Report by Racecourse Health & Safety Officer and General Manager **(pages 7-46)**
3. Operations & Commercial Report  
Report by Racecourse Senior Operations and Commercial Manager **(pages 47-48)**
4. General Manager's Report  
Report by Racecourse General Manager **(pages 49-52)**
5. Finance Report  
Report by Racecourse General Manager and Financial Manager **(pages 53-78)**

#### *East Lothian Council*

6. Procurement/General Update  
Report by Depute Chief Executive (Resources and People Services) **(pages 79-80)**

#### *Racecourse Report*

7. Honorary Badge List  
Verbal Update

**Alex McCrorie**  
Chief Executive  
John Muir House  
Haddington

24 December 2019





**MINUTES OF THE MEETING OF  
MUSSELBURGH RACING ASSOCIATED COMMITTEE**

**TUESDAY 01 OCTOBER 2019  
QUEEN'S STAND, MUSSELBURGH RACECOURSE, MUSSELBURGH**

---

**1**

**Committee Members Present:**

Councillor F O'Donnell (Chair)  
Councillor K Mackie  
Councillor S Currie  
Mr R Miller-Bakewell

**In Attendance:**

Mr B Farnsworth, Racecourse General Manager  
Mr A McCrorie, Depute Chief Executive (Resources and People Services), ELC  
Mr C Grilli, Service Manager, Legal and Procurement, ELC  
Ms J Mackay, Senior Communications Adviser, ELC

**Clerk:**

Ms S Birrell

**Apologies:**

Councillor Forrest  
Mr Anderson Green

**Declarations of Interest**

None

## **1. MINUTES OF MEETING OF 24 SEPTEMBER 2019 FOR APPROVAL**

The Chair announced that the Committee would meet in private business at the end of the meeting, in order to approve the private minutes from the meeting held on 24 September 2019. She was happy to take amendments to the public minute at this time.

Mr Miller-Bakewell asked for the addition of a post-meeting note at item 6 to clarify a procedure relating to the Minute of Agreement between the LRS and East Lothian Council.

### **Decision**

The Committee agreed, subject to the inclusion of a post-meeting note, to approve the public minutes as a true record.

## **2. REVIEW OF ITEM 5, MINUTE OF THE MEETING OF 25 JUNE 2019**

The Service Manager, Legal & Procurement, East Lothian Council, Mr Grilli explained that this part of the minute of June's meeting had been brought back to Committee because it should have read that the decision had been delegated to the Racecourse General Manager, the Racecourse Finance Manager, and the Depute Chief Executive, (Resources and People Services), East Lothian Council, in consultation with the Chair of MRAC. It was not competent to delegate to the Chair in consultation with Officers as had been minuted and approved.

### **Decision**

The Committee agreed to note the change to the minute of the meeting of 25 June 2019.

## **3. NOTING OF THE ANNOUNCEMENT OF THE OUTCOME OF THE PROCUREMENT PROCESS**

The Service Manager, Legal & Procurement, East Lothian Council, Mr Grilli announced that Chester Racecourse had been identified as the preferred tenderer in the procurement process, which would now enter a ten day standstill period. After this period, the implementation of the move to a third party operator would begin. Several issues would require consideration, including the TUPE. He added that Harper MacLeod would be supporting this process.

Mr Miller-Bakewell asked if all contracts were up to date. The Chair confirmed that she would be meeting the Racecourse General Manager in order to complete and sign off his contract, and that he would retain delegated authority to sign off the contracts of all other staff. She added that there were no outstanding, substantive issues regarding contracts, apart from the addition of a standard place of work clause which would be added to all contracts. Mr Farnsworth reported that this would provide security to Racecourse employees.

Mr Miller-Bakewell asked why Harper MacLeod had been engaged to assist in the TUPE process when the Racecourse had engaged Hunter Adams HR consultants in the past. Mr Grilli explained that TUPE was a legal process and it would be practical to ensure it was carried out according to statutory requirements. Councillor Currie added that TUPE was an important and laborious procedure, and engaging the services of Harper MacLeod would ensure nothing would be missed. He outlined that the agreements made via TUPE would remain in place until such time as a new contract was accepted by an employee.

The Chair mentioned that solicitors who had worked with the Racecourse in the past would not be involved in the TUPE, and that in discussion with the Racecourse's Trade Union representative it had been confirmed that some members of staff would require to meet in one-to-one meetings or in small groups. She added that she would remain part of the process but would need to be mindful of other commitments, and of the need for staff to feel supported through the TUPE.

Mr McCrorie added that the Committee should be made aware that the decision would also be taken to a full meeting of East Lothian Council for noting.

The Chair thanked those present for ensuring the identity of the preferred bidder had not entered the public domain before today's announcement.

#### **Decision**

The Committee agreed to note the verbal report.

#### **4. RACECOURSE ACCOUNTS**

The Chair explained that the approval of the signed Racecourse accounts would be heard in public, and discussion of the Audit Report would take place as part of private business. She added that the Accounts had been signed, finalised and circulated, and Mr Farnsworth had nothing to add to what had been presented, although he was happy to take questions.

Mr Miller-Bakewell stated that members of the LRS had reservations and concerns over the conclusions of these accounts.

#### **Decision**

The Committee agreed, with one abstention, to approve the final accounts.

#### **SUMMARY OF PROCEEDINGS – EXEMPT INFORMATION**

The Chair informed the MRAC that they would exclude the public from the following business containing exempt information by virtue of paragraph 6 (information concerning the financial or business affairs of any particular person other than the Authority) of Schedule 7A of the Local Government (Scotland) Act 1973.

*Sederunt: Miss Mackay left the meeting.*

#### **4. RACECOURSE AUDIT REPORT**

The Racecourse Audit Report was approved with one abstention.

#### **5. PRIVATE MINUTE OF MEETING ON 24 SEPTEMBER FOR APPROVAL**

The minutes were approved as a true record with one abstention.









**REPORT TO:** Musselburgh Racing Associated Committee  
**MEETING DATE:** 7 January 2020  
**BY:** Racecourse Health & Safety Officer and General Manager  
**SUBJECT:** Health & Safety Report

---

**2**

## **1 PURPOSE**

To advise the MRAC of Health and Safety Management at Musselburgh Racecourse.

## **2 RECOMMENDATIONS**

2.1 The MRAC are asked to note the report.

## **3 BACKGROUND**

### **3.1 HEALTH AND SAFETY DIARY DATES TO NOTE:**

- **21/10/19** – A full medical Table Top Incident planning meeting held in the Lothian Suite at Musselburgh Racecourse. All relevant parties attended to exercise events and incidents that may occur during any given raceday
- Health and Safety Representative Meetings have / are being held at Musselburgh Racecourse:

**Attendees** – Adam Nish – Caretaker / Philip Duncan – Operations Manager / Rory Innes – Track Manager / Elizabeth Allen – Office Manager / Steve Horlick – Health and Safety Advisor

**22/01/19 – Hospitality Room Musselburgh Racecourse**

**23/10/19 – Hospitality Room Musselburgh Racecourse**

**12/11/19** – Annual review of all racecourse risk assessments – Ongoing process to ensure all documentation is relevant, factual and appropriate.

- **20/11/19** – Full internal racecourse management Major Incident Table Top Exercise meeting was held within the Lothian Suite at Musselburgh Racecourse. Outside parties from the Emergency Services attended. Police / Medical Services. Full scenario based exercise to review procedures and reactions to incidents that may occur on any raceday.

**The Emergency Services advise that they are moving away from rigid protocols and moving towards procedures, intended to allow a greater degree of common sense and flexibility to deal with emergency incidents.**

- **11/12/19** - Annual Safety Advisory Group meeting to be held at the Police room, Penston House, MacMary Industrial Estate. Philip Duncan, Ops Manager and Steve Horlick, Racecourse Safety Officer to attend.

The Racecourse will present a proposal to the Group to consider Linkfield Road as a one-way system to improve the safety of the access and egress on Ladies Day.

- **January 2020** – All annual servicing and testing of services to commence in line with Safety Certificate requirements. Safety Certificate application to be made February 2020.
- **January 2020** – Annual Fire Risk Assessment to be carried out on all buildings of the racecourse.
- **January 2020** - All contractors' information letters to be reviewed by the end of March to ensure all contractors visiting the racecourse adhere to safety protocol at all times. The letter will also detail that individual contractors need to possess the correct and required documentation and insurances that are to be made available on request at any time by Musselburgh Racecourse.

## 3.2 STAFF TRAINING UPDATE

### **Training Requirements:**

- First Aid Training – A number of staff will be nominated to attend a First Aid course within January 2020. This will ensure that a nominated First Aid trained staff member is within each racecourse department at all times. Date to be completed March 31<sup>st</sup> 2020.

## 3.3 HEALTH AND SAFETY

### **RACECOURSE NON RACEDAY ACTIVITY:**

**Objective:** In order to fully maximise the use of the racecourse on non racedays as well as racedays, the Musselburgh Racecourse Management assessed it to be safe to organise non raceday events to be held on and within the racecourse boundaries.

Following the objections by Enjoy Leisure Ltd on a number of occasions to these events being held, it was agreed to contract an Independent Health and Safety Consultant to assess the issues raised to the non raceday events being held at regular times.

The Independent Consultant, Ethos Environmental Services, assessed in detail the following aspects:

- The risk at each individual golf hole – 9 holes
- The trajectory of golf balls as they are hit from all areas of the golf course

- The inclusion of designated exclusion zones around certain holes that have been identified as the highest risk areas.

Their full report (available as a separate document – background paper 7.1) has assessed that the aforementioned non raceday activities/events can be held safely through management control measures and recognised safety procedures.

The existing Risk Assessments have been updated to include Ethos Environmental Services technical data, as stated above (see background paper 7.2). The control measures involving the exclusion zones at certain holes, have been included in the Risk Assessments.

**Conclusion:**

It is assessed through Musselburgh Racecourse Management Risk Assessment processes and the report lodged by Ethos Environmental Services, that the planned events and activities on non racedays can be safely controlled and managed to create a safe environment. The risk to participants, staff, golfers and the general public can be controlled to an acceptable level.

**3.4 CAPITAL EXPENSE UPDATE**

Desirable Future Capital Expenditure:

- Continuous maintenance on recognised safety issues throughout the site has taken place. The Main Stand Grandstand steppings have been inspected and repaired where necessary as well as the tarmac area and manhole covers in front of the Betting Shop.
- It has also been highlighted continuous repairs are required around the Parade Ring and the steppings as stated. Regular checks take place to ensure any issues that arise are dealt with quickly. Checks and remedial works required are documented through the Inspection Forms used on a raceday and non raceday.
- The surface around the grandstand is deteriorating. It will need attention as the deterioration will accelerate, especially during the winter months.

**3.4 LEGISLATIVE CHANGES**

No changes to report to affect this period. All new legislation has been issued on 1<sup>st</sup> October 2019. No relevant changes to affect the current situation.

**3.5 ONGOING INDIVIDUAL HEALTH AND SAFETY ISSUES**

**Claims** – There are currently no claims ongoing against the racecourse.

**4 POLICY IMPLICATIONS**

4.1 None.

## **5 INTEGRATED IMPACT ASSESSMENT**

- 5.1 The subject of this report does not affect the wellbeing of the community or have a significant impact on equality, the environment or economy.

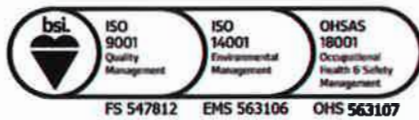
## **6 RESOURCE IMPLICATIONS**

- 6.1 Financial - none.  
6.2 Personnel - none.  
6.3 Other - none.

## **7 BACKGROUND PAPERS**

- 7.1 Appendix 1: Ethos Env Independent Risk Assessment Report  
7.2 Appendix 2: Risk Assessment – example 1  
7.3 Appendix 3: Risk Assessment – example 2

<b>AUTHOR'S NAME</b>	Steve Horlick / Bill Farnsworth
<b>DESIGNATION</b>	Safety Officer / GM
<b>CONTACT INFO</b>	07912 343 131 / 07710536134
<b>DATE</b>	Wednesday, 18 December 2019



ethosenvironmental

---

**TECHNICAL REPORT P7893**

---

**MUSSELBURGH RACECOURSE  
AND GOLF COURSE**

---

**BALL STRIKE RISK  
ASSESSMENT EXERCISE**

---

---

***Prepared For***

---

**Musselburgh Racecourse**  
Linkfield Road  
Musselburgh  
EH21 7RG

---

***Prepared By***

---

**ETHOS ENVIRONMENTAL LIMITED**  
**HEAD OFFICE**  
Unit 16 Dumbryden Industrial Estate  
32 Dumbryden Road  
EDINBURGH  
EH14 2AB

---

Tel: 0131 453 5111



E-mail: [scott@ethosenvironmental.co.uk](mailto:scott@ethosenvironmental.co.uk)

**AUGUST 2019**

---

P7893	Page 1 of 31	Ethos Environmental Limited
Golf Risk Assessment		Health and Safety Risk Assessment
Musselburgh Racecourse		August 2019

## QUALITY STATEMENT

<b>Project Title</b>		Health and Safety Consultancy Racecourse	<b>Project Number</b>	
			P7893	
<b>Document Title</b>		Golf Risk Assessment Report	<b>Date of site work</b>	<b>Report Issue Date</b>
			15/08/2019	27/11/2019
<b>Revision</b>	<b>Date Written</b>	<b>Filename</b>	P7893 Golf Risk Assessment Report	
Issue: 1.2	24/09/19	<b>Description</b>	Amended version – issue with risk assessment repaired and diagrams	
		<b>Activity</b>	<b>Prepared By</b>	<b>Checked By</b>
		<b>Name</b>	Scott Carlin	Brian Gardner
		<b>Signature</b>		
<b>Issue</b>		<b>Filename</b>		
		<b>Description</b>		
			<b>Prepared By</b>	<b>Checked By</b>
		<b>Name</b>		
		<b>Signature</b>		

# Contents

---

QUALITY STATEMENT.....	2
Contents.....	3
1.0 Introduction .....	4
2.0 Background .....	5
2.1 Golf Course.....	5
2.2 Musselburgh Racecourse .....	5
3.0 Risk Assessment.....	6
3.1 General.....	6
3.2 Rationale for Risk Assessment .....	6
3.3 Hole Evaluation .....	7
Hole 1 .....	7
Hole 2 .....	7
Hole 3 .....	7
Hole 4 .....	8
Hole 5 .....	8
Hole 6 .....	8
Hole 7 .....	8
Hole 8 .....	8
Hole 9 .....	8
3.4 Golf Course Good Practice .....	9
3.5 Racecourse Good Practice .....	9
4.0 Conclusions .....	10
Appendix 1: Layout of Golf Course.....	11
Appendix 2: Golf Course Hole Information .....	12
Appendix 3: Average Shot Length .....	17
Appendix 4: Average Shot Distribution .....	19
Appendix 5: Evaluation of Hole Shot Spread .....	20
Appendix 6: Elevated Risk of Offline Golf Balls .....	30
Appendix 7: Risk Assessment .....	31

P7893	Page 3 of 31	Ethos Environmental Limited
Golf Risk Assessment		Health and Safety Risk Assessment
Musselburgh Racecourse		August 2019

## 1.0 Introduction

---

At the request of Mr Bill Farnsworth, General Manager, Musselburgh Racecourse, a risk assessment exercise was undertaken to assess the risk of golfing activities on personnel involved with proposed non-race activities at the Musselburgh Racecourse.

The Musselburgh Racecourse surrounds the Musselburgh Old Course Golf Course, which is on land in the middle of the course.

This assessment was undertaken by Mr Scott Carlin TechIOSH, Senior Consultant, with Ethos Environmental Ltd. on 14<sup>th</sup> August 2019.

P7893		Ethos Environmental Limited
Golf Risk Assessment	Page 4 of 31	Health and Safety Risk Assessment
Musselburgh Racecourse		August 2019



## 2.0 Background

---

### 2.1 Golf Course

**Musselburgh Links – The Old Golf Course is reputed to be the oldest in the world. It is located on “common good land”<sup>1</sup> in the centre of the Musselburgh Racecourse.**

### 2.2 Musselburgh Racecourse

**Musselburgh Racecourse is a horse racing venue located in the Millhill area of Musselburgh, East Lothian, close to the River Esk. It is the second biggest racecourse in Scotland.**

**The course offers both flat racing and National Hunt meetings (though it only introduced jumping in 1987) and is 2 km long. In the middle of the course is a nine-hole golf course, dating from at least 1672.**

---

<sup>1</sup> ‘Common Good Land’ is defined within the Land Reform (Scotland) Act 2003 (hereinafter referred to as the “the 2003 Act”). In terms of section 6(e) of the 2003 Act, access rights are not exercisable over land which has been developed or set out (i) as a sports or playing field; or (ii) for a particular recreational purpose. However, under Section 7 of the 2003 Act, this provision only applies when the recreation area in question is in use for that purpose (i.e. horse racing or as a golf course). Outwith these times the racecourse and golf course cannot prevent members of the public from taking access to the land.

P7893		Ethos Environmental Limited
Golf Risk Assessment	Page 5 of 31	Health and Safety Risk Assessment
Musselburgh Racecourse		August 2019

## 3.0 Risk Assessment

---

### 3.1 General

It is the intention of Musselburgh Racecourse to hold other events, outwith the racing calendar such as school trips, sponsored walks and business events.

Currently, the golf course does not operate during racing meetings, as this would introduce an unacceptable level of risk to both the horses and the riders.

The land on which the Golf Course rests is "common good" land (see Ref 1 above) which allows the general public to access the land. It is not uncommon for the public to walk across the land on days when golf is operating and golfers must take due care, to ensure that members of the public are not injured by balls.

The course typically runs from a west to east direction and back again, with the outward holes on the south of the land and the inward across the north side. The holes run more or less parallel to the race circuit, with the inner jump circuit, closest to the golf course.

In any golf course, golfers are required to take due care and attention in order not to injure other golfers, greenkeepers or members of the public.

From the Racecourse point of view, the racecourse must also ensure that no members of the public enter the track area when horse racing is taking place.

Having additional members of the public occupying areas around the course will introduce an elevated risk of ball strikes, however this is primarily due to the fact that there are potentially more targets to hit, rather than an increase in offline golf shots.

### 3.2 Rationale for Risk Assessment

In order to evaluate the risk to persons occupying the racecourse when golfing activities are being undertaken, the following things were assessed.

1. Which Holes in the golf course present the most significant risk of an accidental ball strike injury.
2. The average distance of each hole and the average distance of each golf shot, given the anticipated club selection.
3. The average dispersion of an average male amateur golfer aiming for a 160 ft (48.7m) target.
4. The likelihood of offline shots reaching the racecourse and where.
5. Controls which can be implemented to further minimise residual risk.

This information was included in the final risk assessment document.

P7893		Ethos Environmental Limited
Golf Risk Assessment	Page 6 of 31	Health and Safety Risk Assessment
Musselburgh Racecourse		August 2019

### 3.3 Hole Evaluation

#### Hole 1

Hole 1 is situated to the west of the golf course. The main tee (yellow) is situated close to the starter shed on the northwest of the site. The tee crosses the racecourse and the ball is played in a southerly direction, playing towards the west stand of the racecourse.

It is likely that golfers may use a driver at this hole in order to get closest to the flag. The prevailing wind is westerly and as such, players will need to contend with a cross wind across the hole, which will assist in keeping balls towards the golf course and away from the racecourse on the west side.

It was noted that in the average distribution on aiming from a 160yrd target, some balls were short 100ft (30m) and 100yds (30m) wide.

Significantly overshooting the green may result on balls landing on the Racecourse, south of the green (45m from centre of green) or towards the stand to the south west of the site (50m from centre of green). It is understood that there are on occasions marquees erected on the internal side of the racecourse fence around Hole 1 green and parallel to Hole 2. This may also be at risk from overshooting (48m).

#### Hole 2

Hole 2 runs west to east on the south side of the golf course. This hole runs parallel to the start/finish straight of the racecourse. Although persons occupying the racecourse at the area close to the stands are likely to be unaffected by personnel teeing off from the yellow tees on this hole, there is a risk that wayward shots may find itself on the racecourse. It is unlikely that personnel parallel with the second tee are likely to be affected as most tee shots will begin in a straight line before veering off in either a *hook* or a *slice*.

The hole mostly affects the inner circuit of the course, which is used for jumps. It is possible that schools may occupy this part of the course for measuring the length, width and height of the course as part of a school exercise.

#### Hole 3

Hole 3 also runs west to east on the south side of the golf course. This hole runs parallel to the start/finish straight of the racecourse, although is orientated in a slight north easterly direction, directing it slightly away from the racecourse.

Again, persons occupying the racecourse at the area close to the stands are likely to be unaffected. It was noticed that during Ladies Day, a marquee is parallel to the tee of Hole 3, however, this is unlikely to be affected by wayward golf shots.

Personnel teeing off from the yellow tees on this hole, will be level with the middle of the start finish straight of the course. Personnel level with the Tee are not at risk from tee shots from the Hole 3 but may be affected by shots towards the green from Hole 2. There is a slight risk that balls may stray onto the inner circuit of the course parallel with the middle of the fairway.

P7893	Page 7 of 31	Ethos Environmental Limited
Golf Risk Assessment		Health and Safety Risk Assessment
Musselburgh Racecourse		August 2019

#### Hole 4

Hole 4 runs west to east also. It has the tee inside the track and the ball is played over the track to the green which sits beyond the racetracks easternmost point. Given that the golf course is closed during racing meets, it is highly unlikely that balls will interfere with activities being undertaken at the stand areas.

There is a high risk of ball strikes where balls are played over the course and personnel should not be allowed to walk over this location during shots being played. There is also a risk that balls may stray onto the starter position on the south east of the site.

#### Hole 5

Hole 5 runs from the southeast to the northwest. It is a Par 3, with the centre of the green resting approximately 55m from the side of the course. Given the distance of the green from the course, it is unlikely that balls will reach the racetrack or affect any activities being undertaken on the track.

#### Hole 6

Hole 6 runs from northeast to southwest. The green is close to the inner circuit of the track and there is a possibility that balls from this hole may overshoot onto the racetrack. Wayward shots from the tee are more likely to encroach onto the adjacent holes' fairways.

#### Hole 7

Hole 7 is unlikely to end up on the racecourse due to the design of the hole. The hole runs east to west and due to the fact that the hole is a Par 5 with a slight bend at around 170m, golfers are less likely to try to cut the dogleg, too deeply, if at all, for less experienced players.

There is a slight risk that the second shot played on this hole, may enter the racecourse as players aim slightly right to avoid a bunker hazard

#### Hole 8

Hole 8 is a Par 3 which runs in between Holes 9 and 2. It's is unlikely that a wayward shot would reach the track.

#### Hole 9

Hole 9 runs east to west close to the north side of the racecourse. and due to the fact that the hole is a Par 4 with a dog leg around 180m, golfers are less likely to try to cut the dogleg, too deeply, if at all, for less experienced players.

There is a risk that tee shots may enter the racecourse parallel with the fairway.

P7893	Page 8 of 31	Ethos Environmental Limited
Golf Risk Assessment		Health and Safety Risk Assessment
Musselburgh Racecourse		August 2019

### 3.4 Golf Course Good Practice

Most Golf Courses have specific hazard location concerning elevated potential of ball strikes. This is especially pertinent where a green lies close to the tee of the subsequent hole. Local rules may forbid players to play towards greens until other players have left the adjacent tee or similar.

In general, all golfers must be made aware of the “common good” status of the land and to watch for members of the public as well as other golfers, prior to taking a shot.

With regards to potential people on the racecourse, golfers must:

- Never play until personnel in front of you are out of range.
- Never play if you feel a person has encroached too much onto the line of your intended shot. Always ensure they move to a safer position before playing.
- Always shout “FORE” to warn others of stray shots heading in their direction.
- Never play shots if you cannot be certain the intended landing area is clear of other golfers, green staff or members of the public. Utilise playing partners to ensure you are safe and the intended landing area is clear.

These general rules should be adhered to as well as any local course rules. Additional rules pertaining to occupants of the racecourse may also need to be added.

### 3.5 Racecourse Good Practice

If the Racecourse is to allow personnel onto the racecourse when the golf course is in use, personnel should avoid the marked areas on the plans when the relevant holes are in use.

It is also essential that personnel occupying the racecourse are provided with a safety induction which includes the risk of ball strikes.

The induction should cover:

1. Areas of elevated risk, such as where balls are played over the course.
2. What to do in the event of hearing “Fore” (e.g. take evasive action by turning away from the direction of the shout and by covering your face and head with your arms).
3. Always be mindful of golfers in play and pause where there may be an encroachment into the line of the golfers play.
4. Always follow signs and follow steward’s direction.
5. A presentation on the higher risk areas on the course.

It is essential that a “joined-up” approach is agreed when establishing a working set of rules for the racecourse and the golf course.

P7893	Page 9 of 31	Ethos Environmental Limited
Golf Risk Assessment		Health and Safety Risk Assessment
Musselburgh Racecourse		August 2019

## 4.0 Conclusions

---

Analysis of the distribution of golf shots for an average male amateur golfer and the typical distance of shots, suggests that the risk of ball strikes can be managed by:

- creating general exclusion zones within the racecourse which cannot be accessed when the particular holes are in use and
- controlling access through higher risk areas (e.g. areas where balls are played over the racecourse), by either a traffic light system or stewards on event days.

It is essential that the Racecourse and Golf Course come together to formulate a working set of rules that works for both parties, as inductions will need to be provided to personnel occupying the racecourse. Cards for the course may need to mention personnel on the racecourse.

In general, the risks of ball strikes to personnel occupying the racecourse on golfing days can be adequately managed through controlling access to certain areas.

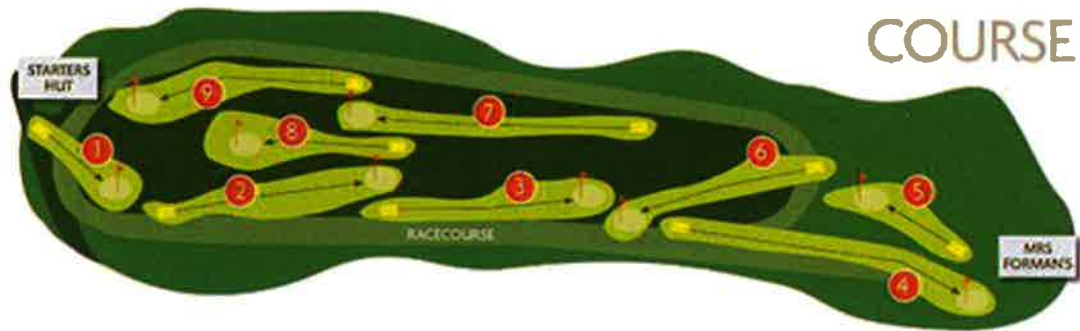
If it is seen that balls are routinely moving outwith the golf area onto the racecourse, then consideration should be given to the installation of appropriate fencing to control the offline shots. However, this will only be necessary where offline balls are routinely occurring and presenting an unacceptable level of risk.

The key issue is finding a solution that works for both the golf Course and the Racecourse. A safe solution can only be developed when both organisations are working together. Such cooperation will ensure that the land can be used more frequently and in general increase the amenity of the land for all parties.

P7893	Page 10 of 31	Ethos Environmental Limited
Golf Risk Assessment		Health and Safety Risk Assessment
Musselburgh Racecourse		August 2019

## Appendix 1: Layout of Golf Course

---



P7893	Page 11 of 31	Ethos Environmental Limited
Golf Risk Assessment		Health and Safety Risk Assessment
Musselburgh Racecourse		August 2019

## Appendix 2: Golf Course Hole Information

---

### 1st Hole – The Short Hole

---

#### Men's

YELLOW 141 Yards, Par 3

WHITE 240 Yards, Par 3

SI 17

#### Ladies

RED 142 Yards, Par 3



---

This hole requires an accurate shot to what can be considered a well-defended green. You may experience some right to left cross winds, and due to the raised green, make sure you take enough club.

**History Trivia:** This hole was added in 1832, becoming the course's eighth hole at the time.

### 2nd Hole – The Graves

---

#### Men's

YELLOW 317 Yards, Par 4

WHITE 348 Yards, Par 4

SI 15

#### Ladies

RED 332 Yards, par 4

SI 9



---

Beware of the two hidden bunkers on this hole. They are approximately, three quarters of the way down the fairway!

**History Trivia:** It has been suggested that this may have been a burial ground for soldiers who died at the Battle of Pinkie in 1547. They were buried on Musselburgh Links to discourage golfers from playing there, as golf was frowned upon at that time.

P7893	Page 12 of 31	Ethos Environmental Limited
Golf Risk Assessment		Health and Safety Risk Assessment
Musselburgh Racecourse		August 2019



### 3rd Hole – Barracks Entry

**Men's**

**YELLOW 298 Yards, Par 4**  
**WHITE 357 Yards, par 4**  
**SI 3**

**Ladies**

**RED 313 yards, par 4**  
**SI 11**



This is a tricky par 4. With heavy gorse bushing on the left and the racetrack on the right, it's important to get a clean drive. There are also a few bunkers down the fairway, just to catch you out!

**History Trivia:** This hole is called Barracks Entry due to it being opposite the road leading to the barracks in Pinkie Road.

### 4th Hole – Mrs Forman's

**Men's**

**YELLOW 412 Yards, par 4**  
**WHITE 431 Yards, par 4**  
**SI 1**

**Ladies**

**RED 322 Yards, Par 4**  
**SI 1**



With a difficult semi-blind tee shot, and an awkward approach Mrs Forman's is another hard par 4 to be aware of. The green is a great example of a traditional putting area, meaning there are often few straight putts.

**History Trivia:** This was a most popular resting point on the course and drinks used to be served to the golfers through a window adjacent to the green.

P7893	Page 13 of 31	Ethos Environmental Limited
Golf Risk Assessment		Health and Safety Risk Assessment
Musselburgh Racecourse		August 2019

## 5th Hole – The Sea Hole

### Men's

YELLOW 167 yards, par 3

WHITE 183 yards, par 3

SI 11

### Ladies

RED 177 Yards, par 3

SI 17



A lovely but tricky par 3, due to the numerous bunkers which protect the green.

**History Trivia:** This hole has been copied and incorporated in many courses (more than any other hole on the Links) with sleepers protecting the green.

## 6th Hole – The Table

### Men's

YELLOW 316 Yards, par 4

WHITE 326 Yards, par 4

SI 9

### Ladies

RED 321 Yards, par 4

SI 5



The 6th is a great hole, offering stunning views of Arthur's Seat. The recommended line of this hole is down the left side of the fairway, which will give you a straight shot onto the green.

**History Trivia:** The formidable "Pandy" (a euphemism for pandemonium bunker). Willie Park Junior used to enjoy playing this hole as he was a long hitter and could easily carry a "Pandy" bunker and he normally played his second to the foot of the table plateau green.

P7893	Page 14 of 31	Ethos Environmental Limited
Golf Risk Assessment		Health and Safety Risk Assessment
Musselburgh Racecourse		August 2019

## 7th Hole - The Bathing Coach

### Men's

YELLOW 457 Yards, par 5

WHITE 479 Yards, par 5

SI 13

### Ladies

RED 472 Yards, par 5

SI 3



This hole provides the best opportunity for a birdie. The wind can play a big factor in this hole, so be mindful of your approach and certainly try and avoid the bunkers. The green is very large and can make for having some awkward pin positions, so your putting technique can be put to the test.

**History Trivia:** This hole received its name because a bathing coach stood near to the green for many years.

## 8th Hole - Hole Across

### Men's

YELLOW 220 Yards, par 3

WHITE 240 Yards, par 3

SI 5

### Ladies

RED 229 Yards, par 4

SI 7



Another tricky par 3 to master. The hole is slightly uphill and tee shots are often going into a prevailing wind.

**History Trivia:** This hole was previously the ninth hole and was added in 1870 in preparation for the course holding the Open Championships.

P7893	Page 15 of 31	Ethos Environmental Limited
Golf Risk Assessment		Health and Safety Risk Assessment
Musselburgh Racecourse		August 2019

**9th Hole - The Gas**

---

<b>Men's</b>	
YELLOW	340 Yards, par 4
WHITE	364 Yards, par 4
SI	7
<b>Ladies</b>	
RED	357 Yards, par 4
SI	15

---



The 9th, called The Gas Hole is another bunker favourite with nine bunkers in total and long rough siding the fairway for good measure.

**History Trivia:** History Trivia: This hole was so called due to the gasworks being situated behind the green.

## Appendix 3: Average Shot Length

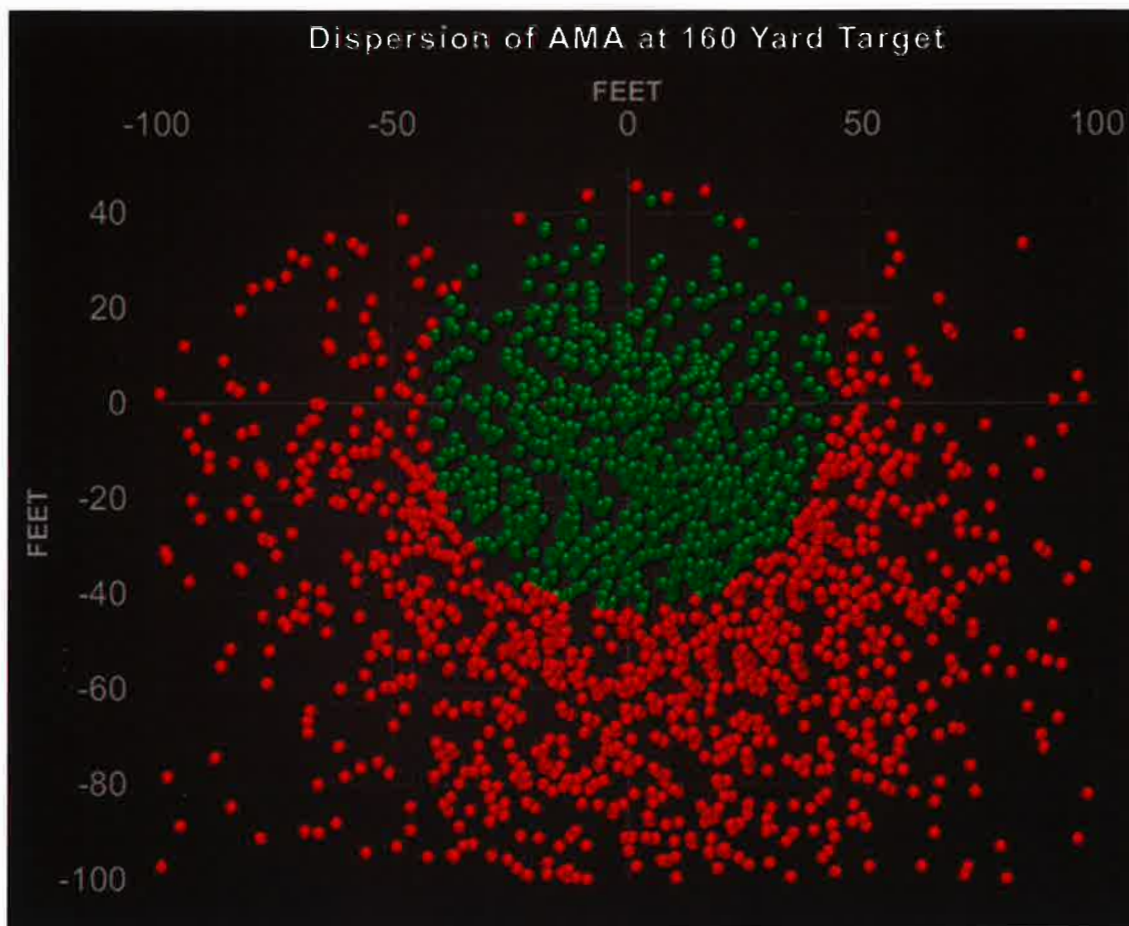
**Table A3.1: Average Shot Distances by Club for Men and Women**

Club	Men's Average Distance (yds)	Women's Average Distance (yds)	Men's Average Distance (m)	Women's Average Distance (m)
Driver	230	200	210	183
3-wood	210	180	192	165
2-iron	190	170	174	155
3-iron	180	160	165	146
4-iron	170	150	155	137
5-iron	160	140	146	128
6-iron	150	130	137	119
7-iron	140	120	128	110
8-iron	130	110	119	101
9-iron	120	100	110	91
Pitching wedge	110	90	101	82
Sand wedge	90	80	82	73
Lob wedge	65	6	59	5

**Table A3.2: Average Shot Distances for Short, Mid and Long Hitters**

Club	Loft (degrees)	Distance for men (metres)			Distance for women (metres)		
		Short	Mid	Long	Short	Mid	Long
Driver	8 - 13	183	210	229	119	147	183
2-wood	12 - 15	175	201	219	114	141	175
3-wood	12 - 17	172	197	214	111	138	172
4-wood	15 - 19	160	183	199	104	128	160
5-wood	19 - 21	156	178	194	101	125	156
6-wood	21 - 23	148	169	184	96	119	148
7-wood	23 - 25	140	160	174	91	112	140
8-wood	25 - 27	132	151	164	85	106	132
9-wood	26 - 28	120	137	150	78	96	120
1-iron	15 - 18	162	197	221	99	127	162
2-iron	18 - 20	147	178	200	90	116	147
3-iron	21 - 24	136	165	185	83	107	136
4-iron	25 - 28	128	155	175	78	101	128
5-iron	28 - 32	121	146	165	73	95	121
6-iron	32 - 36	113	137	154	69	89	113
7-iron	36 - 40	106	128	144	64	83	106
8-iron	40 - 44	98	119	134	60	77	98
9-iron	45 - 48	87	105	118	53	68	87
Pitching wedge	48 - 52	79	96	108	48	62	79
Gap wedge	52 - 54	72	87	98	44	56	72
Sand wedge	54 - 58	60	73	82	37	47	60
Lob wedge	58 - 62	53	64	72	32	42	53

Appendix 4: Average Shot Distribution<sup>2</sup>



<sup>2</sup> From [Blog.trackmangolf.com](http://Blog.trackmangolf.com)

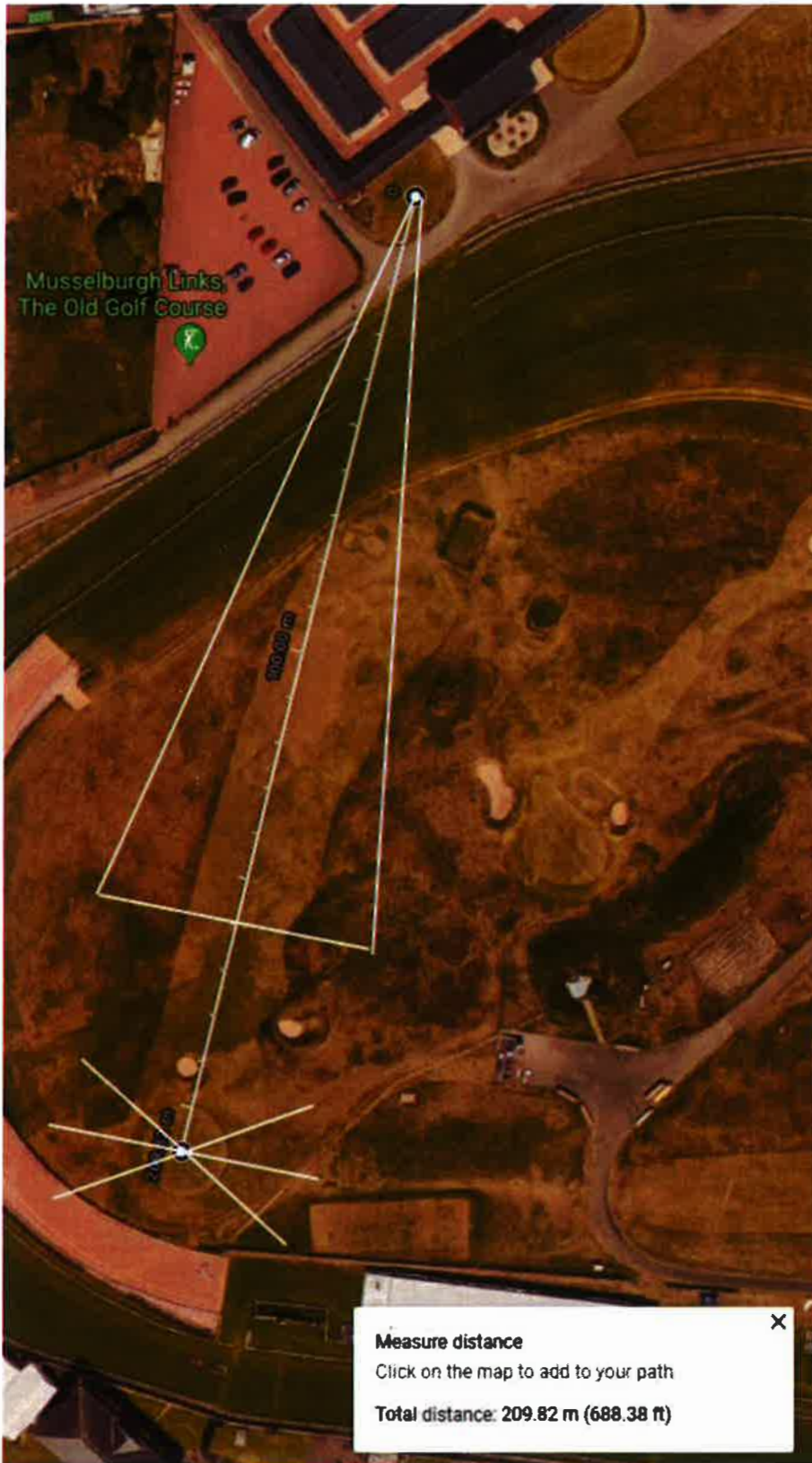
P7893	Page 19 of 31	Ethos Environmental Limited
Golf Risk Assessment		Health and Safety Risk Assessment
Musselburgh Racecourse		August 2019

## Appendix 5: Evaluation of Hole Shot Spread

---

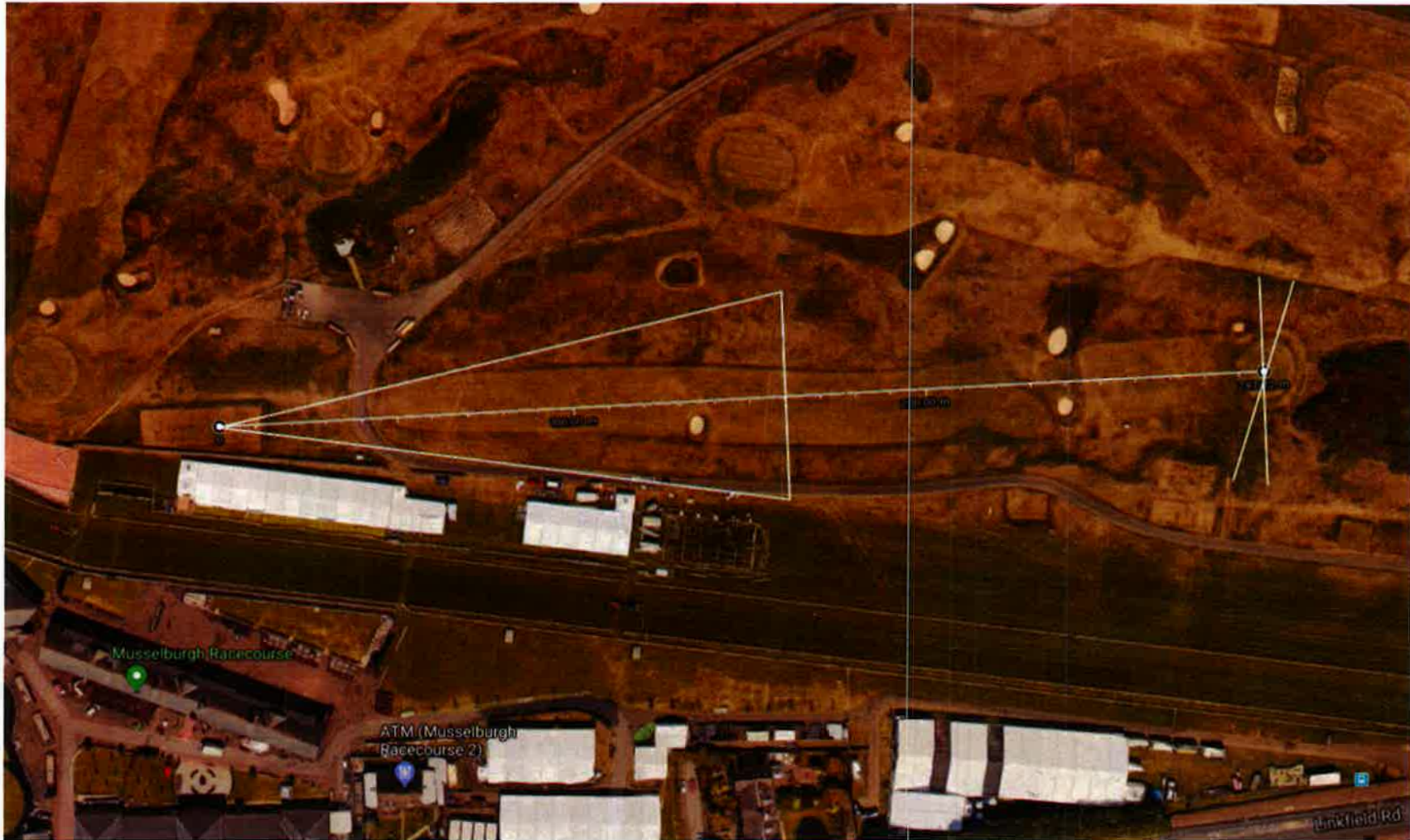
P7893	Page 20 of 31	Ethos Environmental Limited
Golf Risk Assessment		Health and Safety Risk Assessment
Musselburgh Racecourse		August 2019





Hole 1

P7893	Page 21 of 31	Ethos Environmental Limited
Golf Risk Assessment		Health and Safety Risk Assessment
Musselburgh Racecourse		August 2019



Hole 2

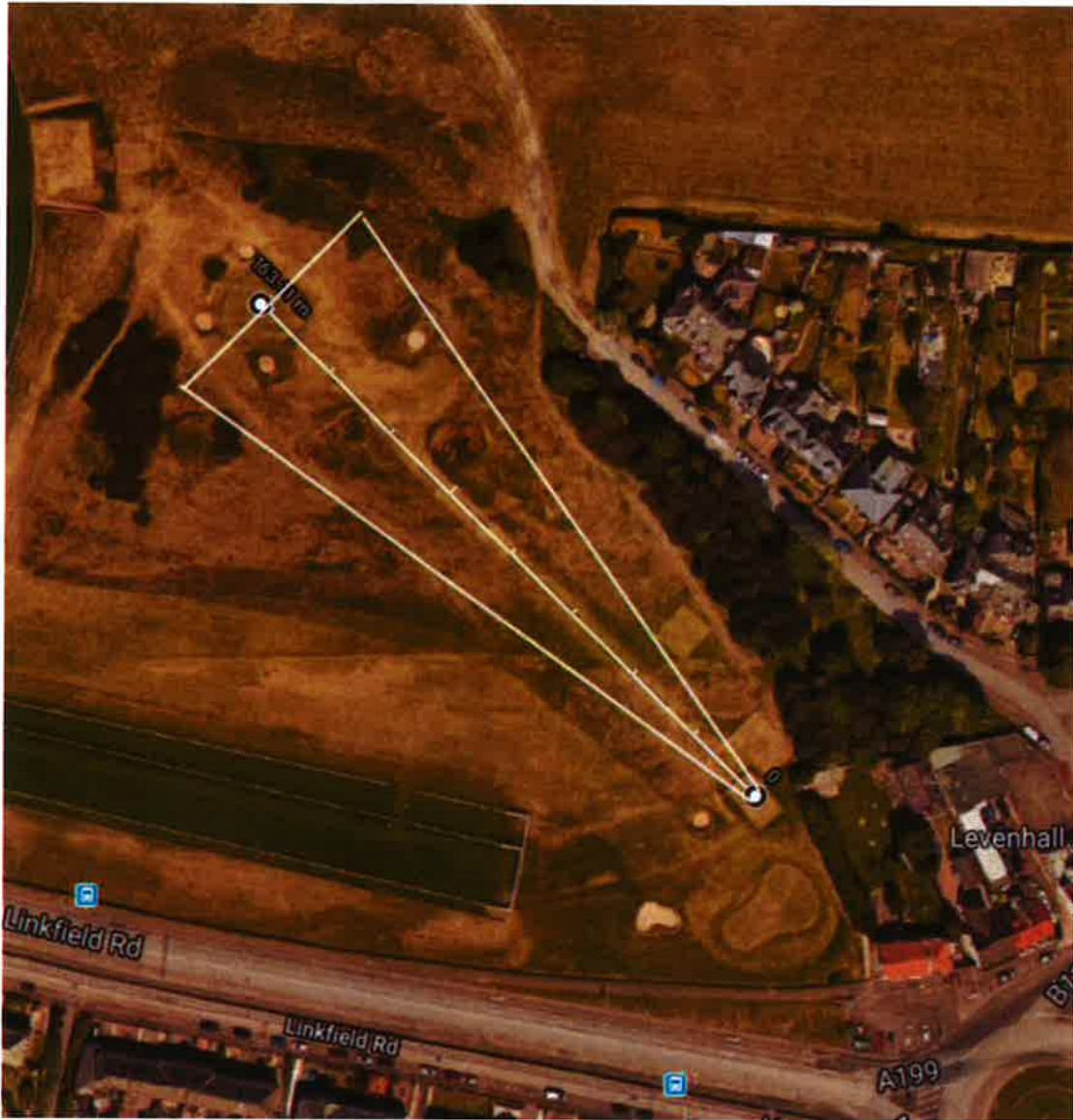
P7893	Page 22 of 31	Ethos Environmental Limited
Golf Risk Assessment		Health and Safety Risk Assessment
Musselburgh Racecourse		August 2019



Hole 3

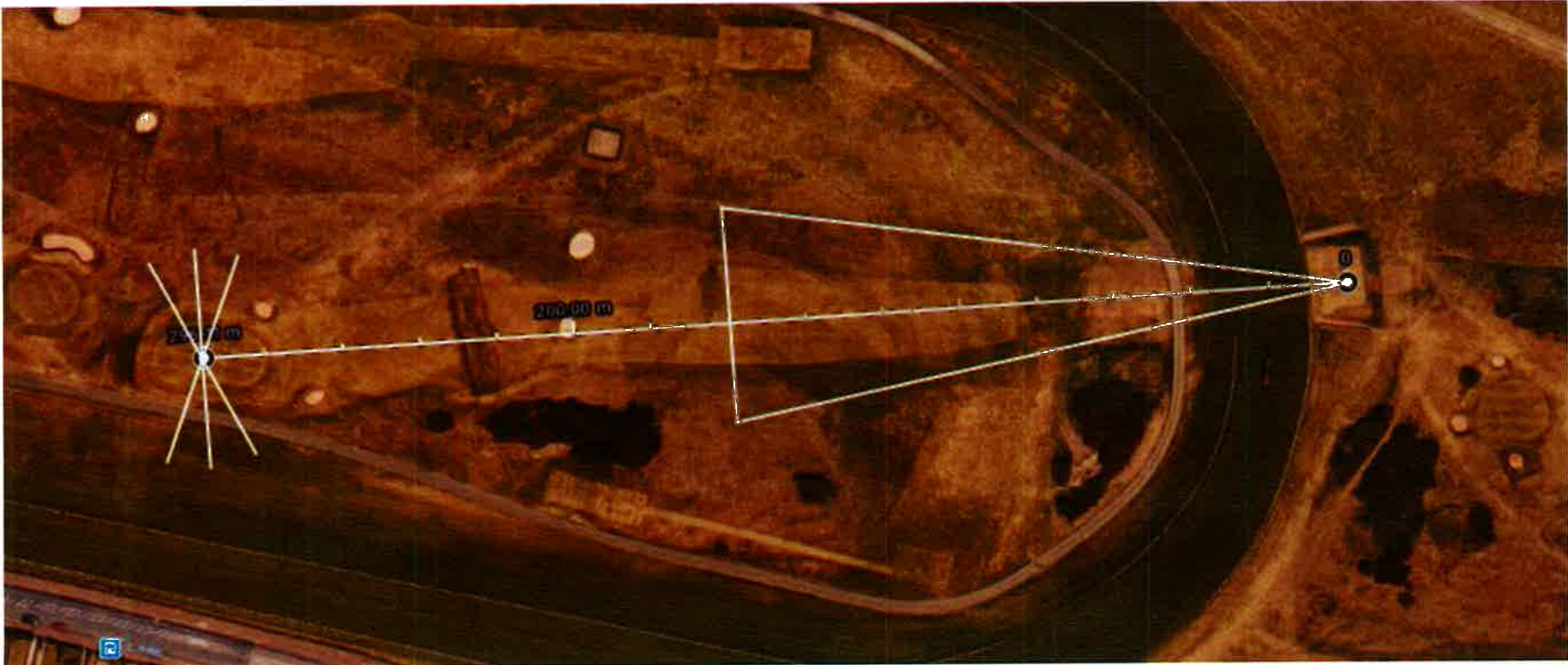
P7893	Page 23 of 31	Ethos Environmental Limited
Golf Risk Assessment		Health and Safety Risk Assessment
Musselburgh Racecourse		August 2019





Hole 5

P7893	Page 25 of 31	Ethos Environmental Limited
Golf Risk Assessment		Health and Safety Risk Assessment
Musselburgh Racecourse		August 2019



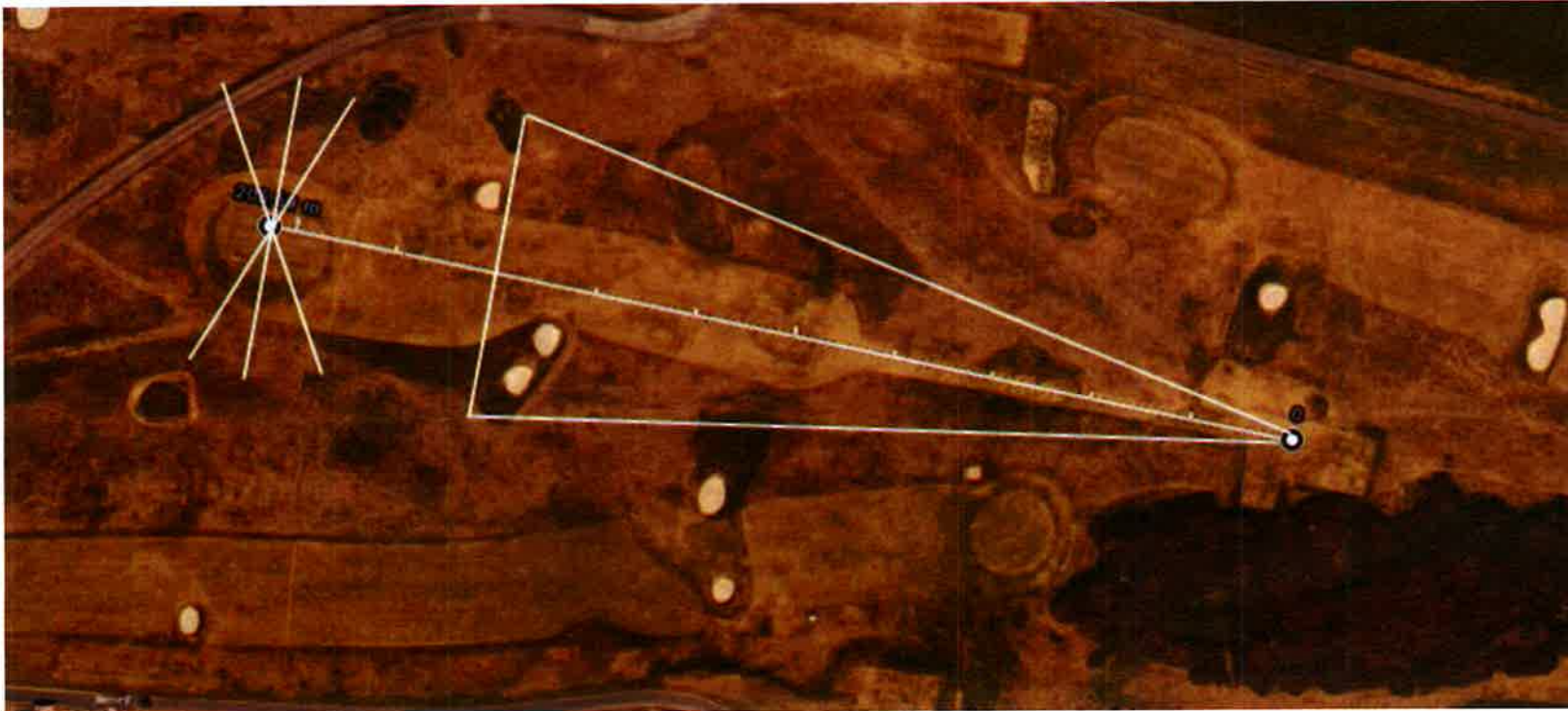
Hole 6

P7893	Page 26 of 31	Ethos Environmental Limited
Golf Risk Assessment		Health and Safety Risk Assessment
Musselburgh Racecourse		August 2019



Hole 7

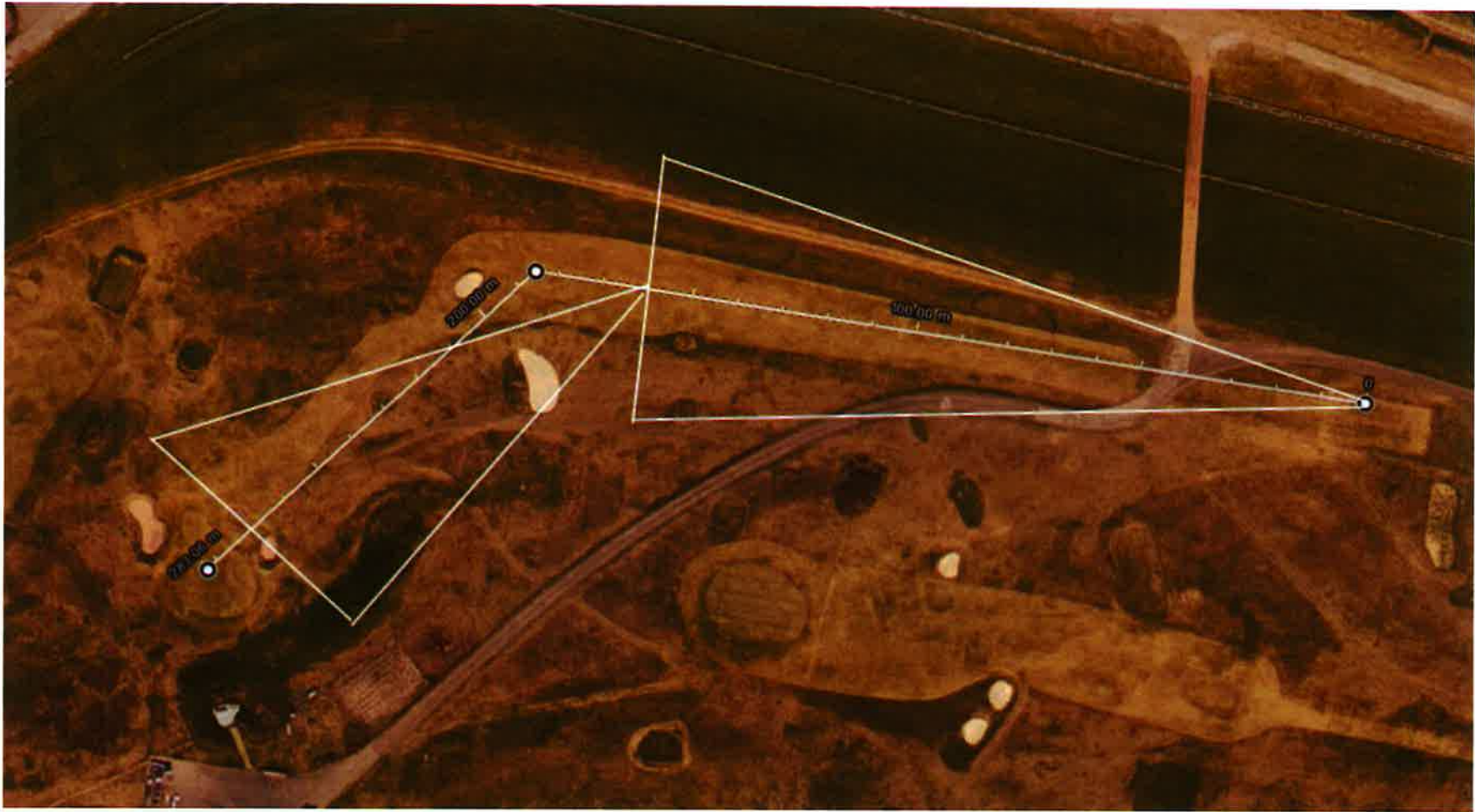
P7893	Page 27 of 31	Ethos Environmental Limited
Golf Risk Assessment		Health and Safety Risk Assessment
Musselburgh Racecourse		August 2019



Hole 8

P7893	Page 28 of 31	Ethos Environmental Limited
Golf Risk Assessment		Health and Safety Risk Assessment
Musselburgh Racecourse		August 2019





Hole 9

P7893	Page 29 of 31	Ethos Environmental Limited
Golf Risk Assessment		Health and Safety Risk Assessment
Musselburgh Racecourse		August 2019

Appendix 6: Elevated Risk of Offline Golf Balls



P7893	Page 30 of 31	Ethos Environmental Limited
Golf Risk Assessment		Health and Safety Risk Assessment
Musselburgh Racecourse		August 2019

## Appendix 7: Risk Assessment

---

P7893	Page 31 of 31	Ethos Environmental Limited
Golf Risk Assessment		Health and Safety Risk Assessment
Musselburgh Racecourse		August 2019



Organisation name: MUSSELBURGH RACECOURSE

**RISK ASSESSMENT REF NUMBER : 0132 – SCHOOL CHILDREN PHOTO SHOOT**

What/Where are the hazards?	Who might be harmed and how?	What are you already doing?	Do you need to do anything else to manage this risk?	Action by whom?	Action by when?	Completion Date
<p><i>The hazard:</i></p> <p><i>School children in close proximity to a pony for a photo shoot.</i></p> <p><i>The photo shoot will take place on the racecourse track and within the racecourse Parade Ring</i></p>	<p><i>Collison with the children and the pony</i></p> <p><i>Risk of injury</i></p> <p><b>RISK LEVEL : LOW</b></p>	<p><i>The school children will be accompanied at all times.</i></p> <p><i>The Supervisors will be:</i></p> <p><i>3 x Racecourse employees</i></p> <p><i>Qualified Nursery Supervisors</i></p> <p><i>The pony will be under control at all times and led by an experienced / competent person.</i></p> <p><i>The children will be kept within a safe distance from the pony at all tims.</i></p>	<p><i>Continued supervision throughout the event by experienced persons form the racecourse and continuous supervision by the Nursery Supervisors of the children</i></p>	<p><i>Nursery Supervisors</i></p> <p><i>Musselburgh Racecourse Managers</i></p>	<p><i>26/02/18</i></p>	<p><i>To be used for further photo shoots</i></p>



Organisation name: MUSSELBURGH RACECOURSE

RISK ASSESSMENT REF NUMBER : 0133

What/Where are the hazards?	Who might be harmed and how?	Control Measures Required	Do you need to do anything else to manage this risk?	Action by whom?	Action by when?	Completion Date
<p>School children and teachers/supervisors visiting Musselburgh Racecourse for various activities</p> <p>All areas throughout the racecourse site</p> <p>Preparations maybe taking place for the staging of the racecourse racedays</p>	<p>School children / teachers / supervisors</p> <p>Collision with vehicles</p> <p>Collison with golf playing within the centre part of the racecourse</p> <p><b>RISK LEVEL – LOW/MEDIUM</b></p>	<p>Teachers / supervisors of school children visiting to be briefed of the possibility of vehicle movement throughout the racecourse site</p> <p>Teachers / supervisors of school children visiting of the golf activity within the centre part of the racecourse</p> <p>Groups of children to be under supervision at all times</p> <p>Teachers / supervisors of school children visiting to be instructed to remain within the confines of the racecourse and not to enter the golf course at any time</p> <p>Signage in place to warn of vehicle movement throughout the racecourse</p> <p>Musselburgh racecourse to inform the golf course management of times and activities of school children groups on site and to receive recognition of the visit notification</p> <p>Teachers / Supervisors of school children to sign to state they have received risk assessment and have been briefed on the above points</p> <p>When the children group are being taken onto the racecourse track the teachers will be responsible for monitoring the golfing activity at that time. if it is deemed appropriate, the teachers will keep the children off the racecourse track until it is clear to proceed or liaise with the golfers in that vicinity to stop playing until the children s exercise is complete and clear.</p>	<p>Monitor all groups whilst on site to ensure the group are adhering to control measures stated.</p> <p>All relevant parties are committed to ensuring that the children s activities are conducted in the safest environment within all reasonable means.</p> <p>Ladies Day/Premier Days racing preparation to be briefed each day to the school children Supervisor in order for the children not to be in he vicinity of any works being carried out.</p> <p>On site Contractors to be briefed of the children being on site on arrival and a copy of their itinerary received.</p>	<p>Racecourse management</p> <p>School children teachers / supervisors</p> <p>Ops Manager</p> <p>Golf course management</p>	<p>21/05/18</p> <p>Reviewed at Quarterly Health and Safety Meetings</p> <p>Updated : 04/12/19</p>	<p>Reviewed bt Independent Health and Safety Consultant</p> <p>Report received December 2019 to state control measures will be place</p> <p>Racecourse Risk assessments to be used in conjunction of the stated report</p>

What/Where are the hazards?	Who might be harmed and how?	Control Measures Required	Do you need to do anything else to manage this risk?	Action by whom?	Action by when?	Completion Date
		<p><i>There will be a minimum of 2 teachers at all times with the group who will be radio communication with each other with one of the teacher located on the 2<sup>nd</sup> tee.in order to communicate with oncoming golfers.</i></p> <p><i>The teachers will be wearing high viz to identify them as supervisors of the children.</i></p> <p><i>There will be an exclusion zones noominated around specific hole that will be briefed to the School teachers before the event.</i></p> <p><i>Golfers will be warned as to the proximity of school children .</i></p> <p><i>Racecourse staff member to be in radio contact with the Scholl teachers to manage the transit of the school children at all times</i></p>				



**REPORT TO:** The Musselburgh Racing Associated Committee  
**MEETING DATE:** 7 January 2020  
**BY:** Senior Operations and Commercial Manager  
**SUBJECT:** Operations and Commercial Report

---

**3**

**1 PURPOSE**

- 1.1 To update the Committee on the commercial and operational performance of the Racecourse for 2019/20

**2 RECOMMENDATIONS**

- 2.1 The Committee are asked to note the report.

**3 BACKGROUND**

**Highlights**

**Awards**

- 3.1 Musselburgh Racecourse was shortlisted in four categories in the recent Racecourse Association Showcase Awards. The categories were for best Marketing Campaign (Easter Saturday), Best Event (New Years Day), Best Owners Experience and best innovative idea (Yurts on NYD).
- 3.2 The Racecourse was successful in winning The Best Owners Experience, beating tough competition from Ayr, Bangor, Haydock and Newbury Racecourse. The racecourse also collected Customer Experience accolades for Lovely Loos and Best Café/casual dining experience, which recognised the quality of our Harris Tweed Bistro.
- 3.3 Heritage Portfolio has also had success at the National Racecourse Catering Awards, collecting four awards including Best Fine Dining Experience and Lifetime achievement award for Doreen Hedley, who runs and hosts The Harris Tweed Bistro.

**Sunday 29 September – The Honest Toun Family Raceday**

- 3.4 Renamed The Honest Toun Family Day (previously Supporting your Services Raceday) this day was aimed at our local community, with entertainments and activities designed to be relevant for all ages. To welcome as many local racegoers as possible we worked in partnership with sponsors Virgin Media to distribute over 500 free tickets, to community groups, local residents, charities that we have supported throughout the year and local schools. Attendance for

this day grew by over 500 people (total 3023) with the budgeted income exceeded by £5,000.

### **New Years Day**

3.5 A verbal update on New Years Day will be provided at the meeting.

### **Easter Saturday 2020**

3.6 Betway has confirmed that they wish to sponsor Easter Saturday in addition to their New Year's Day commitment. A fee of [REDACTED] has been agreed. With very little interest from other bookmakers or businesses outside of Racing we are pleased to have secured this deal. Discussions are currently taking place to finalise the contract.

## **4 POLICY IMPLICATIONS**

4.1 None.

## **5 INTEGRATED IMPACT ASSESSMENT**

5.1 The subject of this report does not affect the wellbeing of the community or have a significant impact on equality, the environment or economy.

## **6 RESOURCE IMPLICATIONS**

6.1 None.

## **7 BACKGROUND PAPERS**

7.1 None.

<b>AUTHOR'S NAME</b>	Sarah Montgomery
<b>DESIGNATION</b>	Senior Operations and Commercial Manager
<b>CONTACT INFO</b>	07796314733
<b>DATE</b>	5 December 2019

**REPORT TO:** The Musselburgh Racing Associated Committee  
**MEETING DATE:** 7 January 2020  
**BY:** General Manager  
**SUBJECT:** General Manager's Report

---

**4**

**1 PURPOSE**

- 1.1 To provide the MRAC with an update on the general management of the Racecourse and any matters requiring the attention of the MRAC

**2 RECOMMENDATIONS**

- 2.1 The MRAC is asked to note the outcome of the 2015 Rates Appeal process
- 2.2 The MRAC to consider the quotes for re-surfacing the grandstand area and the racecourse access road
- 2.3 The MRAC to consider if it wishes to give notice to Heritage Portfolio Ltd (HPL) and Heineken UK Ltd (HUK) by 31<sup>st</sup> December if it wishes to end these existing supplier arrangements on 31<sup>st</sup> March 2020.
- 2.4 The MRAC acknowledge the complaints received about the Stables café and support the transfer of the Stables Café to the new operator
- 2.5 The MRAC is asked to note that the employment tribunal to hear the claim [REDACTED] has been postponed to March 2020. ET Scotland have been asked to allocate 5 days for the hearing.

**3 BACKGROUND**

- 3.1 Rates Appeal – Colliers did an excellent job in negotiating a reduced rateable value for the period 2017 to 2022 from £155k to £135k. The new RV appears to be accurate and correlates with Savills independent rent valuation, [REDACTED]  
[REDACTED] Please see the savings, which are detailed in the background paper 7.1
- 3.2 Re-surfacing - The tarmac around the grandstand has deteriorated significantly in the past 9 months. We have surveyed the area and have issued an initiation to tender. We have asked for quotes by 7 January 2020. It is recommended that the MRAC carry out the necessary repairs so that the new operator takes over the Racecourse in a satisfactory and safe condition.

The racecourse access road is deteriorating and the cost of maintenance is increasing. It is recommended that the MRAC tarmac the remainder of the access road.

- 3.3 HPL and HUK – each contract requires a three-month notice period to end on 31<sup>st</sup> March 2020. If notice is not given, the HPL contract will continue to 31<sup>st</sup> March 2023 and HUK to 2022.
- 3.4 We continue to receive negative feedback about the level of service Stable Staff are receiving in the Stables Café, especially now that the weather is wetter and cold and the days are shorter. The GM has raised the matter with the Chair. The Racecourse Executive believe that the new operator is best placed to operate the Stables Café on Racedays and would like the MRAC to support this position.

#### **4 POLICY IMPLICATIONS**

- 4.1 None.

#### **5 INTEGRATED IMPACT ASSESSMENT**

- 5.1 The subject of this report does not affect the wellbeing of the community or have a significant impact on equality, the environment or economy.

#### **6 RESOURCE IMPLICATIONS**

- 6.1 Financial – the financial implications of the repairs to the grandstand surface [REDACTED].
- 6.2 Personnel - see above.
- 6.3 Other – none.

#### **7 BACKGROUND PAPERS**

- 7.1 Appendix 1: Musselburgh Racecourse Project Savings – 2017 Reval

<b>AUTHOR'S NAME</b>	Bill Farnsworth
<b>DESIGNATION</b>	General Manager
<b>CONTACT INFO</b>	Tel 07710 536 134
<b>DATE</b>	Wednesday, 18 December 2019

## Business Rates Liability and Savings 2017 Roll

*Scottish Racing Marketing Ltd*

*Musselburgh Racecourse, 3 Millhill, Musselburgh, East Lothian, EH21 7RG*

Rate Period	Original Liability at RV 155,000	Revised Liability at RV 135,000 wef 01-04-17	Saving
01-04-17 to 31-03-18	76,260.00	66,420.00	9,840.00
01-04-18 to 31-03-19	78,430.00	68,310.00	10,120.00
01-04-19 to 31-03-20	79,980.00	69,660.00	10,320.00
01-04-20 to 31-03-21 e	82,305.00	71,685.00	10,620.00
01-04-21 to 31-03-22 e	84,630.00	73,710.00	10,920.00
TOTAL SAVING up to 31/03/22 <i>'e' indicates that liability is estimated</i>			51,820.00

Prepared by

**Colliers International**



**REPORT TO:** The Musselburgh Racing Associated Committee  
**MEETING DATE:** 7 January 2020  
**BY:** General Manager & Financial Manager  
**SUBJECT:** Finance Report

---

**5**

## **1 PURPOSE**

- 1.1 To update the Committee on the profit/loss forecast for the full year from 1<sup>st</sup> April 2019 to 31<sup>st</sup> March 2020.

## **2 RECOMMENDATIONS**

- 2.1 The Committee are asked to note and approve the financial performance to date for the full year from 1<sup>st</sup> April 2019 to 31<sup>st</sup> March 2020. Please refer to background papers 7.1 and 7.2.

## **3 BACKGROUND**

### **3.1 Profit/Loss Financial Year 2019/20**

- 28 fixtures budgeted in 2019-20 compared to 27 fixtures staged in the previous year.
- 27 fixtures forecast due to the loss of a jump fixture in February 2020 following the BHA fixture allocation process, which was completed in July 2019.
- Extra Fixtures – one
- Abandonments – one
- Forecast Profit/Loss is a Profit of £120,438, which is up by £47,841 on budget (and up £73,491 on the previous year)
- Forecast Expenditure (after grants and disposals) on Essential Maintenance and Capex Development Programmes is £10,034, which is on the budget
- Forecast Expenditure on non-recurring, unbudgeted exceptional costs (Legal Fees etc.) is £43,274
- The net cash inflow/outflow for the year is a £65,130
- Loans (Levy Board) received in the year will be £0k
- Loans repaid in the year will be £0k
- Opening balance sheet position on 1<sup>st</sup> April 2019 was a deficit of £149,600

- Closing balance sheet position before Expenditure on Exceptional Costs on 31<sup>st</sup> March 2020 is forecast to be a deficit of £39,196
- Closing balance sheet position on 31<sup>st</sup> March 2020 after additional expenditure on exceptional costs associated with the tender process and legal fees is forecast to be a deficit of £45,274
- Closing balance sheet position on 31<sup>st</sup> March 2020 after the sale of assets including equipment, machinery, fixtures and fittings is forecast to be £65,530

## **Commentary**

### **Media Rights**

- 3.2 We originally budgeted a reduction of £192k in media rights income. On the advice of RMG, this was reduced by £100k to £92k because betting shops were closing at a slower rate than was forecast. Unfortunately, betting shop closures accelerated in September and RMG re-instated their original forecast. Fortunately, Musselburgh is performing well on runners and betting TO so we forecast the reduction to be closer to £100k for the year as opposed to the original forecast of £192k

### **Operating Profit**

- 3.3 At an operating level, the Racecourse has performed very well in 2019-20 with admission revenue forecast to be up by £97,926. Raceday profit, despite abandoning a profitable fixture is forecast to be up by £86,068

## **4 POLICY IMPLICATIONS**

- 4.1 None.

## **5 INTEGRATED IMPACT ASSESSMENT**

- 5.1 The subject of this report does not affect the wellbeing of the community or have a significant impact on equality, the environment or community.

## **6 RESOURCE IMPLICATIONS**

- 6.1 Financial – none.  
6.2 Personnel – none.  
6.3 Other – none.

## **7 BACKGROUND PAPERS**

- 7.1 Appendix 1: 2019-20 MRC Annual Management Accounts  
7.2 Appendix 2: Financial summary 2019-20



<b>AUTHOR'S NAME</b>	Bill Farnsworth
<b>DESIGNATION</b>	General Manager
<b>CONTACT INFO</b>	0131 6652859 / 07710 536 134
<b>DATE</b>	Wednesday, 18 December 2019



**MUSSELBURGH RACING ASSOCIATED COMMITTEE  
2019-20 MRC ANNUAL MANAGEMENT ACCOUNTS**

Actual	Budget	Forecast	Variance on	Variance on	Variance on
26 Race Days	28 Race Days	28 Race Days	Budget	Previous Year	Budget
£	£	£	£	£	%
4 extra 5 abandoned					
2018/19	2019/20	2019/20			
£	£	£			
<b>Race Day Income :-</b>					
798,351	790,250	888,176	97,926	89,825	12%
37,459	40,715	36,830	-3,885	-829	-10%
47,380	48,000	38,880	-9,120	-8,500	-19%
82,111	84,830	79,349	-5,481	-2,762	-6%
2,190,696	1,909,440	2,107,159	197,719	-83,537	10%
692,059	729,884	705,033	-24,851	12,974	-3%
3,682	0	0	0	-3,682	#DIV/0!
16,423	11,990	18,256	6,266	1,833	52%
99,901	101,404	107,458	6,054	7,557	6%
453,941	407,163	431,452	24,289	-22,489	6%
247,197	258,796	223,123	-35,673	-24,074	-14%
0	0	0	0	0	#DIV/0!
90,000	79,000	73,000	-6,000	-17,000	-8%
335,022	359,492	337,281	-22,211	2,259	-6%
0	0	0	0	0	#DIV/0!
25,000	35,000	25,000	-10,000	0	-29%
<b>5,119,222</b>	<b>4,855,984</b>	<b>5,070,997</b>	<b>215,033</b>	<b>-48,225</b>	<b>4%</b>
<b>Race Day Expenditure:-</b>					
33,413	36,620	37,375	755	3,962	2%
50,331	50,000	57,848	7,848	7,517	16%
103,866	104,750	108,473	3,723	4,607	4%
169,369	134,100	145,382	11,282	-23,987	8%
96,966	114,000	104,488	-9,512	7,522	-8%
72,483	80,054	75,844	-4,210	3,361	-5%
261,859	234,861	250,496	15,635	-11,363	7%
39,329	36,400	36,769	369	-2,560	1%
28,286	44,400	32,066	-12,334	3,780	-28%
153,155	132,695	141,044	8,349	-12,111	6%
116,180	104,200	135,525	31,325	19,345	30%
62,975	68,000	72,250	4,250	9,275	6%
35,129	38,800	36,862	-1,938	1,733	-5%
120,046	124,700	121,446	-3,254	1,400	-3%
131,898	127,320	125,390	-1,930	-6,508	-2%
0	0	0	0	0	#DIV/0!
295,531	315,620	295,977	-19,643	446	-6%
119,526	119,266	111,336	-7,930	-8,190	-7%
121,500	64,500	49,500	-15,000	-72,000	-23%
478,353	385,379	451,189	65,810	-27,164	17%
<b>2,490,195</b>	<b>2,315,665</b>	<b>2,389,260</b>	<b>73,595</b>	<b>-100,935</b>	<b>3%</b>
<b>2,629,027</b>	<b>Total Profit Race Days (before Prize Money)</b>	<b>2,540,299</b>	<b>141,438</b>	<b>52,710</b>	<b>6%</b>
<b>Prize Money Income</b>					
468,216	544,916	530,437	-14,479	62,221	-3%
0	0	0	0	0	#DIV/0!
0	5,000	5,000	0	5,000	0%
134,820	302,464	257,234	-45,230	122,414	-15%
122,786	131,184	145,959	14,775	23,173	11%
725,822	983,664	938,630	-44,934	212,808	-5%
<b>1,720,757</b>	<b>Total Prize Money Expenditure</b>	<b>1,951,061</b>	<b>10,436</b>	<b>240,740</b>	<b>1%</b>
<b>994,935</b>	<b>Total Cost Prize Money to MRC</b>	<b>967,497</b>	<b>55,370</b>	<b>27,932</b>	<b>6%</b>
<b>1,634,092</b>	<b>Total Profit Race Days (after PM) (pages 3 &amp; 4)</b>	<b>1,572,802</b>	<b>86,068</b>	<b>24,778</b>	<b>5%</b>
<b>Add:-</b>					
<b>240,653</b>	<b>Total Fixed Income (page 2)</b>	<b>157,595</b>	<b>18,231</b>	<b>-64,827</b>	<b>12%</b>
<b>Deduct:-</b>					
<b>1,827,798</b>	<b>Total Fixed Expenditure (page 2)</b>	<b>1,657,800</b>	<b>56,458</b>	<b>-113,540</b>	<b>3%</b>
<b>46,947</b>	<b>Total Annual Profit/Loss</b>	<b>72,597</b>	<b>47,841</b>	<b>73,491</b>	<b>66%</b>
<b>31,558</b>	<b>Essential Capex &amp; maintenance</b>	<b>10,000</b>	<b>34</b>	<b>-21,524</b>	<b>0%</b>
<b>15,389</b>	<b>Surplus/Deficit (Retained Profit)</b>	<b>62,597</b>	<b>47,807</b>	<b>95,015</b>	<b>76%</b>
<b>352,306</b>	<b>Exceptional Costs - Legal Fees, ELC Fees etc</b>	<b>0</b>			
<b>-336,917</b>	<b>Surplus/Deficit (Retained Profit) after Exceptional Costs</b>	<b>62,597</b>	<b>2,533</b>	<b>402,047</b>	<b>4%</b>

**MUSSELBURGH RACING ASSOCIATED COMMITTEE  
2019-20 MRC ANNUAL MANAGEMENT ACCOUNTS**

2018/19		Budget	Actual	Forecast
	<b>FIXED EXPENDITURE</b>	2019/20	To Date	2019/20
£		£	£	£
140,000	<b>Establishment Costs</b>			
99,492	Rent	140,000	69,500	140,000
30,706	Water, Trade Refuse & non-domestic Rates	125,000	101,203	115,000
111,941	Insurance	33,000	34,376	35,000
245,981	Essential Maintenance of Stables & Buildings	90,000	83,229	100,000
	Maintenance Track and Grounds	148,500	97,702	148,500
<b>628,120</b>	<b>Total Establishment Costs</b>	<b>536,500</b>	<b>386,010</b>	<b>538,500</b>
	<b>Management Costs</b>			
491,418	Salaries, N.I. Etc	510,000	300,209	510,000
254,285	Caretaker/Groundsmen	256,500	162,273	256,500
7,674	Fees and Expenses	7,000	6,685	10,000
12,358	Training & Development	5,000	16,114	22,000
<b>765,735</b>	<b>Total Management Costs</b>	<b>778,500</b>	<b>485,281</b>	<b>798,500</b>
	<b>Operating Costs</b>			
18,000	Professional Fees	10,000	3,050	10,000
19,894	Business Services Fees	20,000	12,430	27,000
87,607	Marketing, Advertising and Promotions	65,000	46,212	76,000
8,078	Community Engagement	6,000	3,038	6,000
5,005	Subscriptions and Donations	5,000	3,717	5,000
23,006	Contributions to RCA	23,800	17,878	23,800
103,676	Heat and Light	82,000	30,500	82,000
23,980	Telephone	22,000	15,853	24,000
21,852	Printing, Postages, Stationery	22,000	13,777	22,000
32,332	Furniture, Fittings & Equipment	20,000	15,474	30,000
13,914	Credit Card /Bank Charges	12,000	11,713	15,000
9,873	Interest	12,000	-	12,000
3,679	Annual Members Expenditure (badges, trips)	3,000	2,594	3,000
9,319	Hospitality & Racecourse Visits	5,000	3,748	5,000
50,938	Harness Racing	30,000	31,458	31,458
2,790	Events (Catering etc)	5,000	1,043	5,000
<b>433,943</b>	<b>Total Operating Costs</b>	<b>342,800</b>	<b>212,485</b>	<b>377,258</b>
<b>1,827,798</b>	<b>Total Fixed Expenditure</b>	<b>1,657,800</b>	<b>697,766</b>	<b>1,714,258</b>
	<b>FIXED INCOME</b>			
40,565	Advertising	33,240	4,206	34,206
-	RMG Media Rights License Fee (moved to raceday income)	-	-	-
6,255	Betting Shop/Totepool/Britbel	32,355	32,355	32,355
65,795	TurfTV Dividend	-	-	-
36,004	Brewers Supply Discount	40,000	21,831	40,000
12,974	Events Income	10,000	1,199	10,000
8,761	Previous Years Adjustment	2,000	-	22,000
19,533	Miscellaneous (e.g. hire outs, bookies commissions)	8,000	350	8,000
50,766	Harness Racing	32,000	29,265	29,265
<b>240,653</b>	<b>Total Fixed Income</b>	<b>157,595</b>	<b>89,206</b>	<b>175,826</b>

Variance on	Variance on	Variance on
Budget	Previous Year	Budget
£	£	%
0	0	0%
-10,000	15,508	-8%
2,000	4,294	6%
10,000	-11,941	11%
0	-97,481	0%
0	0	#DIV/0!
0	18,582	0%
0	2,215	0%
3,000	2,326	43%
17,000	9,642	340%
20,000	32,765	3%
0	-8,000	0%
7,000	7,106	35%
11,000	-11,607	17%
0	-2,078	0%
0	-5	0%
0	794	0%
0	-21,676	0%
2,000	20	9%
0	148	0%
10,000	-2,332	50%
3,000	1,086	25%
0	2,127	0%
0	-679	0%
0	-4,319	0%
1,458	-19,480	5%
0	2,210	0%
34,458	-56,685	10%
56,458	-113,540	3%
966	-6,359	3%
0	0	#DIV/0!
0	26,100	0%
0	-65,795	#DIV/0!
0	3,996	0%
0	-2,974	0%
20,000	13,239	1000%
0	-11,533	0%
-2,735	-21,501	-9%
18,231	-64,827	12%

MUSSELBURGH RACING 2019-20 FLAT

	1		2		3		4		5		6		7		8			
2019 DATES	Budget	Forecast	Budget	Forecast	Budget	Forecast	Budget	Forecast	Budget	Forecast	Budget	Forecast	Budget	Forecast	Budget	Forecast		
2018 DATES (COMPARABLE)	Total	Total	02-Apr	02-Apr	20-Apr	20-Apr	02-May	02-May	03-May	03-May	13-May	13-May	01-Jun	01-Jun	03-Jul	03-Jul		
Raceday Income	£	£	£	£	£	£	£	£	£	£	£	£	£	£	£	£		
Admissions	603,150	701,231	8,000	6,684	60,000	74,681	5,000	6,353	15,450	13,878	7,700	6,557	330,000	370,983	10,300	13,613	19,400	23,661
Racecards	27,795	25,051	750	599	1,750	2,934	825	536	1,870	1,200	850	431	8,000	5,758	1,500	1,054	1,650	1,687
Annual Members subscription fees	28,800	23,040	1,800	1,440	1,800	1,440	1,800	1,440	1,800	1,440	1,800	1,440	1,800	1,440	1,800	1,440	1,800	1,440
Bookmakers' badges	53,990	52,159	2,000	1,678	5,000	7,600	2,100	1,535	3,000	2,470	2,000	1,678	12,000	10,440	2,300	1,912	2,040	2,836
SIS LBO License Fee Per Race	1,102,904	1,347,563	73,369	81,319	90,769	109,322	59,169	74,479	76,569	70,759	66,169	78,295	83,969	82,774	58,369	77,459	58,969	82,347
RMG Media Rights License Fee	386,408	404,491	21,467	21,467	42,935	42,935	21,467	21,467	21,467	21,467	21,467	21,467	42,935	42,935	21,467	21,467	21,467	21,467
Totepool Commission	-	-	0	0	0	0	0	0	0	0	0	0	0	0	0	0	0	0
Betting Shop Commission	6,520	13,446	400	599	850	1,282	130	575	550	926	200	430	700	1,800	200	720	450	620
Catering Commission	76,150	85,073	1,260	1,171	7,000	10,659	2,100	1,398	2,780	2,745	670	956	30,500	32,419	1,900	2,018	3,800	2,488
Corporate Hospitality	316,333	344,373	8,160	1,594	22,000	25,100	13,500	2,693	25,000	37,741	7,000	3,649	110,000	109,607	10,000	10,189	7,500	4,209
Sponsors Contribution	168,356	152,463	0	1,000	20,000	0	3,180	5,180	32,200	31,040	2,000	0	38,000	43,000	5,500	5,960	7,578	0
HBLB Appearance Money	-	-	0	0	0	0	0	0	0	0	0	0	0	0	0	0	0	0
HBLB Fixture Incentive Scheme	15,000	15,000	15,000	15,000	0	0	0	0	0	0	0	0	0	0	0	0	0	0
HBLB Integrity Grant (fieldforce/cameras/photo)	205,424	200,068	12,839	12,838	12,839	12,838	12,839	12,838	12,839	12,838	12,839	12,838	12,839	12,838	12,839	12,304	12,839	12,304
Share of sale/claims	-	-	0	0	0	0	0	0	0	0	0	0	0	0	0	0	0	0
Contribution for fixture transfers	20,000	20,000	10,000	10,000	0	0	0	0	0	0	10,000	10,000	0	0	0	0	0	0
<b>Total Raceday Income</b>	<b>3,010,830</b>	<b>3,383,958</b>	<b>155,045</b>	<b>155,389</b>	<b>264,943</b>	<b>288,791</b>	<b>122,110</b>	<b>128,494</b>	<b>193,525</b>	<b>196,504</b>	<b>132,695</b>	<b>137,741</b>	<b>670,743</b>	<b>713,994</b>	<b>126,175</b>	<b>148,136</b>	<b>137,493</b>	<b>153,059</b>
<b>Raceday Expenditure</b>																		
Officials (including refreshments)	18,920	22,075	1,000	1,157	1,100	400	1,400	1,558	1,200	997	1,000	997	1,600	3,237	1,100	1,959	1,400	1,037
Owners & Trainers (catering etc)	28,700	34,452	1,900	1,720	1,700	1,847	1,700	1,892	1,700	1,797	1,700	2,302	2,700	1,393	1,700	2,210	1,700	2,948
Raceday Staff	63,550	72,473	3,000	2,939	5,000	6,831	2,850	2,829	3,000	2,971	3,400	2,998	13,800	16,094	3,400	3,218	3,300	3,916
Maintenance Track and Grounds	69,000	82,182	5,000	5,700	5,500	5,012	3,000	2,561	3,000	2,560	2,000	3,927	12,000	11,127	2,000	1,560	3,000	3,087
Stables & Accommodation	65,100	61,488	4,400	2,310	5,800	5,024	3,400	3,097	3,400	3,065	4,000	2,612	5,800	5,189	4,300	3,721	3,000	4,289
Racecards	46,929	45,384	2,600	2,460	4,000	3,041	2,435	2,460	2,581	2,605	2,580	2,460	5,910	4,339	2,580	2,460	2,435	2,751
Corp Hosp (Catering/Marquees etc)	191,967	208,473	2,971	1,230	10,000	11,252	8,271	936	14,000	16,126	3,215	915	87,727	100,419	4,000	6,642	3,710	2,401
Sponsorship (Banners/ BTO )	20,800	23,469	1,300	992	1,300	1,755	1,300	925	1,300	1,841	1,300	1,153	1,300	882	1,300	1,377	1,300	1,198
Marketing	37,750	25,416	0	0	6,350	5,396	0	0	0	0	0	0	25,400	17,617	0	0	1,350	716
Advertising	99,363	108,362	516	4,182	28,225	29,447	500	214	666	214	666	429	32,751	40,309	650	540	2,600	2,930
Police and security	69,000	103,925	2,500	2,800	10,000	13,426	2,600	2,712	2,600	2,712	2,600	2,639	21,000	35,794	2,500	2,757	2,800	3,295
Racetech Starting Stalls	68,000	72,250	4,250	4,250	4,250	4,250	4,250	4,250	4,250	4,250	4,250	4,250	4,250	4,250	4,250	4,250	4,250	4,250
Racetech Photofinish/Public Address/Timing	22,400	21,862	1,400	1,286	1,400	1,286	1,400	1,286	1,400	1,286	1,400	1,286	1,400	1,286	1,400	1,286	1,400	1,286
Medical / Vets Costs	63,700	64,946	3,700	3,493	4,000	5,197	4,000	3,864	3,200	3,591	3,200	4,285	6,600	5,136	3,800	3,042	4,200	3,060
BHA Fixture Licence Fee	72,096	74,272	4,506	4,642	4,506	4,642	4,506	4,642	4,506	4,642	4,506	4,642	4,506	4,642	4,506	4,642	4,506	4,642
HBLB Appearance Money Payments	-	-	0	0	0	0	0	0	0	0	0	0	0	0	0	0	0	0
Fixture Rental Fee	48,000	37,000	0	0	29,000	29,000	4,000	4,000	0	0	15,000	0	0	0	0	0	0	0
BHA Fixture Fees ( Field Force etc )	161,552	166,384	10,097	10,399	10,097	10,399	10,097	10,399	10,097	10,399	10,097	10,399	10,097	10,399	10,097	10,399	10,097	10,399
Racetech TV coverage (integrity and cctv)	67,254	63,724	4,203	3,765	4,209	3,765	4,203	3,765	4,203	3,765	4,203	3,765	4,203	3,765	4,203	3,765	4,203	3,765
Operational Costs ( Big Screen etc )	293,480	347,873	3,583	3,617	39,785	43,161	3,583	3,464	3,323	3,182	3,323	3,261	168,371	186,911	3,583	3,775	6,873	9,722
<b>Total Raceday Expenditure</b>	<b>1,507,561</b>	<b>1,636,010</b>	<b>56,926</b>	<b>56,942</b>	<b>176,222</b>	<b>185,131</b>	<b>63,495</b>	<b>54,854</b>	<b>64,426</b>	<b>66,003</b>	<b>68,440</b>	<b>52,320</b>	<b>409,415</b>	<b>452,789</b>	<b>55,369</b>	<b>57,603</b>	<b>62,124</b>	<b>65,692</b>
<b>Gross Prize Money</b>	<b>1,104,961</b>	<b>1,199,297</b>	<b>66,361</b>	<b>66,361</b>	<b>223,400</b>	<b>239,366</b>	<b>36,800</b>	<b>40,311</b>	<b>59,400</b>	<b>59,751</b>	<b>52,200</b>	<b>57,420</b>	<b>138,600</b>	<b>142,476</b>	<b>44,000</b>	<b>48,748</b>	<b>43,200</b>	<b>42,700</b>
less																		
HBLB General Prize Fund	256,172	266,174	13,520	13,500	47,846	47,800	8,194	8,200	14,704	14,700	11,942	11,900	39,955	40,000	9,377	8,900	9,377	8,900
Prize Money Grants	-	-	0	0	0	0	0	0	0	0	0	0	0	0	0	0	0	0
Race Incentive Funding (RIF)	157,789	129,434	12,563	12,563	16,763	15,788	6,300	7,200	7,275	5,400	9,000	9,000	20,813	22,313	6,300	2,800	6,300	2,800
Entry Fees	78,484	98,216	3,000	3,474	16,560	24,490	2,095	2,916	3,881	4,064	2,500	4,012	6,000	11,788	2,500	3,311	2,772	3,314
Total Non-Executive	492,445	493,824	29,083	29,537	81,169	88,078	16,589	18,316	25,860	24,164	23,442	24,912	66,768	74,101	18,177	15,011	18,449	15,014
Cost Prize Money to MRC	612,516	705,473	37,278	36,824	142,231	151,288	20,211	21,995	33,540	35,587	28,758	32,508	71,832	68,375	25,823	33,737	24,751	27,686
<b>Expenditure + Prize Money</b>	<b>2,120,077</b>	<b>2,341,483</b>	<b>94,204</b>	<b>93,766</b>	<b>318,453</b>	<b>336,419</b>	<b>83,706</b>	<b>76,849</b>	<b>97,966</b>	<b>101,590</b>	<b>97,198</b>	<b>84,828</b>	<b>481,247</b>	<b>521,164</b>	<b>81,192</b>	<b>91,340</b>	<b>86,875</b>	<b>93,378</b>
<b>Raceday Profit/ -loss</b>	<b>890,753</b>	<b>1,042,475</b>	<b>60,841</b>	<b>61,623</b>	<b>-53,510</b>	<b>-47,628</b>	<b>38,404</b>	<b>51,645</b>	<b>95,559</b>	<b>94,915</b>	<b>35,497</b>	<b>52,913</b>	<b>189,496</b>	<b>192,830</b>	<b>44,983</b>	<b>56,796</b>	<b>50,618</b>	<b>59,681</b>
<b>Difference</b>		<b>78,806</b>		<b>782</b>		<b>5,882</b>		<b>13,241</b>		<b>-645</b>		<b>17,416</b>		<b>3,334</b>		<b>11,813</b>		<b>9,063</b>

	9		10		11		12		13		14		15		16		
2019 DATES	Budget	Forecast	Budget	Forecast	Budget	Forecast	Budget	Forecast	Budget	Forecast	Budget	Forecast	Budget	Forecast	Budget	Forecast	Forecast
2018 DATES (COMPARABLE)	02-Aug	02-Aug	09-Aug	09-Aug	27-Aug	27-Aug	28-Aug	28-Aug	06-Sep	06-Sep	14-Sep	14-Sep	29-Sep	29-Sep	14-Oct	14-Oct	15-Oct
Raceday Income	03-Aug	03-Aug	10-Aug	10-Aug	29-Aug	29-Aug	30-Aug	30-Aug	07-Sep	07-Sep	15-Sep	15-Sep	30-Sep	30-Sep	15-Oct	15-Oct	Extra Fix
	£	£	£	£	£	£	£	£	£	£	£	£	£	£	£	£	£
Admissions	34,400	45,443	20,400	11,581	7,350	5,747	5,550	8,475	10,400	14,253	42,000	64,298	20,000	25,360	7,200	7,972	1,692
Racecards	2,000	2,034	1,750	1,211	800	466	1,200	895	1,200	840	1,500	2,638	1,550	2,053	600	518	197
Annual Members subscription fees	1,800	1,440	1,800	1,440	1,800	1,440	1,800	1,440	1,800	1,440	1,800	1,440	1,800	1,440	1,800	1,440	0
Bookmakers' badges	3,600	3,760	2,550	956	1,900	1,678	1,900	1,546	2,500	2,470	5,500	5,907	3,800	3,550	1,800	1,516	627
SIS LBO License Fee Per Race	63,969	65,640	64,969	60,690	60,169	65,570	67,369	73,320	67,769	66,170	67,569	96,230	66,369	83,027	77,369	76,980	78,182
RMG Media Rights License Fee	21,467	21,467	21,467	21,467	21,467	21,467	21,467	21,467	21,467	21,467	21,467	21,467	21,467	21,467	21,467	21,467	0
Totepool Commission	0	0	0	0	0	0	0	0	0	0	0	0	0	0	0	0	0
Betting Shop Commission	320	723	280	1,081	240	682	250	786	200	576	850	1,105	680	1,271	220	220	50
Catering Commission	4,800	7,042	3,100	2,345	1,200	1,267	1,800	2,067	2,740	2,333	6,900	11,166	5,000	3,938	600	863	198
Corporate Hospitality	20,258	25,037	22,100	31,933	5,200	2,251	14,140	27,177	24,425	20,559	15,050	27,533	8,500	12,836	3,500	2,265	0
Sponsors Contribution	7,200	5,700	10,840	10,880	2,505	2,450	6,233	12,343	4,620	4,520	8,500	10,840	12,000	14,550	8,000	5,000	0
HBLB Appearance Money	0	0	0	0	0	0	0	0	0	0	0	0	0	0	0	0	0
HBLB Fixture Incentive Scheme	0	0	0	0	0	0	0	0	0	0	0	0	0	0	0	0	0
HBLB Integrity Grant (fieldforce/cameras)	12,839	12,304	12,839	12,304	12,839	12,304	12,839	12,304	12,839	12,304	12,839	12,304	12,839	12,304	12,839	12,304	0
Share of sale/claims	0	0	0	0	0	0	0	0	0	0	0	0	0	0	0	0	0
Contribution for fixture transfers	0	0	0	0	0	0	0	0	0	0	0	0	0	0	0	0	0
<b>Total Raceday Income</b>	<b>172,653</b>	<b>190,590</b>	<b>162,095</b>	<b>155,888</b>	<b>115,470</b>	<b>115,322</b>	<b>134,548</b>	<b>161,820</b>	<b>149,960</b>	<b>146,932</b>	<b>183,975</b>	<b>254,928</b>	<b>154,005</b>	<b>181,796</b>	<b>135,395</b>	<b>130,545</b>	<b>80,946</b>
<b>Raceday Expenditure</b>																	
Officials (including refreshments)	1,000	1,808	1,500	1,316	900	911	950	890	1,300	1,404	1,450	1,169	970	890	1,050	1,456	889
Owners & Trainers Catering	1,700	1,871	1,800	1,622	1,700	2,156	1,700	1,856	1,700	1,946	1,900	2,239	1,700	2,459	1,700	1,798	2,396
Raceday Staff	3,600	4,259	3,000	3,414	2,700	3,016	2,700	3,046	2,900	3,134	3,800	4,588	4,000	3,863	3,100	2,899	2,458
Maintenance Track and Grounds	4,500	4,796	4,500	4,391	3,000	3,690	3,000	3,686	4,500	4,010	4,000	7,160	4,000	6,642	6,000	6,810	5,463
Stables & Accommodation	3,000	3,847	4,000	3,505	4,000	4,081	4,000	4,079	4,000	2,177	4,000	4,102	4,000	4,060	4,000	3,437	2,893
Racecards	2,580	2,896	2,580	2,435	2,435	2,460	2,580	2,460	2,580	2,310	3,600	2,954	2,872	2,547	2,581	2,373	2,373
Corp Hosp (Catering/Marquees etc)	10,200	12,383	11,500	16,988	2,665	3,531	8,900	10,416	11,347	7,682	7,516	9,002	4,302	7,825	1,643	725	0
Sponsorship (Banners/ BTO )	1,300	1,563	1,300	1,505	1,300	1,340	1,300	1,697	1,300	1,502	1,300	1,543	1,300	1,743	1,300	1,237	1,216
Marketing	300	300	0	0	0	0	0	0	0	0	4,000	1,037	350	350	0	0	0
Advertising	5,736	3,333	2,366	1,130	450	250	450	299	600	727	14,537	16,400	8,000	7,346	650	612	0
Police and security	3,200	4,988	2,700	3,643	2,300	2,629	2,300	2,628	2,400	2,791	4,000	11,113	3,000	4,608	2,500	2,608	2,782
Racetech Starting Stalls	4,250	4,250	4,250	4,250	4,250	4,250	4,250	4,250	4,250	4,250	4,250	4,250	4,250	4,250	4,250	4,250	4,250
Racetech CCTV/Public Address/Timing	1,400	1,286	1,400	1,286	1,400	1,286	1,400	1,286	1,400	1,286	1,400	1,286	1,400	1,286	1,400	1,286	1,286
Medical / Vets Costs	3,900	2,763	3,800	2,525	3,300	3,565	4,300	3,554	3,300	3,921	4,400	4,748	3,800	4,657	4,200	3,751	3,794
BHA Fixture Licence Fee	4,506	4,642	4,506	4,642	4,506	4,642	4,506	4,642	4,506	4,642	4,506	4,642	4,506	4,642	4,506	4,642	0
HBLB Appearance Money Payments	0	0	0	0	0	0	0	0	0	0	0	0	0	0	0	0	0
Fixture Rental Fee	0	0	0	0	0	4,000	0	0	0	0	0	0	0	0	0	0	0
BHA Fixture Fees ( Field Force etc )	10,097	10,399	10,097	10,399	10,097	10,399	10,097	10,399	10,097	10,399	10,097	10,399	10,097	10,399	10,097	10,399	0
Racetech TV coverage (integrity and cctv)	4,203	3,765	4,203	3,765	4,203	3,765	4,203	3,765	4,203	3,765	4,203	3,765	4,203	3,765	4,203	3,765	3,484
Operational Costs ( Big Screen etc )	10,158	16,510	3,323	6,744	3,323	3,534	3,323	3,506	3,583	3,441	22,920	38,194	10,843	11,329	3,583	3,956	3,566
<b>Total Raceday Expenditure</b>	<b>75,630</b>	<b>85,659</b>	<b>66,825</b>	<b>73,560</b>	<b>52,529</b>	<b>59,505</b>	<b>59,959</b>	<b>62,459</b>	<b>63,966</b>	<b>59,387</b>	<b>101,879</b>	<b>128,591</b>	<b>73,593</b>	<b>82,661</b>	<b>56,763</b>	<b>56,004</b>	<b>36,850</b>
<b>Gross Prize Money</b>	<b>46,000</b>	<b>46,000</b>	<b>63,000</b>	<b>68,045</b>	<b>39,800</b>	<b>37,100</b>	<b>48,200</b>	<b>46,900</b>	<b>41,800</b>	<b>39,300</b>	<b>75,000</b>	<b>94,545</b>	<b>61,200</b>	<b>64,100</b>	<b>66,000</b>	<b>63,575</b>	<b>42,600</b>
less																	
HBLB General Prize Fund	10,758	10,300	16,677	16,200	10,364	9,900	9,772	9,300	8,391	7,900	17,860	17,400	10,758	10,300	16,677	15,974	15,000
Prize Money Grants (e.g. Lead Fixture Pa	0	0	0	0	0	0	0	0	0	0	0	0	0	0	0	0	0
Race Incentive Funding (RIF)	6,900	3,600	10,200	6,560	6,300	2,800	6,300	2,800	6,300	2,800	21,250	18,160	8,175	4,600	7,050	7,450	2,800
Entry Fees	3,300	2,958	7,000	4,392	3,182	3,482	3,363	3,627	2,667	3,594	5,000	8,588	7,399	4,546	7,265	5,155	4,505
Total Non-Executive	20,958	16,858	33,877	27,152	19,846	16,182	19,435	15,727	17,358	14,294	44,110	44,148	26,332	19,446	30,992	28,579	22,305
Cost Prize Money to MRC	25,042	29,142	29,123	40,893	19,954	20,918	28,765	31,173	24,442	25,006	30,890	50,397	34,868	44,654	35,008	34,996	20,295
<b>Expenditure + Prize Money</b>	<b>100,672</b>	<b>114,801</b>	<b>95,948</b>	<b>114,453</b>	<b>72,483</b>	<b>80,423</b>	<b>88,724</b>	<b>93,632</b>	<b>88,408</b>	<b>84,393</b>	<b>132,769</b>	<b>178,988</b>	<b>108,461</b>	<b>127,315</b>	<b>91,771</b>	<b>91,000</b>	<b>57,145</b>
<b>Raceday Profit/ -loss</b>	<b>71,981</b>	<b>75,789</b>	<b>66,147</b>	<b>41,435</b>	<b>42,987</b>	<b>34,899</b>	<b>45,824</b>	<b>68,188</b>	<b>61,552</b>	<b>62,539</b>	<b>51,206</b>	<b>75,940</b>	<b>45,544</b>	<b>54,481</b>	<b>43,624</b>	<b>39,546</b>	<b>23,801</b>
<b>Difference</b>		<b>3,808</b>		<b>-24,712</b>		<b>-8,088</b>		<b>22,364</b>		<b>987</b>		<b>24,734</b>		<b>8,937</b>		<b>-4,079</b>	

25,000  
18,083

MUSSELBURGH RACING 2019-20 JUMP

	17		18		19		20	
2019 DATES	Budget	Forecast	Budget	Forecast	Budget	Forecast	Budget	Forecast
2018 DATES (COMPARABLE)	Total	Total	06-Nov	06-Nov	25-Nov	25-Nov	02-Dec	02-Dec
	£	£	07-Nov	07-Nov	26-Nov	26-Nov	03-Dec	03-Dec
			£	£	£	£	£	£
<b>Raceday Income</b>								
Admissions	187,100	186,945	5,000	8,126	4,550	4,769	5,000	0
Racecards	12,920	11,779	670	977	750	502	500	0
Annual Members subscription fees	19,200	15,840	1,600	1,440	1,600	1,440	1,600	1,440
Bookmakers' badges	30,840	27,190	1,850	1,200	1,600	1,600	1,500	0
SIS LBO License Fee Per Race	806,536	759,596	57,059	75,590	59,659	68,220	58,259	50,000
RMG Media Right License Fee	343,476	300,542	21,467	21,467	21,467	21,467	21,467	0
Totepool Commission	0	0	0	0	0	0	0	0
Betting Shop Commission	5,470	4,810	340	340	320	320	280	0
Catering Commission	25,254	22,385	1,000	1,018	1,100	734	1,000	0
Corporate Hospitality	90,830	87,079	7,535	15,064	5,050	5,050	6,810	0
Sponsors Contribution	90,440	70,660	1,840	2,000	1,132	840	0	0
HBLB Appearance Money	0	0	0	0	0	0	0	0
HBLB Fixture Incentive Scheme	64,000	58,000	0	0	0	0	0	0
HBLB Integrity Grant (Fieldforce/cameras/photo)	154,068	137,213	12,839	12,304	12,839	12,304	12,839	12,304
Share of sale/claims	0	0	0	0	0	0	0	0
Contribution for fixture transfers	15,000	5,000	0	0	0	0	10,000	0
<b>Total Raceday Income</b>	<b>1,845,134</b>	<b>1,687,039</b>	<b>111,200</b>	<b>139,526</b>	<b>110,067</b>	<b>117,246</b>	<b>119,255</b>	<b>63,744</b>
<b>Raceday Expenditure</b>								
Officials (including refreshments)	17,700	15,300	1,300	1,300	1,300	1,300	1,300	500
Owners & Trainers (catering etc)	21,300	23,396	1,700	2,496	1,700	2,200	1,700	200
Raceday Staff	41,200	36,000	2,800	2,800	2,900	2,900	2,600	300
Maintenance Track and Grounds	65,100	63,200	5,100	6,900	5,100	5,500	5,100	3,000
Stables & Accommodation	48,900	43,000	4,000	4,000	4,000	4,000	4,000	2,000
Racecards	33,125	30,460	2,580	2,580	2,580	2,580	2,580	2,580
Corp Hosp (Catering/Marquees etc)	42,894	42,023	2,307	4,830	2,179	2,179	1,809	0
Sponsorship (Banners/ BTO )	15,600	13,300	1,300	1,300	1,300	1,300	1,300	300
Marketing	6,650	6,650	0	0	200	200	0	0
Advertising	33,332	32,682	600	600	866	866	640	640
Police and security	35,200	31,600	2,400	2,400	2,400	2,400	2,400	1,200
Racetech Photofinish/Public Address/Timing	16,400	15,000	1,300	1,300	1,300	1,300	1,300	1,300
Medical / Vets Costs	61,000	56,500	4,500	4,500	4,500	4,500	4,500	4,500
BHA Fixture Licence Fee	55,224	51,118	4,506	4,642	4,506	4,642	4,506	4,642
Appearance Money Payments	0	0	0	0	0	0	0	0
Fixture Rental Fee	16,500	12,500	0	0	0	0	0	0
BHA Fixture Fees ( Field Force etc )	154,068	129,593	12,839	10,399	12,839	10,399	12,839	10,399
Racetech TV coverage (integrity and cctv)	52,012	47,612	4,203	4,203	4,203	4,203	4,203	4,203
HFL Laboratory Costs	0	0	0	0	0	0	0	0
Operational Costs ( Big Screen etc)	91,899	103,316	3,648	3,648	3,388	3,388	3,648	3,648
<b>Total Raceday Expenditure</b>	<b>808,104</b>	<b>753,250</b>	<b>55,083</b>	<b>57,898</b>	<b>55,261</b>	<b>53,857</b>	<b>54,425</b>	<b>39,412</b>
<b>Gross Prize Money</b>	<b>846,100</b>	<b>762,200</b>	<b>40,500</b>	<b>42,200</b>	<b>38,400</b>	<b>39,000</b>	<b>44,400</b>	<b>0</b>
less								
HBLB General Prize Fund	288,744	264,263	17,120	16,600	14,350	13,800	17,120	0
Prize Money Grants (e.g. Lead Fixture Payments)	5,000	5,000	0	0	0	0	0	0
Race Incentive Funding (RIF)	144,675	127,800	5,400	2,400	4,500	2,400	5,400	0
HBLB Winter Jump Payment	0	0	0	0	0	0	0	0
Entry Fees	52,700	47,743	3,000	3,687	3,000	3,356	3,000	0
Total Non-Executive	491,119	444,806	25,520	22,687	21,850	19,556	25,520	0
Cost Prize Money to MRC (C-D)	354,981	317,394	14,980	19,513	16,550	19,444	18,880	0
<b>Expenditure plus Prize Money</b>	<b>1,163,085</b>	<b>1,070,644</b>	<b>70,063</b>	<b>77,411</b>	<b>71,811</b>	<b>73,301</b>	<b>73,305</b>	<b>39,412</b>
<b>Raceday Profit/ (loss)</b>	<b>682,049</b>	<b>616,395</b>	<b>41,137</b>	<b>62,115</b>	<b>38,256</b>	<b>43,945</b>	<b>45,950</b>	<b>24,332</b>
<b>Difference</b>		<b>-65,654</b>		<b>20,978</b>		<b>5,689</b>		<b>-21,618</b>
								<b>-711</b>

MUSSELBURGH RACING 2019-20 JUMP

	21		22		23		24		25		26		27		28	
2020 DATES	Budget	Forecast	Budget	Forecast	Budget	Forecast	Budget	Forecast	Budget	Forecast	Budget	Forecast	Budget	Forecast	Budget	Forecast
2019 DATES (COMPARABLE)	01-Jan	01-Jan	03-Jan	03-Jan	17-Jan	17-Jan	01-Feb	01-Feb	02-Feb	02-Feb	26-Feb	26-Feb	BHA TBC	BHA TBC	20-Mar	20-Mar
	01-Jan	01-Jan	07-Jan	07-Jan	18-Jan	18-Jan	02-Feb	02-Feb	03-Feb	03-Feb	27-Feb	27-Feb	10-Mar	10-Mar	15-Mar	15-Mar
	£	£	£	£	£	£	£	£	£	£	£	£	£	£	£	£
<b>Raceday Income</b>																
Admissions	105,000	105,000	5,000	10,000	3,500	3,500	18,250	18,250	15,500	15,500	3,500	3,500	3,500	0	12,000	12,000
Racecards	4,000	4,000	500	500	600	600	1,500	1,500	1,500	1,500	700	700	700	0	800	800
Annual Members subscription fees	1,600	1,440	1,600	1,440	1,600	1,440	1,600	1,440	1,600	1,440	1,600	1,440	1,600	0	1,600	1,440
Bookmakers' badges	8,000	8,000	1,800	1,800	1,500	1,500	4,750	4,750	3,640	3,640	1,500	1,500	1,500	0	1,600	1,600
SIS LBO License Fee Per Race	63,059	63,059	62,033	62,033	59,033	59,033	81,573	81,573	75,773	75,773	68,773	68,773	65,773	0	87,373	87,373
RMG Media Right License Fee	42,935	42,935	21,467	21,467	21,467	21,467	42,935	42,935	42,935	42,935	21,467	21,467	21,467	0	42,935	42,935
Totepool Commission	0	0	0	0	0	0	0	0	0	0	0	0	0	0	0	0
Betting Shop Commission	850	850	400	400	330	330	750	750	500	500	380	380	380	0	640	640
Catering Commission	7,500	7,500	1,226	1,226	1,200	1,200	3,700	3,700	2,500	2,500	1,521	1,521	1,521	0	1,986	1,986
Corporate Hospitality	10,000	10,000	3,155	3,155	7,110	7,110	15,500	15,500	8,230	8,230	4,470	4,470	4,470	0	5,000	5,000
Sponsors Contribution	20,000	20,000	2,920	2,920	1,000	0	21,000	20,000	20,000	15,000	3,900	3,900	2,188	0	15,000	5,000
HBLB Appearance Money	0	0	0	0	0	0	0	0	0	0	0	0	0	0	0	0
HBLB Fixture Incentive Scheme	0	0	8,000	8,000	20,000	20,000	0	0	15,000	15,000	15,000	15,000	6,000	0	0	0
HBLB Integrity Grant (Fieldforce/cameras)	12,839	12,571	12,839	12,571	12,839	12,571	12,839	12,571	12,839	12,571	12,839	12,571	12,839	0	12,839	12,571
Share of sale/claims	0	0	0	0	0	0	0	0	0	0	0	0	0	0	0	0
Contribution for fixture transfers	0	0	5,000	5,000	0	0	0	0	0	0	0	0	0	0	0	0
<b>Total Raceday Income</b>	<b>275,783</b>	<b>275,355</b>	<b>125,940</b>	<b>130,512</b>	<b>130,179</b>	<b>128,751</b>	<b>204,397</b>	<b>202,969</b>	<b>200,017</b>	<b>194,589</b>	<b>135,650</b>	<b>135,222</b>	<b>121,938</b>	<b>0</b>	<b>181,773</b>	<b>171,345</b>
<b>Raceday Expenditure</b>																
Officials (including refreshments)	1,700	1,700	1,500	1,500	1,500	1,500	1,500	1,500	1,500	1,500	1,600	1,600	1,600	0	1,600	1,600
Owners & Trainers Catering	2,200	2,700	1,800	2,300	1,700	2,200	1,700	2,200	2,000	2,500	1,700	2,200	1,700	0	1,700	2,200
Raceday Staff	10,000	10,000	2,900	2,900	2,900	2,900	2,900	2,900	2,900	2,900	2,900	2,900	2,900	0	2,900	2,900
Maintenance Track and Grounds	8,500	8,500	5,100	5,500	5,100	5,500	4,600	5,100	4,600	5,100	5,100	5,500	5,100	0	6,600	7,100
Stables & Accommodation	5,500	5,500	4,000	4,000	3,900	3,900	3,900	3,900	3,900	3,900	3,900	3,900	3,900	0	3,900	3,900
Racecards	3,800	3,800	2,686	2,686	2,686	2,686	2,973	2,973	2,665	2,665	2,665	2,665	2,665	0	2,665	2,665
Corp Hosp (Catering/Marquees etc)	7,337	7,337	2,300	2,300	2,665	2,665	7,500	7,500	3,919	3,919	1,585	1,585	1,585	0	3,458	3,458
Sponsorship (Banners/ BTO )	1,300	1,300	1,300	1,300	1,300	1,300	1,300	1,300	1,300	1,300	1,300	1,300	1,300	0	1,300	1,300
Marketing	5,800	5,800	0	0	0	0	650	650	0	0	0	0	0	0	0	0
Advertising	17,416	17,416	870	870	870	870	8,820	8,820	650	650	650	650	650	0	650	650
Police and security	8,800	8,800	2,400	2,400	2,400	2,400	2,400	2,400	2,400	2,400	2,400	2,400	2,400	0	2,400	2,400
Racetech CCTV/Public Address	1,400	1,400	1,400	1,400	1,400	1,400	1,400	1,400	1,400	1,400	1,400	1,400	1,400	0	1,400	1,400
Medical / Vets Costs	11,500	11,500	4,500	4,500	4,500	4,500	4,500	4,500	4,500	4,500	4,500	4,500	4,500	0	4,500	4,500
BHA Fixture Licence Fee	4,650	4,650	4,650	4,650	4,650	4,650	4,650	4,650	4,650	4,650	4,650	4,650	4,650	0	4,650	4,650
Appearance Money Payments	0	0	0	0	0	0	0	0	0	0	0	0	0	0	0	0
Fixture Rental Fee	11,250	11,250	1,250	1,250	0	0	0	0	0	0	0	0	4,000	0	0	0
BHA Fixture Fees ( Field Force etc )	12,839	12,571	12,839	12,571	12,839	12,571	12,839	12,571	12,839	12,571	12,839	12,571	12,839	0	12,839	12,571
Racetech TV coverage (integrity and c	4,400	4,400	4,400	4,400	4,400	4,400	4,400	4,400	4,400	4,400	4,400	4,400	4,400	0	4,400	4,400
HFL Laboratory Costs	0	0	0	0	0	0	0	0	0	0	0	0	0	0	0	0
Operational Costs ( Big Screen etc)	52,926	67,926	3,323	3,323	3,323	3,323	3,948	3,948	3,623	3,623	3,583	3,583	3,583	0	3,583	3,583
<b>Total Raceday Expenditure</b>	<b>171,318</b>	<b>186,550</b>	<b>57,218</b>	<b>57,850</b>	<b>56,133</b>	<b>56,765</b>	<b>69,980</b>	<b>70,712</b>	<b>57,246</b>	<b>57,978</b>	<b>55,172</b>	<b>55,804</b>	<b>59,172</b>	<b>0</b>	<b>58,545</b>	<b>59,277</b>
<b>Gross Prize Money</b>	<b>96,000</b>	<b>101,800</b>	<b>39,200</b>	<b>37,400</b>	<b>41,200</b>	<b>38,900</b>	<b>130,000</b>	<b>131,800</b>	<b>112,000</b>	<b>111,600</b>	<b>46,300</b>	<b>43,000</b>	<b>51,000</b>	<b>0</b>	<b>140,600</b>	<b>154,000</b>
less																
HBLB General Prize Fund	38,926	36,899	16,699	13,556	19,600	14,100	43,522	46,577	36,440	40,415	18,771	15,586	19,864	0	19,864	40,597
Prize Money Grants (e.g. Lead Fixture Pay	0	0	0	0	0	0	0	0	5,000	5,000	0	0	0	0	0	0
Race Incentive Funding (RIF)	10,475	7,100	4,500	2,000	4,500	2,000	13,975	9,900	16,800	12,800	5,400	2,400	5,400	0	53,700	76,800
HBLB Winter Jump Payment	0	0	0	0	0	0	0	0	0	0	0	0	0	0	0	0
Entry Fees	6,700	6,700	2,000	2,000	2,000	2,000	10,000	10,000	6,000	6,000	3,000	3,000	3,000	0	8,000	8,000
Total Non-Executive	56,101	50,699	23,199	17,556	26,100	18,100	67,497	66,477	64,240	64,215	27,171	20,986	28,264	0	81,564	125,397
Cost Prize Money to MRC (C-D)	39,899	51,101	16,001	19,844	15,100	20,800	62,503	65,323	47,760	47,385	19,129	22,014	22,736	0	59,036	28,603
<b>Expenditure plus Prize Money</b>	<b>211,217</b>	<b>237,651</b>	<b>73,219</b>	<b>77,694</b>	<b>71,233</b>	<b>77,565</b>	<b>132,483</b>	<b>136,035</b>	<b>105,006</b>	<b>105,363</b>	<b>74,301</b>	<b>77,818</b>	<b>81,908</b>	<b>0</b>	<b>117,581</b>	<b>87,880</b>
<b>Raceday Profit/ (loss)</b>	<b>64,566</b>	<b>37,704</b>	<b>52,721</b>	<b>52,818</b>	<b>58,946</b>	<b>51,186</b>	<b>71,914</b>	<b>66,934</b>	<b>95,011</b>	<b>89,226</b>	<b>61,349</b>	<b>57,404</b>	<b>40,030</b>	<b>0</b>	<b>64,192</b>	<b>83,465</b>
<b>Difference</b>		<b>-26,862</b>		<b>97</b>		<b>-7,760</b>		<b>-4,980</b>		<b>-5,785</b>		<b>-3,945</b>		<b>-40,030</b>		<b>19,273</b>



## MUSSELBURGH RACING ATTENDANCES 2018/19 TO 2019-20

	FIXTURE LIST 2019/20	2018/19			2019-20			2018/19 Total	Remarks on changes from 2018-19 to 19-20	
		Paying Public	Comps Members Owners Trainers	Comps Kids	Paying Public	Comps Members Owners Trainers	Comps Kids			
Flat	Tuesday 2 April	572	679	17	1,268	Abandoned		-		
Flat	Easter Saturday	4,048	860	641	5,549	2,518	611	282	3,411	Was in March in 2018
Flat	Thursday 2 May	394	461	0	855	514	436	20	970	Was an evening fixture in 2018
Flat	Friday 3 May	1,142	481	22	1,645	1,154	456	17	1,627	
Flat	Monday 13 May	448	496	6	950	0	0	0	-	New fixture 2019
Flat	Saturday 1 June	9,561	867	0	10,428	9,016	1,004	0	10,020	
Flat	Saturday 8 June	0	0	0	-	3,581	790	49	4,420	Not staged in 2019
Flat	Wednesday 3 July	1,013	546	52	1,611	766	528	54	1,348	
Flat	Tuesday 23 July	1,536	648	985	3,169	1,318	400	1,065	2,783	
Flat	Friday 2 August (Eve)	3,150	522	91	3,763	2,247	669	97	3,013	
Flat	Friday 9 August	995	446	98	1,539	1,527	518	105	2,150	
Flat	Tuesday 27 August (Eve)	265	465	23	753	562	498	17	1,077	Moved from Wednesday 29 August 2018
Flat	Wednesday 28 August	706	429	20	1,155	530	409	17	956	Moved from Thursday 30 August 2018
Flat	Friday 6 September (Eve)	1,008	485	17	1,510	1,062	457	8	1,527	
Flat	Saturday 14 September (Twilight)	3,589	690	35	4,314	2,299	759	26	3,084	
Flat	Sunday 29 September	1,808	885	330	3,023	1,220	967	250	2,437	
Flat	Monday 14 October	457	459	65	981	545	507	45	1,097	
Flat	Tuesday 15 October	200	251	32	483	0	0	0	-	Extra Meeting
N/Hunt	Wednesday 6 November	609	532	1	1,142	555	452	5	1,012	
N/Hunt	Monday 25 November	0	0	0	-	462	410	7	879	
N/Hunt	Monday 2 December	Abandoned			-	472	416	7	895	New Fixture
N/Hunt	Monday 9 December	0	0	0	-	474	463	3	940	
N/Hunt	Tuesday 1 January	0	0	0	-	4,835	701	272	5,808	
N/Hunt	Monday 6 January	0	0	0	-	221	389	11	621	
N/Hunt	Friday 17 January	0	0	0	-	Abandoned			-	
N/Hunt	Saturday 1 February	0	0	0	-	Abandoned			-	
N/Hunt	Sunday 2 February	0	0	0	-	Abandoned			-	
N/Hunt	Sunday 9 February	0	0	0	-	Abandoned			-	Extra Meeting 2019
N/Hunt	Wednesday 12 February	0	0	0	-	998	358		1,356	
N/Hunt	Wednesday 26 February	0	0	0	-	777	384	0	1,161	
N/Hunt	Thursday 27 February	0	0	0	-	365	349	0	714	Extra Meeting 2019
N/Hunt	Sunday 8 March	0	0	0	-	504	523	0	1,027	
N/Hunt	Friday 20 March	0	0	0	-	641	571	14	1,226	
	<b>TOTAL</b>	<b>31,501</b>	<b>10,202</b>	<b>2,435</b>	<b>44,138</b>	<b>39,163</b>	<b>14,025</b>	<b>2,371</b>	<b>55,559</b>	

# FLAT 2019-20

1													The Sponsor Borderlescott Sprint Trophy Raceday			
RACE TIMES	AGE	RACE TYPE	Actual Runs 17	Budget Runs 19	Actual Runs 19	RATING	CLASS	DISTANCE	SF	PRIZEMONEY	TPF	Entry	SPONSOR/RACE TITLE	SPONSOR INCOME	RIF	Notes
TUESDAY 2ND APRIL													£1,000.00 SPONSOR INCOME £0.00			
£361													To be Achieved			
2.15	2YO	NOVICE	10	8	7	OPEN	4	5F	14	£7,000	£7,400	£37	Was supposed to be EBF	£1,000.00	£900.00	EBF £1k
2.45	4YO+	H'CAP	9	9	9	46-65	6	1M4F	14	£4,400	£6,000	£24				
3.15	3YO+	CONDITIONS RACE	11	8	8	WFA	2	5F	14	£20,000	£20,700	£104			£900.00	£6,188.00
3.45	4YO+	H'CAP	13	13	10	76-95	3	7F	12	£700	£13,000	£69	The Borderlescott Sprint Trophy (A Conditions Race) (Class 2)			£1,875.00
4.15	4YO+	H'CAP	3	8	8	61-80	4	1M6F	14	£700	£8,400	£44			£900.00	
4.45	3YO	H'CAP	9	9	12	56-75	5	7F	12	£400	£5,400	£29			£900.00	
5.15	4YO+	H'CAP	7	8	9	46-65	6	5F	14	£400	£4,400	£24			£900.00	
													£700			
													£13,000			
													£700			
													£8,400			
													£400			
													£5,400			
													£400			
													£4,400			
													£400			
													£66,361			
													£70,800			
													£1,000.00			
													£12,563.00			
2													The Sponsor Easter Saturday featuring the Queen's Cup			
SATURDAY 20TH APRIL													£20,000.00 SPONSOR INCOME £0.00			
RACE TIMES													SPONSOR/RACE TITLE			
AGE													To be Achieved			
RACE TYPE																
Actual Runs 18																
Budget Runs 19																
Actual Runs 19																
RATING																
CLASS																
DISTANCE																
SF																
PRIZEMONEY																
TPF																
Entry																
													The Musselburgh Silver Arrow Handicap (Class 3)			
1.50 ITV	4YO+	H'CAP	10	10	10	81-95	3	7F	12	£20,000	£20,700	£104			£1,875.00	ITV4 -
													£700			
													£30,000			
													£350			
2.25 ITV	3YO	H'CAP	9	10	7	0-100	2	1M	14	£30,000	£30,350	£152	The Musselburgh Silver Arrow Handicap (Class 3)		£0.00	ITV4 -
													The Royal Mile Handicap (Class 2)			
													The Royal Mile Trophy (Class 2)			
													The Scottish Sprint Cup (A Handicap) (Class 2)			
3.00 ITV	4YO+	H'CAP	11	14	16	OPEN	2	5F	17	£50,000	£50,700	£254	The Scottish Sprint Cup (A Handicap) (Class 2)		£0.00	ITV4 -
													£700			
													£100,000			
													£100,700			
3.35 ITV	4YO+	H'CAP	13	14	14	OPEN	2	1M6F	16	£100,000	£100,700	£150	The Queen's Cup (A Heritage Handicap) (Class 2)		£6,188.00	ITV4 -
													£700			
													£350			
													£700			
4.05	4YO+	SELLER	9	8	5	WFA	4	1M4F	14	£8,400	£10,000	£44	The Queen's Cup (A Heritage Handicap) (Class 2)		£0.00	Early Closing 26th March 2019. Weights 4th April. Confirm Monday 15th April.
													£400			
													£10,000			
													£400			
4.40	3YO+	H'CAP	3	10	6	66-85	4	1M1F	12	£8,400	£10,000	£44	Follow @RacingTV on Twitter		£900.00	
													£400			
													£8,400			
													£10,000			
													£400			
5.15	4YO+	H'CAP	7	10	18	61-75	5	5F	17	£6,400	£8,000	£34	Like Racing TV on Facebook		£900.00	
													£400			
													£6,400			
													£8,000			
													£400			
													£6,800			
													£8,000			
													£239,366			
													£238,450			
													£0.00			
													£15,788.00			
3													The Sponsor Raceday			
THURSDAY 2ND MAY													£2,880.00 SPONSOR INCOME £0.00			
RACE TIMES													SPONSOR/RACE TITLE			
AGE													To be Achieved			
RACE TYPE																
Actual Runs 18																
Budget Runs 19																
Actual Runs 19																
RATING																
CLASS																
DISTANCE																
SF																
PRIZEMONEY																
TPF																
Entry																
													EBF			
1.45	3YO+	NOVICE MED AUC	4	5	3	30,000	5	1M4F	14	£289	£5,600	£30		£1,500.00	£900.00	EBF £1.5k
													£400			
													£4,400			
													£6,000			
													£400			
2.15	4YO+	H'CAP	12	12	13	46-60	6	5F	14	£4,400	£6,000	£24	Follow @racingtv On Twitter		£900.00	
													£400			
													£4,400			
													£6,000			
													£400			
2.45	3YO	H'CAP	5	6	9	46-65	6	1M1F	14	£4,400	£6,000	£24	Boogie in the Morning	£2,000.00	£900.00	
													£400			
													£5,400			
													£7,000			
													£400			
3.15	4YO+	H'CAP	8	8	7	61-75	5	1M4F	14	£4,400	£7,000	£29	MacRoberts LLP	£1,680.00	£900.00	
													£400			
													£4,400			
													£6,000			
													£400			
3.50	3YO	H'CAP	6	6	8	46-60	6	5F	14	£4,400	£6,000	£24			£900.00	
													£400			
													£4,400			
													£6,000			
													£400			
4.25	4YO+	H'CAP	12	12	22	46-60	6	7F	12	£4,400	£6,000	£24			£900.00	
													£400			
													£4,400			
													£6,000			
													£400			
5.00	4YO+	H'CAP	9	9	9	46-65	6	1M1F	14	£4,400	£6,000	£24			£900.00	
													£400			
													£4,400			
													£6,000			
													£400			
													£4,800			
													£5,000			
													£40,311			
													£48,000			
													£5,180.00			
													£7,200.00			

4		Chepstow £52k				FRIDAY 3RD MAY								The Weatherbys Raceday		£32,200.00			
RACE TIMES	AGE	RACE TYPE	Actual Runs 18	Budget Runs 19	Actual Runs 19	RATING	CLASS	DISTANCE	SF	PRIZEMONEY	TPF	Entry	SPONSOR/RACE TITLE	SPONSOR INCOME	RIF	Notes			
1.55	2YO	MAIDEN	7	7	5	OPEN	4	5F	14	£7,000 £400	£7,400	£37	<b>To be Achieved</b> Quest Precision EBF	£0.00 £1,840.00	£900.00	EBF £1k			
2.25	4YO+	H'CAP	13	12	12	66-85	4	5F	14	£8,400 £400	£10,000	£44	Core (oil and gas)	£840.00	£900.00				
2.55	3YO+	H'CAP	10	10	6	66-85 was 61-80!	4	1M1F	14	£8,400 £400	£10,000	£44	The Weatherbys Private Banking	£12,500.00	£900.00	Weatherbys provide Memento for winning owner and BTO £50			
3.25	4YO+	H'CAP	8	8	6	76-95 was 46-60	3	1M4F	14	£15,000 £0	£15,000	£75	Jackson Boyd - more than just	£1,680.00 £0.00	£0.00				
4.00	3YO	H'CAP	9	9	5	61-80	4	7F	12	£8,400 £400	£10,000	£44	Weatherbys Private Banking	£12,500.00	£900.00	Weatherbys provide Memento for winning owner and BTO £50			
4.35	4YO+	H'CAP	11	10	8	61-75	5	7F	12	£5,400 £400	£7,000	£29	Calum Logan - Happy 30th Birthday Race	£840.00	£900.00				
5.10	4YO+	H'CAP	11	11	11	46-60	6	1M6F	14	£4,400 £400	£6,000	£24	Central Taxis App	£840.00	£900.00				
			69	67	53					£351 £59,751	£65,400			£31,040.00	£5,400.00				
5						MONDAY 13TH MAY								The Goliath Cup Raceday supporting Racing Welfare's Mental Health Awareness Week		£2,000.00			
RACE TIMES	AGE	RACE TYPE	Actual Runs 18	Budget Runs 19	Actual Runs 19	RATING	CLASS	DISTANCE	SF	PRIZEMONEY	TPF	Entry	SPONSOR/RACE TITLE	SPONSOR INCOME	RIF	Notes			
2.00	3YO+	MAIDEN AUCTION	10	10	6	Max 20,000	6	1M1F	14	£5,000 £0	£5,000	£25	Musselburgh Racecourse is supporting Mental Health Awareness Week	£0.00	£900.00				
2.30	4YO+	H'CAP	11	11	12	46-55	6	5F	14	£4,400 £400	£6,000	£24	Racing Welfare Mental Health First Aid Training	£0.00	£900.00				
3.05	4YO+	H'CAP	6	6	7	71-90	3	7F	12	£13,000 £596	£13,596	£68	Alzheimer Scotland	£1,500.00					
3.35	4YO+	H'CAP	10	10	5	0-90	3	1M6F	14	£15,000	£14,825	£74	Racing Welfare #mentalhealthawarenessweek Goliath Cup	£3,000.00					
4.10	4YO+	H'CAP	9	9	22	46-60	6	7F	12	£4,400 £400	£6,000	£24	<b>The Goliath Cup (A Handicap) (Class 3)</b> #BeBodyKind	£0.00	£900.00				
4.40	3YO	H'CAP	7	7	8	46-65	6	5F	14	£4,400 £400	£6,000	£24	Racing Welfare Supporting Racing's Workforce	£0.00	£900.00				
5.10	4YO+	H'CAP	8	8	8	46-60	6	2M	14	£4,400 £400	£6,000	£24	Start a conversation on Mental Health	£0.00	£900.00				
			61	61	68					£4,800 £57,420.00	£5,000 £62,420			£0.00	£9,000.00				
6		NEWCASTLE (EVE)				SATURDAY 1ST JUNE								The Stobo Castle Ladies Day		£35,000.00		NO STALLS TESTS OR DIVIDED RACES	
RACE TIMES	AGE	RACE TYPE	Actual Runs 18	Budget Runs 19	Actual Runs 19	RATING	CLASS	DISTANCE	SF	PRIZEMONEY	TPF	Entry	SPONSOR/RACE TITLE	SPONSOR INCOME	RIF	Notes			
1.40	2YO	CONDITIONS	7	6	3	OPEN	2	5F	14	£20,666	£19,034	£100	EBF stallions.com Edinburgh Castle Stakes (A Conditions Race)	£5,000.00	£4,950.00	EBF £5k - EBF sole sponsor. £300 Appearance Money guarantee to 8th place.			
2.15	4YO+	H'CAP Review	11	11	7	61-80	4	1M1F	14	£7,900 £900	£10,000	£44	<b>The Edinburgh Castle Stakes (A Conditions Race) (Class 2)</b> Pace Yourself To Go The Distance	£0.00 £0.00	£900.00				
2.50	3YO	H'CAP	6	8	9	71-90	3	7F	14	£20,000 £0	£20,000	£90	The Madeleine Cup	£5,000.00	£0.00	Trophy			
3.25	3YO	H'CAP	10	10	9	0-90	3	1M4F	14	£25,607 £0	£25,607	£125	The Gaynor Winyard	£5,000.00	£0.00	Trophy			
4.00	3YO+	FILLIES' & MARES LISTED	10	10	8	WFA	1	7F	12	£40,600	£40,600	£200	The Stobo Castle Ladies Day Gold Cup (registered as The Maggie Dickson Fillies' Stakes) (Class 1)	£10,000.00	£14,063.00	Branded no cloths - need to invoice Stobo for £250 + VAT , BIG GOLD CUP Invoiced 13/4/18			
4.30	DERBY									£0				£0.00	£0.00				
4.55	4YO+	H'CAP	9	12	7	71-90	3	5F	14	£20,000 £0	£20,000	£100	The McGladery and Friends	£3,000.00	£0.00				
5.30	4YO+	LADY RIDERS PROAM H'CAP	8	8	9	61-80	4	1M6F	14	£7,900 £900	£10,000	£44	Silk Series Edinburgh Gin	£0.00 £15,000.00	£900.00	Trophies for OWNER, TRAINER & JOCKEY being sent. The Silk Series - £2.5k sponsorship wld go straight to charity			
			61	65	52					-365 £142,476	£145,245			£1,500.00	£22,313.00				

7		Thirsk	Actual Runs 18	Budget Runs 19	Actual Runs 19	WEDNESDAY 3RD JULY							The ROA Raceday	£5,500.00		
RACE TIMES	AGE	RACE TYPE				RATING	CLASS	DISTANCE	PRIZEMONEY	TPF	Entry	SPONSOR/RACE TITLE To be Achieved	SPONSOR INCOME £0.00	RIF	Notes	
2.00	3YO	H'CAP	9	9	9	46-60	6	5F	14	£4,400 £400	£6,000	£24	Rewarding Ownership with The Racehorse Owners Association		£400	
2.30	2YO	NOVICE MED AUC	5	5	5	30,000	5	5F	14	£5,600 £400	£6,000	£30	ROA British Stallion Studs EBF Median Auction Novice Stakes	£1,500.00	£400	EBF £1.5k
3.00	4YO+	H'CAP	8	8	13	46-60	6	2M	14	£4,400 £400	£6,000	£24	ROA Owners Jackpot		£400	
3.30	3YO+	H'CAP	8	8	8	71-90	3	7F	12	£13,000 -£52	£12,948	£24	ROA Rewards Members	£4,000.00	£400	
4.00	4YO+	H'CAP	7	7	21	46-60	6	1M	14	£4,400 £400	£6,000	£24	Benefits For ROA Members at roa.co.uk		£400	
4.30	4YO+	SELLER	6	6	5	Claim 12k	5	5F	14	£5,400 £400	£7,000	£29	FRIDGE SPARES WHOLESALE	£460.00	£400	
5.00	4YO+	H'CAP	8	8	10	46-60	6	1M4F	14	£4,400 £400	£6,000	£24	ROA: A voice for Racehorse Owners		£400	
			51	51	71					£4,800 £48,748	£6,000 £55,948			£5,960.00	£2,800.00	
8		Chelmsford High Value (eve)	Actual Runs 18	Budget Runs 19	Actual Runs 19	TUESDAY 23RD JULY							The Lucas Ice Cream Family Raceday	£7,578.00		
RACE TIMES	AGE	RACE TYPE				RATING	CLASS	DISTANCE	PRIZEMONEY	TPF	Entry	SPONSOR/RACE TITLE To be Achieved	SPONSOR INCOME £0.00	RIF	Notes	
2.00	3YO	H'CAP	8	8	9	46-65	6	1M	14	£4,400 £400	£6,000	£24	Like Racing TV on Facebook		£400	£2187.50 sponsorship moved from feb then 5th April following abandonments
2.30	2YO	MAIDEN	5	5	9	OPEN	4	7F	12	£6,500 £400	£6,900	£35	Irish Stallion Farms EBF Maiden Stakes	£0.00	£400	EBF £0k Honest Toun to Present
3.00	3YO+	H'CAP	6	8	10	56-75	5	7F	12	£5,400 £400	£7,000	£29	Follow @racingtv on Twitter		£400	
3.30	2YO	H'CAP	9	9	8	0-85	4	5F	14	£10,400 £400	£12,000	£54	Join Racing TV Now		£400	
4.00	3YO+	H'CAP	6	8	11	51-65	6	5F	14	£4,400 £400	£6,000	£24	racingtv.com		£400	
4.30	4YO+	H'CAP	5	6	13	46-60	6	1M6F	14	£4,400 £400	£6,000	£24	Watch racing TV Now		£400	
5.00	3YO+	WFA	9	9	13	0-50	6	5F	14	£4,400 £400	£6,000	£24	Every Race Live on Racing TV		£400	
			48	53	73					£42,700	£49,900			£0.00	£2,800.00	
9		THIRSK (AFT)	Actual Runs 18	Budget Runs 19	Actual Runs 19	FRIDAY 2ND AUGUST (eve)							The Sponsor Raceday	£7,200.00		
RACE TIMES	AGE	RACE TYPE				RATING	CLASS	DISTANCE	PRIZEMONEY	TPF	Entry	SPONSOR/RACE TITLE To be Achieved	SPONSOR INCOME £0.00	RIF	Notes	
5.30	2YO	NOVICE MED AUC	6	6	5	30,000	5	7F	12	£5,600 £400	£6,000	£30	Irish Stallion Farms EBF Median Auction Novice Stakes	£1,500.00	£400	EBF £1.5k - TBC (Make sure it is Irish Stallion Studs Advert)
6.00	4YO+	H'CAP	9	9	12	56-75	5	7F	12	£5,400 £400	£7,000	£29	Bernard Hunter Mobile Cranes	£840.00	£400	
6.35	2YO	NURSERY H'CAP	6	6	8	0-65	6	5F	14	£4,400 £400	£6,000	£24	Like racing TV on Facebook		£400	
7.10	3YO+	H'CAP	6	8	7	71-90	3	5F	14	£13,000 £0	£13,000	£65	Geoghegans	£2,520.00	£1,200.00	£0.00
7.40	3YO	H'CAP	8	8	6	56-75	5	7F	14	£5,400 £400	£7,000	£29	Atholl Duncan and Friends	£840.00	£400	
8.10	3YO+	H'CAP	9	9	9	46-65	6	5F	14	£4,400 £400	£6,000	£24	Join Racing TV Now		£400	
8.40	4YO+	AMATEUR RIDERS' H'CAP	11	11	9	51-70	5	1M5F	14	£5,400 £400	£7,000	£29	Every Race Live on Racing TV		£400	
			55	57	56					£46,000	£45,000			£5,700.00	£3,600.00	

10		HAYDOCK (EVE)			FRIDAY 9TH AUGUST										The Sponsor Archerfield Cup Raceday		
FIRST RACE	AGE	RACE TYPE	Actual Runs 18	Budget Runs 19	Actual Runs 19	RATING	CLASS	DISTANCE	SF	PRIZEMONEY	TPF	Entry	SPONSOR/RACE TITLE	SPONSOR INCOME	RIF	Notes	
2.10	3YO+	H'CAP	8	8	7	51-70	5	1M1F	14	£6,900 £400	£8,500	£37	To be Achieved Bam Construction Ltd	£0.00 £840.00			
2.40	2YO	CONDITIONS RACE	4	5	4	OPEN	3	5F	14	£13,000 £0	£13,000	£65	EBF Conditions Stakes	£5,000.00	£400 £2,060.00	EBF £5K - <b>EBF FIRST IN RACE TITLE AND SOLE</b>	
3.10	3YO+	H'CAP	7	8	5	61-80	4	5F	14	£8,400 £400	£10,000	£44	Watermans	£1,680.00	£400		
3.40	4YO+	H'CAP	5	7	6	76-95	3	1M6F	14	£20,000 £0	£20,000	£100	GLENRATH FARMS Archerfield Cup The Archerfield Cup	£1,680.00	£2,500.00	Perpetual trophy (To be ordered replica claret jug for owner to give away)	
4.10	3YO+	H'CAP	6	8	8	61-80	4	7F	12	£8,400 £400	£10,000	£44	Edgen Murray	£840.00	£0.00 £400		
4.40	3YO+	H'CAP	5	7	6	46-60	6	5F	12	£4,400 £400	£6,000	£24	Racing TV	£0.00	£400		
5.15	3YO+	H'CAP	10	10	7	46-60	6	1M4F	14	£5,400 £400	£7,000	£29	Miller Homes Limited	£840.00	£400		
			45	53	43					-455 £68,045	£74,500			£10,880.00	£6,560.00		
11					TUESDAY 27TH AUGUST (eve)										The Sponsor Raceday		
RACE TIMES	AGE	RACE TYPE	Actual Runs 18	Budget Runs 19	Actual Runs 19	RATING	CLASS	DISTANCE	SF	PRIZEMONEY	TPF	Entry	SPONSOR/RACE TITLE	SPONSOR INCOME	RIF	Notes	
5.00	2YO	FILLIES MAIDEN AUCTION was supposed to be a seller	6	6	4	Claim 12k	6	7F	12	£4,400	£4,800	£24	Watch RacingTV Now	£0.00	£400		
5.30	2YO	NURSERY	8	8	7	0-65	6	7F	12	£4,400 £400	£6,000	£24	Like RacingTV on Facebook		£400		
6.00	4YO+	H'CAP	5	7	11	46-60	6	7F	12	£3,900 £400	£5,500	£22	Magners GB	£450.00	£400		
6.30	4YO+	H'CAP	10	10	9	51-70	5	1M1F	14	£5,400 £400	£7,000	£29	Boogie in the Morning	£2,000.00	£400		
7.00	4YO+	H'CAP	9	9	12	46-55	6	5F	14	£3,900 £400	£5,500	£22	Watch Racing TV Now		£400		
7.30	3YO	H'CAP	10	10	11	46-60	6	7F	12	£3,900 £400	£5,500	£22	Follow @racingtv On Twitter		£400		
8.00	4YO+	H'CAP	6	7	7	66-85	4	1M4F	14	£8,400 £400	£10,000	£44			£400		
			54	57	61					£37,100	£44,300			£2,450	£2,800		
12		Lingfield £37.75k Catterick £39.5k			WEDNESDAY 28TH AUGUST										The Max Recycle Raceday		
RACE TIMES	AGE	RACE TYPE	Actual Runs 18	Budget Runs 19	Actual Runs 19	RATING	CLASS	DISTANCE	SF	PRIZEMONEY	TPF	Entry	SPONSOR/RACE TITLE	SPONSOR INCOME	RIF	Notes	
1.50	2YO	MAIDEN	9	8	12	OPEN	4	7F	12	£6,700 £400	£7,100	£36	French Duncan Bibby Financial British Stallion Studs EBF	£1,460.00	£400	EBF £1k	
2.20	3YO+	H'CAP	9	8	10	66-85	4	5F	14	£8,400 £400	£10,000	£44	Dorothea Hawthorne	£1,566.00	£400		
2.50	3YO	H'CAP	10	10	9	46-65	6	5F	14	£4,400 £400	£6,000	£24	Catherine and Charlotte Roache	£1,566.00	£400		
3.20	3YO+	FILLIES' & MARES' H'CAP	6	6	8	61-80	4	7F	12	£10,900	£12,500	£57	EBF Stallions Winners	£4,000.00		EBF £4K - <b>EBF EXCLUSIVE RACE TITLE</b>	
3.50	3YO	RR TBC CONDITIONS H'CAP	9	9	9	46-65	6	1M1F	14	£4,400 £400	£6,000	£24	AIUA	£460.00	£400		
4.20	4YO+	H'CAP	9	9	8	46-65	6	2M2F	14	£4,400 £400	£6,000	£24	The Scottish Cambridgeshire Wetherbys	£1,725.00	£400		
4.55	3YO	H'CAP	8	8	6	51-70	5	1M4F	14	£4,900 £400	£6,500	£27	The Scottish Cesarewitch Mr and Mrs Smith	£1,566.00	£400		
			60	58	62					£46,900	£54,100			£12,343.00	£2,800.00		

13		FRIDAY 6TH SEPTEMBER (eve)										The Sponsor Raceday		£4,620.00		
RACE TIMES	AGE	RACE TYPE	Actual Runs 18	Budget Runs 19	Actual Runs 19	RATING	CLASS	DISTANCE	SF	PRIZEMONEY	TPF	Entry	SPONSOR/RACE TITLE	SPONSOR INCOME	RIF	Notes
4.25	3YO+	H'CAP	8	8	6	61-75	5	5F	14	£4,900	£6,500	£27	<b>To be Achieved</b> Donaldson Timber Engineering	£840.00		
		<b>Replace with a 7/9f c6</b>								£400					£400	
5.00	4YO+	H'CAP	12	12	9	51-70	5	1M6F	14	£4,900	£6,500	£27	CALA Homes (East) Ltd	£840.00		
										£400					£400	
5.30	2YO	NOVICE AUCTION	9	9	5	25000 1lb/5k	5	7F	12	£5,100	£5,500	£28	British Stallion Studs EBF	£0.00		EBF £0k
										£400					£400	
6.00	3YO+	H'CAP	7	7	8	66-80	4	7F	12	£8,400	£10,000	£44	St Andrews Timber and Building Supplies	£2,000.00		
										£400					£400	
6.30	3YO+	H'CAP	12	12	12	46-60	6	5F	14	£3,900	£5,500	£22	Join RacingTV Now			
										£400					£400	
7.00	3YO+	H'CAP	8	8	14	46-65	6	1M	14	£4,400	£6,000	£24	Keyline Civils Specialists	£840.00		
		<b>Go 7/9f?</b>								£400					£400	
7.30	3YO	H'CAP	8	8	7	46-65	6	1M4F	14	£4,400	£6,000	£24	Every Race Live on RacingTV			Was made 3yo only by BHA! Go 3yo+
	<b>3YO+</b>	<b>N'castle 4+ 12f c6</b>								£400					£400	
			64	64	61					£39,300	£46,000			£4,520.00	£2,800.00	
15		SATURDAY 14TH SEPTEMBER										The Sponsor Edinburgh Cup Raceday		£8,500.00		
RACE TIMES	AGE	RACE TYPE	Actual Runs 18	Budget Runs 19	Actual Runs 19	RATING	CLASS	DISTANCE	SF	PRIZEMONEY	TPF	Entry	SPONSOR/RACE TITLE	SPONSOR INCOME	RIF	Notes
4.05	2YO	NURSERY	10	10	11	0-65	6	5F	17	£4,400	£6,400	£24	<b>To be Achieved</b> Join Racing TV Now	£0.00		
										£400					£400	
4.40	3YO	H'CAP	7	7	10	71-90	3	2M	17	£40,800	£40,800	£204	The Pommery Champagne Edinburgh Cup (A handicap) (Class 3)		£13,400.00	£2.7k RIF + £10.0k Dev Fund. PM to 6th and AM to 8th. Simon Watts
										£0					£0.00	
5.15	3YO+	H'CAP	24	12	22	46-60	6	7F	12	£4,400	£6,400	£24	<b>The Pommery Champagne Edinburgh Cup (A handicap) (Class 3)</b> JMC Healthcare	£2,500.00	£460.00	
										£400					£400	
5.45	2YO	FILLIES CONDITIONS	4	4	8	OPEN	3	5F	17	£14,145	£14,945	£75	EBF	£5,000.00	£2,760.00	EBF £5k - EBF FIRST IN RACE TITLE AND SOLE SPONSOR IF POSSIBLE. £300 Appearance Money guarantee to 8th place.
										£800					£0.00	
6.15	4YO+	H'CAP	6	8	11	66-80	4	1M	14	£8,400	£10,400	£44	Max's 21st	£460.00		
		<b>Deleted Fillies</b>				<b>was 85</b>				£400					£400	
6.45	3YO	H'CAP	8	8	12	61-80	4	1M1F	14	£10,400	£12,400	£54	Your Conveyancer	£1,500.00		
										£400					£400	
7.15	3YO+	H'CAP	9	9	13	46-55	6	5F	17	£4,400	£6,400	£24	Lothian DAF	£920.00		
						<b>was 65</b>				£400					£400	
			68	58	87					£4,800	£6,000			£10,840.00	£18,160.00	
										£94,545	£103,745					
15		SUNDAY 29TH SEPTEMBER										The Sponsored Honest Toun Family Raceday		£12,000.00		
RACE TIMES	AGE	RACE TYPE	Actual Runs 18	Budget Runs 19	Actual Runs 19	RATING	CLASS	DISTANCE	SF	PRIZEMONEY	TPF	Entry	SPONSOR/RACE TITLE	SPONSOR INCOME	RIF	Notes
2.10	2YO	Pony Racing NOVICE	5	7	6	OPEN	4	7F	12	£6,700	£7,100	£36	<b>To be Achieved</b> Irish Stallion Farms EBF	£1,000.00		EBF £1k
										£400					£400	
2.40	2YO	NURSERY	9	9	9	0-65	6	5F	14	£4,100	£6,000	£23	Every Race Live on RacingTV	£0.00		
										£400					£400	
3.15	3YO+	FILLIES' & MARES' H'CAP	7	10	8	76-95	3	1M	14	£25,000	£25,000	£125	Irish Stallion Farms EBF Scottish Premier Fillies' Handicap	£10,000.00	£1,800.00	EBF £10k - EBF EXCLUSIVE RACE TITLE
										£0						
3.45	3YO+	H'CAP	8	8	7	66-80	4	5F	14	£8,100	£10,000	£43	The Virgin Media Oomph Handicap Stakes	£3,000.00		
		<b>Deleted Confined</b>					<b>was 5</b>			£400					£400	
4.20	3YO+	H'CAP	7	8	14	46-55	6	5F	14	£4,100	£6,000	£23	The Royal Scots Club			
		<b>deleted apprentices clash with Catterick</b>				<b>was 60</b>				£400					£400	
4.55	3YO+	H'CAP	7	10	9	51-70	5	1M	14	£5,100	£7,000	£28	The Royal Regiment of Scotland	£0.00		Royal Scots Perpetual Trophy
	<b>was 3</b>						<b>was 4</b>	<b>was 7f</b>		£400					£400	
5.25	3YO+	H'CAP	5	8	18	46-60	6	1M4F	14	£4,100	£6,000	£23	LG Pharmacy Lynn's Last Gallop	£550.00		
							<b>was 5</b>	<b>was 1M6F</b>		£400					£400	
			48	60	71					£4,500	£6,000			£14,550.00	£4,600.00	
										£64,100	£73,100					

16		MONDAY 14TH OCTOBER										The Sponsor Scottish Flat Racing 2019 Finale				
RACE TIMES	AGE	RACE TYPE	Actual Runs 18	Budget Runs 19	Actual Runs 19	RATING	CLASS	DISTANCE	SF	PRIZEMONEY	TPF	Entry	SPONSOR/RACE TITLE	SPONSOR INCOME	RIF	Notes
1.20	2YO	NURSERY	10	6	6	0-65	6	5F	14	£4,400	£6,000	£24	To be Achieved racingtv.com	£8,000.00		
1.50	3YO+	H'CAP	19	12	12	61-75	5	7F	12	£4,900	£6,500	£27	Like raing TV On Facebook		£400.00	
2.20	3YO+	CONDITIONS	7	5	5	OPEN	3	5F	14	£15,000	£15,000	£75	Breeders Backing Racing EBF Flying Scotsman Conditions Stakes (class 2)	£5,000.00	£2,700.00	EBF £5k. £300 Appearance Money guarantee to 8th place.
2.55	3YO+	H'CAP Remove AMTRS	8	8	8	56-75	5	5F	14	£4,900	£6,500	£27	Follow Racing TV @racingtv On Twitter		£400.00	
3.25	3YO+	H'CAP	9	9	9	81-100 was 86	2	7F	12	£20,000	£20,000	£100	Join RacingTV Now		£2,750.00	
4.00	3YO+	SELLER	10	6	6	WFA	4	1M4F was 1M1F	14	£7,650	£9,250	£40	Every Race Live On Racing TV		£400	
4.30	3YO+	AMTR RIDERS H'CAP Add AMTRS	11	14	14	51-70	5	1M1F was 1M4F	14	£4,900	£6,500	£27	Watch RacingTV Now		£400.00	
			45	60	60					£63,575	£69,750			£5,000.00	£7,450.00	
		Grand Total	905	956					Grand Total	£1,156,697	£1,246,654			£152,463	£126,634.00	
			8.08	8.54												
			56.56	59.75												





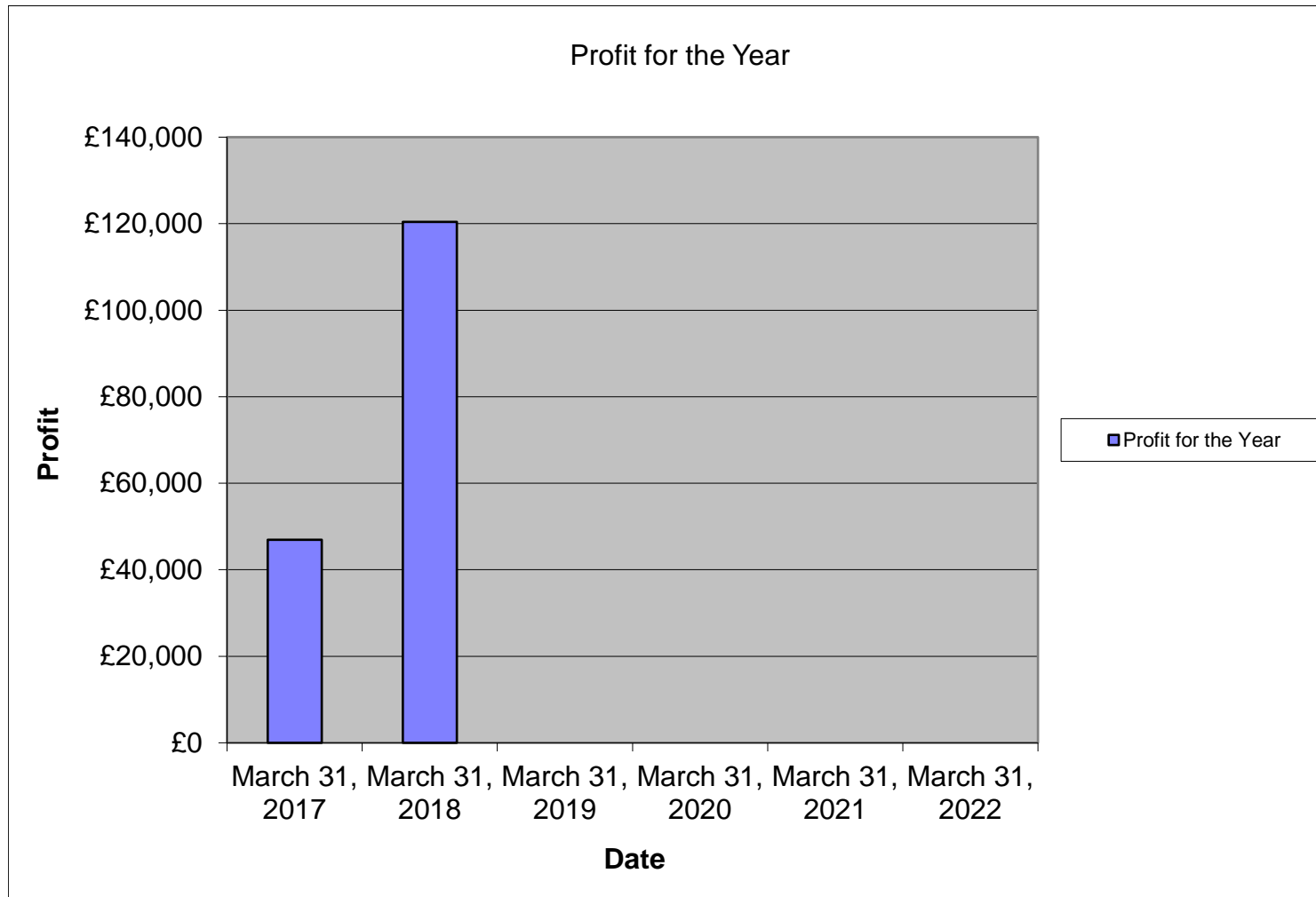
20		Fontwell £38k	Actual Runs 18	Budget Runs 19	Actual Runs 19	MONDAY 9TH DECEMBER							7	The Sponsor Raceday	£1,560.00		
RACE TIMES	AGE	RACE TYPE				RATING	CLASS	DISTANCE	SF	PRIZEMONEY	TPF	Entry	SPONSOR/RACE TITLE To be Achieved	SPONSOR INCOME	RIF	Notes	
12.15	4YO+	COND'N JOCS H'CAP HDLE	8	10		0-120	4	2M4F	15	£6,200 £400	£8,000	£33	racings.com	£0.00	£400		
12.45	4YO+	EBF NH MAIDEN HDLE (Qualifier)	6	6		WFA	4	2M	14	£5,600 £400	£6,000	£30	British Stallion Studs EBF Maiden NH Hurdle Qualifier	£1,000.00	£0	EBF 1k	
1.15	4YO+	NOV H'CAP CHASE	7	8		0-120	4	2M6F	13	£6,200 £400	£8,000	£33	Visit racingtv.com		£400		
1.45	4YO+	H'CAP CHASE	7	6		0-120	4	2M	14	£8,200 £400	£10,000	£43	Introducing racing TV		£400		
2.15	3YO	INTRO JUV NOV HDLE	8	7		WFA	2	2M	14	£17,000 £0	£17,000	£85	Every Race Live On Racing TV		£8,000	£3k RIF and £5k DF	
2.45	4YO+	H'CAP HRDLE	10	8		0-130	3	3M	15	£10,200 £400	£12,000	£53	Like Racing TV On Facebook		£400		
3.15	4YO+	H'CAP CHASE	7	7		0-110	4	3M	14	£6,700 £400	£8,500	£36	Racing TV Profits Returned To Racing		£400		
			53	52	0					£62,500	£69,500			£1,000.00	£10,000		
21		Cheltenham	Actual Runs 19	Budget Runs 20	Actual Runs 20	MONDAY 1ST JANUARY							6	The Betway New Years Day	£20,000.00		
RACE TIMES	AGE	RACE TYPE				RATING	CLASS	DISTANCE	SF	PRIZEMONEY	TPF	Entry	SPONSOR/RACE TITLE To be Achieved	SPONSOR INCOME	RIF	Notes	
12.30	4YO	JUV NOV HURDLE	6	6		WFA	4	2M	14	£7,600	£8,000	£40	Betway First Foot	£0			
12.40	4YO+	H'CAP HDLE	9	9		0-140	3	3M	15	£18,200	£20,000	£93	The First Foot Juvenile Hurdle (Class 3) Betway Hair of the Dog	£5,000	£400		
1.15	4YO+	H'CAP HDLE	9	9		0-140	3	3M	15	£18,200	£20,000	£93	The Hair of the Dog Handicap Hurdle (Class 3) Betway Auld Reekie	£5,000	£3,000		
1.40 ITV	5YO+	H'CAP CHASE	6	7		0-145	2	2M4F	14	£30,000 £0	£30,000	£150	The Auld Reekie Steeple Chase (A Handicap Chase) (Class 2) Betway Hogmaneigh	£5,000	£2,500		
2.15 ITV	4YO+	H'CAP HDLE	7	8		OPEN	2	2M	15	£30,000	£30,000	FREE	Betway Hogmaneigh	£5,000	£2,500		
2.49	4YO+	H'CAP HDLE	9	9		0-110	4	2M3F	15	£8,200	£10,000	£43	The Hogmaneigh Hurdle (A Handicap) (Class 2) Betway Heed your Hunch	£5,000	£400		
3.25	5YO+	H'CAP CHASE	6	7		0-115 was 0-120	4	3M	13	£6,200 £400	£8,000	£33	Betway Casino	£0	£400		
			43	46	0					£101,800	£106,000			£20,000.00	£7,100.00		
15		Track Hereford	Actual Runs 19	Budget Runs 20	Actual Runs 20	FRIDAY 3RD JANUARY							6	The Betway Raceday	£1,000.00		Notes
RACE TIMES	AGE	RACE TYPE				RATING	CLASS	DISTANCE	SF	PRIZEMONEY	TPF	Entry	SPONSOR/RACE TITLE To be Achieved	SPONSOR INCOME	RIF	Notes	
12.15		Potential Division											Betway Novice Handicap Hurdle	£0.00			
12.15	4YO+	MAIDEN HDLE	11	10		WFA	4	3M was 2M3F	14	£5,600 £400	£6,000	£30	Betway Maiden Hurdle		£400		
1.25	5YO+	NOV H'CAP CHASE	6	6		0-105 was 0-120	4	2M4F	14	£6,200 £400	£8,000	£33	Betway Novice Handicap Chase		£400		
1.55	4YO+	H'CAP HDLE	12	12		0-100 was 0-105	5	2M	15	£4,200 £400	£6,000	£23	Betway Heed Your Hunch Handicap Hurdle		£400		
2.25	4YO+	H'CAP HDLE	8	8		0-120	4	3M	15	£8,200 £400	£10,000	£43	Betway Handicap Hurdle		£400		
3.00	5YO+	BEGINNERS' CHASE WAS H'CAP	5	5		OPEN was 0-135	4	2M6F was 2M	14	£6,200 £400	£8,000	£33	Betway Handicap Chase		£400	EB - Perpetual bronze ( Contact Jane Gillies to present)	
3.25	4YO+	OPEN NH FLAT	9	9		WFA	4	2M	14	£5,000 £0	£5,000	£25	Betway Open NH Flat Race		£0		
			51	50	0					£37,400	£43,000		£0	£0.00	£2,000		

23		Track Chap'w £40.5k Ling £39k			Actual	Budget	Actual	FRIDAY 17TH JANUARY					6	The Betway Rabble Burns Day Raceday			£1,000.00		
RACE TIMES	AGE	RACE TYPE	Actual	Runs	Runs	RATING	CLASS	DISTANCE	SF	PRIZEMONEY	TPF	Entry	SPONSOR/RACE TITLE	SPONSOR	RIF	Notes			
			19	20	20								To be Achieved	INCOME					
12.40	4YO+	H'CAP HDLE	0	8		0-115	4	2M3F	15	£5,700	£7,500	£31	Betway Heed Your Hunch	£0.00					
						was 0-105				£400					£400				
1.15	5YO+	NOV H'CAP CHASE	0	10		0-105	4	2M7F	14	£6,200	£8,000	£33	Betway Novice Handicap Chase						
						was 0-120				£400					£400				
1.45	4YO+	MARES NOV HDLE	0	7		WFA	4	2M	14	£5,600	£6,000	£30	Betway Cosmic Case Mares' Only Novices Hurdle (Class 5)						
										£400			The Cosmic Case Mares' Only Novices Hurdle (Class 5)		£400				
2.20	4YO+	H'CAP HDLE	0	7		0-130	3	2M	15	£9,700	£11,500	£51	Betway Handicap Hurdle						
										£400					£400				
2.55	4YO+	H'CAP CHASE	0	7		0-100	5	2M4F	14	£4,700	£6,500	£26	Betway Handicap Chase						
										£400					£400				
3.30	4YO+	OPEN NH FLAT	0	8		WFA	4	2M	14	£5,000	£5,000	£25	Betway Open NH Flat Chase						
										£0					£0				
4.00	4YO+	H'CAP HDLE	0	0		0-110	4	2M7F	15	£0	£0	£0			£0				
										£0					£0				
			0	47	0					£38,900	£44,500			£0.00	£2,000.00				
24		Sand'n & Weth'y & Leopd'n			Actual	Budget	Actual	SATURDAY 1ST FEBRUARY					7	The bet365 Edinburgh National Raceday			£21,000.00		
RACE TIMES	AGE	RACE TYPE	Actual	Runs	Runs	RATING	CLASS	DISTANCE	SF	PRIZEMONEY	TPF	Entry	SPONSOR/RACE TITLE	SPONSOR	RIF	Notes			
			19	20	20								To be Achieved	INCOME					
12.55	5YO+	NOVICE CHASE	0	5		WFA	3	2M4F	13	£11,200	£13,000	£58	bet365 Frodon Novices' Steeple Chase (Class 3)	£0.00	£2,000	RC AM top up @ £350. bet365 375k invoice 3 months before			
										£400			The Frodon Novices' Steeple Chase (Class 3)		£0				
1.30	4YO+	VETERANS' CHASE	0	12		0-125	3	2M6F	14	£15,700	£17,500	£81	bet365 Auld Yin Veterans' Steeple Chase		£800				
										£400			The Auld Yin Steeple Chase (Class 3)		£0				
2.05 ITV4	4YO+	H'CAP HDLE	0	8		OPEN	2	2M	15	£30,000	£35,000	FREE	bet365 Scottish County Hurdle (A Handicap) (Class 2)	£0.00	£3,000				
		Free Entry for horses rated <130								£0			The Scottish County Hurdle (A Handicap) (Class 2)		£0				
2.45	5YO+	H'CAP CHASE	0	6		0-150	2	2M	14	£20,000	£20,000	£100	bet365 Scottish Champion Steeple Chase (A Handicap) (Class 3) (For The Bowes-Lyon Trophy)	£0.00	£800	RC AM top up @ £350. Bowes-Lyon perpetual trophy			
										£0			The Scottish Champion Steeple Chase (A Handicap) (Class 3) (For The Bowes-Lyon Trophy)		£400				
3.15 ITV4	5YO+	H'CAP CHASE	0	14		0-150	2	4M	16	£40,000	£45,000	£200	bet365 Edinburgh National (A Handicap Chase) (Class 2)	£20,000.00	£2,500				
										£0			The Edinburgh National (A Handicap Chase) (Class 2)		£0				
3.50	5YO+	H'CAP HDLE	0	12		0-115	4	2M	15	£7,700	£9,500	£41	bet365	£0.00	£400				
										£400					£400				
4.25	5YO+	OPEN HUNTERS' CHASE	0	6		WFA	4	3M2F	14	£6,000	£6,000	£30	bet365 Scottish Foxhunter Steeple Chase (A Hunter Chase) (Class 3)	£0.00					
										£0			The Scottish Foxhunter Steeple Chase (A Hunter Chase) (Class 5)		£0				
			0	63	0					£131,800	£146,000			£20,000.00	£9,900.00				
25		Leopardstown			Actual	Budget	Actual	SUNDAY 2ND FEBRUARY					7	The Scottish Cheltenham Trials Day			£20,000.00		Notes
RACE TIMES	AGE	RACE TYPE	Actual	Runs	Runs	RATING	CLASS	DISTANCE	SF	PRIZEMONEY	TPF	Entry	SPONSOR/RACE TITLE	SPONSOR	RIF				
			19	20	20								To be Achieved	INCOME					
1.25	4YO+	NOVICES' H'CAP CHASE	0	8		0-120	4	3M	14	£7,800	£10,000	£41	bet365	£0.00					
								was 2M4F		£400					£400				
1.55	4YO	JUV HURDLE (LISTED)	0	5		WFA	1	2M	14	£28,200	£35,000	£141	bet365 Scottish Triumph Hurdle Trial (A Juvenile Hurdle) (Class 2)	£5,000.00	£3,000				
										£0			The Scottish Triumph Hurdle Trial (A Juvenile Hurdle Race) (Class 1 Listed Race)		£0				
2.25	5YO+	NOVICE HURDLE	0	5		WFA	2	2M	14	£20,000	£20,000	£100	bet365 Supreme Scottish Trial Novices Hurdle (A Novices' Hurdle Race) (Class 2)	£5,000.00	£3,000	race title must not have "the" prefixing Sky Bet. Sky Bet must always appear as two words. RC pays AM top up @ £350			
										£0			The Scottish Supreme Novices' Hurdle Trial (Class 2)		£0				
2.55	4YO+	NOVICE HURDLE	0	6		WFA	2	3M	14	£20,000	£20,000	£100	bet365 Scottish Novice Stayers' Trial (Class 3)		£3,000	RC pays AM top up @ £350			
										£0			The Scottish Novice Stayers' Trial (A Novices' Hurdle Race) (Class 3)		£0				
3.25	4YO+	PERTEMPS H'CAP HDLE QUALIFIER	0	12		OPEN	2	3M2F	15	£20,000	£20,000	£100	Pertemps Network	£5,000.00	£3,000	Increases to £5k in 2019 (final year of contract).			
										£0					£0				
3.55	5YO+	H'CAP CHASE	0	9		0-120	4	3M3F	14	£9,800	£12,000	£51	bet365	£0.00	£400				
										£400					£400				
4.25	4YO+	OPEN NH FLAT	0	8		WFA	4	2M	14	£5,000	£5,000	£25	bet365	£0.00	£0				
										£0					£0				
			0	53	0					£111,600	£122,000			£15,000.00	£12,800				

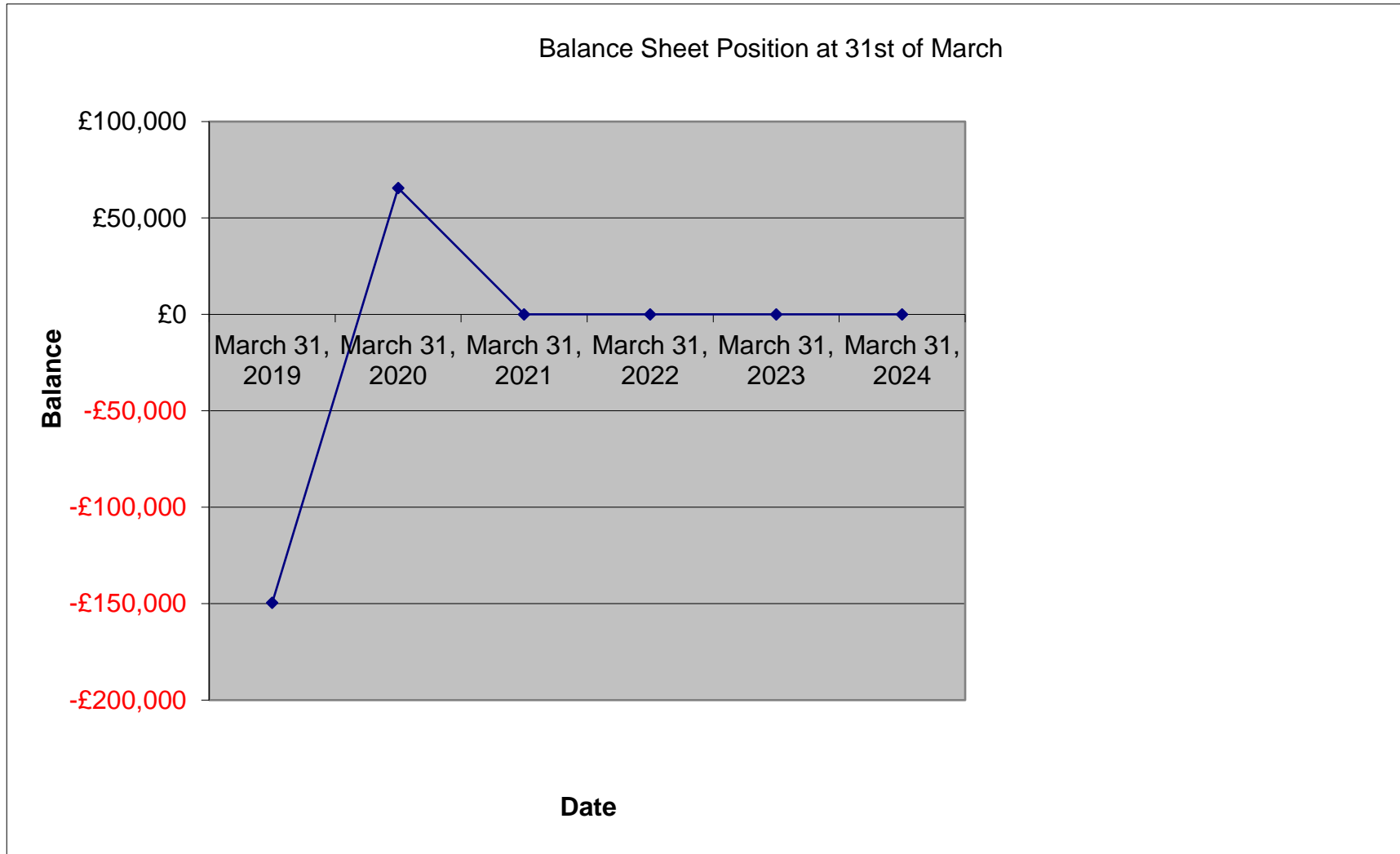
26		Track Wincanton £40.5k			WEDNESDAY 26TH FEBRUARY										7		The Sponsor Raceday		
RACE TIMES	AGE	RACE TYPE	Actual Runs 19	Budget Runs 20	Actual Runs 20	RATING	CLASS	DISTANCE	SF	PRIZEMONEY	TPF	Entry	SPONSOR/RACE TITLE To be Achieved		SPONSOR INCOME	RIF	Notes		
2.10	5YO+	H'CAP CHASE	7	8		0-100	5	2M4F was 2M	14	£4,700 £400	£6,500	£26			£3,900.00 £0.00				
2.40	4YO+	MAIDEN HDLE	7	8		WFA	4	2M3F	14	£5,600 £400	£6,000	£30				£400			
3.10	4YO+	H'CAP HDLE	8	8		0-120 was 105	4	3M	15	£6,200 £400	£8,000	£33				£400			
3.40	5YO+	NOV H'CAP CHASE	4	6		0-105 was 120	4	2M7F	14	£6,200 £400	£8,000	£33				£400			
4.10	4YO+	H'CAP HDLE	9	9		0-115 was 120	4	2M	15	£6,200 £400	£8,000	£33				£400			
4.40	5YO+	GRASSROOTS HUNTERS' CHASE	6	8		WFA	4	3M	14	£6,000 £0	£6,000	£30				£400			
5.10	4YO+	MARES ONLY H'CAP HURDLE	8	8		0-105	4	2M3F	15	£5,700 £400	£7,500	£31				£0			
			49	55	0					£43,000	£50,000			£0.00	£2,400				
27															7		The Sponsor Raceday		
RACE TIMES	AGE	RACE TYPE	Actual Runs 19	Budget Runs 20	Actual Runs 20	RATING	CLASS	DISTANCE	SF	PRIZEMONEY	TPF	Entry	SPONSOR/RACE TITLE To be Achieved		SPONSOR INCOME	RIF	Notes		
2.00	4YO+	MAIDEN HURDLE	11	8		WFA	4	2M1F	14	£0 £0	£0	£0				£0			
2.30	5YO+	NOV H'CAP CHASE	6	6		0-120	4	2M1F	14	£0 £0	£0	£0				£0			
3.05	5YO+	H'CAP CHASE	6	6		0-150	4	2M4F	14	£0 £0	£0	£0				£0			
3.35	4YO+	H'CAP HDLE	4	8		0-125	3	2M3F	15	£0 £0	£0	£0				£0			
4.10	5YO+	H'CAP CHASE	14	8		0-100	5	2M7F	14	£0 £0	£0	£0				£0			
4.40	4YO+	H'CAP HDLE	7	8		0-120	4	2M1F	15	£0 £0	£0	£0				£0			
5.10	5YO+	H'CAP HDLE	6	8		0-100	5	2M3F		£0 £0	£0	£0				£0			
			54	52	0					£0	£0			£0.00	£0				
28		Lingfield & Newbury			FRIDAY 20TH MARCH										7		The Sponsored Go North Racing Festival		
RACE TIMES	AGE	RACE TYPE	Actual Runs 19	Budget Runs 20	Actual Runs 20	RATING	CLASS	DISTANCE	SF	PRIZEMONEY	TPF	Entry	SPONSOR/RACE TITLE To be Achieved		SPONSOR INCOME	RIF	Notes		
2.10	4YO+	JUVENIL H'CAP HDLE	NA	12		OPEN	2	2M1F		£35,000 £0	£35,000	£175	THE NORTHERN LIGHTS SERIES JUVENILE FINAL			£20,000 £0	17k Dev Fund + 3k RIF		
2.40	5YO+	H'CAP CHASE	6	8		0-100	5	2M4F		£6,200 £400	£8,000	£33				£400			
3.05	5YO+	H'CAP HDLE was NOVICE H'CAP HDLE	NA	14		OPEN	2	2M1F 2M3F		£33,200 £400	£35,000	£168	THE NORTHERN LIGHTS TWO MILE HURDLE SERIES FINAL			£18,000 £0	15k Dev Fund + 3k RIF		
3.35	5YO+	MARES' H'CAP HDLE was NOVICE H'CAP CHASE	NA	14		OPEN	2	2M4F		£33,200 £400	£35,000	£168	THE NORTHERN LIGHTS MARES' 2M4F FINAL			£20,000 £0	15k Dev Fund + 5k RIF		
4.10	5YO+	H'CAP HDLE was NOVICE H'CAP HURDLE	NA	14		OPEN	2	3M 4 2M1F		£33,200 £400	£35,000	£168	THE NORTHERN LIGHTS STAYERS' HURDLE SERIES FINAL			£18,000 £0	15k Dev Fund + 3k RIF		
4.45	5YO+	H'CAP CHASE was NOVICE H'CAP HURDLE	NA	8		0-110	4	3M		£6,200 £400	£8,000	£33				£0 £400			
5.15	4, 5 & 6YO	OPEN INTERMEDIATE NH FLAT RACE Delete Mares	7	8		WFA	4	2M1F		£5,000 £0	£5,000	£25				£0 £0			
			13	78	0					£154,000	£161,000			£5,000.00	£76,800				
												Total Sponsorship To Be Achieved		£5,000.00	£63,840	£127,800			
GRAND TOTAL			389	648	124					£762,200	£886,100								
Average per race			4.9241	8.20253	1.5696														
Average per fixture			32.417	54	10.333														



<b>MUSSELBURGH RACECOURSE FINANCIAL SUMMARY 2019-2020</b>		
<b>(incl Maintenance &amp; Essential Capex Development</b>		
	Previous Year Actual 31/3/2019	Year 1 Budget 31/3/2020
<b>Balance Sheet Position at Start of Year (1st April)</b>	<b>£187,317</b>	<b>-£149,600</b>
<b>Add</b> Profit/Loss for Year	£46,947	£120,438
<b>Less</b> Capital Expenditure	£31,558	£10,034
Cash inflow/outflow	£15,389	£110,404
<b>Balance Sheet Position at Year End (31st March)</b>	<b>£202,706</b>	<b>-£39,196</b>
<b>Less</b> Exceptional Costs - Tender Process and Legal Fees	£352,306	£45,274
<b>Add</b> Sale of Assets	£0	£150,000
<b>Balance Sheet Position at Year End (31st March)</b>	<b>-£149,600</b>	<b>£65,530</b>



Profit for the Year	March 31, 2017	March 31, 2018	March 31, 2019	March 31, 2020	March 31, 2021	March 31, 2022
Profit for the Year	46947	120438	#REF!	#REF!	#REF!	#REF!



Reserve Fund at 31st of March	March 31, 2019	March 31, 2020	March 31, 2021	March 31, 2022	March 31, 2023	March 31, 2024
Reserve Fund at 31st of March	-£149,600	£65,530	#REF!	#REF!	#REF!	#REF!

Essential Capex Development Programme 2017-27															
PROJECT	Previous Year Year to 31/3/2019	Year 1 Budget Year to 31/3/2020	Expenditure to-date Year to 31/3/2020	Year 1 Forecast Year to 31/3/2020	Year 2 Forecast Year to 31/3/2021	Year 3 Forecast Year to 31/3/2022	Year 4 Forecast Year to 31/3/2023	Year 5 Forecast Year to 31/3/2024	Year 6 Forecast Year to 31/3/2025	Year 7 Forecast Year to 31/3/2026	Year 8 Forecast Year to 31/3/2027	Year 9 Forecast Year to 31/3/2028	Year 10 Forecast Year to 31/3/2029	Year X Forecast	
<b>Buildings</b>															
Repair of Parade Ring Steps and new disabled viewing area for Parade Ring					£20,000										
Refurbish Links Pavilion Toilets and Champagne Bar						£20,000									
Purchase Additional TVs						£10,000									
Major Paintwork (5 years )					£10,000			£10,000			£10,000				
Re-surface Grandstand Tarmac							£70,000								
Refurbish the turnstiles						£20,000									
Refurbish Links Cafe							£20,000								
Upgrade Tills - QS + grandstands (what do HP own?)							£20,000								
Upgrade TVs (2012-13. 10 years)							£20,000								
Refurbishment of QS (2010. 12 years)								£100,000							
Upgrade Turnstiles									£80,000						
New Owners & Trainers Facility															£1,500,000
Refurbish Granstand & Lothian Suite															£500,000
Purchase Cottage															
New Grandstand on Loretto Lawn															
<b>Grounds</b>															
Landscaping Foodcourt	£29,718	£10,000	£10,000	£10,000											
Landscaping Lawn Areas								£85,000							
Upgrade to PA system					£20,000										
Car Park upgrades - signage, fencing and landscaping					£20,000										
Tarmac racetrack inner Access Road						£80,000									
Power Project															
Final Furlong Signage									£30,000						
<b>Racetrack</b>															
Transit Vehicle (SK52 ZBE 2002. 2nd hand purchase in 2015)						£5,000									
Pick-up (DU55 GUG 2006. 2nd hand purchase in 2017)											£5,000				
Verti-drainer (2007. 2nd hand purchase in 2011)												£12,000			
Irrigator 1 (1999)															
Irrigator 2 (2010. New purchase)						£45,000									
Irrigator 3 (2015. New Purchase)										£45,000					
Utility Vehicle (SF65 JFJ 2016. New purchase)											£15,000				
50HP Kubota 1 utility tractors (SN16 CAX 2016. New purchase)											£20,000				
50HP Kubota 2 utility tractors (SN16 CBX 2016. New purchase)											£20,000				
Kubota Loader fits both 50HP tractors															
33 HP Utility Tractor John Deere + mower + loader (SN10 FSH 2010. New purchase)							£20,000								
65 HP Utility Tractor John Deere + loader (SN11 ERZ 2011. New purchase)							£25,000								
Fork Lift (2006. 2nd hand purchase in 2012)						£6,000									
Ride on Mower Jacobssen (2000. 2nd hand purchase in 2005)					£50,000										
Road Sweeper (AE56 JFX 2006. 2nd hand purchase 2011)						£12,000									
Mounted lawn mower Isikei (2006)					£8,000										
Stables Suction Vehicle (2008)													£45,000		
Kanga Kid + attachments (2014)													£14,000		
Trailers x 6															
Upgrade Irrigation System (pumps etc) (2012)	£2,890						£10,000								
Running Rail Front Straight (2014)											£15,000				
Running Rail Back Straight									£15,000						
Frost Sheets															
Tarmac & rubber stables horsewalk															
New back straight & bottom bend															
<b>Office</b>															
Office IT equipment					£20,000	£3,000	£3,000	£3,000	£3,000	£3,000	£3,000	£3,000	£3,000	£3,000	
Upgrade website and ticketing system IT Equipment (server every 5 years)					£3,000	£3,000	£3,000	£3,000	£3,000	£3,000	£3,000	£3,000	£3,000	£3,000	
IT Replace Zebra Printer (2016 - 5 years)							£5,000								
Office Extension					£15,000										
Upgrade Website & Ticketing System (2017. 5years)								£50,000						£50,000	
<b>Extras</b>															
Racecard Unit	£5,800														
Purchase Disabled persons transporters (£10k each)	£4,650				£5,000										
Purchase Disabled scooters (single internal)															
Electronic Number Board - Parade Ring (2012. 10 years)															
02 WIFI															
Professional Fees															
<b>Funding and income</b>															
Machinery and Equipment Dispersal	-£11,500														
Grants and Contributions (Scottish Enterprise, BHA Racing Foundation & HPL catering capex contribution)															
<b>TOTAL</b>	<b>£31,558</b>	<b>£10,000</b>	<b>£10,000</b>	<b>£10,000</b>	<b>£171,000</b>	<b>£204,000</b>	<b>£196,000</b>	<b>£266,000</b>	<b>£116,000</b>	<b>£51,000</b>	<b>£91,000</b>	<b>£18,000</b>	<b>£115,000</b>	<b>£2,000,000</b>	



**REPORT TO:** Musselburgh Associated Racing Committee  
**MEETING DATE:** 7 January 2020  
**BY:** Depute Chief Executive (Resources and People Services)  
**SUBJECT:** Procurement / General Update

---

6

## **1 PURPOSE**

- 1.1 To provide an update to the Committee regarding the Procurement Process and other related matters.

## **2 RECOMMENDATIONS**

- 2.1 It is recommended that the committee:
- i. notes the position on regarding the proposed handover date to Chester Racecourse;
  - ii. notes the position on TUPE; and
  - iii. delegates to the Racecourse Secretary to ensure that there is a smooth handover to Chester Racecourse to implement any reasonable steps required to implement same.

## **3. BACKGROUND**

- 3.1 Following completion of the tender process Chester Racecourse was announced as the preferred tenderer. At the point of preparing this report the contract documentation is in the process of being finalised between Chester Racecourse and East Lothian Council.
- 3.2 In terms of the Agreement we are working towards a target handover date of 1 March 2020 and in any event no later than end of 2019/20 financial year. The British Horse Racing Authority has been consulted on this and have now issued a Licence for Musselburgh Racecourse which is in keeping with that timeframe.
- 3.3 In preparation for the target transfer on 1 March 2020 the TUPE consultation with the racecourse employees has commenced. This, as

previously approved, is being supported by the racecourse solicitors Harper MacLeod.

- 3.4 Following the handover to Chester Racecourse MRAC will no longer be deemed to operate Musselburgh Racecourse and the Minute of Agreement between the Council and Lothian Racing Syndicate shall terminate.

#### **4. POLICY IMPLICATIONS**

- 4.1 There are no policy implications relating to this report.

#### **5. INTEGRATED IMPACT ASSESSMENT**

- 5.1 The subject of this report does not affect the wellbeing of the community or have a significant impact on equality, the environment or economy.

#### **6. RESOURCE IMPLICATIONS**

- 6.1 Financial - there may be additional financial costs arising from the transfer of the operation of the Racecourse to Chester Racecourse.
- 6.2 Personnel - it is envisaged that all employees will be in scope to transfer to Chester Racecourse under TUPE legislation
- 6.3 Other – none.

#### **7. BACKGROUND PAPERS**

- 7.1 None.

<b>AUTHOR'S NAME</b>	Carlo Grilli
<b>DESIGNATION</b>	Service Manager – Legal & Procurement
<b>CONTACT INFO</b>	x7770
<b>DATE</b>	24 December 19