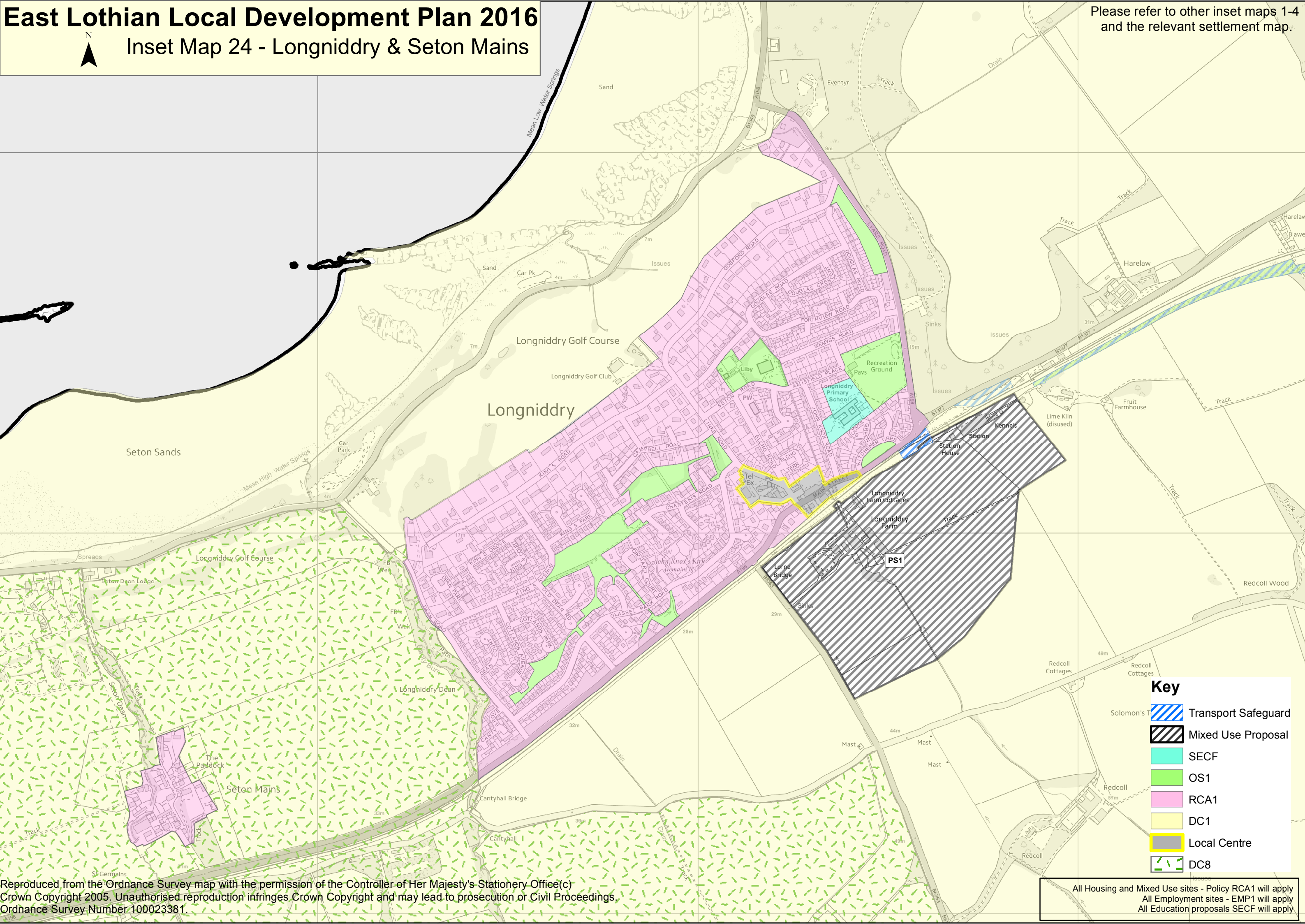


# East Lothian Local Development Plan 2016




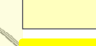


## Inset Map 24 - Longniddry & Seton Mains



Please refer to other inset maps 1-4 and the relevant settlement map.



### Key

-  Transport Safeguard
-  Mixed Use Proposal
-  SECF
-  OS1
-  RCA1
-  DC1
-  Local Centre
-  DC8