

Musselburgh Area Partnership



**the local voice of community planning
across the Musselburgh wards**

Musselburgh Area Partnership

- Musselburgh Area Partnership was formed in March 2014
- Now has a membership of 26 - representing a wide range of groups and interests across the Area
- ** (Since the start or this year?) Area Partnership meetings and a range of sub-groups as we have worked toward producing a draft Area Plan that was adopted in January 2016
- In June 2015 the Musselburgh Area Partnership elected Chris Knights as Chair, Iain Clark took over as acting chair in June 2016

The East Lothian Plan

The East Lothian Plan is the overarching 10 year strategic plan for East Lothian

- **1 overarching priority** – to reduce the inequalities across and within our communities
- **10 high-level Outcomes** - which together provide a clear vision for East Lothian

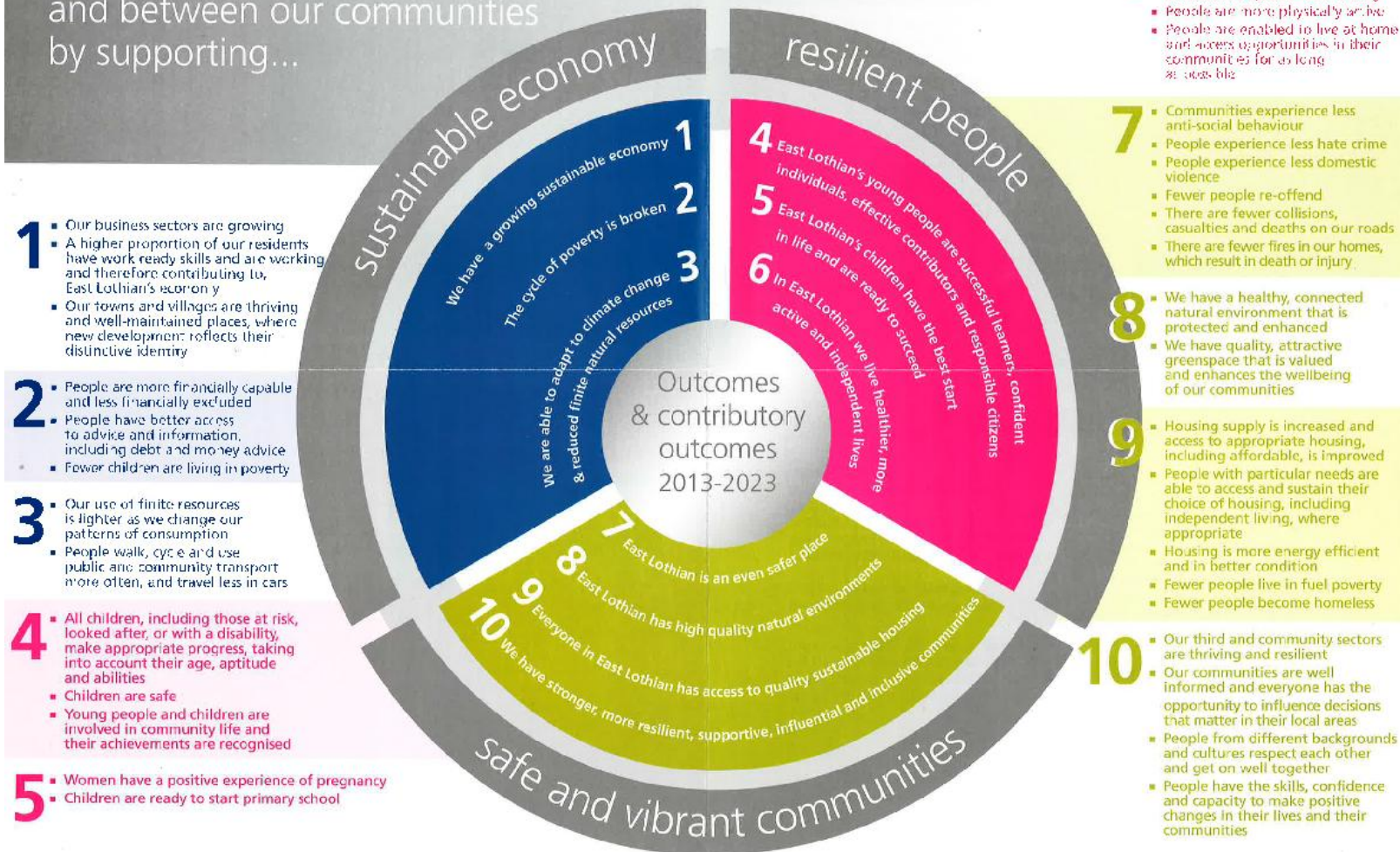


The East Lothian Plan

Our overarching priority:

to reduce inequalities both within and between our communities by supporting...

East Lothian Partnership



East Lothian Partnership



The East Lothian Partnership brings together senior representatives from the public, community, third and private sector.

The East Lothian Partnership:

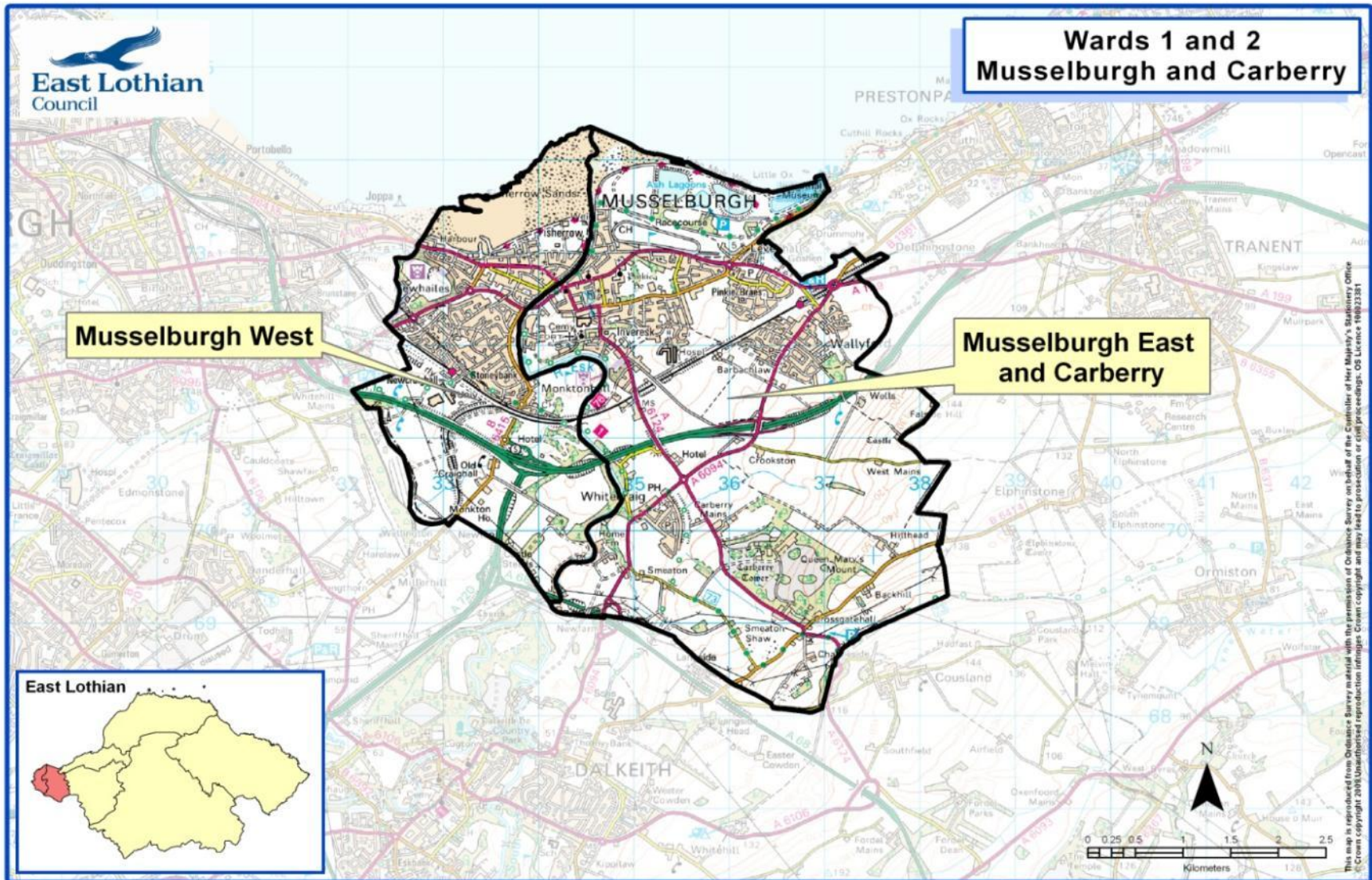
- is responsible for community planning in East Lothian
- is the governing body
- is responsible for delivering the **East Lothian Plan**

Purpose of Area Partnerships

Area Partnerships have been established as the local voice of community planning in East Lothian

- Area Partnerships strengthen links between communities, area-based services and **East Lothian Partnership**.
- They provide a way for local communities to contribute to the outcomes in the **East Lothian Plan** and influence service planning and delivery in their area.

Musselburgh Area Partnership



Who is representing Musselburgh?

- Musselburgh & Inveresk Community Council
- Wallyford Community Council
- Whitecraig Community Council
- The 6 Musselburgh elected members from East Lothian Council
- Windsor Park and Oldcraighall Tenants & Residents Associations
- Campie, Pinkie St Peter's and Stoneyhill Primary Schools Parent Councils
- Musselburgh Grammar School Parent Council
- Musselburgh Community Sports Hub
- Musselburgh Conservation Society
- Musselburgh Council of Churches
- Queen Margaret University
- Bridges Project
- Musselburgh Grammar Pupil Council
- Support from the Start, Musselburgh
- Friends of Musselburgh Links
- Fisherrow Waterfront Group

Role of Area Partnerships

- Develop an Area Plan based on a shared vision for the area using evidence from a variety of sources;
- Monitor the delivery of the Area Plans and report to the wider community on impact each year;
- Assist in determining how resources are allocated in their area according to Area Plan priorities;
- Act as a key point of contact for services to consult and engage with communities on the delivery and improvement of local services.

Support provided to Area Partnerships

Area Manager

- Develop-Monitor-Implement Area Plan actions
- Support the Chair
- Provide Advice and Support
- Lead on Projects
- Manage the Devolved Budgets (£150,000 on Roads and Amenity Services, £100,000 General Services and £100,000 for Education Initiatives)
- Central point of contact
- Help the Area Partnership to influence wider service planning and delivery in the long term.

Musselburgh

- Carberry
- Cousland
- Fisherrow
- Inveresk
- Levenhall
- Monktonhall
- Newhailes
- Old Craighall
- Stoneybank
- Wallyford
- Whitecraig



Members

The individuals, community groups and organisations that make up this Area Partnership



Musselburgh Area Plan

Details the shared vision for the area



Ward Profile

Musselburgh by Numbers: Provides statistics, facts and general information about the ward area



Meetings, Minutes and Papers

Documents and dates of previous and upcoming meetings



Related items

[Related Downloads](#) [Related News](#)



- // [Contact details](#)
- // [Complaint or comment](#)
- // [Ask us a question](#)
- // [Opening hours](#)
- // [Location](#)

East Lothian Council, John Muir House
Driveway Park, Haddington East Lothian
EH41 3AA

[Jump to the top](#)

East Lothian Council © 2019

[Terms and disclaimer](#) // [Accessibility statement](#) // [Website statistics](#) // [Site map](#) // [News RSS](#)

Lovingly designed and powered by [Jedui](#) Content Management.

Follow us on Twitter



Area Plans

- based on a shared vision for the area using evidence from the Area Profile and local intelligence;
- will be strategic plans - identifying actions that will have a local impact on achieving the outcomes set out in the East Lothian Plan
- Are not just community 'wish-lists' but will contain agreed actions that are intended to be implemented;
- Will be delivered by service providers and involving local people

Musselburgh Area Plan

– working towards a sustainable local economy

- 1. Increasing investment in local infrastructure and facilities** in a way that meets the needs of locals, enhances the area's unique features and brings more people to the area.
- 2. Reducing traffic congestion** in Musselburgh to ensure it is easily accessed by locals and visitors alike and overall a more pleasant and enjoyable place to live, work, and be.
- 3. The distinct needs and identities of villages and localities** within the wards is recognised and their environments are enhanced

Musselburgh Area Plan

– working towards a sustainable local economy

Some of the things we have done to achieve these goals has include:

- Upgrading this path to make it wheelchair accessible and cycle friendly





In Whitecraig



Musselburgh
Area Partnership



In Wallyford we have plans to upgrade this footway



FISHERROW HARBOUR AND WATERFRONT AREA FEASIBILITY STUDY CONSULTANCY SERVICES

Document Ref: CON-16-101







Long List of Actions

Musselburgh Area Partnership

December 2015



East Lothian on the Move

The route to smarter travel

Mussel

Musselburgh artwork - *Identity and Reflection*

The Proposal.

I am proposing to make a large mussel shell out of stainless steel with inlaid bronze, 12 feet high and 6 feet wide.

Memory.

Each mussel shell is unique, its shape and marks on the surface a result of the creature's history and environment. On the outside of the mussel's shell we can see how it has grown, where other creatures have fastened themselves to it, and scuff marks made as the tide has moved it around. The shell bears its scars. Similarly, the shell of the sculpture will depict aspects of Musselburgh's history. The viewer will find inlaid within the exterior side of the shell bronze castings showing images referring to the town's past. These glimpses of the past will be like fossils or found fragments; the viewer will see images of agriculture, people, connections to the sea, the river, the Romans and the more recent industries. The connections between these images will remain open to interpretation by the viewer.

And Reflection.

The inside of the mussel shell is the opposite of the shell's exterior; smooth and pearlescent.

This face of the sculpture will be mirror polished and will reflect whatever stands before it. The site for the works is on either an arrival or destination point in the town.

These two aspects of the shell, the *Memory* and the *Reflection*, I see as strong metaphors for a work which interprets the history of the town and also offers a reflection of how we view the town now.

I wanted to design a work which has two sides to it, which gives an open-ended story of the town which can be interpreted in many different ways. The reflection aspect of the work also has many meanings; it can be self-reflection or thinking of the history of the town. It could be seen as referring to water and it can literally reflect what it is facing.

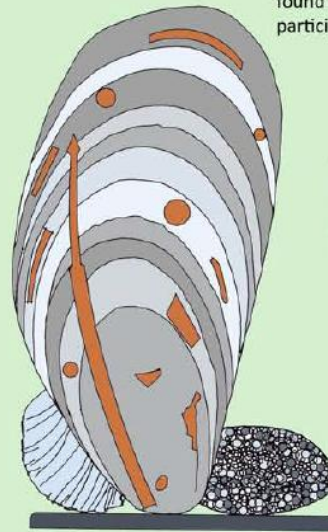
Reference images.

These are some examples of references to Musselburgh's history, stories and industries which may be included in the main body of the sculpture as cast bronze inlays. Research within the community will further add to the range of images which may be used.

The sculpture will be made out of marine grade 316 stainless steel.

Inset into the outer surface of the shell will be bronze castings depicting images from Musselburgh's history.

These images created and found through community participation.



The interior of the mussel shell would be of polished stainless steel. The 'Reflective' element of the artwork.



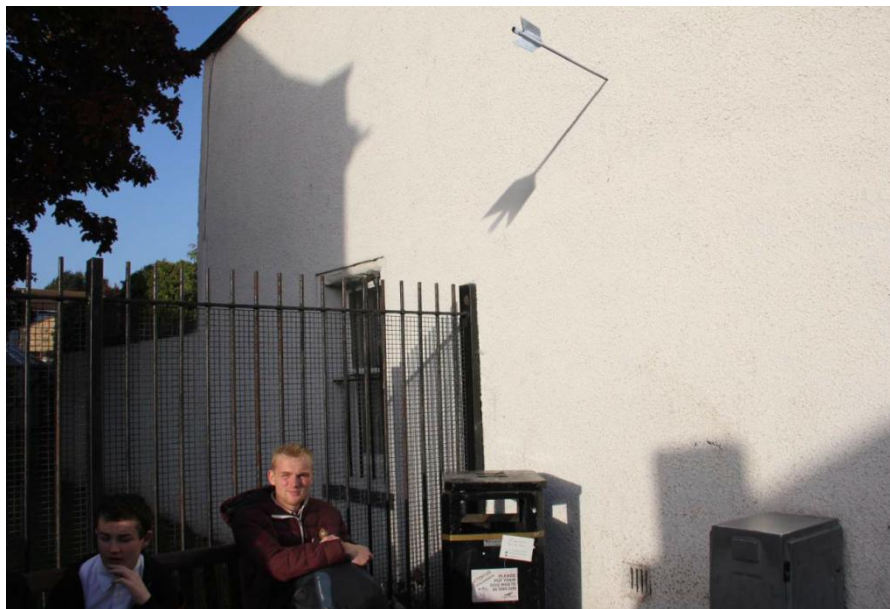
Material samples.

These images show examples of stainless steel and bronze from previous works.

The stainless steel can be welded and polished in different ways to give a variety of textures and finishes. The bronze inlays may be cast from artefacts as well as from patterns made in the studio or by local people in artist-led workshops on the theme of the sculpture.



The Archer



Musselburgh Area Plan

– supporting people to live fulfilling lives

4. Building an **achieving culture** across the ward that will improve attainment and aspiration levels for people of all ages.
5. Ensuring the Musselburgh community has the knowledge, opportunity and tools at-hand to make **healthy lifestyle choices** and have more control over their health outcomes.

Musselburgh Area Plan

– supporting people to live fulfilling lives

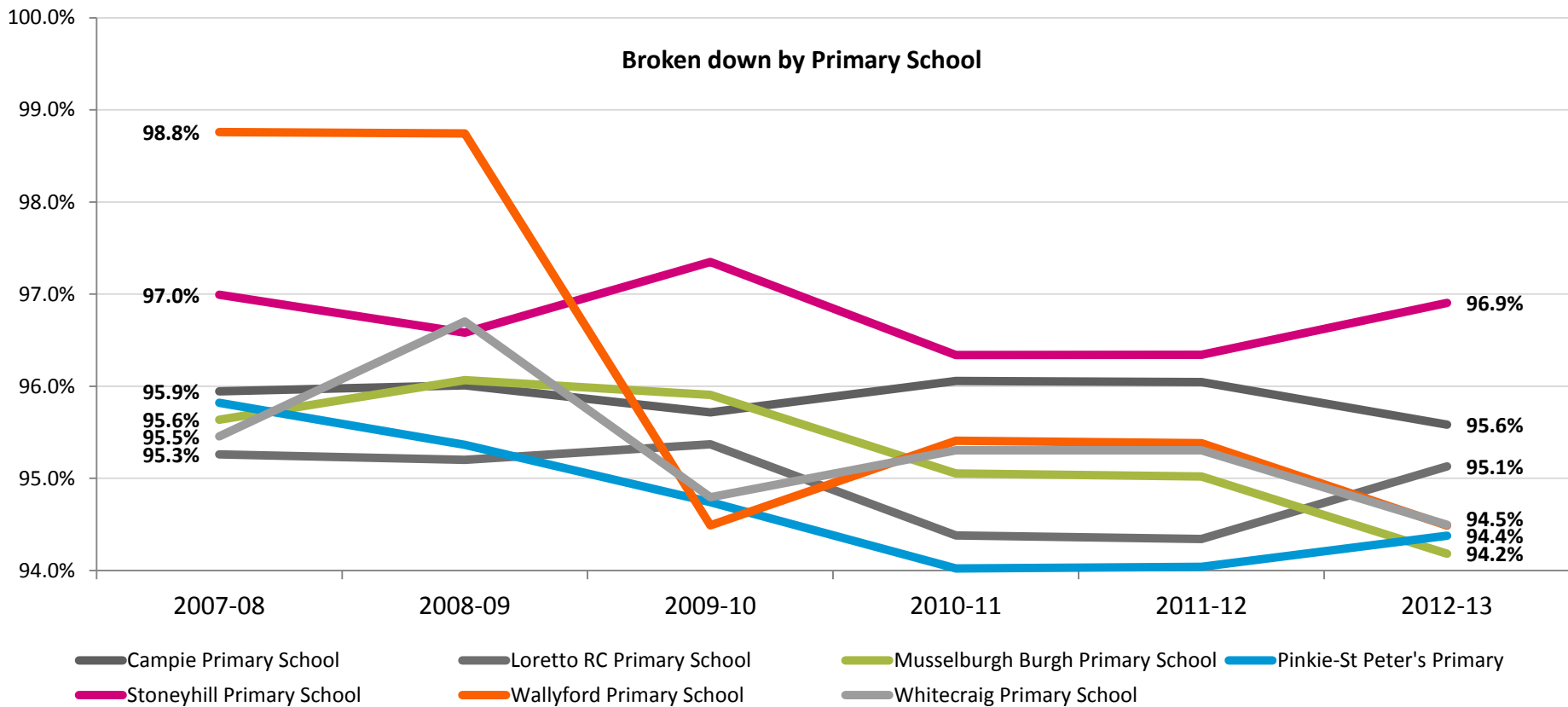
Some of the things we are already doing to achieve this include:



Attendance Matters

Missing School is Missing Out

Primary School Attendance Rates



Data presented to the community= Facts instigated discussion and informed decision-making

Musselburgh Area Plan

– supporting people to live fulfilling lives



CROSSREACH

providing a caring future

Musselburgh Area Plan

– supporting people to live fulfilling lives



Reading
is Braw



Reading
is Braw

5

week

Reading Challenge

I did it!



What's it Like to be Me? Family Voices



Musselburgh Total Place
Family Focus

Musselburgh Area Plan

– working towards safe and vibrant communities

6. Making the Musselburgh Area a **safe place** to live, work and travel within.
7. Ensuring individuals and the Musselburgh community collectively have the **confidence, capacity and resources to be supportive, inclusive and resilient.**

FIND

SPORT



Come and have a go at your local community sports club. Whether it's football, rugby, golf or cricket, get down to your local sports club and find out more about how you can jump, fly, swim and run.

Full details of all your local sports clubs overleaf.

MUSSELBURGH
**COMMUNITY
SPORTHUB**



PUTTING COMMUNITY SPORT ON THE MAP

GET FIT. GET INSPIRED.

 **MUSSELBURGH
CRICKET CLUB**

Age group: 8+
E: chris@musselburghcc.co.uk
W: musselburghcc.co.uk

 **MUSSELBURGH
TENNIS CLUB**

Age group: 4+
E: info@musselburghtennisclub.org.uk
W: musselburghtennisclub.org.uk

 **FISHERROW
YACHT CLUB**

Age group: 7-Adult
E: commodore@fisherrowyachtclub.com
W: fisherrowyachtclub.com

 **MUSSELBURGH AMATEUR
SWIMMING CLUB**

Age group: 7-18
E: mussmarlins@gmail.com
W: musselburghmarlins.co.uk

 **MUSSELBURGH &
DISTRICT ATHLETIC CLUB**

Age group: 8+
E: juniors@musselburghac.com
seniors@musselburghac.com
W: musselburghac.com

 **ESKMUTHE ROWING
CLUB - COASTAL ROWING**

Age group: 18+
E: eskmuthe@gmail.com
W: find 'eskmuthe rowing club' on facebook

 **JAPAN KARATE
ASSOCIATION
EAST LOTHIAN**

Age group: 4+
E: bertstewart@jkkarateeastlothian.co.uk
W: jkkarateeastlothian.co.uk

 **MUSSELBURGH
RUGBY CLUB**

Age group: 4+
E: via website below
W: musselburghrfc.com

 **MUSSELBURGH WINDSOR
FOOTBALL CLUB**

Age group: 6+
E: admin@musselburghwindsorfc.co.uk
W: musselburghwindsorfc.co.uk

 **LOTHIAN DISABILITY
BADMINTON CLUB**

Age group: 8+
E: hbandn@yahoo.co.uk
W: lothiandisabilitybadmintonclub.org.uk

 **MUSSELBURGH
YOUNGSTARS
FOOTBALL CLUB**

Age group: 6+
E: info@musselburghyoungstarsfc@hotmail.com
W: clubwebsite.co.uk/musselburghyoungstars

 **MUSSELBURGH
GOLF CLUB**

Age group: 8+
E: secretary@themusselburghgolfclub.com
W: themusselburghgolfclub.com

 **JEWEL KARATE**

Age group: 5+
E: info@jewelkarate.club
W: jewelkarate.club/musselburgh.html

 **MUSSELBURGH MONARCHS
BMX CLUB**

Age group: 5+
E: musselburghbmx@gmail.com
W: facebook.com/musselburghbmxclub

FREE
ENTRY

For All Ages!
Refreshments Available

"A unique opportunity to find out more about what is available in your area and get involved with local community groups and organisations."

MUSSELBURGH COMMUNITIES DAY

SATURDAY 25TH JUNE 2016 - 11AM-3PM

Venue 1 of The Brunton Hall,
Ladywell Way, Musselburgh, EH21 6AA

What's on?

Storytelling with

Children's Author, Nick Sharratt

Author of 'Don't Put Your Finger in the Jelly, Nelly!' from 11am-12pm

Youth Arts Performances

Group Demonstrations

Balloon Modelling

Face Painting

Who will be there?

Sports clubs

Theatre Companies

Voluntary Organisations

Local Schools

Boy Scout and Guiding Associations

Police and Fire Services

Community Councils

Community Groups

Musselburgh
Area Partnership

Musselburgh Area Plan

– working towards safe and vibrant communities

This has included the first Musselburgh Communities Day which we hope to make an annual event:



What: event, artist or venue Near: town or postcode

Select dates today tomorrow this weekend Select times afternoon evening late night

Events Places Articles

Music Days out Theatre Kids Comedy Clubs Visual art Dance More

What's On East Lothian

Filter by: What's On East Lothian x Filtered Free events

32 events Sorted by popularity / date & time

The Magic of Motown*



Tribute to the sweet soul sounds of Motown starring the supremely-talented Magic of Motown band, with hits made famous by the Isley Brothers, Stevie Wonder, Marvin Gaye, Martha Reeves and more.

The Brunton, Musselburgh

Sat 8 Apr 2017 £24.50 (E22.50) / 0131 555 2240

19:30

Daniel Sloss: So?*



The Scottish comedian, and recent recipient of the 2016 Sydney Comedy Festival 'Best of the Fest' International Award, presents his latest show.

The Brunton, Musselburgh

Fri 2 Dec £14.50 / 0131 555 2240

20:00

Sally Morgan*



Got a goldfish that you flushed down the toilet that you need to say sorry to? Now's your chance to apologise through the medium of Sally Morgan.

The Brunton, Musselburgh

Thu 8 Oct £25 / 0131 555 2240

19:30

Craig Hill: Up And Coming!*



High camp buffoonery from the kilted comedian.

The Brunton, Musselburgh

Fri 3 Feb 2017 £15.50 (E13.50) / 0131 555 2240

19:30



MUSIC NEWSLETTER
Fortnightly updates on the latest tours, hottest tickets, best new music and videos. All for you.

HELLO! A GOLDEN AGE
This Aug & Sep, take an unforgettable day trip and celebrate the glories of the steam engine.

CHILDREN'S FILMS
Family films near you this week, including The SP-C and Finding Dory

ALBUM REVIEWS
Want to keep up with the hottest new album releases? Discover the best new music courtesy of The List.

Utility Bill Discount

You Could Be Entitled To £379 Off Your Gas & Electricity Bills

>

Now we want to hear from you?

Over the last year we have developed a number of ideas of projects that could help achieve the goals we have for the area.

We need your help to identify

- which of the potential projects you think will have the most impact locally
- where we should focus our attention
- and what we may have missed out

Musselburgh
Area Partnership



What happens next...

- the Musselburgh Area Plan is now available on-line
- Musselburgh Area Partnership will continue to meet 6 times a year with additional sub-group meetings to continue to develop the Area Plan and ensure we achieve the outcomes .

.... To Continue the real focus on delivery!

Musselburgh Area Partnership



**the local voice of community planning
across the Musselburgh wards**