

REPORT TO: Policy and Performance Review Committee

MEETING DATE: 15 March 2016

BY: Depute Chief Executive (Partnerships and Community Services)

SUBJECT: Supported Bus Services

1 PURPOSE

- 1.1 This report provides the Committee with an opportunity to assess current provision for Supported Bus Services and what is intended for future tenders

2 RECOMMENDATIONS

- 2.1 The Committee is requested to note the content of this report which forms a basis for discussion with regard to current and future Supported Bus Services within East Lothian.
- 2.2 Continue to discuss with operators the possibilities of improving the route performance especially Service 122.
- 2.3 Take part in nationwide discussions relating to a pass which can be used by all operators to utilise one card across all public transport. Trials of this card are to be carried out in the Aberdeen and Dundee areas this year.
- 2.4 Prior to future Supported Services contract discuss with operators if services can become purely commercial so further routes can be developed.
- 2.5 Submit a proposal for funding to Transport Scotland's 2016-17 funding for Smarter Choices, Smarter Places to provide a service initially from Humbleton to Haddington and if successful develop this for other smaller communities within East Lothian.

3 BACKGROUND

- 3.1 Historically East Lothian Council has provided supported services on non commercial routes that are deemed to be required for the community but cannot be operated commercially by operators. Generally these have been evening routes on the east – west corridor and daily operation on north south routes.
- 3.2 The Supported Services contract is currently in it's first year of a 4 plus 1 year contract which commenced in May 2015.
- 3.3 East Lothian Council carried out a wide consultation process with stakeholders which included public meetings, meetings with local members and community groups and online consultation via the Council's website.
- 3.4 Although the overwhelming result of this was better connectivity with rail transport where possible it has been realised that after the introduction of the changed timetables on existing routes that there had been little input from existing users of the public services who were happy with this service. During the next tender process the consultation will attempt to include responses from existing users.
- 3.5 Service routes 120 and 121 (6 months in the Summer) have been increased to operate on Sunday's to increase public options for travel within East Lothian
- 3.6 Two new routes have been introduced which combine to offer a service to Edinburgh Royal Infirmary which covers the more rural areas of the county.
- 3.7 The Supported Services contract as well as providing top up funding for routes outwith peak times it also provides funding to "kick start" new routes such that these become commercial over the contract period.
- 3.8 Attached are appendices which cover the following topics:
- Appendix 1 Route numbers and daily rates.
 - Appendix 2 Passenger numbers per calendar month.
 - Appendix 3 Cost per passenger journey on each route.
 - Appendix 4 East Lothian by Bus map

4 POLICY IMPLICATIONS

- 4.1 None

5 EQUALITIES IMPACT ASSESSMENT

- 5.1 This report is not applicable to the well being of equalities groups and an Equalities Impact Assessment is not required.

6 BACKGROUND PAPERS

- 6.1 None

7 RESOURCE IMPLICATIONS

- 7.1 Financial - None
7.2 Personnel - None
7.3 Other - None

AUTHOR'S NAME	Ian Dalglish
DESIGNATION	Transport Services Manager
CONTACT INFO	Ext 7932
DATE	3 March 2016

Policy and Performance Committee 15 March 2016

Daily rates

Route no.	Operator	Monday	Tuesday	Wednesday	Thursday	Friday	Saturday	Sunday
110	Prentice Coaches	£325	£325	£325	£325	£325	£325	£340
111	Prentice Coaches	£465	£465	£465	£465	£465	£465	
113	Lothian Buses	£175	£175	£175	£175	£175	£175	£820
120	Eve Coaches	£214	£214	£214	£214	£214	£214	£120
121	Eve Coaches	£348	£348	£348	£348	£348	£348	£348
122	Prentice Coaches	£555	£555	£555	£555	£555	£555	
123	Eve Coaches	£383	£383	£383	£383	£383	£383	
124	First Bus	£190	£190	£190	£190	£220	£220	£590
130	Eve Coaches	£238	£238	£238	£238	£238	£238	£120
253	Perryman's Buses	£80	£80	£80	£80	£80	£64.16	£38.05

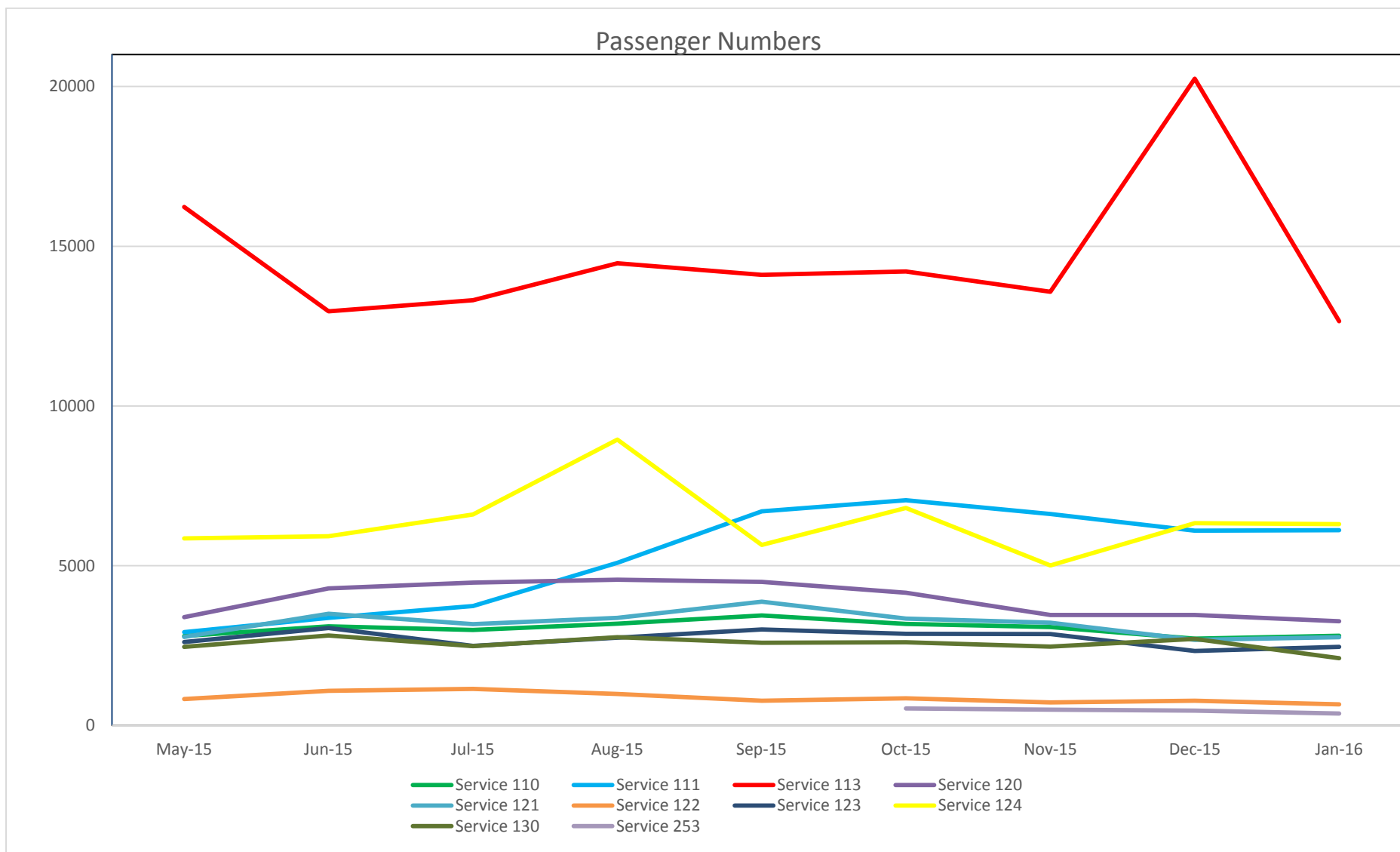
Period covered

Route no.	Operator	Period covered by supported services contract
110	Prentice Coaches	Full service
111	Prentice Coaches	Full service (Partial Sunday service as part of Service 110)
113	Lothian Buses	From 19:00 to 00:00 Monday to Saturday and all day Sunday
120	Eve Coaches	Full service (Sunday service combines with Service 130)
121	Eve Coaches	Full service
122	Prentice Coaches	Full service
123	Eve Coaches	Full service
124	First Bus	From 19:00 to 00:00 Monday to Saturday and all day Sunday
130	Eve Coaches	Full service (Sunday service combines with Service 120)
253	Perryman's Buses	Mon to Sunday extension to include Innerwick from October to March

Policy and Performance Committee 15 March 2016

Passenger Numbers

Route No.	May 15	June 15	July 15	August 15	September 15	October 15	November 15	December 15	January 16
110	2803	3104	2988	3188	3447	3182	3084	2718	2811
111	2919	3370	3740	5093	6701	7050	6623	6098	6110
113	16230	12960	13315	14466	14103	14209	13575	20246	12650
120	3389	4290	4471	4566	4494	4157	3457	3457	3263
121	2769	3497	3174	3369	3878	3346	3219	2678	2761
122	830	1087	1144	986	774	850	723	776	664
123	2612	3053	2491	2747	3008	2872	2859	2336	2462
124	5859	5923	6604	8945	5649	6810	5007	6336	
130	2459	2819	2482	2765	2592	2603	2466	2710	2108
253						530	497	463	373



Policy and Performance Committee 15 March 2016

Cost per passenger journey

Route No.	May 15	June 15	July 15	August 15	September 15	October 15	November 15	December 15	January 16
110	£3.62	£2.95	£3.39	£3.18	£2.85	£3.19	£3.19	£3.49	£3.38
111	£4.14	£3.59	£3.36	£2.37	£1.80	£1.71	£1.83	£1.91	£1.83
113	£0.53	£0.60	£0.60	£0.60	£0.56	£0.56	£0.62	£0.38	£0.66
120	£1.82	£1.41	£1.40	£1.83	£1.32	£1.51	£1.72	£1.69	£2.23
121	£3.90	£2.99	£3.40	£3.20	£2.69	£3.35	£3.24	£3.77	£3.40
122	£17.38	£13.28	£12.61	£15.20	£18.64	£17.62	£19.19	£17.88	£20.06
123	£3.80	£3.26	£4.15	£3.63	£3.31	£3.60	£3.35	£4.10	£3.73
124	£1.40	£1.27	£1.18	£0.94	£1.33	£1.14	£1.59	£1.15	
130	£2.76	£2.45	£2.78	£2.46	£2.57	£2.65	£2.66	£2.37	£2.99
253						£4.21	£4.28	£4.55	£5.52



EAST LOTHIAN by bus

