

REPORT TO: East Lothian Integration Joint Board

MEETING DATE: 26 November 2015

BY: Chief Officer

SUBJECT: Delayed Discharges

1 PURPOSE

1.1 This report updates the East Lothian Integration Joint Board (IJB) on performance on delayed discharges for East Lothian.

2 RECOMMENDATIONS

2.1 The IJB is recommended to:

- i. Note the performance to October 2015.
- ii. Note and support the actions being taken to improve performance.
- iii. Note that a verbal update on performance for November 2015 will be given at the meeting.
- iv. Agree that performance on delayed discharges should be routinely reported to the IJB until a standard performance report is in place.

3 BACKGROUND

3.1 Delayed Discharge performance was reported routinely to the Shadow Board. The IJB requested a separate report on the subject at its meeting on 29 October 2015.

3.2 The IJB has a key strategic objective and performance target to minimise the total number of delays, meet the current two week target and work towards the future 72 hour target. No date has yet been set for achievement of the 72 hour target.

3.3 Performance in October 2015 is reported below.

	Edinburgh	East Lothian	Midlothian	West Lothian	Non - Lothian
Overall	168	37	8	10	7
Over 4 Weeks	80	13	1	3	4
Over 2 Weeks	120	21	1	4	4

3.4 Clearly this represents disappointing performance when compared with previous months shown below.

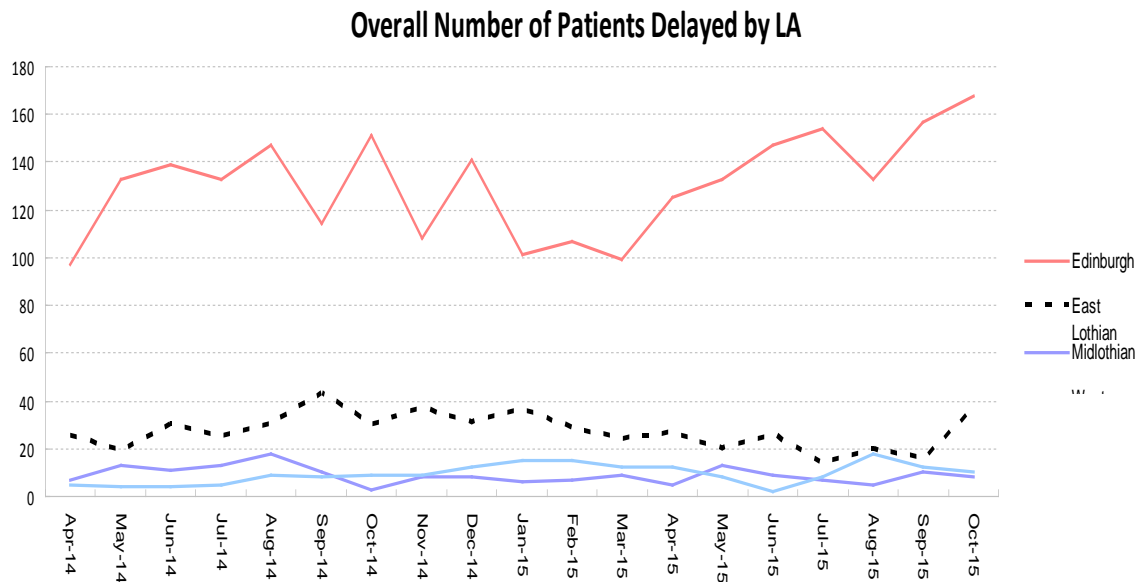
3.5 East Lothian performance on the total number of delays from April 2013 to October 2015 is shown below.

Apr-13	May-13	Jun-13	Jul-13	Aug-13	Sep-13	Oct-13	Nov-13	Dec-13	Jan-14	Feb-14	Mar-14
30	28	29	30	21	22	15	24	22	19	16	17

Apr-14	May-14	Jun-14	Jul-14	Aug-14	Sep-14	Oct-14	Nov-14	Dec-14	Jan-15	Feb-15	Mar-15
25	19	30	25	30	43	30	37	31	36	29	24

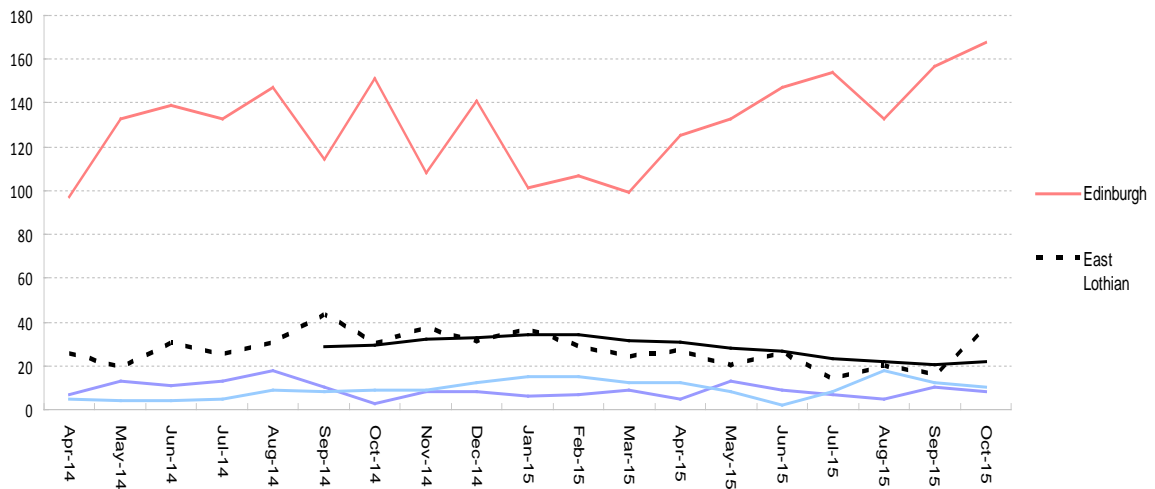
Apr-15	May-15	Jun-15	Jul-15	Aug-15	Sep-15	Oct-15	Nov-15	Dec-15	Jan-16	Feb-16	Mar-16
27	20	26	14	20	16	37					

3.6 This performance on the total number of delays is shown in chart form below. East Lothian is the dotted black line.



3.7 East Lothian has been steadily improving the total number of delays over this period. This is demonstrated in the moving average chart below where the solid black line shows a six month moving average for East Lothian.

Overall Number of Patients Delayed by LA

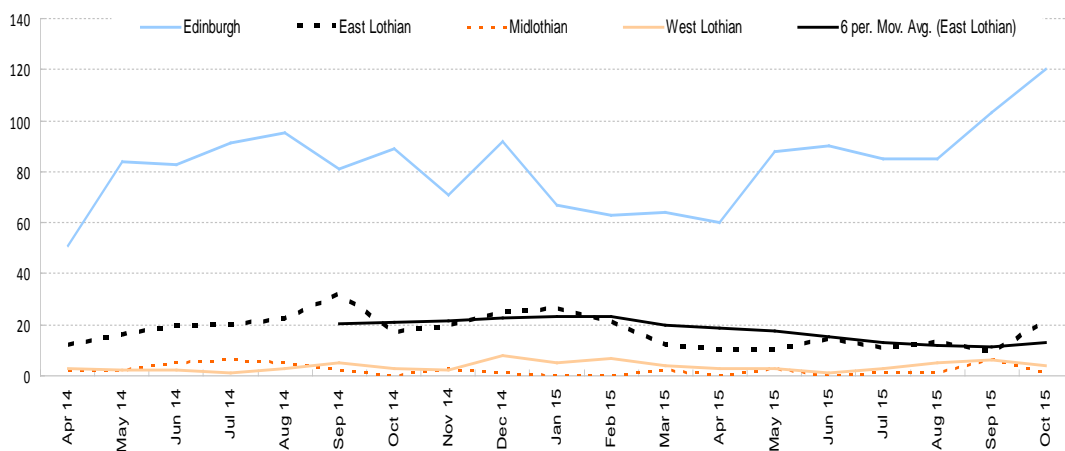


3.8 At the time of writing this report the census for November 2015 was not completed. A verbal update will be given at the meeting.

3.9 The causes of the increase in numbers in October are twofold. A decrease in the availability of home care hours and an increase in additions to the list of delays in the days immediately before the census.

3.10 A significant challenge also presents in achieving the 2 week target. The chart below illustrates performance against the 2 week standard. East Lothian is represented by the dotted black line and the solid black line shows a moving 6 month average performance.

Number of Patients Delayed Over 2 Weeks by LA



- 3.11 This shows that the number over 2 weeks has been declining steadily with the exception of October 2015.
- 3.12 The delayed discharge task force has agreed a number of additional actions:
- 3.13 Recruitment to the in house domiciliary care service is underway.
- 3.14 “Collaborative allocation” has been instituted with the co-operation of providers to maximise the use of available hours in each zone. Providers have also increased recruitment efforts. The available hours have been increasing steadily from October into November.
- 3.15 The daily “huddle” at Roodlands Hospital that looks at every admission of someone over 65 to hospital is now receiving “Estimated Date of Discharge” information (where this is known) in order to anticipate the likely date when a patient will be added to the system.
- 3.16 ELSIE (East Lothian Service for Integrated Care of the Elderly) has increased its capacity to 7 days per week and up till 8pm each night. This will increase the number of avoided admissions and the number of people transferred from hospital to home sooner.
- 3.17 Work has begun to develop a collaborative campaign to encourage recruitment into the care sector in East Lothian.

4 POLICY IMPLICATIONS

- 4.1 There are no policy implications of this paper.

5 EQUALITIES IMPLICATIONS

- 5.1 There are no equalities implications of this paper.

6 RESOURCE IMPLICATIONS

- 6.1 There are no immediate resource implications of this paper. All additional investment has already been funded from the Delayed Discharge allocation.

7 BACKGROUND PAPERS

- 7.1 None.

AUTHOR'S NAME	David Small
DESIGNATION	Chief Officer
CONTACT INFO	david.a.small@nhslothian.scot.nhs.uk
DATE	17/11/15