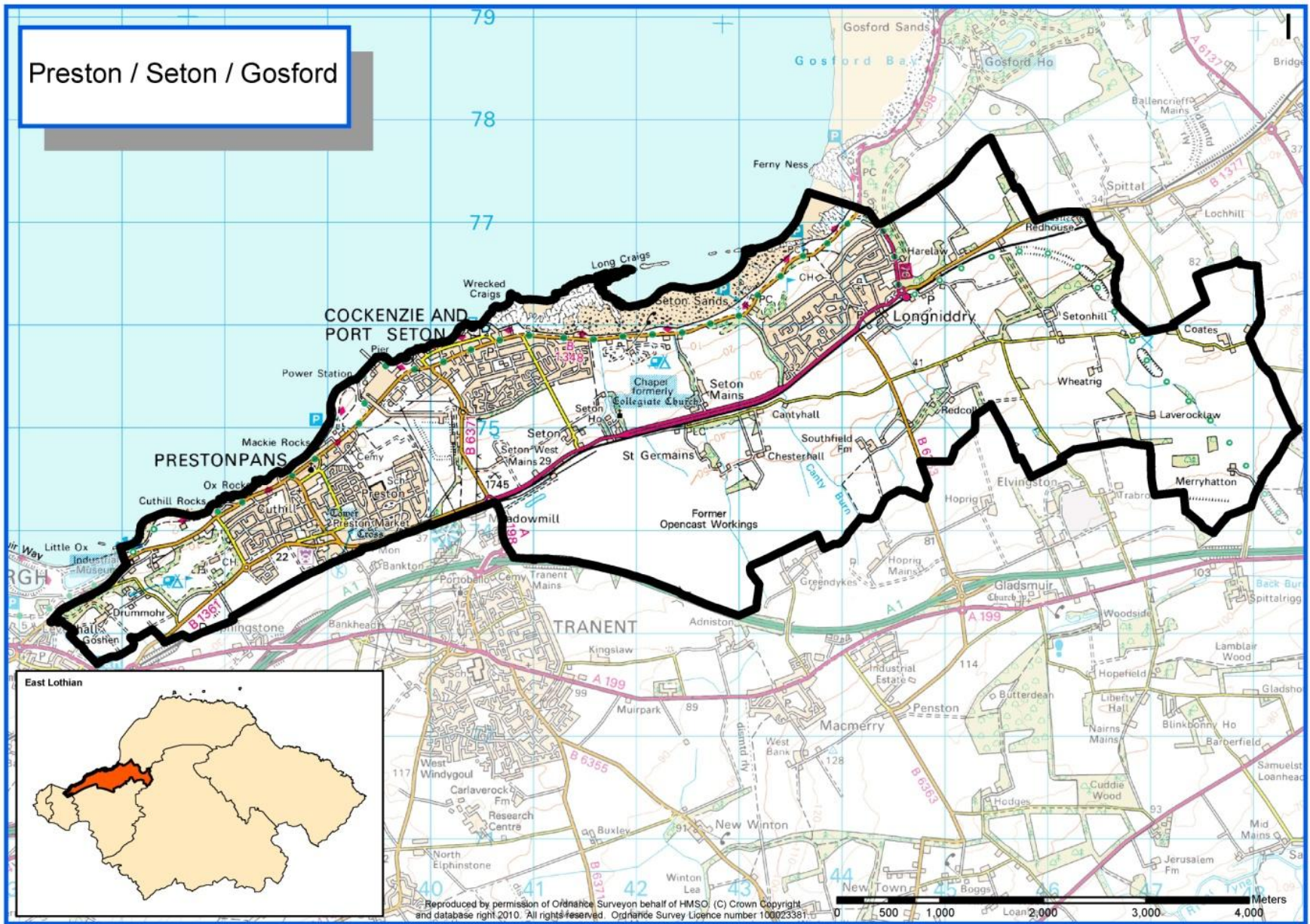


Preston / Seton / Gosford



Preston Seton Gosford

Population

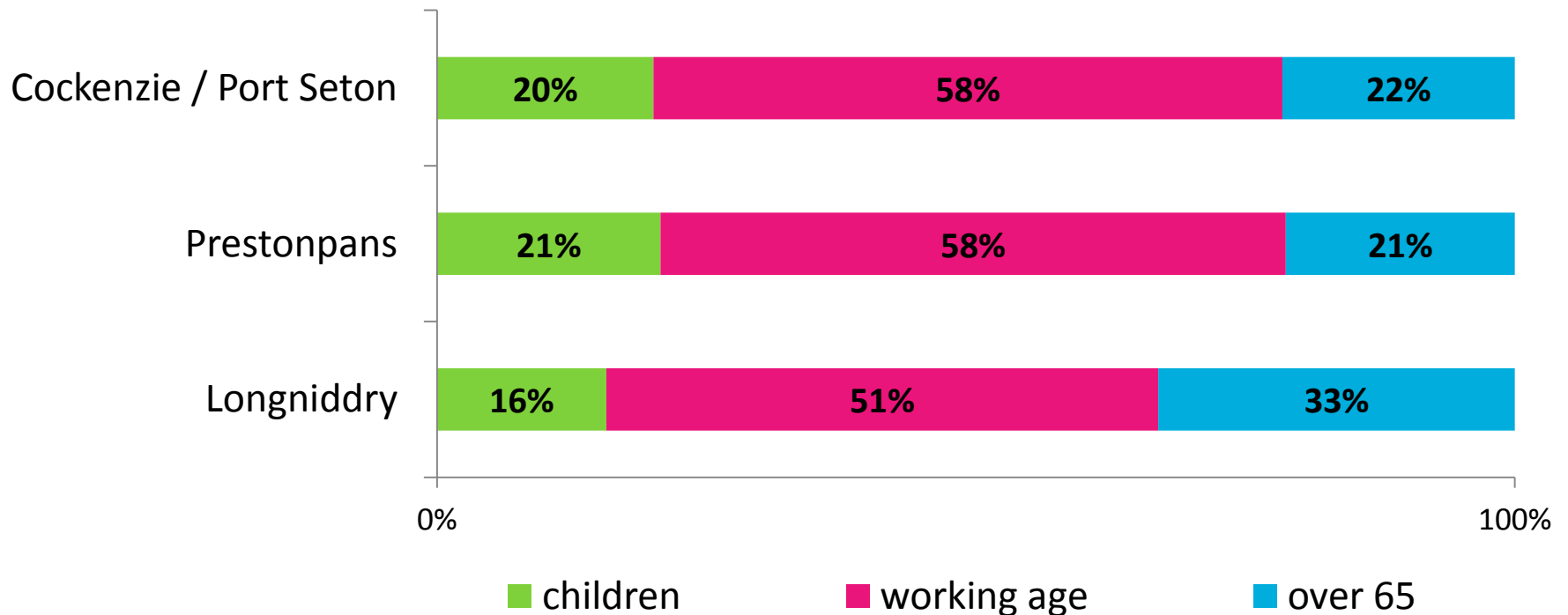
17,540 people live in the PSG ward

	PSG	East Lothian	Scotland
% that are children and young people	19%	19%	17%
% that are working age (16-64)	64%	63%	66%
% that are pensionable age (65+)	17%	18%	17%

Population

East Lothian's population is expected to grow by 28% between 2012 and 2035

- If this ward grows at the same rate that means there will be 22,451 people living here in 20 years time.



4 key objectives of The East Lothian Plan

- 1. To reduce inequalities across and within our communities**
- 2. To support people to develop the resilience they need to lead a fulfilling life**
- 3. To develop a sustainable economy across the area**
- 4. To ensure safe and vibrant communities**

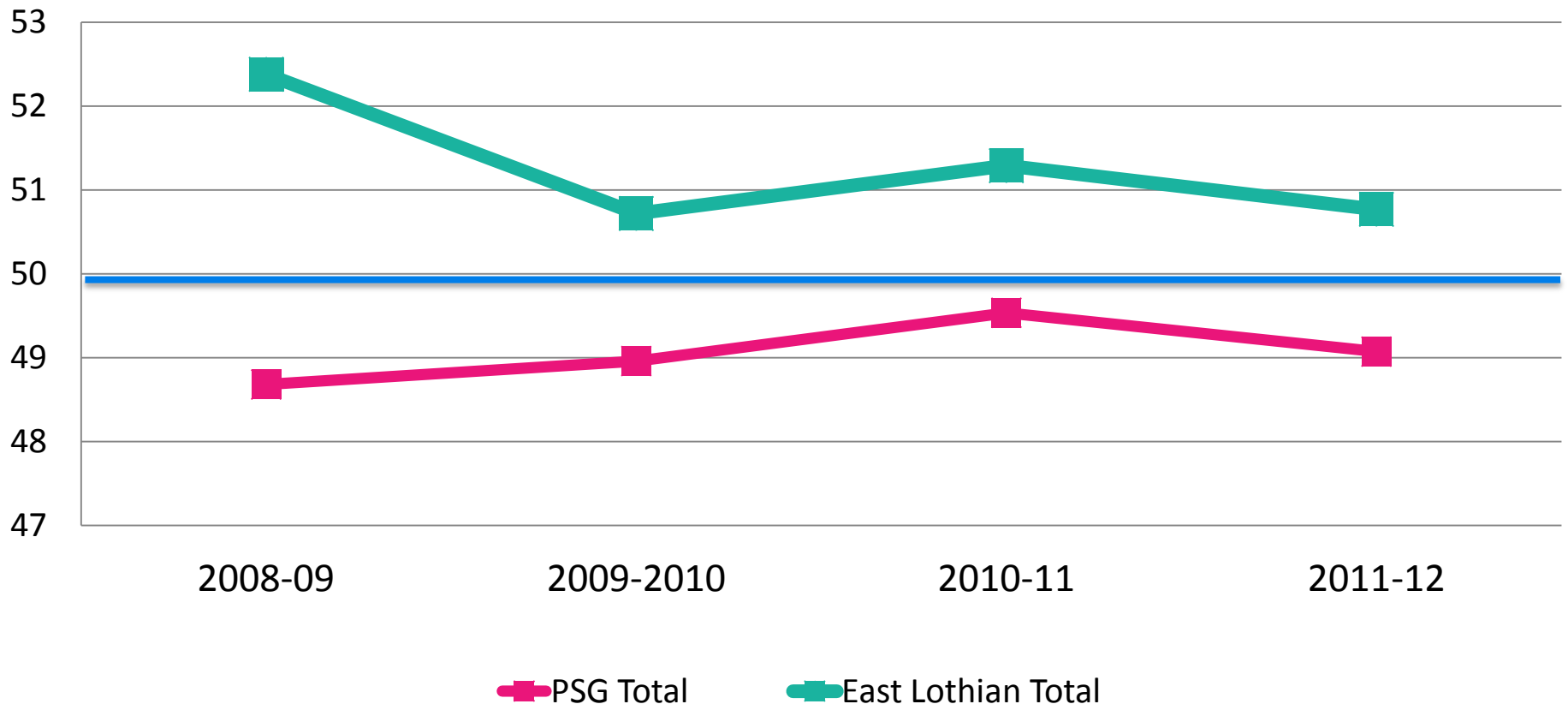
RESILIENT PEOPLE

- **That children have the best start in life**
- **That young people have the opportunity to succeed**
- **That people have the skills, confidence and capacity to make positive change in their lives and their communities**

Early years

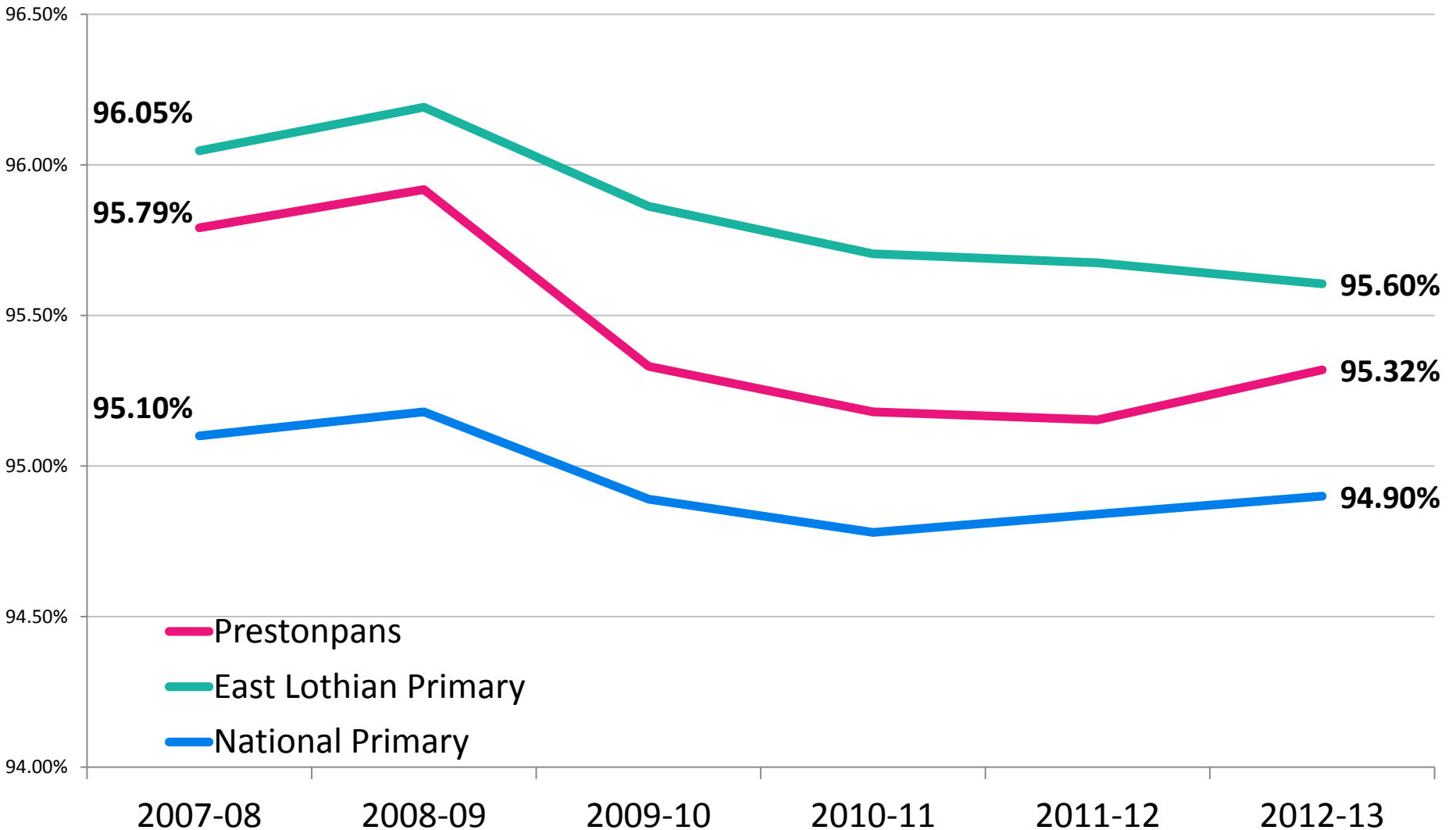
In nationally standardised testing P1 pupils entering school score below the East Lothian averages in relation to core skills and readiness to learn.

Average standardised PIPS scores at P1 baseline assessment for pupils



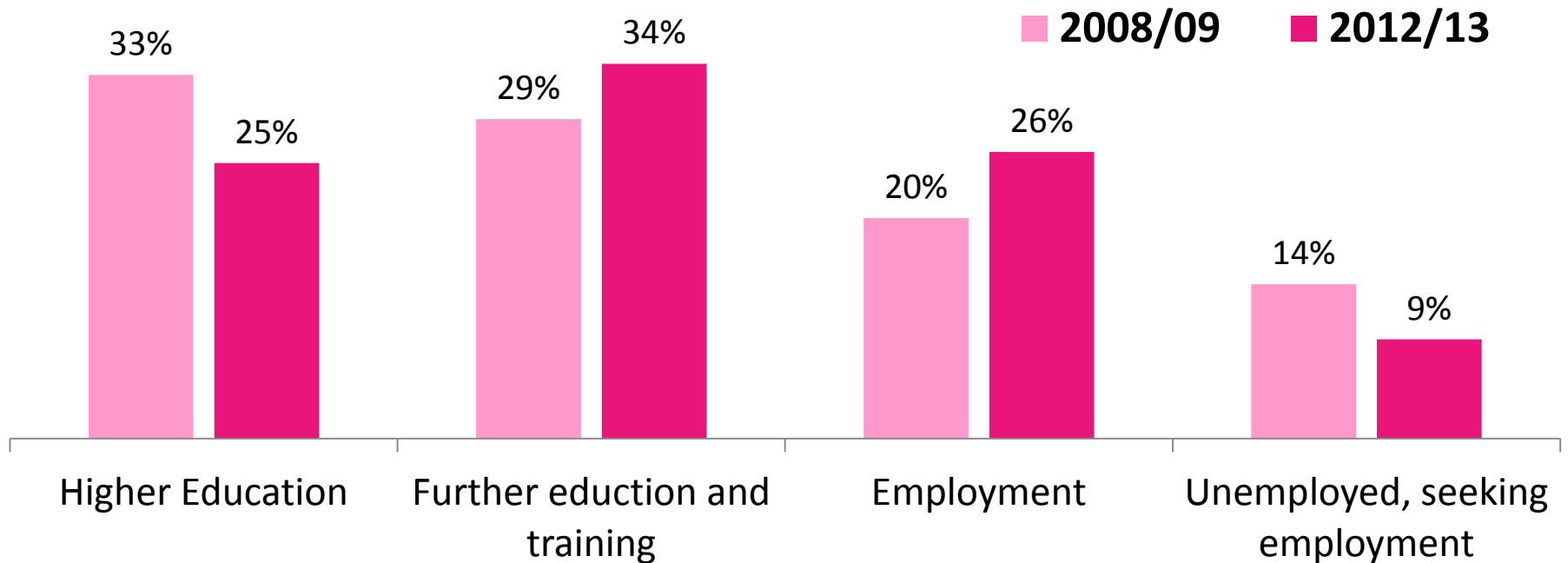
Children

Primary School rates of attendance



post-school destinations

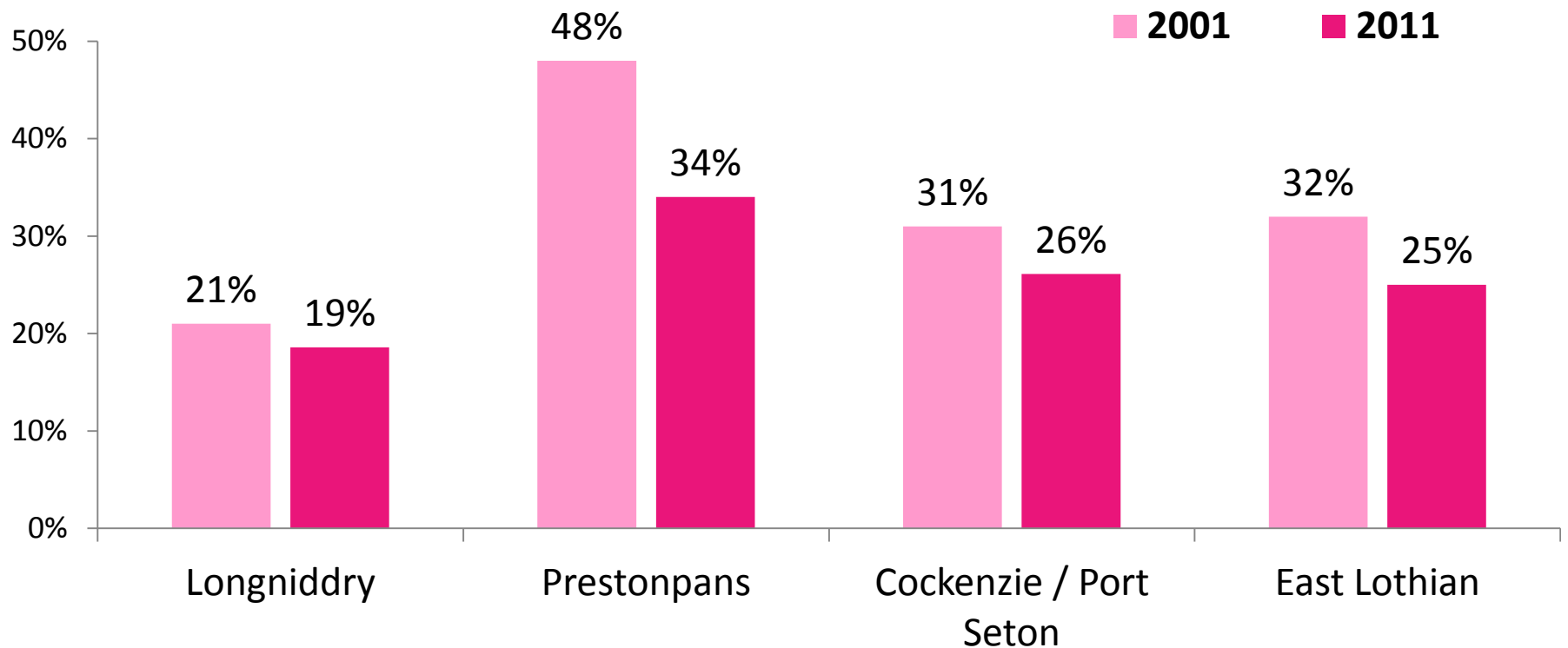
- 88% of school leavers in the PSG ward were assessed as having achieved and sustained a positive destination 9 months after leaving school
 - compared to 90% across East Lothian



Achievement among adults

- The trend across the area is towards higher levels of formal qualifications

% of the adult population with no formal qualifications

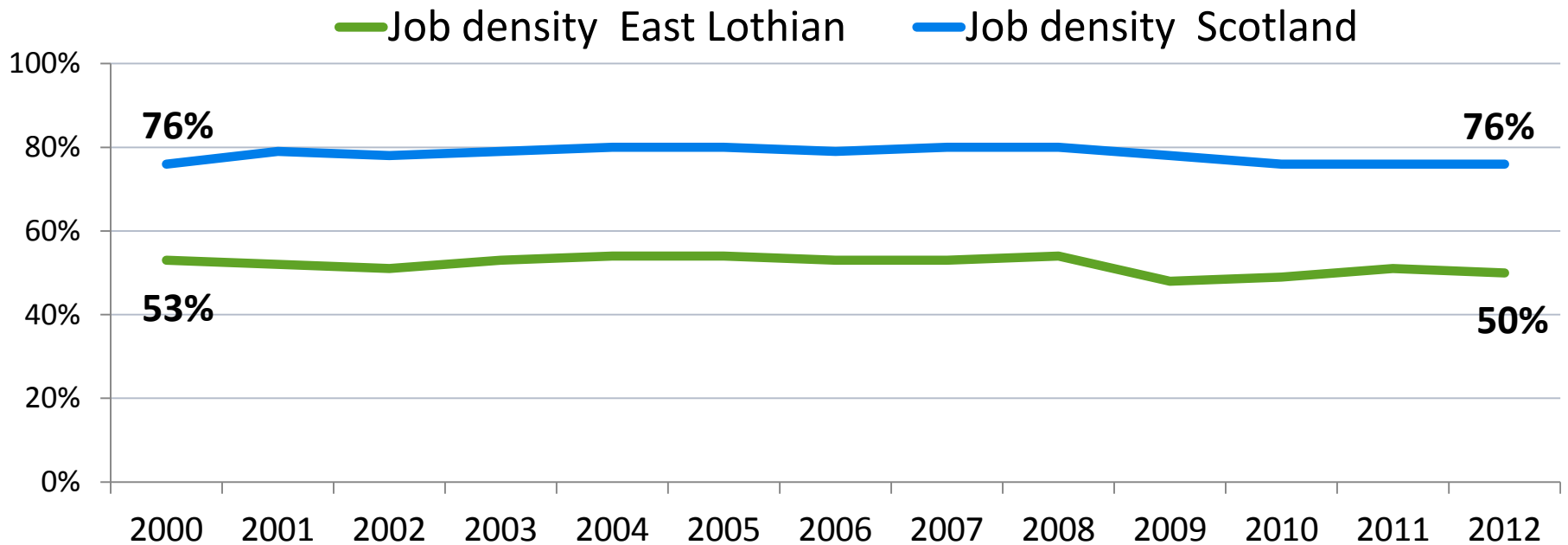


SUSTAINABLE ECONOMY

- **Availability of local employment**
- **Business sectors are growing**
- **Thriving town and village centres**
- **Changing patterns of consumption that reduce the use of finite resources**

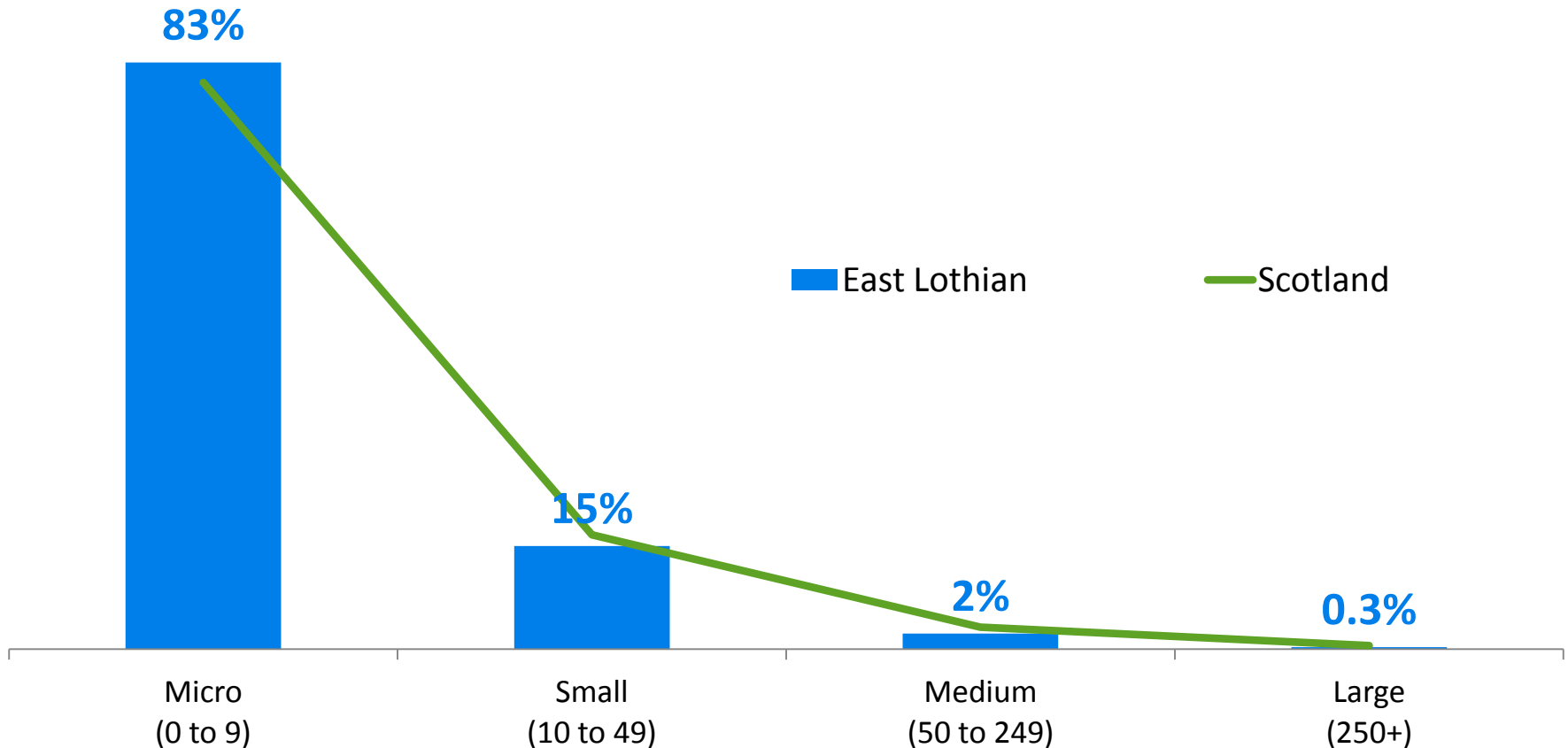
Business sector and local employment

- The number of local jobs available across East Lothian has grown by only 3% since 2001
- The ratio of total jobs available to number of the working age population is also comparatively low



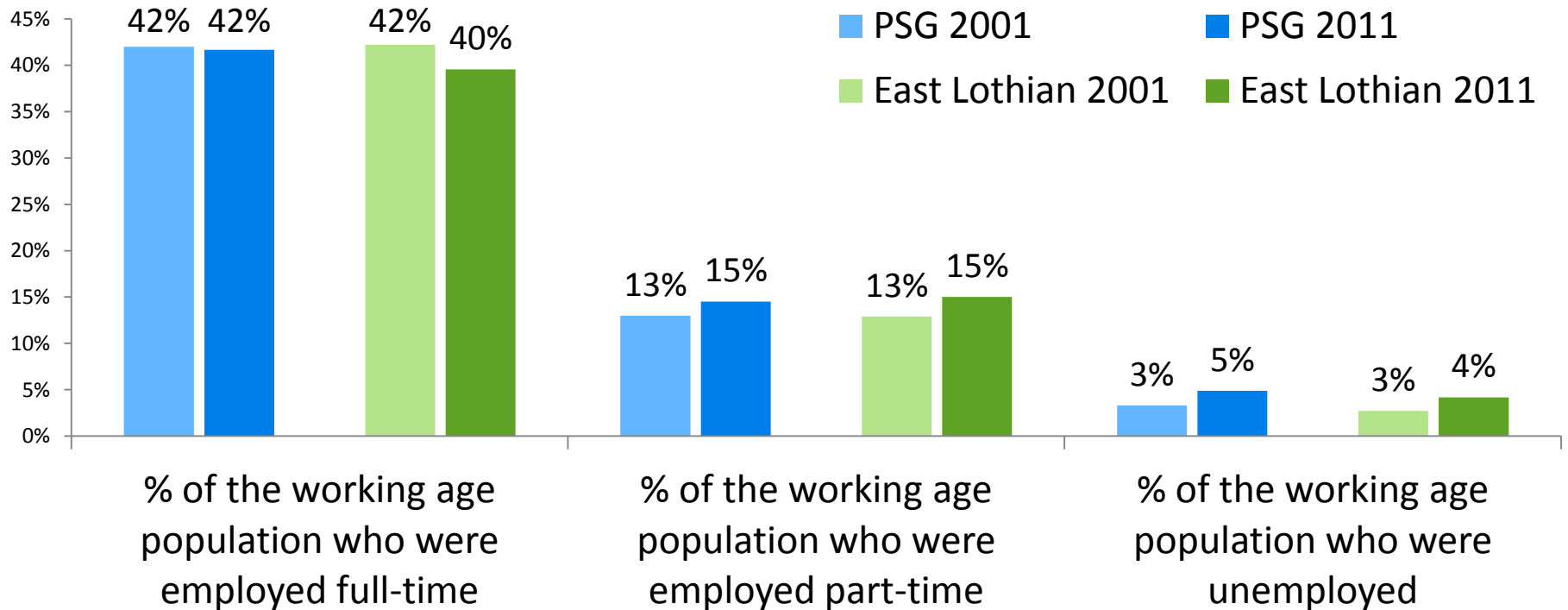
Business sector and local employment

- East Lothian also tends to have a higher proportion of smaller businesses and a lower number of large scale employers

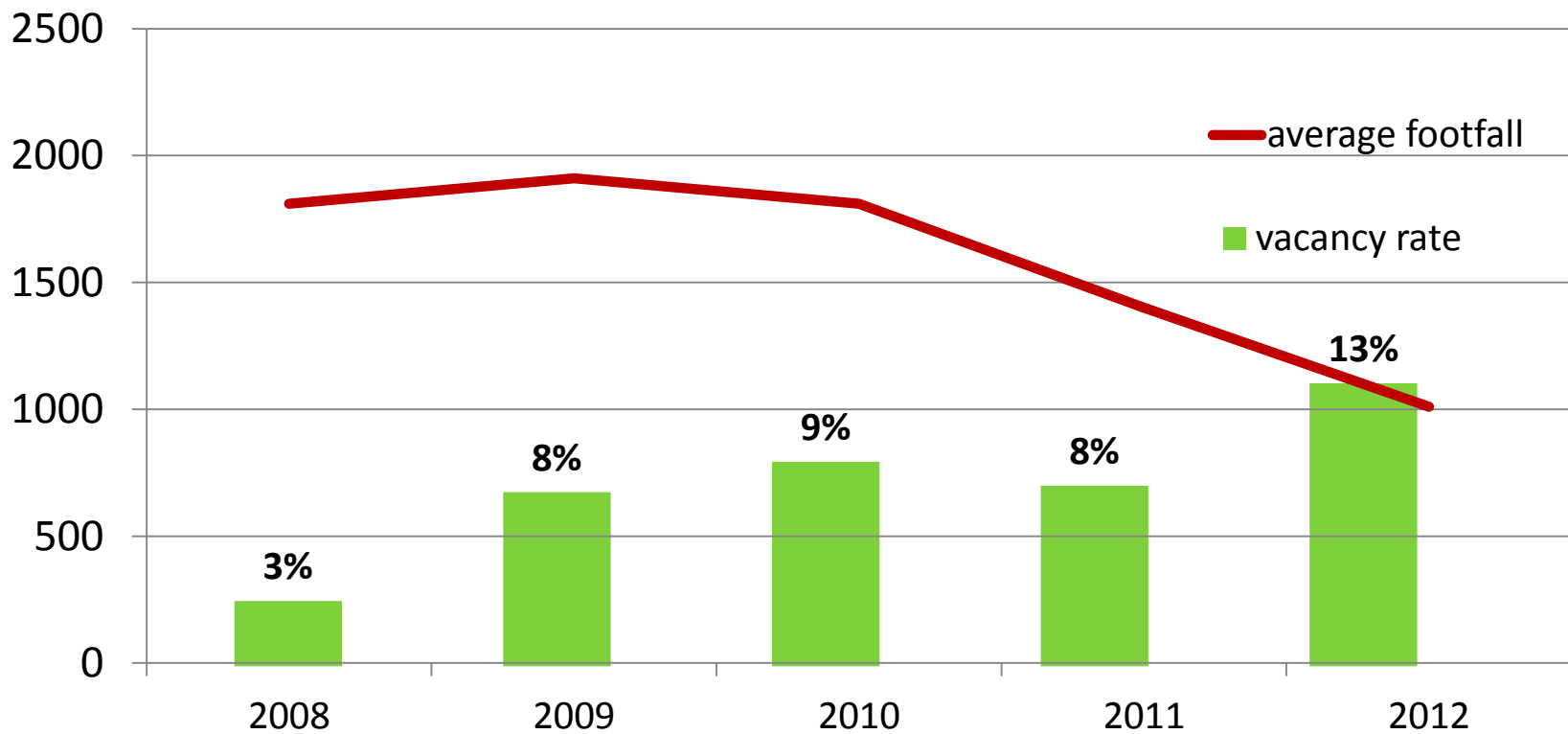


Economic activity

Since 2001 there has been a change in the pattern of economic activity across East Lothian – with a decrease in full-time employment, rising unemployment and fewer working age people choosing to be economically inactive to look after home/family.



thriving centres where people want to be?



SAFE AND VIBRANT COMMUNITIES

- That people have access to high quality sustainable housing
- That high quality built and natural environments enhance people's lives
- That our area is a safe place to live and be

natural and built environments

Do the natural and built environments in this area enhance people's lives?

- Prestonpans has the highest number of Grade A listed historic buildings of any town in East Lothian
- Working harbour in Cockenzie & Port Seton
- Areas of coastline included in the Firth of Forth Special Protection Area (SPA) and Ramsar designations
- Mural Trail (56 murals highlighting local history)
- Beachside /holiday environment at Port Seton

Vibrant communities...

Strong, vibrant communities is also about the people of the area, the opportunities they have and how they get involved:

- 3 Harbours Arts Festival
- In Bloom groups
- 4 busy community centres
- Battle of Prestonpans Trust, events and heritage site
- Cockenzie House
- The Goth ...

and how people feel about their local area....

- 98% of people in the Preston Seton Gosford ward rated their neighbourhood as a 'fairly good' or 'very good' place to live
- 2/3 of adults in the ward reported they **did not feel threatened at all** by crime in their neighbourhood
- 88% felt there had been no significant change in their neighbourhoods over the past 5 years
- people in this ward were far more likely to feel that they could influence decisions affecting their local area than people across East Lothian as a whole

4 key objectives of The East Lothian Plan

- 1. To reduce inequalities across and within our communities**
- 2. To support people to develop the resilience they need to lead a fulfilling life**
- 3. To develop a sustainable economy across the area**
- 4. To ensure safe and vibrant communities**