



Edinburgh, East Lothian and Scottish Borders Film Office

• ROSIE ELLISON – FILM EDINBURGH

• What is Film Edinburgh?

- Local authority service to promote, manage and facilitate filming.
- Established in 1990 as the first film office in Scotland, extensive experience of facilitating productions and recognised as the first point of contact for film & TV productions looking at SE Scotland.
- Working with East Lothian Council's economic development team since ~2000:
- city / coastline / countryside / castles package
- Advice and support to film & TV productions about locations, crew and facilities.
- Signposting & guidance for local authority services.

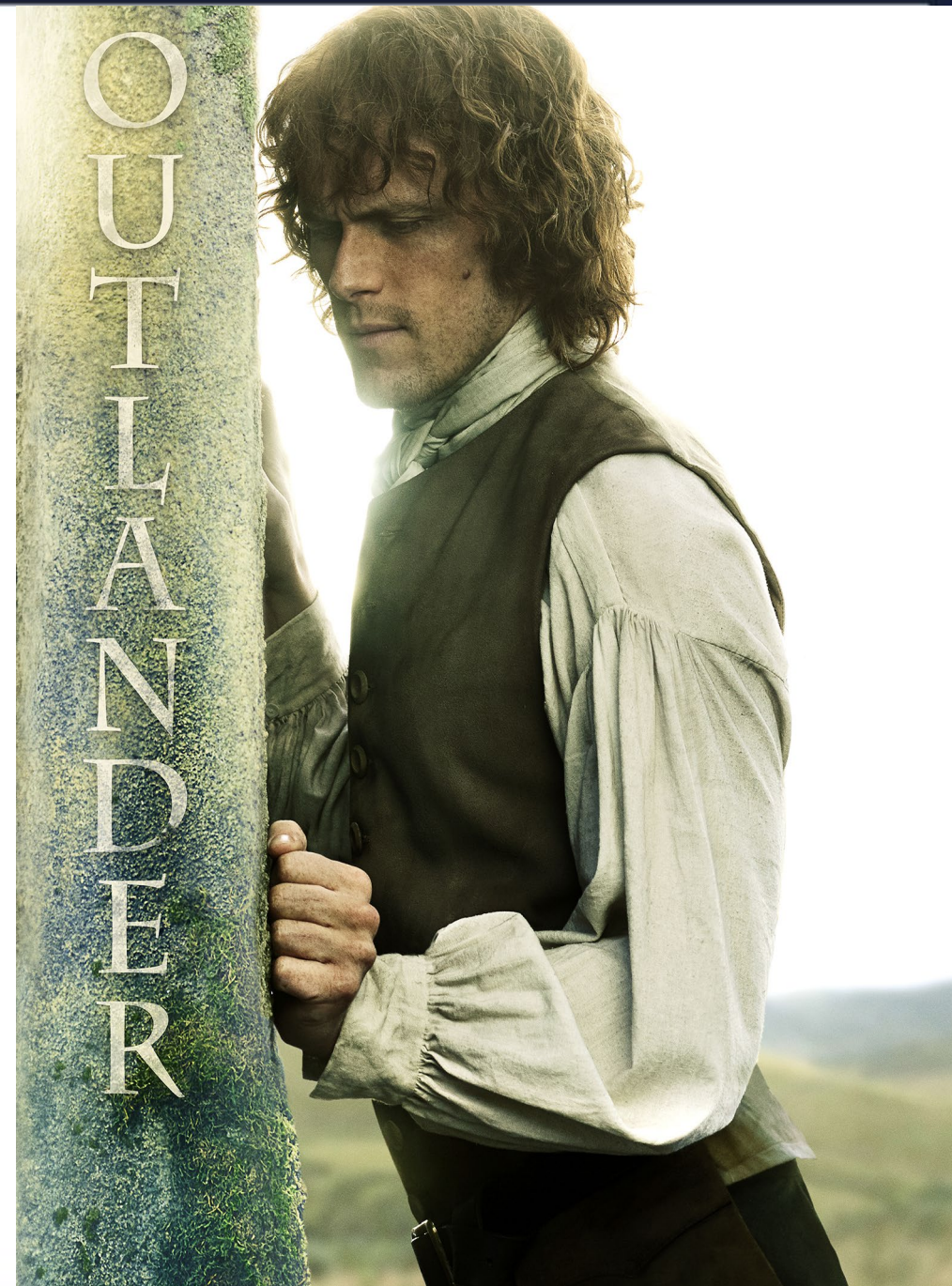


- **Benefits of filming**

- **Raise the profile of the city/region**
- Screen Tourism, inspiring visitors to come to Scotland.
- One in five (19%) said that film, TV or literature were a source of inspiration. This rose to 36% for European visitors and 37% for long haul visitors.

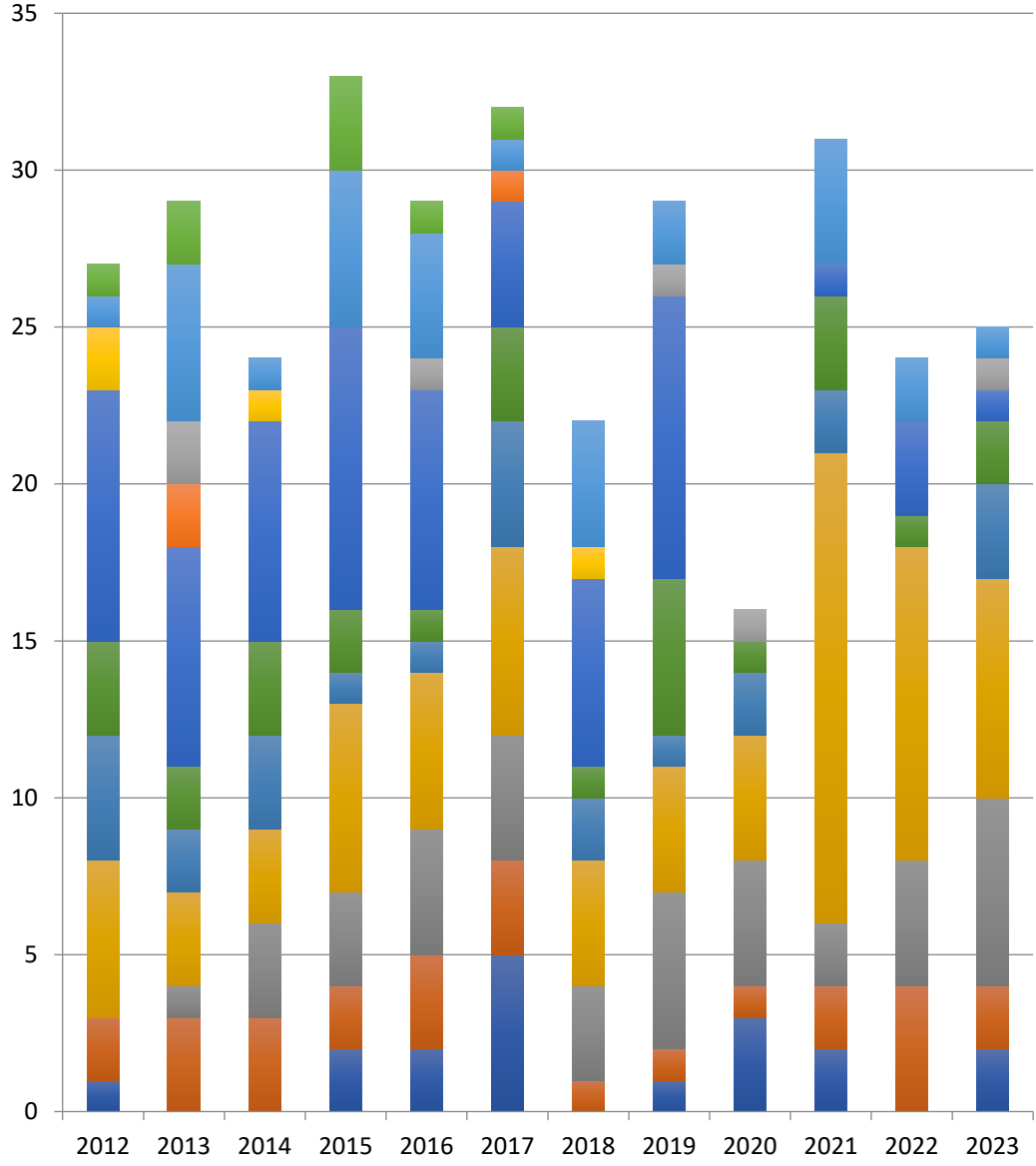
- **Contribute to the local economy**
- £500,000 - £1M/year to the local community (duration / type of production)

- **Civic pride & opportunities**
- Work experience / jobs
- Pride at seeing your home on the screen





• Variety of productions

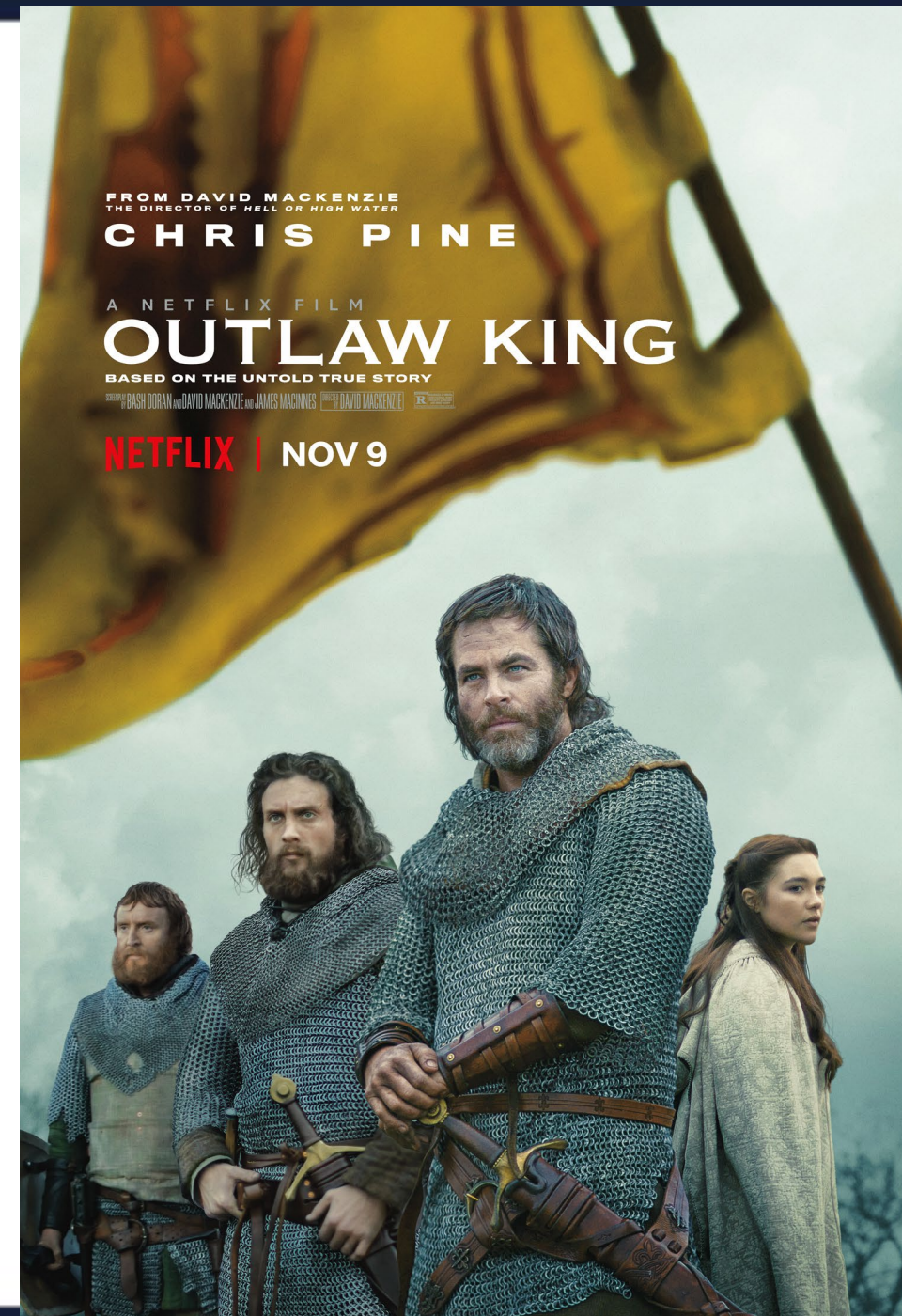


- 580 productions filmed in East Lothian since 2000
- 2500 enquiries about filming in East Lothian since 2000

- web
- Other (events/new)
- Childrens
- Corporates
- Factual TV
- TV Drama
- short films/students
- pop promo
- Photoshoots
- Light Ent
- Commercials
- Feature Films

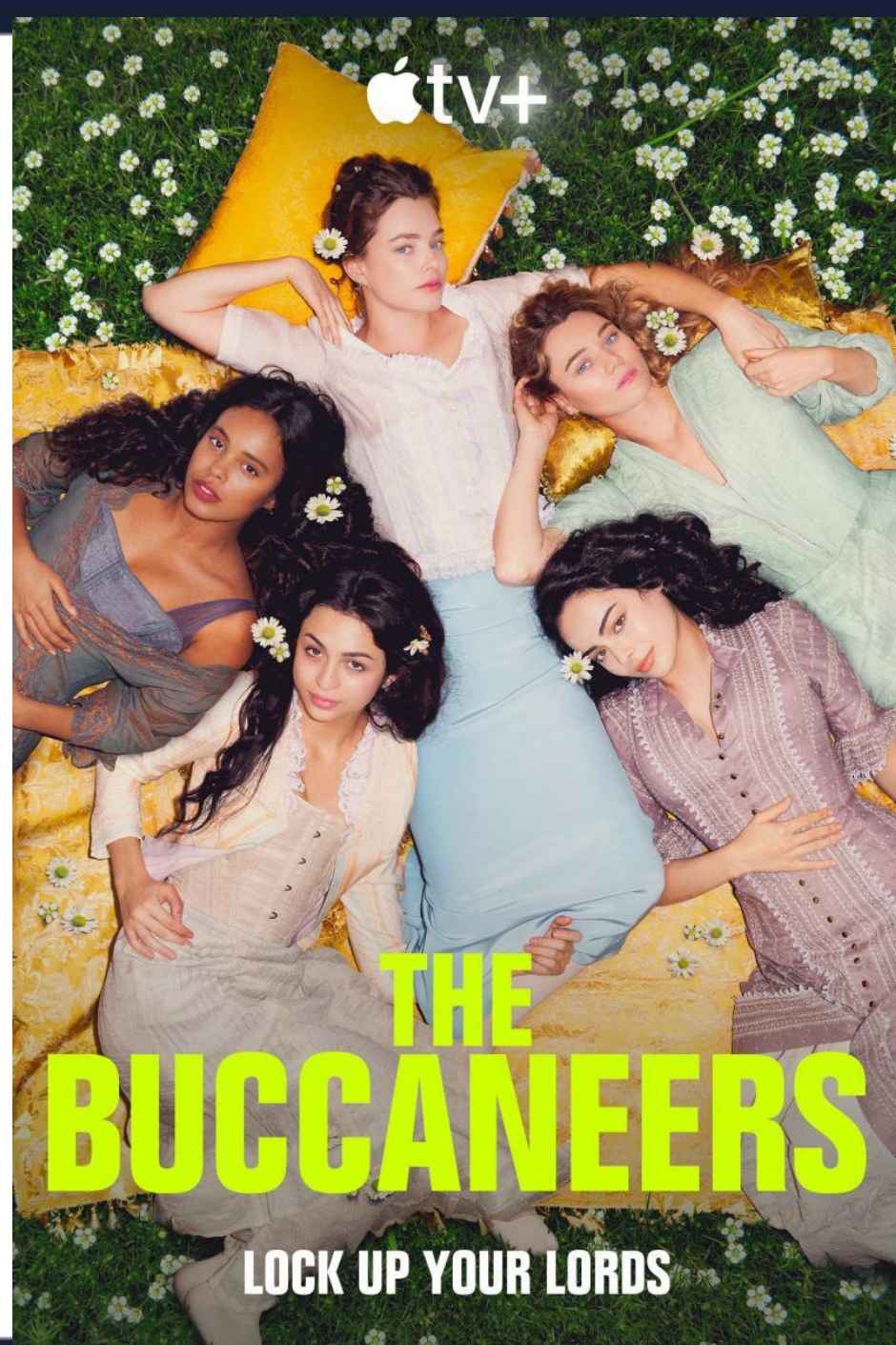
- **East Lothian films/TV**

- 50+ productions/year. 80 major dramas, including:
- The Railway Man (North Berwick, Cockenzie, 2012)
- Under the Skin (Tantallon Castle, Seacliff, 2011)
- Mary Queen of Scots (Seacliff, North Beach 2017)
- The BFG (A1 Haddington-Gladsmuir, 2015)
- Outlander seasons 1-7 (Preston Mill, Gosford, Newhailes, The Mart East Linton, Ravensheugh beach, Lochouses, Tynningame Woods, Seacliff, Hedderwick/Belhaven)
- Churchill (Newhailes, Yellowcraigs, 2016)
- Outlaw King (Seacliff, 2017)
- The Princess Switch 2+3 (Gosford, 2019-20)
- Murder is Easy (Tynningame village, Preston Mill 2023)
- The Buccaneers (Newhailes, Seacliff, Gosford, 2022)



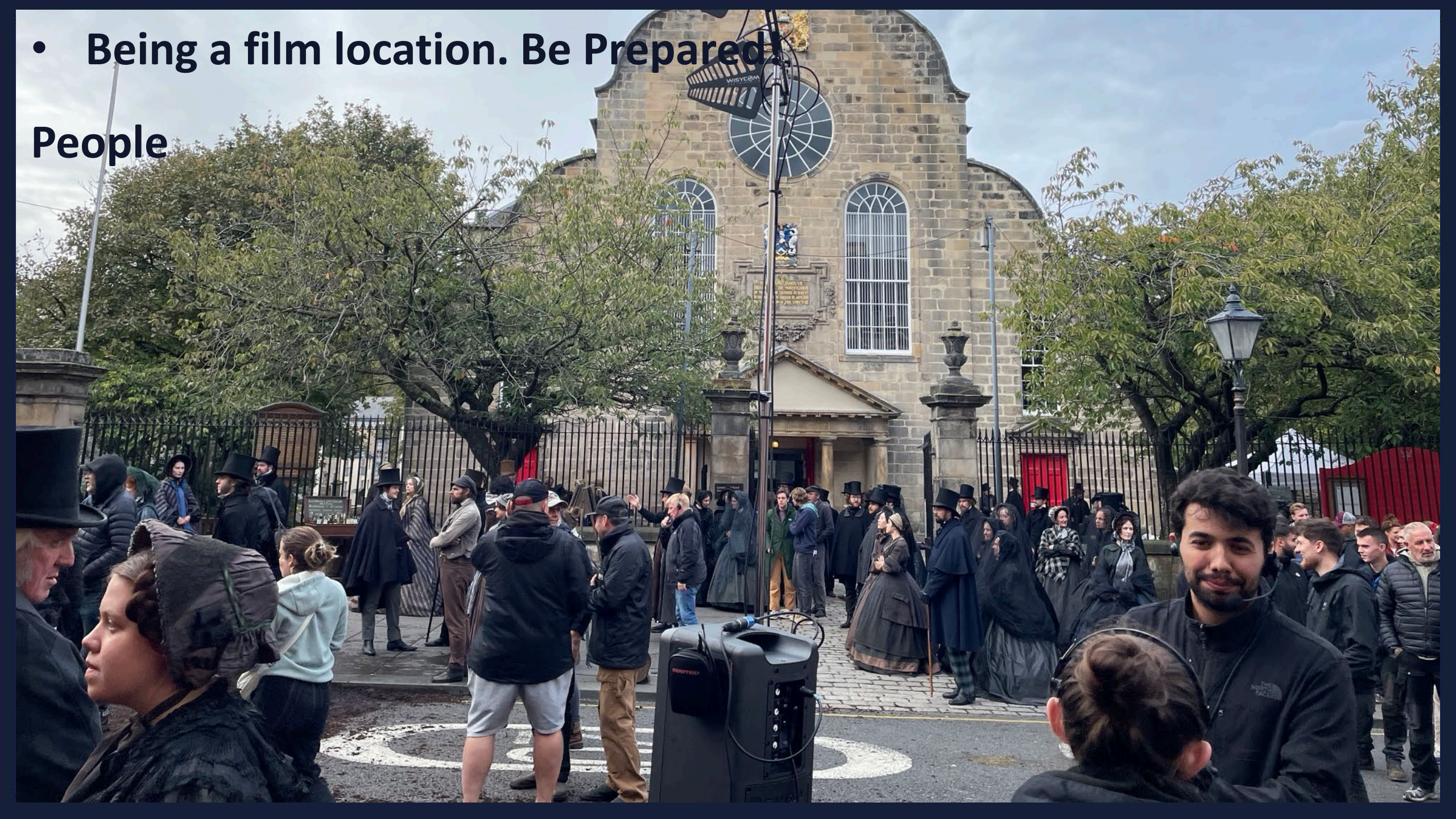
- **Process**

1. Enquiry (400/year).
2. Location suggestions and advice within SE Scotland.
3. Discuss proposals with owner(s), introduce to film team.
4. Guidance for owners about what to expect, things to consider e.g. crew size, dressing, vehicles, management, contracts.
5. Wider requirements – locations nearby, unit and technical vehicle parking, remote production bases, accommodation, traffic management, street lighting, local hires (crew/facilities).
6. Introductions to community contacts and liaison with Council services including Transport, Countryside, Communications.



- **Being a film location. Be Prepared**

People





Cameras, track, sound equipment
Greens, props...

**Cranes/cherrypickers for lighting / cameras/shade,
Ezy-ups, vans/trucks for equipment, props.
Interior: haze, lighting, cables, furniture, dressing.**



‘Tech Base’:

Vans and trucks for camera, lighting, sound, refreshments, honeywagon, generator, protection matting/coverings, ezy-ups



‘Unit Base’: mobile units for office, costume, hair and make-up, honeywagons, catering, generators



• Registering as a filming location



Filmedinburgh.org/register Register

Production companies employ the services of location managers to find the setting for their script, and location managers often contact regional film offices like Film Edinburgh. If you own, or manage, a property, you may wish to consider registering your property with us as a possible location.

Location Factsheet

[LocationFactsheet.pdf](#)

Adobe PDF - 170Kb

The Location Factsheet is full of information for you to consider before deciding to register your property. You can also [contact us](#) with any questions about the process.

How it works

We work from a script or a location breakdown and send photos to filmmakers of all the locations which might work for the production. Filmmakers also have the chance to browse our online [locations library](#) where a selection of the photos in our library are published. Being on our locations register doesn't guarantee that a company will use your property, but it does mean that it will be looked at by every production for which it could work. Similarly, by signing up, owners are not committing to accepting every production that comes up. They are simply saying they're interested and open to start a

You can register your property with us by completing this form. Once you have submitted the form we will be in touch. Our [privacy policy](#) outlines how we look after your data.

From 1 April 2019, there will be a one-off admin fee of £50 (plus VAT) for new locations to register with Film Edinburgh, to cover the costs associated with visiting and photo library management.

Please [contact us](#) with any questions you might have.

Location Details

*Name of Property (if applicable) **

*Address line 1 **

Address line 2

*Postcode **

*Area **

*Distance from Edinburgh **

*Direction from Edinburgh **

*Nearest Town **

Parking

*Unique Features **



Housing

• Registering as a filming location



Browse locations by category ▾
Browse images by feature ▾

Back to "Search Locations"

Location Categories: Georgian Residential, Large Mansions
Areas: East Lothian
Films: The Awakening, The Buccaneers, Outlander, The Princess Switch: Switched Again
Filemaker REF: 10031
Postcode: EH32 0PX
Distance: 16
Direction: E
URL: <http://www.gosfordhouse.co.uk/>

Gosford



• Registering as a filming location



Browse locations by category ▾

Browse images by feature ▾

Back to "Search Locations"

Location Categories: Cottages, Houses

Areas: East Lothian

Filemaker REF: 13143

Distance: 26

Image Categories: Courtyard

13143: 13143_courtyard3



- **Registering as a filming location**

Recces

Location manager

Location recce with location manager, director, producers and production designer

Technical recce with Heads of Department

Details of request

Contract, Insurance

Production





Thank you

- ROSIE ELLISON
- FILM@EDINBURGH.GOV.UK
- WWW.FILMEDINBURGH.ORG