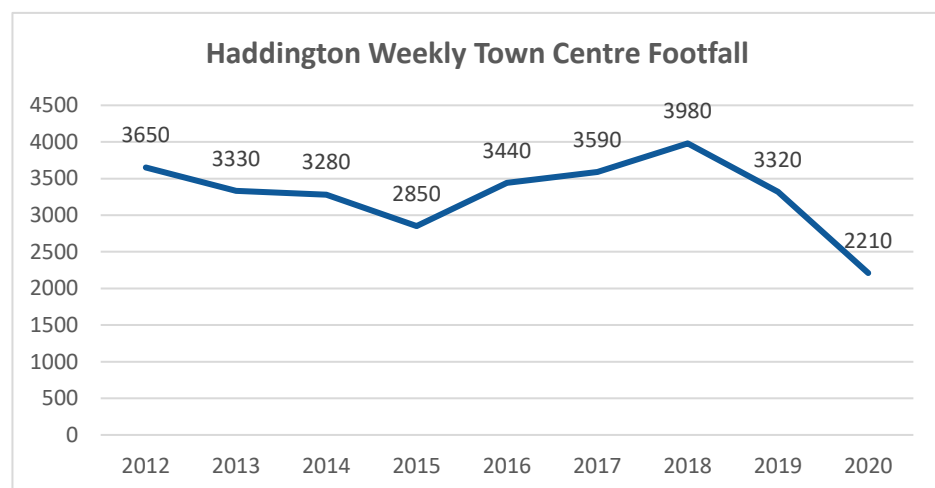


Neighbourhood and Place

- Pedestrian Market Research Services (PMRS) data showed that weekly town centre footfall in Haddington town centre fell by 33.4% in 2020, higher than the 22.2% across all East Lothian's main towns.



The 2019 East Lothian Residents survey reported that:-

- 98% of respondents in the H & L ward considered East Lothian to be a very/fairly good place to live.
- 15% of this ward felt that their neighbourhood had improved over the last 3 years, 72% felt it had stayed the same, and 8% thought it had got worse.
- 64% of respondents in the H & L ward felt that the council did the best it can with the money available, lower than the East Lothian average of 72%.
- Respondents in this ward were the least likely to agree that the council provides high quality services, does the best it can with the money available, addressed key issues in their neighbourhood, was good at listening to people's views, designed its services around the needs of the people who use them and was good at letting people know about the kinds of services it provides.

Travel and Transport

- In terms of the SIMD20 access domain, 9 of the 21 data zones in the H & L ward are within the 20% most access deprived in Scotland, 8 of which are within the 20% most access deprived in East Lothian.
- The Gifford/North Bolton/Garvald/Whiteadder data zone is the most access deprived in East Lothian.
- In this ward 3,386 residents under the age of 22 will be eligible for free bus travel from 31st January 2022.

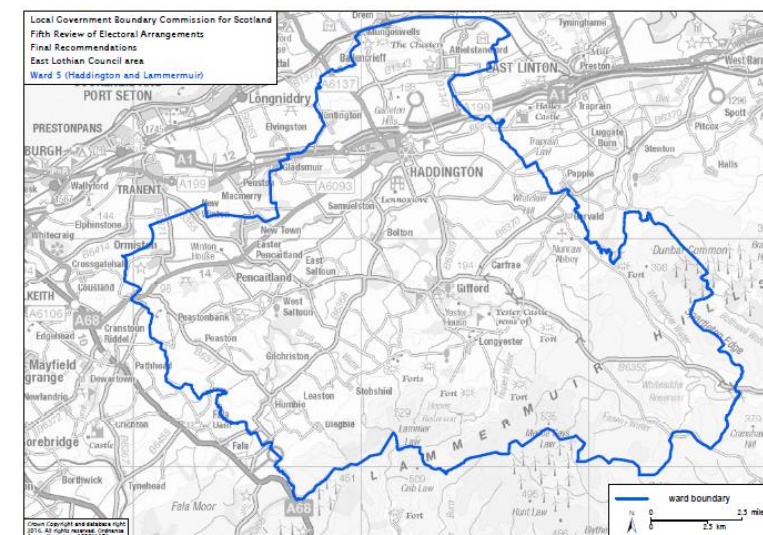
The 2019 East Lothian Residents Survey reported that:-

- When asked about the issue that most needed improving in their area, 16% of respondents opted for public transport, the highest figure of all the wards.
- 20% of respondents in this ward were dissatisfied with the bus service, the highest figure of all the wards.
- 11% of respondents felt that traffic congestion was a priority for improvement in their area, lower than the 13% across East Lothian as a whole.
- 31% of respondents felt that road and pavement repairs were a priority for improvement in their area, the highest figure of all the wards.

This Snapshot is designed to give a quick statistical overview of one of the East Lothian Council ward and support the work of the East Lothian Partnership. It is one of six ward and three area partnership snapshots that have been produced to compliment the East Lothian Profile 2020 summary.

Haddington & Lammermuir Ward by Numbers – Snapshot 2022

The Haddington & Lammermuir (H & L) ward is geographically the largest of the East Lothian Council multi-member wards and lies in the centre of the county. The Ormiston and Pencaitland data zones were added to the ward in 2016.



Population

- The 2020 mid-year population estimate for the H & L ward is 19,164 (17.8% of the population of East Lothian).
- The 2018 based population projections show a 6.6% overall increase to 19,472 in 2028 in this ward, higher than the 7.2% for East Lothian.
- NRS Population projections show that that the working age population and those aged 15 and under will reduce as a percentage of the whole in this ward and across East Lothian, whilst 65 and over will increase.

% of population aged (NRS)	H & L		East Lothian	
	2018	2028	2018	2028
0 to 15	18.0%	17.0%	18.3%	16.8%
16 to 64	60.6%	57.3%	61.7%	59.5%
65 and over	21.4%	25.8%	20.0%	23.8%

- Education Service figures which take into account local policy such as housing developments, show a 31.3% increase (2020 to 2028) for P1 to S6 pupils for the H&L school cluster.

Housing

- In 2020, 59.7% of households in this ward were classed as living in Accessible Small Towns and 40.3% of this ward were classed as Accessible rural, compared to 15.4% and 22.0% respectively across East Lothian.
- In terms of the SIMD2020 Housing domain, 1 data zone in this ward was within the 20% most deprived in East Lothian. 3 data zones were within the 20% least deprived in East Lothian.
- In 2019 there were 8,610 dwellings in this ward, equal to 17.6% of the total number of dwellings across East Lothian. The figure has shown a gradual annual increase from 17.2% in 2014.
- In 2019, 97.4% of this ward's dwellings were occupied, compared to 97.1% across East Lothian.
- In 2020, the median sale price for houses sold in the ward was £252,000, higher than the East Lothian figure of £238,000.

Deprivation in the ward

The Scottish Index of Multiple Deprivation (SIMD) 2020 identifies concentrations of deprivation in East Lothian in TWM, Preston Seton Gosford, and Musselburgh.

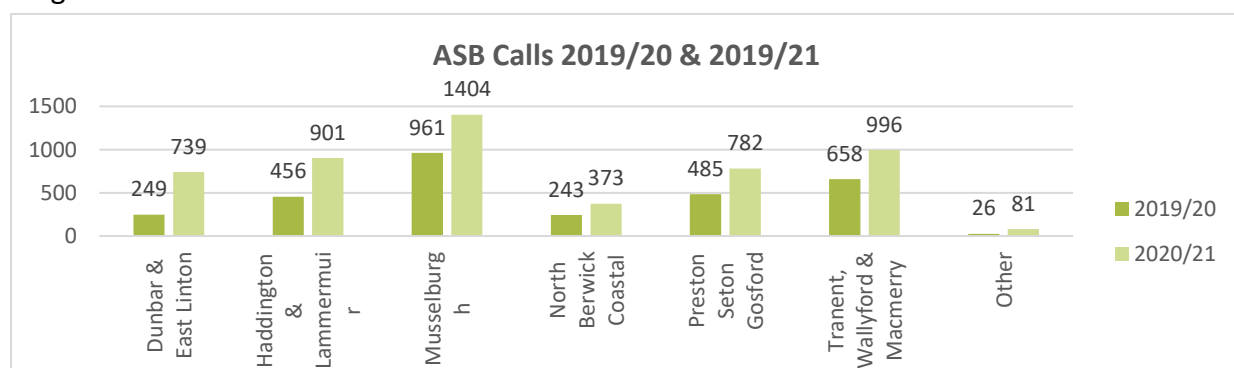
- None of the 21 data zones in the H & L ward are within the 20% most deprived across Scotland.
- 2 data zones are amongst the 20% most deprived in East Lothian.
- 2 of the 21 data zones in the ward are amongst the least deprived data zones in East Lothian and Scotland.

Income and Employment

- The SIMD2020 shows that approximately 9.1% of the population of the H & L ward are classed as income deprived – lower than the East Lothian rate (10.2%) and Scotland (12.1%). The proportion of the ward that are income deprived ranges from 1% to 20%.
- In Oct 2021, 1401 residents in this ward claimed universal credit 63.5% higher than the pre covid figure in Feb 2020, and higher than 55.1% increase across East Lothian as a whole.
- 338 UC claimants in the ward were seeking work in Oct 2021, 36.8% higher than in Feb 2020, compared to a 35.6% increase across East Lothian as a whole.
- The 2019 Residents Survey showed that 48% of respondents in this ward said that they were “Managing very/quite well” financially lower than the 54% across East Lothian. 11% of residents in this ward had an annual household income of under £12,000, compared to 7% across East Lothian.
- In 2019, 14% of children in this ward were classed as living in relative low income families, and 11% in absolute low income families (East Lothian 16% and 13% respectively).
- 7.6% of the population of the H & L ward are classed as employment deprived – lower than the East Lothian rate (8.1%) or Scotland (9.3%). The proportion of the ward that are employment deprived ranges from 1% to 15%.

Crime and Safety

- The 2019 East Lothian Residents Survey, reported that 94% of residents in this ward felt safe walking in their neighbourhood after dark, which was the same as the average across East Lothian
- 2 data zones in the H & L ward are among the 20% of data zones most affected by SIMD crime types in East Lothian. 4 data zones are in the 20% least deprived in East Lothian.
- This ward, which accounts for 17.8% of East Lothian’s population generated 17.1% of East Lothian’s Anti Social Behaviour (ASB) calls in 2020/21.
- In this ward during 2020/21, ASB calls increased by 97.6% (456 to 901) compared to 71.4% across East Lothian. A contributing factor to the increase was that calls relating to a breach of covid restrictions during lockdown were classed as ASB.



The Scottish Index of Multiple Deprivation (SIMD)

The SIMD is a tool used by the Scottish Government to identify concentrations of deprivation across Scotland in a consistent manner. It does this by dividing the country into 6,976 data zones (each averaging around 783 people).

These data zones are then ranked (with the lowest number indicating the most deprived area) against key measures of deprivation – income, education, crime, health, employment, geographic access and housing – as well as by overall deprivation.

It is important to note that the SIMD only identifies concentrations of deprivation. Therefore not all people who are deprived live in a data zone highlighted by the SIMD, and not all people living within an identified data zone are deprived.

There are 132 data zones in East Lothian and 21 data zones in the H & L ward.

Health and Social Care

Life Expectancy (Intermediate zones)	Haddington North	Haddington South	Haddington Rural	Ormiston	East Lothian	Scotland
Female	83	81.6	84.3	81.2	82.7	81.1
Male	77.2	76.7	81.8	74.8	79.1	77.2

- Life expectancy is highest in the Haddington Rural intermediate zone and lowest in Ormiston for both males and females.
- 4 of the 21 data zones in this ward are within the 20% most deprived in East Lothian in relation to the SIMD 2020 Health domain.
- In the Ormiston intermediate zone, bowel screening uptake, child dental health (P7), and emergency hospitalisations were significantly worse than the East Lothian average.
- In Haddington Rural, alcohol hospital admissions, bowel screening uptake, babies exclusively breastfed, child dental health P1, and multiple emergency hospital admissions over 65s, were all significantly better than the East Lothian average.
- In Haddington North, alcohol hospital admissions, bowel screening uptake, child dental health P7, were significantly better than the East Lothian average.
- In Haddington South child healthy weight P1, was significantly worse than the East Lothian average.
- The 2019 East Lothian Residents Survey showed that 93% of this ward took part in moderate exercise, higher than the 87% across East Lothian. However 73% of this ward took no vigorous exercise, lower than the 59% across East Lothian.

Education and Training

The SIMD Education Domain includes indicators that measure both outcomes of education deprivation, such as lack of qualifications in children and adults, and causes of education deprivation, such as absenteeism and lack of progression to further and higher education.

- In terms of the SIMD2020 education domain 1 data zone in the ward is within the 20% most educationally deprived in East Lothian and 6 are in the 20% least deprived.
- The 2017 East Lothian Residents Survey showed that in this ward 13% of this ward’s residents had a degree or higher compared to 19% across East Lothian, ‘O’ grades or equivalent were the highest qualification in 30% of households compared to 16% across East Lothian.
- In 2019/20 the pupil teacher ratio at Knox Academy was 11.9, lower than the 13.0 across all East Lothian secondary schools. For primary schools the ratio at Haddington, Athelstaneford and Pencaitland was above the East Lothian average, whilst Humble, Letham Mains, Ormiston and Saltoun were lower.
- In 2019/20, 79% of Knox Academy pupils school pupils left school with 1 or more awards at SCQF level 5 or better, lower than the 83% across East Lothian.
- In 2019/20, 88% of Knox Academy school leavers were assessed as having achieved a positive destination, lower than the 92% for East Lothian as a whole.
- The 2019 East Lothian Residents Survey showed that 56% of this ward’s residents were satisfied with local schools, lower than the 61% across East Lothian.

