



East Lammermuir Local Place Plan Consultation Report

East Lammermuir Community Council
June 2023

CONTENTS

3	Introduction	16	Emerging Themes	
4	Getting Ready	17	Green Energy Infrastructure proposals	
6	Questionnaire	20	Community Resilience	
7	Consultation Events	21	Sustainability and the Environment	
8	Spott Event	22	Protecting the character and landscape of East Lammermuir	
9	Innerwick Event	23	Roads and Paths	
10	Stenton Event	24	Protecting and preserving heritage	
11	Oldhamstocks Event	25	Environmental Impact of Existing Landfill and Cement Works	Appendices -
12	School Workshops	26	Housing	Appendix A - Flyer
13	Innerwick Primary School	27	Schools, Halls & Community Facilities	Appendix B - Welcome Boards
14	Stenton Primary School	28	Walking & Cycling	Appendix C - Spott Notes
		29	Buses and Sustainable Transport	Appendix D - Innerwick Notes
		30	Ecology and Geology	Appendix E - Oldhamstocks Notes
		31	Report Back	Appendix F -Stenton Notes
		33	Second-Round Consultation	Appendix G - School Notes
		34	East Lothian Officer responses	Appendix H - Report back to Attendees
		35	Pre Validation Consultation	Appendix J - Leaflets subsequent to Second- Round Consultation

Introduction

This Consultation Report outlines the process and findings of the East Lammermuir Community Council in preparing the Local Place Plan for the area.

The report has been prepared on behalf of the East Lammermuir Community Council [ELCC].

This report includes detail of;

- Preparation and build up to consultation
- Consultation events in Autumn 2023
- Second round consultation in Feb-March 2024

A survey was live through Autumn 2023.

Please see the East Lammermuir Place Plan Survey Report for the survey results.

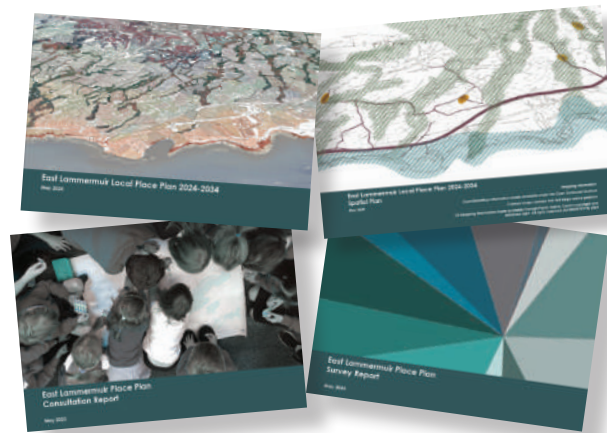
How to read this document

The East Lammermuir Local Place Plan 2024-2034 is for everyone in the community, Energy Developers, and others who are looking to work in East Lammermuir.

This document is part of a suite of documents which can be read in full or in part.

East Lammermuir Local Place Plan 2024-2034 contains an overview of the priorities of the community, and a detailed plan outlining how those priorities can be met.

East Lammermuir Local Place Plan 2024-2034 Spatial Plan - Maps showing place-based actions



This Consultation Report - details of all community consultation which has informed this Local Place Plan.

Survey Report - full anonymised analysis of the online and paper survey

Together these documents form the evidence base for this Local Place Plan.

Getting Ready

Preparations began in Mid-August 2023, to kick-off the consultation process for the Place Plan.

To effectively reach and engage with everyone in the community, the Community Council planned;

- A bespoke questionnaire for local people - to open early September. This would be accessible online, through proprietary survey software, plus through paper copies available at village halls, to maximise accessibility.
- Local afternoon/evening drop-in events where physical maps can be drawn and written on week commencing 18 September.

Four events were planned, one at each of the villages, at times which spanned the working day and the evening, to maximise opportunity for all sectors of the community to engage;

- Spott Village Hall
- Innerwick Village Hall
- Stenton Village Hall
- Oldhamstocks Village Hall

The Chair reached out to the Head of the two Primary Schools, who invited facilitators to speak to all classes at the schools, on the same day as the events;

- Innerwick Primary School
- Stenton Primary School

A meeting was held on Tuesday 29th August in Oldhamstocks by the Community Council Chair, inviting potential facilitators to discuss the consultation.

Issues discussed included;

- Thinking through the purpose and process to follow
- Planning the four events for week commencing 18th September
- Devising the questionnaire
- Clarifying the intention - to ensure that people who will be affected learn about proposals that are coming forward, and that the views of those people are presented in a way that gives the best chance they will be listened to, heard and acted upon.



Getting Ready

A meeting was held on Thursday 14 September in Innerwick Village Hall, for volunteer facilitators.

The agenda focussed on the role of the facilitators, providing good coverage for the events, the importance of recording images and words, and the format of the events.

Maps were unrolled, and groups quickly formed and began discussions around the tables.

MAPS

Large format maps were organised and printed at a range of scales.

Outline format for events was discussed:

- Welcome Boards and explanation of session
- identify local problems/opportunities
- postcard to a friend from ten years in the future
- how do we get there - Themes - table discussions
- develop spatial plans

DATES AND TIMES OF EVENTS

Spott - Tuesday 19 September afternoon into evening

Innerwick - Wednesday 20 September 15.30 - 21.00

Oldhamstocks - Afternoon / evening Thursday 21 September

Stenton - Afternoon / evening Thursday 21 September

PROPOSED TIMING IN MORE DETAIL - INNERWICK

Proposed timing in more detail - Innerwick

15.30 - 17.30 Engagement and planning session

17.30 - 19.30 Engagement and planning session

19.30 - 20.15 AGM and EGM

20.15 chance to review products of earlier discussion and add comments

ADVERTISING

Flyers were created by members of the Community Council, and distributed to all households in the area, urging all to fill in the questionnaire, attend the events, and be involved in shaping the plan for the area.

The flyer was distributed 7-14 days prior to the events.

Posts were placed on relevant Facebook groups.



Getting Ready

Gathering Information

Reporting Back

Drawing up the Place Plan

Submit LPP to ELC

Questionnaire

Local Community Councils in Dunbar and (separately) Dunpender had prepared questionnaires for their local populations to inform their own local place plans. These were generously shared as editable documents, and members of the community council with other local volunteers with relevant experience amended the Dunpender questionnaire to fit the needs of East Lammermuir.

Content was signed off by the ELCC prior to going live on line using an interactive document, and printed copies were placed in each of the four village halls for people who prefer that means of responding.

To date [21st October 2023] 74 no. questionnaires have been completed and recorded.

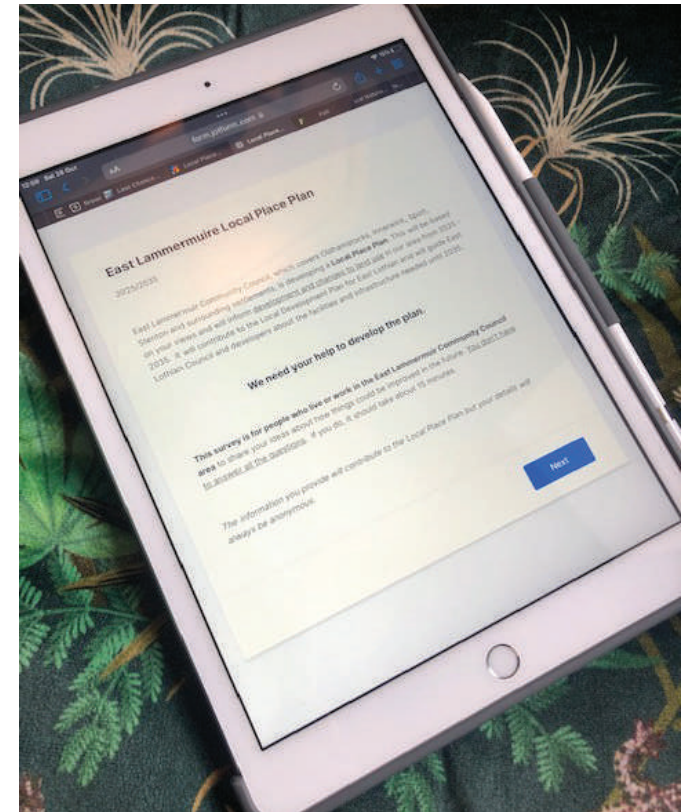
The survey results note a range of views from the community, which broadly align with the detailed concerns we heard from the consultation events.

A number of detailed actions for maintenance and safety around specific streets and roads has been noted, and will be collated into an overarching strategy.

The views and comments from the questionnaire will be analysed in more detail.

Quotes and suggestions have been integrated into the wider 'Emerging Themes' pages within this report.

NB Survey results are to be analysed in detail



Getting Ready

Gathering Information

Reporting Back

Drawing up the Place Plan

Submit LPP to ELC

Consultation Events

The events were well attended, with a range of people able to take the time to deeply engage with the process and communicate the range of issues and opportunities for the area.

See Appendix A for Welcome Boards produced for the events.



Spott Village Hall



Innerwick Village Hall



Oldhamstocks Village Hall



Stenton Village Hall

Getting Ready

Gathering Information

Reporting Back

Drawing up the Place Plan

Submit LPP to ELC

Spott Event

Spott Village Hall
20th September 2023
7 attendees



QUOTES

"How long will this energy infrastructure be here?"

"Once it's gone - it's gone! (Landscape)"

"We're blessed with Iron Age sites around here but there's nothing known about it"

"I don't want my quotes to be used as part of the Place Plan when things happen anyway"

"We took the money [Community Benefit] because it was there but we didn't really agree with it"

"I took the kids across the A1 into Dunbar, it was really scary"

"Industry and Councils should be better at telling people about decisions and what they are doing"

"An underpass rather than a bridge across the A1"

Please see appendices for a full list of Issues and Dreams

Getting Ready

Gathering Information

Reporting Back

Drawing up the Place Plan

Submit LPP to ELC

Innerwick Event

Innerwick Village Hall

20th September

11 attendees

QUOTES

"We've been handed a fait accompli [of Green Energy Infrastructure]"

"It makes my blood boil"

"Innerwick are getting nothing from any of it"

"We should be the wealthiest council in Britain"

"We need to be forceful"

"Is the waste mountain going to reduce?"

"What do we do with the wind farm machinery when it is time to recycle?"

"We are always the last to know"

"Storing batteries in containers, will these be safe?"

"Children can't move around safely"

"We should engage with the developers and contractors to create a training opportunity"

"You can't put a monetary value on some things"

"How can we be better informed, and get consolidated information?"

"Will this infrastructure be the end of it?"

"Who is actually listening?"

"It's the industrialisation of Innerwick"

"Valencia gave no personal reply to people in Innerwick, SEPA have given no reply and referred us to ELC"

"Community gardens are a great idea"

"The church building as a community hub is a great idea"

Please see appendices for a full list of Issues and Dreams



Getting Ready

Gathering Information

Reporting Back

Drawing up the Place Plan

Submit LPP to ELC

Stenton Event

Stenton Village Hall

21st September

QUOTES

"It's very nice up there, who wants to walk through a windfarm?"

"We hear the children playing!"

On a local shop "You need a volume of people, it wasn't happening"

"The days of the local shop are gone"

"I leave my car in East Linton to get the bus to Edinburgh"

Please see appendices for a full list of Issues and Dreams



Getting Ready

Gathering Information

Reporting Back

Drawing up the Place Plan

Submit LPP to ELC

Oldhamstocks Event

Oldhamstocks Village Hall

21st September

QUOTES

“The local community needs to be compensated for disturbance and inconvenience. What would happen if the A1 was shut and local traffic diversions were in place?”

“There is a need for safe crossings on A1 between Cockburnspath and Spott roundabouts”

“Crossing at Torness, it does not feel safe to walk, cycle, push a pram”

“If they are building haul roads, the roads could be left as offroad walking paths.”

“The last Oldhamstocks village shop was around 30 years ago.”

“Interrupted power supply an issue. “

“The Government should work with community to plan major infrastructure projects and a citizen’s assembly would be useful.

“A good opportunity to keep church in community”

“The Village Hall needs to be upgraded, there are issues with the live planning application which has been recommended to be withdrawn”

“What services are needed to enable people to remain here?”

Please see appendices for a full list of Issues and Dreams



Getting Ready

Gathering Information

Reporting Back

Drawing up the Place Plan

Submit LPP to ELC

School Workshops

The Community Council were invited to speak to the pupils at the two Primary Schools in the area, Innerwick Primary and Stenton Primary.

Facilitators spoke to all pupils in their classrooms, using age-appropriate tools to open a discussion about what the pupils like, don't like, and want to see in the future.

The children had a strong understanding of the place they live, and the importance of making places that are welcoming and safe for everyone in the community.

Please see appendices for detailed notes



Getting Ready

Gathering Information

Reporting Back

Drawing up the Place Plan

Submit LPP to ELC

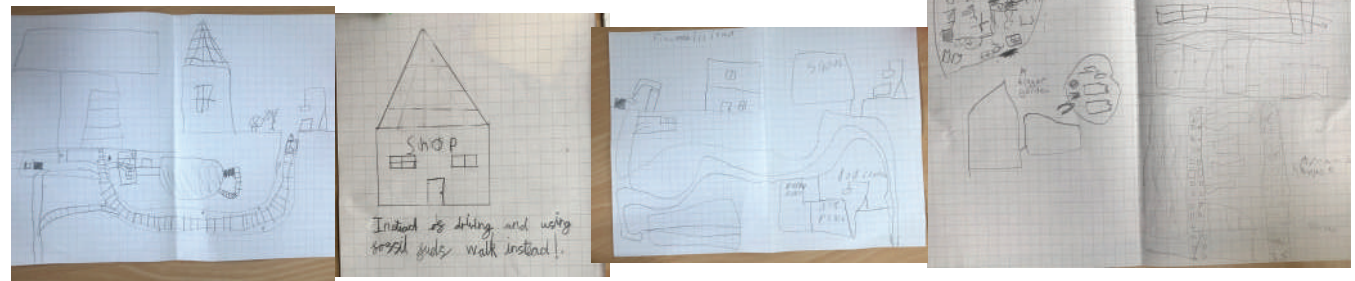
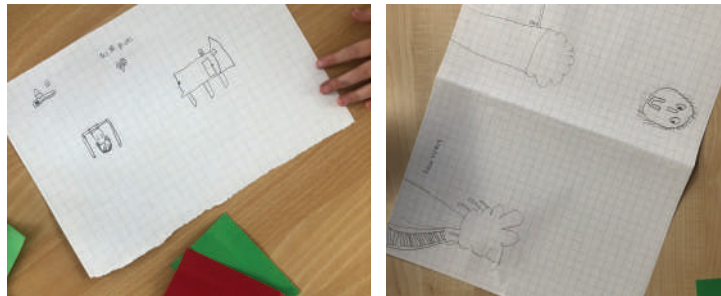
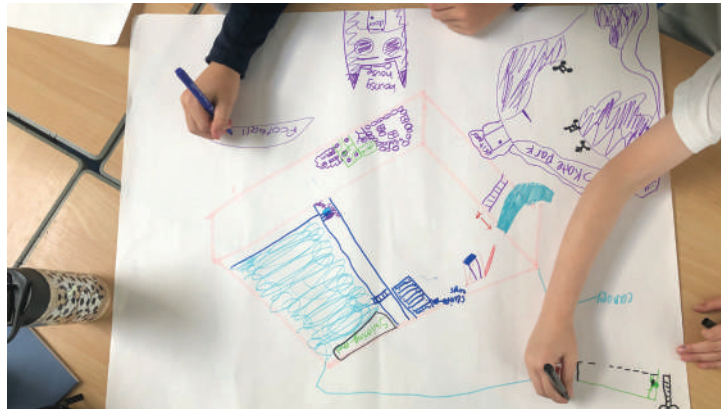
Innerwick Primary School

We spoke to each of the three classes, the pupils were engaged and interested in letting us know what they think about where they live. The pupils gave detailed notes on

- how they get to school
- where they like to visit
- places they like around the village
- what they would like to see happen in the future

The older pupils were asked to design an option for the design of the substation. Many suggested landscaping, or using the roof of the infrastructure to create a community place.

Please see appendices for detailed notes



Getting Ready

Gathering Information

Reporting Back

Drawing up the Place Plan

Submit LPP to ELC

Stenton Primary School

We spoke to the single multi-age class, where the pupils understood how to map where they live, and the importance of having a safe, welcoming home.

The pupils mapped where they live, and gave detailed information on

- areas where vehicle speeds made them feel unsafe
- areas where they love to walk
- outdoor places where they enjoy seeing wildlife
- places to meet

The pupils were asked to design a place for their community, many drew outdoor places where everyone could meet, play and relax.

Please see appendices for detailed notes



Getting Ready

Gathering Information

Reporting Back

Drawing up the Place Plan

Submit LPP to ELC

Stenton Primary School



Getting Ready

Gathering Information

Reporting Back

Drawing up the Place Plan

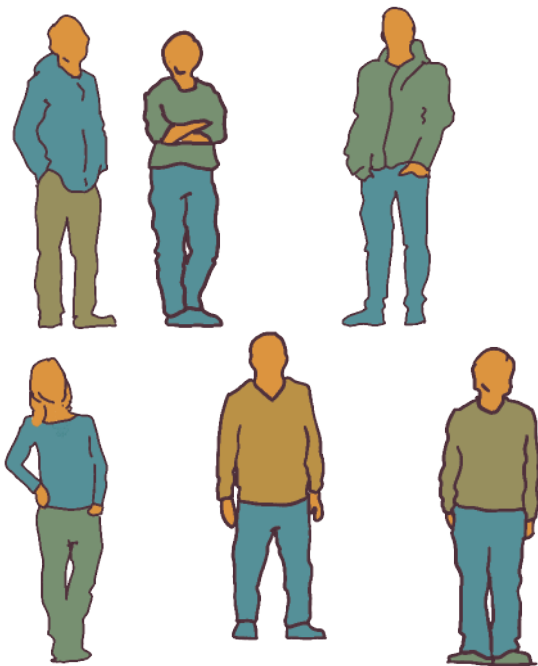
Submit LPP to ELC

Emerging Themes

Summary

The emerging Themes from the face-to-face events and questionnaires begin to paint a picture of the East Lammermuir region, the concerns and priorities of the community.

Most comments relate to the adjacent, overlapping issues, which have been arranged to roughly illustrate the number of comments on each topic.



Emerging Themes

Green Energy Infrastructure

The comments and quotes from the consultation events and questionnaires revealed strong feelings and emotions.

The main concerns are summarised below;

- the perception of an unfettered and uncontrolled goldrush around the grid connection,
- deep concern about disruption to traffic and the environment during the construction period,
- poor communication and lack of a collated plan from the developers
- concerns about unknown risks and lack of controls and safety concerns once the infrastructure is in place,
- cumulative impact on the landscape, ecology, and geology,
- lack of a collated programme of planning applications or works
- other environmental concerns which are covered by the EIA

ISSUES

Lack of early dialogue with ELC / Scot Gov / developers regarding energy infrastructure

Little attention to landfill fire until the wind turned over Dunbar

Security risk, power structures could be targeted

Controlling developers once things are in place(eg landfill too big and goes on fire)

Lack of evidence regarding local employment opportunities from the electrical work

Air quality

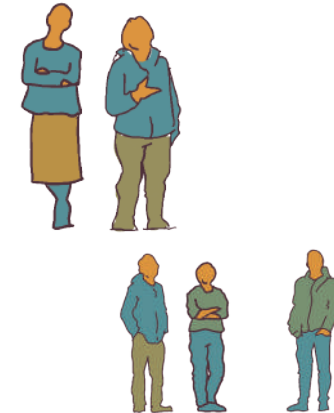
Innerwick not benefiting from any power source - all goes to England

All focussed on one area - landfill, Torness, incinerator, LaFarge, now also the substation

Will the energy companies commit to jobs and opportunities to young people locally - EDF scheme is good

Siting of the battery farm - quality of land taken

It is absolutely outrageous what ELC and Scottish Government have planned and acknowledge they have planned for the whole of East Lothian over the next 20 years.



Getting Ready

Gathering Information

Reporting Back

Drawing up the Place Plan

Submit LPP to ELC

Emerging Themes

Green Energy Infrastructure

QUOTES

"No prior consultation"

"We've been handed a fait accompli"

"It makes my blood boil"

"Innerwick are getting nothing from any of it"

"We should be the wealthiest council in Britain"

"We need to be forceful"

"What are the options for recycling the energy plant, batteries etc?"

"1.5% of revenue budget should be made available as community benefit"

"What do we do with the wind farm machinery when it is time to recycle?"

"Storing batteries in containers, will these be safe?"

"Engage with the developers and contractors to create a training opportunity"

"You can't put a monetary value on some things"

"We need a limit to the industry that is coming to the area and coastline, bringing with it a huge impact on the road infrastructure and no of vehicles on the narrow country roads."

"Reduced speed on roads from wind farm traffic please"

"Constant windfarm traffic increases pot holes as well as litter."

"Very concerned about the amount of infrastructure that is planned for this area and the effect on transportation and visual impact etc. I do not feel this is a transparent process- the developers seem to have managed to confuse- at least me - with 1000 of pages of technical details and ELC appear to be pretty silent on the subject."

"How can we be better informed, and get consolidated information?"

"Will this infrastructure be the end of it?"

"We don't want a pat on the head, wee country bumpkins"

"Is it because we're a dumping ground?"

"Who is actually listening?"

"It's the industrialisation of Innerwick"

"Start protesting!"

"Come up with clear asks"

"How long will this energy infrastructure be here?"

"Any further developments of industrial scale should have a minimal impact on the day to day survival of villages"

"The related buildings and transformer stations should be designed to blend in tastefully with the environment. Finally, the development of green energy should bring financial benefits to the communities affected, rather than payouts to individual residents."

"Less disruption by large corporations using our area for their own greed"

"No more dumping heavy industry in this part of East Lothian. Individual support to the households that live in the area and are affected by the noise, uncontrolled fires, heavy works traffic, roads being pot holed, litter, changes to the landscape. Rather than offering community grants offer direct support.our landscape and disruption to our way of life."



Getting Ready

Gathering Information

Reporting Back

Drawing up the Place Plan

Submit LPP to ELC

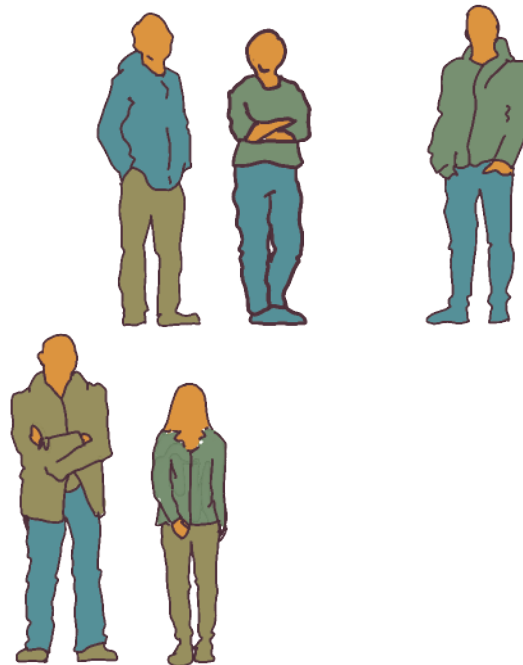
Emerging Themes

Green Energy Infrastructure

Discussions and consultation are ongoing with the Green Energy Infrastructure developers, and other stakeholders on the process, including MPs, Councillors, and departments within the Scottish Government and East Lothian Council.

A meeting was held on October 25th, where the ELCC Chair summarised the concerns and dreams that emerged through the consultation process.

A short summary document was produced on behalf of ELCC 'East Lammermuir Place Plan Consultation Summary Report: Focus on Green Energy Concerns' which has been issued to all stakeholders, to inform ongoing discussion.



DREAMS

Meaningful consultation and joined up approach to developments

Information about the long term impacts - including how to recycle the infrastructure

A balance between energy infrastructure and visual impact to a previously rural area

Planning traffic management - with advance communication on many channels, to be agreed with the community

Understanding of the environmental impact on the landscape and coast.

Energy companies commit to jobs and opportunities to young people locally

Charter which commits the developers to ongoing, meaningful consultation and information sharing.

Balance between energy infrastructure and environmental impact

ELC must stop hiding behind inappropriate processes and legislation and start actually supporting the local communities in what is the biggest proposed industrial development ever in East Lothian.

The Government should work with community to plan major infrastructure projects and a citizen's assembly would be useful.

Getting Ready

Gathering Information

Reporting Back

Drawing up the Place Plan

Submit LPP to ELC

Emerging Themes

Community Resilience

Many comments and discussions touched on or centred the importance of community resilience, meaning the capacity of the community to withstand or to recover quickly from difficulties.

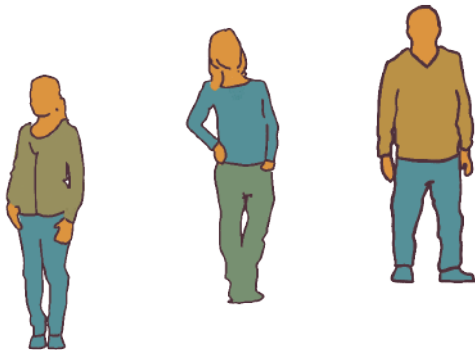
This umbrella term covers community support for vulnerable members, community events and places where people can meet, information sharing across and between communities, and the importance of a balanced population.

ISSUES

Devaluation of housing and the health issues involved in the long term, both mental and physical

Mental health and isolation is a problem.

Lack of facilities for young people Insulation and energy generation for older properties



DREAMS

A local shopping opportunity in the Stenton area would be fantastic.

Communities must be able to thrive - in an increasingly technologically driven society, local communities should be able to regularly come together

Greater infrastructure building - healthcare commercial and education as well as new houses

Opportunities for small businesses in rural areas
More linking of the communities through shared events to build social networks for both the young and old. Greater connectivity through paths and community spaces for recreation.

Support for local businesses

More resources for families and the elderly-play parks, children's clubs/activities, social events.

Access to local recreational and social activities at low or no cost to combat social isolation and foster community cohesion.

Strong community groups and greater resilience....strengthen school/community links.... make use of all premises, especially the old school...

Keep the Flower Show going

Better broadband

Some way for old folks to stay in their own homes as long as possible (public transport, support network, carers etc)

Rural fuel inequalities addressed improved

Access to NHS facilities including dentistry.

Proper investment in infrastructure with fibre optic coverage and faster and more reliable internet coverage to properly support rural businesses and the community.

More social activities in villages attended by local people

Improved digital connectivity

Getting Ready

Gathering Information

Reporting Back

Drawing up the Place Plan

Submit LPP to ELC

Emerging Themes

Sustainability and the Environment

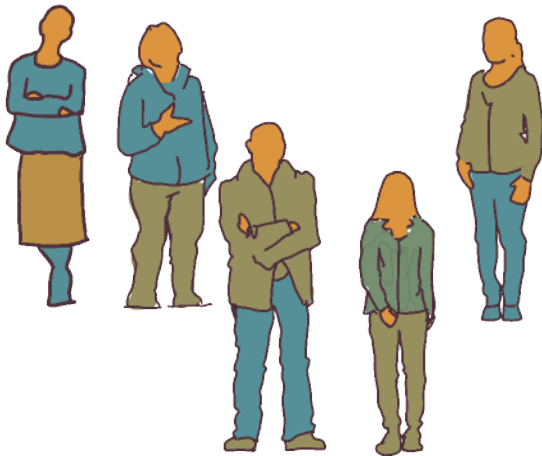
This theme includes comments on environmental factors and the opportunity to address the climate emergency and fuel poverty.

ISSUES

Who is responsible ultimately? - Scottish Govt / Local Council / SEPA

“What are the options for recycling the energy plant, batteries etc?”

“What do we do with the wind farm machinery when it is time to recycle?”



DREAMS

Renewable energy sources like shared ground source heat systems.

More electrical car charging - there are many properties for which driveway charging is not an option

All homes to have fully funded energy conservation / reduction measures fitted by community benefit” means from all energy development.

Making sure there is a net improvement rather than deterioration of where we live

An Innerwick that makes its full contribution to combatting climate change - so all premises well insulated,..and an innerwick that has benefitted from all the construction works in the area with the electricity cables and wind farms.

Coherent plan for Net Zero

Decarbonise heating of homes, ie away from oil

Village heating generation

The majority of homes with better insulation and greener heating systems. This will start with “Insulate Innerwick”, and use the lessons learned in the other areas.

1. Working with the community, raising awareness and knowledge of what can be done, particularly “fabric first”, and encouraging volunteers.
2. Surveying properties
3. Cooperating with East Lothian Council and East Lothian Housing Association
4. Accessing all current government finance schemes, and advice services
5. Packaging like properties for improvement in order to lower costs
6. Accessing grants from windfarms and other bodies.

Getting Ready

Gathering Information

Reporting Back

Drawing up the Place Plan

Submit LPP to ELC

Emerging Themes

Protecting the character and landscape of East Lammermuir

The unique, beautiful and valuable landscape of East Lammermuir is a source of community pride, as well as a key reason people love living in the area.

Many of the other themes touch on the importance of access to and protection of the landscape.

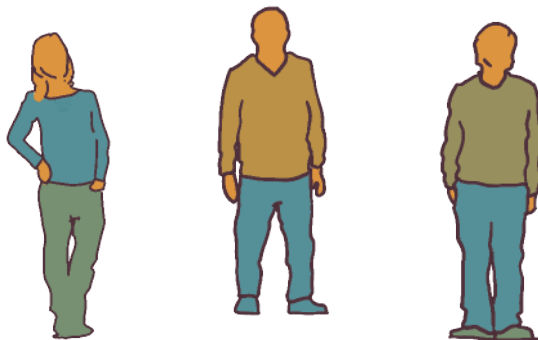
ISSUES

"Once it's gone - it's gone!"

Loss of farmland

Loss of scenery

"It's very nice up there, who wants to walk through a windfarm?"



DREAMS

"Visitors to rural areas should follow the Countryside Code at all times...."

"More tree planting"

Greater enhancing biodiversity by linking hedgerows and woodland areas with planting.

Greater understanding of the unique biodiversity of the area and targeted projects to keep this and foster more habitat for a greater number of species.

More community gardens, orchards and woodland for sharing.

A community garden, allotments, orchard and safe place for children to play

Be recognised as its own "burgh" type area.

Eg. Welcome to East Lammermuir signs
Promoting tourism more to encourage more people to visit this beautiful countryside and towns and villages which will support the local economy. Tourism in the area will stop entirely with the current plans for the area.

Prefer minimal change to a quiet pleasant area
More sympathetic planning dept re "small local domestic " applications given planning depts apparent willingness to approve big power schemes and their associated chaos

Restoration offer development (eg narrowing roads to return them to original state)

Getting Ready

Gathering Information

Reporting Back

Drawing up the Place Plan

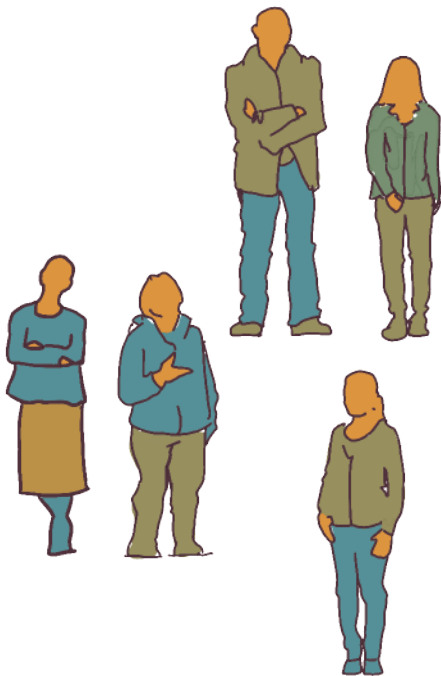
Submit LPP to ELC

Emerging Themes

Roads and Paths

- Improving safety, maintenance and access, throughout construction periods

Comments on the general state of roads and paths are captured here. Detailed concerns about key areas and accident hotspots or places 'waiting for an accident' have been collected and inform the draft action plans.



ISSUES

"I took the kids across the A1 into Dunbar, it was really scary"

"Canon gate bridge is poor state of repair and used as a diversion when A1 is closed"

"Location of the weigh station [in Spott] and enormous vehicles"

Construction traffic - damage to already poor and rural roads

Spott Road is busier and busier

No diversions through Spott (Canongate bridge is not up to large HGVs) when the A1 is shut at Spott/Dunbar

The roads are already dangerous without the planned increase in traffic. Public transport is non existent outside the villages so we are over-reliant on cars.

There is a particularly dangerous bend near Bilsdean (going south). Many accidents and near misses

Will Bilsdean Road be used during construction?

DREAMS

"An underpass rather than a bridge [across the A1]"

Road improvements / maintenance is needed
Create and enforce a 20MPH limit near homes,

Use speed reducing measures like chicanes

Safer junction at Linkhead farm A1 exit towards Oldhamstocks

Make the roads safer - passing places, fix the potholes and lack of the side of a road (a drop of a 6 inches or more in several places), safe pedestrian / bike crossing of the A1.

Improved road conditions to cope with increased traffic and size of vehicles Most of our roads are in a dreadful state and without appropriate speed restrictions.

A1 upgraded to dual carriage way.

Safety at A1 junctions for drivers

Better provision for cars turning off the A1 - longer ramp

Getting Ready

Gathering Information

Reporting Back

Drawing up the Place Plan

Submit LPP to ELC

Emerging Themes

Protecting and preserving heritage

The importance and value of the historic character of the settlements and their setting was the subject of comments and discussion.

East Lammermuir contains a number of Conservation Areas and listed buildings, as well as scheduled ancient monuments and non-designated heritage assets.

ISSUES

"We're blessed with Iron Age sites around here but there's nothing known about it"

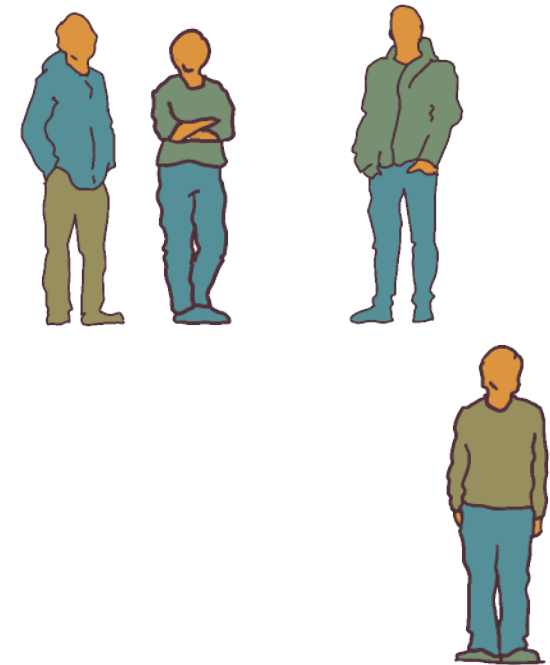
Lack of knowledge of archaeology in the existing landscape

Saving our historic buildings and village history

DREAMS

"The church building as a community hub is a great idea"

"Protection of the historic villages - historic buildings should be retained, growth should be considered in the overall scheme of the village, views, especially to the sea, should be protected and roads shouldn't be made busier through industrial traffic. These are close knit, quiet rural villages."



Getting Ready

Gathering Information

Reporting Back

Drawing up the Place Plan

Submit LPP to ELC

Emerging Themes

Environmental Impact of Existing Landfill and Cement Works

The context of the recent fire at the Valencia landfill site prompted several comments and discussion about the future of the landfill, its presence, and risks surrounding the facility.

The Tarmac Works was also the subject of comments.

ISSUES

“There were flies everywhere, they need to feed the incinerator”

“Is the waste mountain going to reduce?”

No information on the fire until it hit Dunbar, Valencia gave no personal reply to people in Innerwick, SEPA have given no reply and referred us to ELC

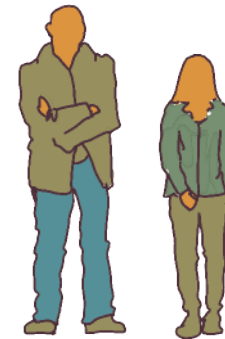
Valencia rubbish tip. Pretty appalling and it seems to have grown in size (plus the fire which burned for 4 days). Are Sepa holding them to account?

DREAMS

No more recycling plants or landfill sights that go on fire and cause eye issues for locals when there are fires but no staff to put them out.

Perhaps SEPA to monitor the cement works that pollute the whole making it very unhealthy for locals. A concrete works should NEVER be allowed to monitor air pollution themselves! Also thought given to nature and the need to destroy areas with more and more and more ad infinitum HOUSING stopped!

Have a proper emergency action plan in place and contact all households in area directly should there be a public health emergency rather than slow response via third hand social media

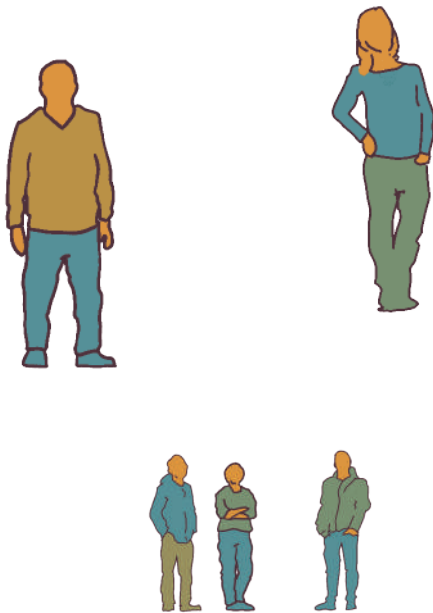


Emerging Themes

Housing

- currently allocated areas, and future housing needs

The topic of housing covers existing needs, and concerns surrounding allocated yet undeveloped sites, and balancing the needs of the existing community and temporary workers who will require housing in the near future.



ISSUES

'Shifting who lives here will change the feel of the village'

"Stop or significantly reduce large scale housing development on open country and farmland."

"Supply more low cost housing in rural areas to encourage families to move out of towns"

Pressure on farmlands by new development

Housing for workers is needed, but where?

Activities for youth - balancing the needs of the wider community

All vacant properties will become long lets for construction workers?

DREAMS

More local shops please

Less new houses except council owned

More housing - preferably social housing below either Manse View or Kirk Brae (we need slightly larger population)

Any new developments should be eco friendly designs though modern should be sympathetic to local buildings and countryside.

At least pause house building until the infrastructure and medical facilities are sufficient.

Medical adaptations to homes

Care and repair services



Emerging Themes

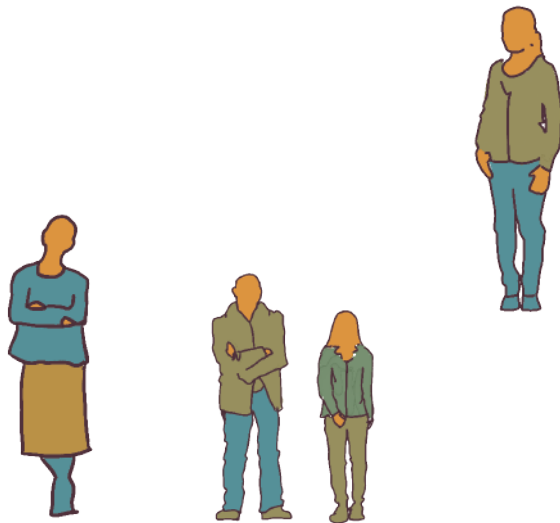
Schools, Halls & Community Facilities

- creating new, improving and protecting the existing

Community facilities and schools were identified as key to a thriving community.

All village halls have their own identity and focus, and are perceived as great facilities.

The local primary schools are seen as essential, both for the younger generation who attend as pupils, and as a wider signifier of a mixed and resilient community.



ISSUES

'The education focus is changing'

"We hear the children playing!"

On a local shop *"You need a volume of people, it wasn't happening"*

"The days of the local shop are gone"

DREAMS

"Enable Stenton to have more pupils."

A mobile library

Work and leisure opportunities for young people and better access to them

Subsidised classes in the village hall

"For the younger generation, ensuring they can connect with their larger peer group in a safe way without reliance on cars/ buses - I believe this is essential"

Increase funding for village halls in the area to help with running costs

Keep Spott Church open

Community hub/garden/social space

New or upgraded village halls

Clean, safe and comfortable environment to meet for local community [Oldhamstocks]

Getting Ready

Gathering Information

Reporting Back

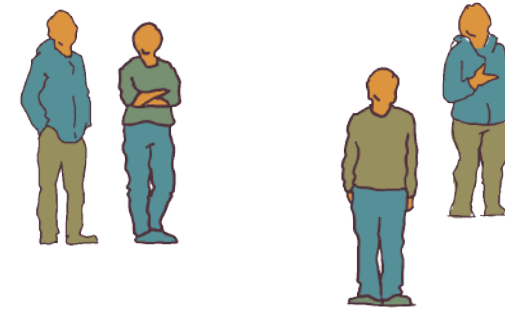
Drawing up the Place Plan

Submit LPP to ELC

Emerging Themes

Walking & Cycling

Each event prompted discussion on the challenges of walking and cycling in the area, both within the settlements, within the wider landscape, and to key destinations.



ISSUES

'Children can't move around safely'

Road safety

Access to the village, poor lighting, poor egress

Dangerous junction, plus disruption

Walking / cycle paths

Roads are dangerous to walk / run / cycle on- full of potholes, roadkill, no sidewalks or pavements

Concerns still over speed limit on old A1 (60mph) to Quarry Gate and down to Skateraw Harbour also same speed limit.

Need for safe cycling and walking routes

Access over the A1 - poor visibility

DREAMS

Improving links between villages, the coast and countryside within East Lammermuir and beyond

"It would be great to see a safe cycle and walking path from Stenton to connect into the Dunbar and East Linton cycle network."

A Cycle Path that connects one side of A1 to the other (underneath) - which would be fairly easy to do.

It would allow safe walk/run/cycle way under A1 and would make a good link

Safer routes to school

Getting to the beach without using a car

Active travel route between Stenton and Gifford

Improvements to walks and cycle loops to Pressmennan Woods, inspired by the improvements at Spott

Improved and additional walking routes

Integrated cycle / walkways between villages

Ways of better connecting Dunbar with our rural and coastal communities

Joined up cycle path as it seems to jump from one side off A1 to other and in some places just stops!

Footpaths through fields and woods, cycle paths and safe routes near our busy roads. At the moment we suffer many of the disadvantages of a rural area and, through industrialisation and intensive agriculture, none of the perceived advantages. In spite of right to roam.

Improved Active Travel network – including existing paths like Dunglass

'Core paths plus'

Getting Ready

Gathering Information

Reporting Back

Drawing up the Place Plan

Submit LPP to ELC

Emerging Themes

Buses and Sustainable Transport

- Improving services between villages and towns within East Lothian

Many comments on public transport touched on the infrequent, irregular service.

Ideas and solutions to improve connectivity across and beyond the area were also received.

ISSUES

"I leave my car in East Linton to get the bus to Edinburgh"

We need decent and affordable public transport [Oldhamstocks]

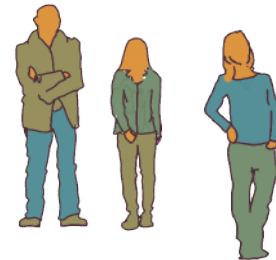
the 253 border bus no longer serves the communities of Oldhamstocks, Birnie Knowes, Bilsdean and Dunglass etc it is now re-routed down the A1 to Cockburnspath saving less than 5 minutes on the journey time but removing a vital link for local communities now isolated from accessible public transport.

Electric Chargepoint in Innerwick is not good, difficult to access and use

Public transport - put routes past houses

Buses especially an issue for young people

No bus [from Oldhamstocks] to take people to work for 8 or 9am



DREAMS

Community transport – PINGO

Better (more frequent) transport

A new bus route linking Dunbar, Stenton and East Linton, timed for the trains and bus links to Edinburgh.

"Better public transport. The current bus service from Stenton doesn't service potential users needs. It therefore doesn't attract many passengers."

Good public transport options, including electric car pools, on demand buses, etc

Access to school bus provision

More electrical vehicle charging points

Reintroduction of Sunday service of 253

Some equivalent to dialabus/shared taxi service in the evenings, especially during the summer and the Edinburgh Festival.

Extension of the Pingo bus service extended to Oldhamstocks to include East Lothian destinations. 253 bus service to be rerouted to Oldhamstocks

Public transport investment and the reversal of the bus routes cut.



Emerging Themes

Ecology and Geology

- protecting the unique and valuable coastline, rivers, hills and woodland

The landscape of East Lammermuir covers hillside and hilltop, coast, woodland, and agricultural use.

The landscape has value to the community as a whole, as well as to individuals.

ISSUES

A1 is dangerous for wildlife

Wildlife and Environment - impact of development

Shooting companies should be banned from using the East Lammermuirs for grouse/pheasant shoots.

DREAMS

“Community gardens are a great idea”

“I live next to the park”

“It’s nice to be out in nature”

“A hawk lives near me”

“We want a secret treehouse, where everyone can play and relax”

“Policies to improve biodiversity in the community such as stopping the use of Glyphosate and designate areas to wild meadows”

“More public access to the countryside - particularly the Hopes Estate

“Protection of countryside over housing”

Potential for improvements to the Common Land woodland near Stenton – potential location for a treehouse

Hedgehog corridors are needed under the A1

Preservation of green spaces, wild spaces and nature biodiversity

Restore the high value landscape views and start to repair the disconnected habitats

Rewilding projects

More incentives for farmers to fill in hedge gaps, repair stone walls and reduce field margins for wildlife benefit

Restore the high value landscape views and start to repair the disconnected habitats

Re-establish the biodiversity of the Burn [Oldhamstocks]

A collaborative effort to reverse environmental decline, increase biodiversity and reduce carbon

Road verges: cutting less (or none) and allowing natural growth. Replacing flower beds with wildflowers.



Getting Ready

Gathering Information

Reporting Back

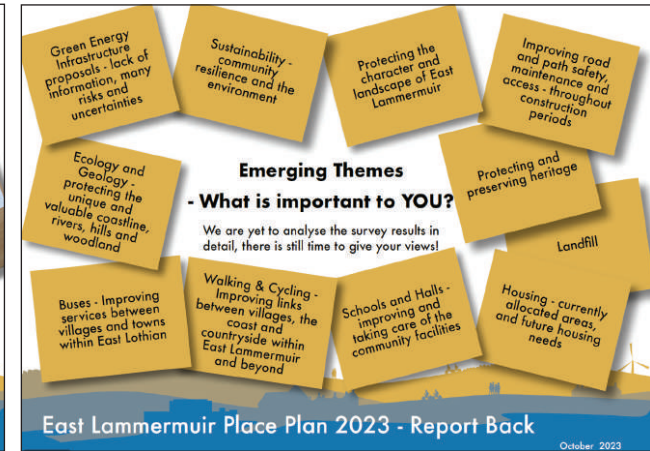
Drawing up the Place Plan

Submit LPP to ELC

Report Back

A short report was created for circulation to attendees who asked to be kept informed. The report includes acknowledgement to the attendees and facilitators, facts and figures, a summary of the school events, a summary of the key emerging Themes, and a process timeline.

Please see appendices for a legible version.



Second-Round Consultation

In November 2023 Community Councillors were presented with the full survey results, and a draft structure of the Local Place Plan.

A PDF copy was issued, and Sarah McLeary presented the draft at the Community Council Meeting on 5th December.

Community Councillors were invited to comment on the draft, and think about how they would like to move forward with maps for their own areas.

Second-round in-person events were arranged;

Innerwick Village Hall 10-12 10th January

Oldhamstocks Village Hall 27th February 2-4pm and 6-8pm

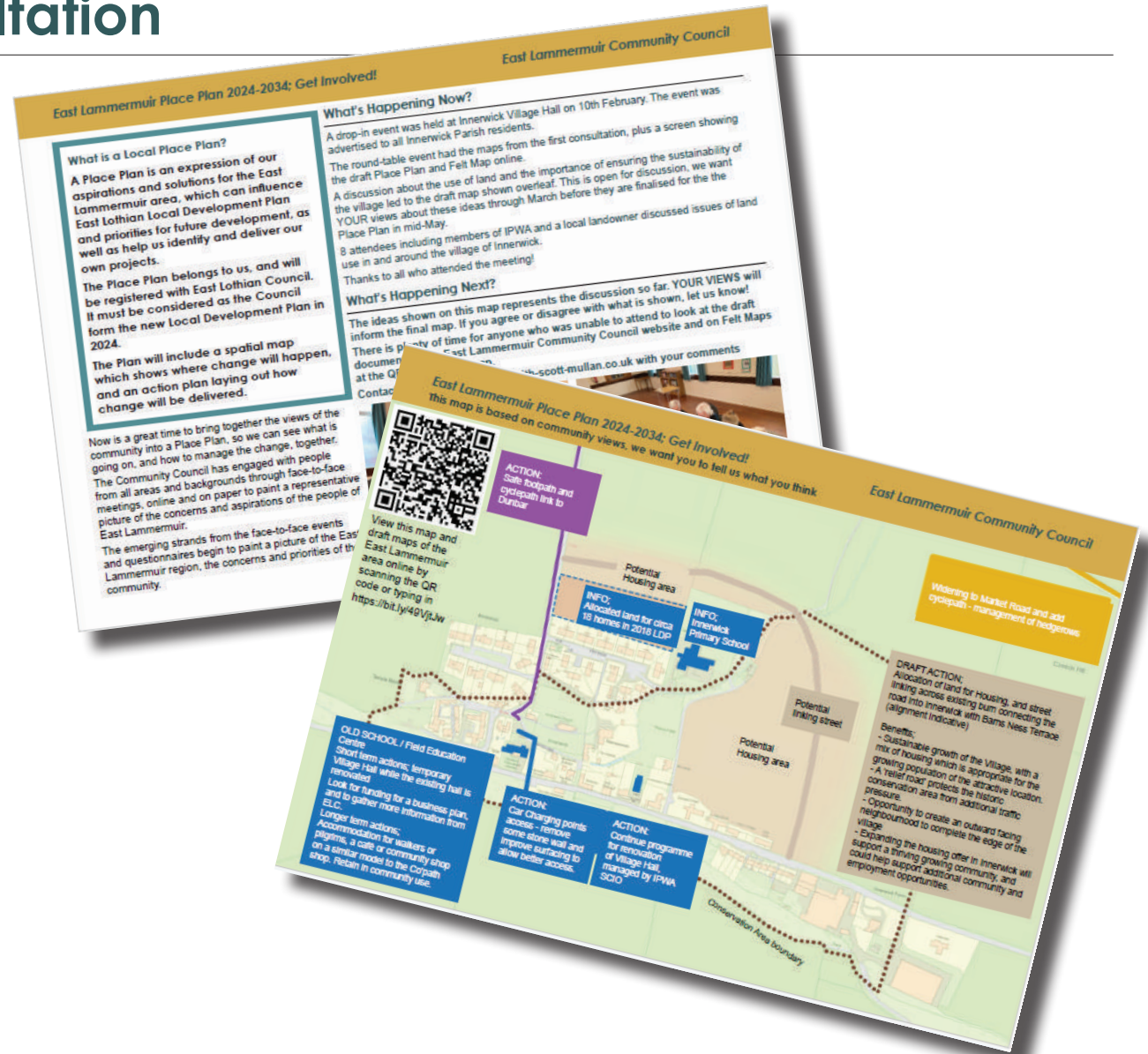
Stenton Village Hall 7th February 4:30-8pm 2

Spott Village Hall 5th March 6:30-8:30pm

These events focussed on the use of land, aiming to refine the maps created earlier.

At each event it was possible to speak to Sarah and members of the Community Council, and view the maps from the first consultation, as well as the online map.

Subsequent to the meetings, four leaflets were created with a map and information. (see Appendix J) These leaflets were circulated to everyone in the area by Community Councillors, and invited people to get in touch with their comments via email.



Second-Round Consultation - emailed comments

Emailed comments were welcomed. The comments were circulated to the relevant Community Councillors, and have informed the final maps of the villages.

The comments are not recorded here verbatim, to respect anonymity.

INNERWICK COMMENTS

Field Education Centre - Strong support for community ownership, subject to appropriate parking and access arrangements which do not impact the village.

Suggestion that a Community Development Trust could manage a facility.

EV parking access improvements - support.

Additional Housing - wide support but some have reservation - area has been removed from the map.

Support for a mix of tenure, avoid 'executive' housing, starter or self-build plots, strong design guidance towards low embodied and operational carbon.

Support for a phased approach in keeping with the scale and character of the village, to support the growing population and new facilities.

Conservation Area noted as sensitive.

No objection to additional housing land north of the village, outwith the Conservation Area.

Hall renovation - supported.

Cycle paths and improved links - supported

OLDHAMSTOCKS COMMENTS

Potential area for housing - Objection to this being included in a community plan

Hall area reallocated as Community Use - support

Church to be retained in community ownership - support

Clustering uses at the Well Head - general support, subject to safety and space for multiple uses.

Passing places - strong support, subject to detailed positioning

Car charging points - objection to some proposed locations, support for principle of electric charging points, no agreed position.

Agricultural land rezoned - general objection to the inclusion in a community plan.

20MPH limit through the village - strong support, subject to positioning and style of signage.

Improve water quality - support, subject to appropriate care for wildlife

Core path improvements - general support to the principle of appropriate access to the area, in the context of the rural land use and private land ownership.

Steet furniture - comments received supported resting places and benches for all ages, through the village.

SPOTT COMMENTS

Land to the north of the village - Objection to the principle of development in this area, echoing the conversation at the second round consultation.

Suggestion to consider the Battle of Dunbar area, which may offer additional protection to this area as landscape setting.

STENTON COMMENTS

No email comments received

Getting Ready

Gathering Information

Reporting Back

Drawing up the Place Plan

Submit LPP to ELC

East Lothian Council comments

Throughout the process we have engaged with East Lothian Council officers, who have responded to aspects within their remit. Thanks to officers for their responses.

LANDSCAPE PROJECTS OFFICER

‘We would be happy to have a discussion about how the ELLPP can support the aims and targets of the tree and woodland strategy. We see this area as being a strategic area for woodland connectivity but appreciate that there are lots of other considerations here, not least the energy infrastructure proposals.

We see the woodland habitat links being made along the landscape from the borders into and through East Lothian, but habitat connectivity between the coast and the hills is as equally important.’

ACCESS OFFICER

Open to further discussion on the community aspirations.

BIODIVERSITY OFFICER

Open to exploring what level of involvement required going forward.

PLANNING POLICY

Provided wording and clarity on the energy consents process and recent change to standing orders.

Provided information on Local Place Plan process and requirements, and a read through of the draft document with comments.

‘There are several issues in the LPP that would not normally be included in the LDPs. However, if a matter raised in your Plan cannot be addressed through the Local Development Plan process, then we will look to see whether another Council Service may be able to take this forward. We note that there are several site specific proposals. When such proposals are submitted as part of an LPP they will be considered alongside other proposals as part of the development of the LDP spatial strategy.

The LDP cannot limit Energy Consents applications being made. It is open for anyone to submit an Energy Consent application.

ARCHAEOLOGY & HERITAGE OFFICER

Would welcome and support the creation of a heritage trail at Spott.

Provided clarity on development within or adjacent to Conservation Areas; the principle of planning policy is to ensure that a development is appropriate and takes the special qualities of the surrounding heritage into account.

AMENITY SERVICES - SPORT, COUNTRYSIDE & LEISURE

Remit includes open space / greenspace, play areas and local food growing / allotments, primarily in ELC owned land. Open to further discussions.

HOUSING STRATEGY

Welcomed the detailed results of the survey, including questions on housing need.



Pre-Validation Consultation

It is a statutory requirement that the Community Body ensures that it contacts all councillors within the Local Place Plan area at this pre-submission stage, even if it had previously engaged with those councillors earlier in the process. It must also ensure, where the Local Place Plan area covers more than one ward or extends into another local authority area, that those councillors are also sent the proposed Local Place Plan and the information notice.

Before submitting a LPP to the Council, we have sent a copy of the proposed LPP and an information notice to the following

(a) each councillor for the LPP area,

- Cllr Donna Collins - May 28th 2024
- Cllr Norman Hampshire - May 28th 2024
- Cllr Lyn Jardine - May 28th 2024

(b) a community council any part of whose area is within, or adjoins, the Local Place Plan area.

- Dunbar Community Council
- Dunpender Community Council
- West Barns Community Council
- Garvald and Moresham Community Council
- Abbey St Bathans, Bonkyl and Preston Community Council
- Cockburnspath and Cove Community Council
- Cranshaws Ellemford and Longformacus (Lammermuir) Community Council

An information notice must include a brief description of the content and purpose of the proposed Local Place Plan and information as to how and to whom any representations on the content of the proposed local place plan should be made, the date by which they should be made which must be a date that is not less than 28 days after the date on which the notice is sent.

INFORMATION NOTICE;

The East Lammermuir Local Place Plan has been prepared on behalf of the East Lammermuir Community Councillors, residents and stakeholders in East Lammermuir, for submission to East Lothian Council in May 2024.

This document is a 'Local Place Plan' in accordance with the requirements of the Town & Country Planning (Local Place Plans) (Scotland) Regulations which came into force on 22 January 2022 with the objective of "giving local people the opportunity to engage meaningfully and have a positive influence in the future planning of development in their areas".

East Lammermuir Community Council considers that this document can be regarded as a representative view of a wide section of the community of East Lammermuir and intends to

continue to work collaboratively with councillors and officials of East Lothian Council with a view to this plan's provisions being registered and considered as an input to the Council's Local Development Plan.

The East Lammermuir Local Place Plan 2024-2034 is for everyone in the community, Energy Developers, and others who are looking to work in East Lammermuir.

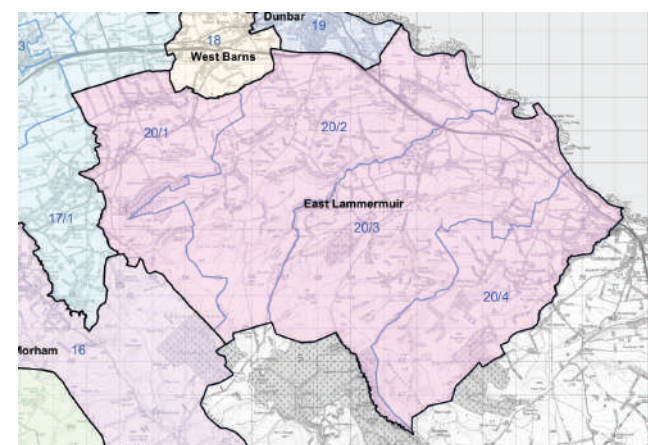
The geographical area covered by this Local Place Plan is the East Lammermuir Community Council area, shown on the adjacent map in pink.

The Plan outlines concerns, aspirations, and actions

on how to move around, the use of land and the protection of landscape and open space in East Lammermuir.

The Plan is based on deep and wide community consultation, over the last seven months. The Consultation Report and Survey Report outline the process and findings.

If you wish to make comment, please contact me on this email address, or the Community Council on info@elcc.scot. The Local Place Plan is a living document, and we welcome help and collaboration on the actions. We welcome comments at any time, however any comments of agreement or suggestions for modification prior to validation by East Lothian Council should be sent to me by 27th June, in 28 days' time.



Getting Ready

Gathering Information

Reporting Back

Drawing up the Place Plan

Submit LPP to ELC

Appendices - Detailed Event Notes

Appendix A - Flyer

"there is no masterplan so let's make one!"

Have you heard of the Local Place Plan?

Do you know that East Lothian Council is putting together a **10 year strategy** to develop your area?

Would you like to **have a say** in shaping **your** Local Place Plan?

Drop into one of our Public **discussions** anytime between 3.30 pm and 8.30pm: or join in one of the structured sessions starting at 3.45pm and 5.45pm

Spott Village Hall: Tuesday 19th September
Innerwick Village Hall: Wednesday 20th September (3:30 to 7:30pm)
Oldhamstocks Village Hall: Thursday 21st September
Stenton Village Hall: Thursday 21nd September

Complete our survey, and to say "**thank you**" we will enter you into a prize draw with the chance to win a £50 gift voucher.

Scan the QR or go to
www.bit.ly/ELCC-LLP
Paper copies available on request info@elcc.scot
or at your village hall



East Lammermuir Community Council September 2023

Join us in shaping the future of your community

If you live or work in East Lammermuir your ideas are needed to drive the direction of the East Lothian Councils 10 year development strategy

What is the Local Place Plan?

Local Place Plans (LPPs) are a new type of plan (introduced by the Planning (Scotland) Act 2019) giving communities the opportunity to create proposals for the development and use of land in their area, enabling communities to focus on their aspirations as well as their needs.

We all have hopes for our area and these need to be captured in local village-based plans

East Lammermuir and in particular the Innerwick area is a hotspot for proposals to massively develop Scotland's green electricity infrastructure over the coming decade. We count 8 super sized proposals at present that will have an impact on the whole area.

Having an agreed LPP for East Lammermuir is particularly important as we seek to present the Council and Developers with our aspirations for our area, to make the very best of what seems set to be a period of huge disruption and construction in our back yards.

Why Participate?

- **Shape Your Environment:** Have a say in how our villages and settlements evolve to meet the needs of our growing community.
- **Make Your Voice Heard:** Your input will directly impact the decisions that affect your everyday life.
- **Connect with Neighbours:** Collaborate with fellow residents who share your passion for East Lothian's well-being.

How Can You Get Involved?

- **Community Workshops:** Attend interactive workshops where you can share your thoughts and learn from others.
- **Online Surveys:** Participate in surveys that cover various aspects of community development.

****Together, We Can Build a Better East Lothian!****

Drop into one of our Public **discussions** anytime between 3.30 pm and 8.30pm: or join in one of the structured sessions starting at 3.45pm and 5.45pm

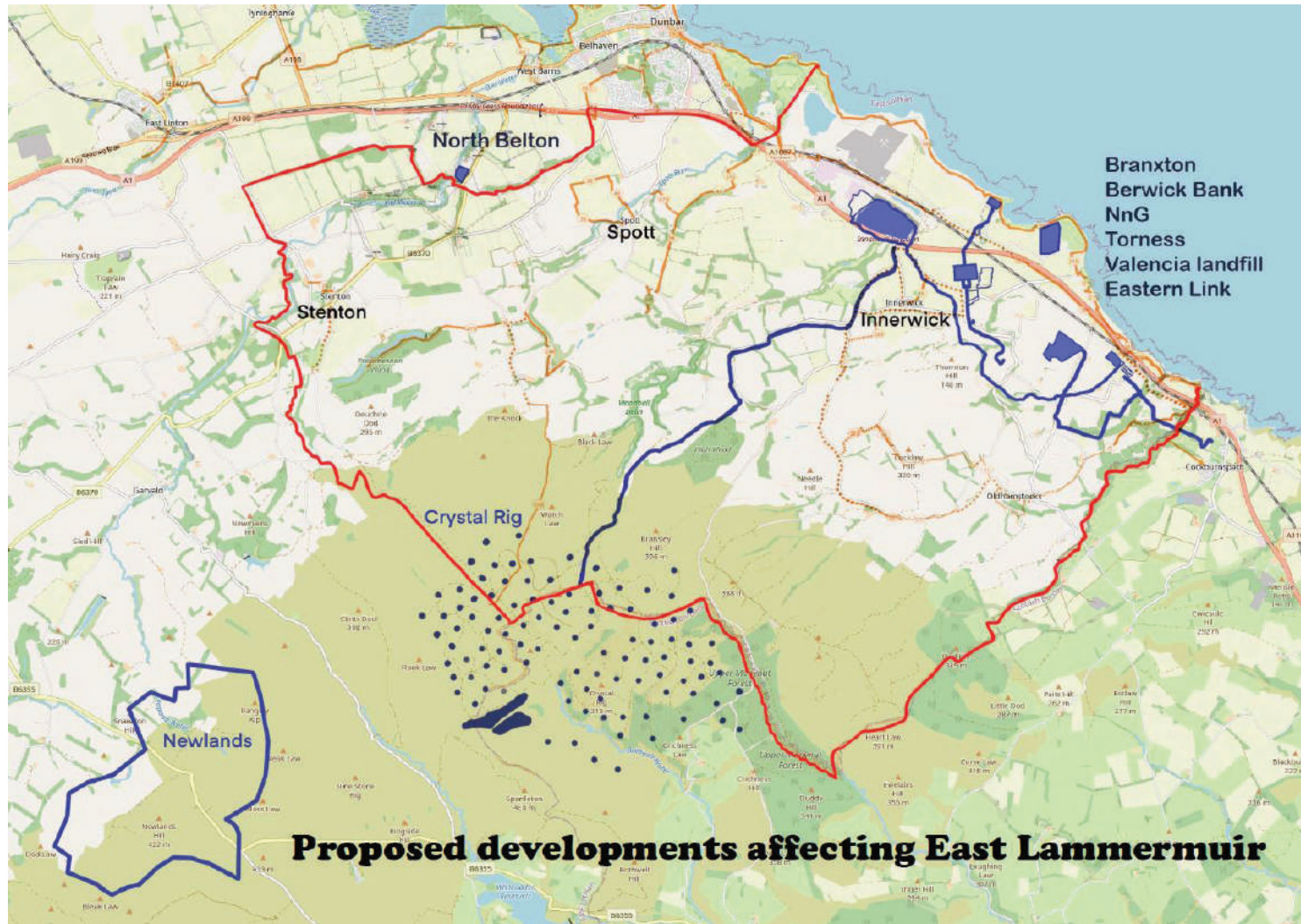
- **Spott:** Tuesday 19th September
- **Innerwick:** Wednesday 20th September (3:30pm to 7:30pm followed by IPWA AGM)
- **Oldhamstocks:** Thursday 21st September
- **Stenton:** Thursday 21nd September

Transport available, please ask via info@elcc.scot

Your input matters, and your presence will make a difference. Let's shape the East Lothian we want to see for generations to come.

Don't miss this chance to be a part of positive change. We look forward to seeing you there!

Appendix A - Flyer



Welcome to the East Lammermuir Place Plan Consultation Event 2023

Why are we here today?

We are here to understand more about what you want to happen in your area, to start to build a Local Place Plan.

Together, we can help drive the direction of the East Lothian Council's 10 year development strategy.

Join us in shaping the future of your community.

Complete our survey, and to say "thank you" we will enter you into a prize draw with the chance to win a £50 gift voucher.

Scan the QR or go to www.bit.ly/ELCC-LLP

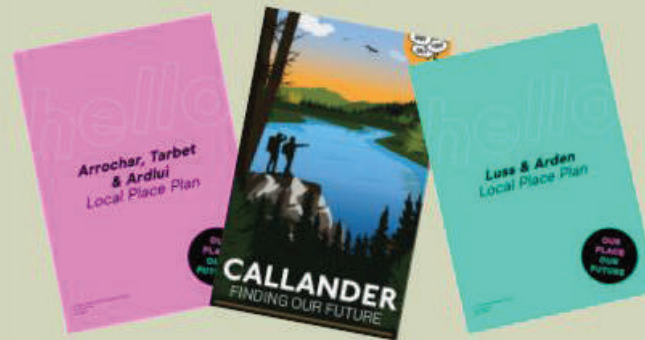


What is a Local Place Plan?

A Place Plan is an expression of our aspirations and solutions for the East Lammermuir area, which can influence local planning policy and priorities for future development, as well as help us identify and deliver our own projects.

The Place Plan belongs to us, and will be registered with East Lothian Council. It must be considered as the Council form the new Local Plan in 2024.

The Plan will include a spatial map which shows where change will happen, and an action plan laying out how change will be delivered.



Some examples of Local Place Plans from rural areas

We need your help!

Now is a great time to bring together the views of the community into a Place Plan, so we can see what is going on, and how to manage the change, together.

The Community Council and others have already pushed for more information from the infrastructure developers. Applications for some of the work have been submitted, and more will come forward soon.

If we have a plan to take to the Council and the developers, we will be in a good position to ask for what we want.

Thank you for your time and energy today!

Welcome to the East Lammermuir Place Plan Consultation Event 2023

What are the major issues?

Green Energy Infrastructure

East Lammermuir and in particular the Innerwick area is a hotspot for proposals to massively develop Scotland's green electricity infrastructure over the coming decade. We count 8 super sized proposals at present that will have an impact on the whole area.

Having an agreed LPP for East Lammermuir is particularly important as we seek to present the Council and Developers with our aspirations for our area, to make the very best of what seems set to be a period of huge disruption and construction in our back yards.

What kind of issues will the Place Plan cover?



Process Timeline

Getting Ready

East Lothian Planning Department has invited the Community Council to prepare a Place Plan
Summer 2023

Gathering Information

Open events, workshops, and surveys to understand the views of everyone in the community
20th - 22nd September

We Are Here

Reporting Back

Presenting the findings of the consultation so far
27th September

Drawing up the Place Plan

The views, aspiration, mapping and action plan form the Place Plan

Submit the Place Plan to East Lothian Council

Registration ensures the Plan will be considered when the Council draw up the Local Plan - by Spring 2024

Community Council meet the Energy Developers

Presentation of the draft Plan and emerging themes

Continuing consultation

As further Energy Infrastructure comes forward, the Community Council will continue to be a voice of the community.

Appendix B - Welcome Boards

Appendix C - Spott Notes

ISSUES

LAND

Loss of farmland
Loss of scenery
Siting of the battery farm - quality of land taken

OPPORTUNITIES

Will the energy companies commit to jobs and opportunities to young people locally - EDF scheme is good
Lack of knowledge of archaeology in the existing landscape
Work and leisure opportunities for young people and better access to them

ECOLOGY

Hedgehog corridors are needed under the A1
A1 is dangerous for wildlife
Dangers from industry - the community needs to understand the risks

MOVEMENT & ROADS

Canon gate bridge - poor state of repair and used as a diversion when A1 is closed
Location of the weigh station and enormous vehicles
Construction traffic - damage to already poor and rural roads
Road improvements / maintenance is needed
Spott Road is busier and busier

CYCLING & WALKING

Need for safe cycling and walking routes
Access over the A1 - poor visibility
Integrated cycle / walkways between villages
Ways of better connecting Dunbar with our rural and coastal communities

Make sure the communities most directly affected by development get a fair share of the community benefit and opportunities
Perceived lack of community benefits
All vacant properties will become long lets for construction workers?

Appendix C - Spott Notes

DREAMS

Safe connectivity with the coast and Dunbar - a route over or under the A1

Minimise visual damage to the community

Loss of biodiversity has been reversed

History is preserved

Approach to opportunity for capital investment with e regional as well as a local perspective (East Lammermuir. Coastal areas and Dunbar) support community-led proposals that will have this regional impact in terms of employment, leisure, training, and culture.

A strong community involved in local environment with sustainable travel between communities and into Dunbar

They took the windmills away

There was information from the energy experts in layman's terms to inform the community

Appendix D - Innerwick Notes

ISSUES

RISKS AND CONCERNS OVER ENERGY INFRASTRUCTURE

Lack of early dialogue with ELC / Scot Gov / developers regarding energy infrastructure
Little attention to landfill fire until the wind turned over Dunbar
Security risk, power structures could be targeted
Controlling developers once things are in place(eg landfill too big and goes on fire)
Lack of evidence regarding local employment opportunities from the electrical work
Air quality
Innerwick not benefiting from any power source - all goes to England
All focussed on one area - landfill, Torness, incinerator, LaFarge, now also the substation

ENVIRONMENTAL

Wildlife and Environment - impact of development
Making sure there is a net improvement rather than deterioration of where we live
Devaluation of housing and the health issues involved in the long term, both mental and physical
Mental health and isolation
Cohesive and comprehensive communication
Who is responsible ultimately? - Scottish Govt / Local Council / SEPA
Restoration offer development (eg narrowing roads to return them to original state)
We are taking risks, it's not going to benefit us

CONNECTIONS AND MOVEMENT

Road safety
Access to the village, poor lighting, poor egress
Dangerous junction, plus disruption
Walking / cycle paths
Safer routes to school
Getting to the beach without using a car
Community transport - PINGO
Better (more frequent) transport
Roads destroyed
Safety at A1 junctions for drivers
Roads are dangerous to walk / run / cycle on- full of potholes, roadkill, no sidewalks or pavements
Concerns still over speed limit on old A1 (60mph) to Quarry Gate and down to Skateraw Harbour also same speed limit.

HOUSING - where will workers live?

Farmlands
Housing for workers
More local shops please
Wildlife
Activities for youth

Appendix D - Innerwick Notes

DREAMS

Protect our villages for our children
Paid for classes in the village hall
Free electricity
Redevelop and save historic buildings
Free Electricity
Community Hub
Safe cycle routes (not just a painted line at the side of the road)
Employment for local folk
Council tax / electricity cost reductions
Reduced Community Charges
Better Roads

Spatial Dreams

Save historic buildings!
A roundabout
Signposting
Village Hall / New Village Hall
A Country Park
Free charging points
Footpath via the dry burn for the coast, big enough for cycles and pedestrians
Improved junction safety on access and exit from A1 to Innerwick and Thurston
Pavements linking Innerwick and Dunbar
Car Charging points

Appendix D - Innerwick Notes

EAST LAMMERMUIR PLACE PLAN

PUBLIC CONSULTATION 20 SEPTEMBER 2023

INNERWICK VILLAGE HALL

PRESENT: Sarah McLeary

Rev Suzie Fletcher

Chris Bruce

Barbara Rowell

Innerwick Village Residents (sign in sheet)

BR welcomed everyone to the meeting and explained that ELCC have been invited by the local Council to formulate a Local Placement Plan. This is a document written by the community which can include anything they want in terms of change in their area and the Council have to take note of this. It is a living document and gives people an idea of what is happening in their community.

The Community Council want to use this Plan to drive talks forward with the energy infrastructure developers. Planning applications are coming in and will continue to do so. In the springtime the Plan will be ready to be registered with the Council. It is a proactive way of trying to influence what is planned.

People were asked on a scale of 1-10 how much they knew about the proposals from the developers and most said about a 5.

It was explained to everyone that Berwick Bank will be the UK's largest wind farm (approx. 300 wind turbines) will be located 25 mile out to sea, budget for this development is £12 billion.

Cables carrying the electrical power will be brought in under Skateraw to a conversion site at Innerwick. The power is brought on land as DC and converted to AC before going into the national grid. Any surplus energy (DC) will be taken via undersea cables to County Durham in the north of England.

Question asked why facility could not be in England, local area having all the upheaval and risks without any benefit.

The substation at Crowhill will be 390m long x 250m wide x 21 m high. Who decided to put substation here, how were choices reached.

Another station is to be built near the Branxton substation, permission has been granted for building next to the incinerator in Oxwellmains. Converter station is to be at the back of the incinerator, planning permission already given.

Appendix D - Innerwick Notes

Because the country has moved away from fossil/nuclear fuel to wind/solar, the grid needs battery storage that can stabilise the grid at 50 hertz. Torness control panel triggers an alarm if this drops below 49.2. When Torness is no longer in use batteries can provide power and stabilise the grid at the required level.

The proposal is to store batteries in shipping style containers with cooling fans to maintain the correct temperature. This facility is to be located behind the railway line at Linkhead at Oldhamstocks road junction and will be a considerable size, this will impact on the local area.

During construction lorries will transport earth and will need access to sites via specially built haul roads which after the development is completed, will have to be returned to their original state of agricultural land. People did not feel it would be safe to walk or cycle round fields etc unless there was a dedicated path. It was suggested that these haul roads be left for local people to use for walking, cycling etc. All agreed this idea could be put forward to the developers before the work starts.

Discussions are necessary with developers about the moving of equipment into the Lammermuir Hills. Concerns voiced over safety and traffic speed, the developers are quite amenable to have discussions regarding these issues.

Local community need to be informed and have some control. Developers should make information understandable to everyone, present the risks in a way the community understands through local newspapers, citizens assembly etc. Give local people the information and the right to respond.

Comments raised that SSE don't consult anyone, came up with 9 positional options for a substation but didn't consult with the local community about the best option.

Issues Raised

A safe crossing on the A1 was vital from Innerwick to the beach. There is the need for a safe crossing point somewhere between Cockburnspath and Spott roundabout. Safer roads and paths generally was a big concern for everyone. These issues must be paramount when talking with developers.

Concerns raised over access for drivers into all villages off the A1, signposting to Thurston is poorly lit and the blind bend on entering the village is not signposted, better signposting in general is needed, basic safety measures not in place. Query raised over whether A1 would be closed whilst new junctions going in, the state of the road overall and how would maintenance be carried out during the period of construction.

Roads will be destroyed, how will maintenance be carried out during work?

The developments will go ahead no matter what and residents were worried these structures would be larger than initially proposed.

Appendix D - Innerwick Notes

The residents asked where are the development workers going to live whilst construction taking place? It is known that one property in Oldhamstocks has been rented out to workers. What would the effect be on the value of local properties.

There is no room in Innerwick to allow 2 vehicles to pass safely now never mind when lorries etc are moving around the area.

Will the Insulate Innerwick project to retro fit properties continue?

Everyone agreed that there was a huge lack of communication between all agencies involved. General opinion was that developers have failed to talk to the community. No-one is listening to the community or wants to take responsibility. These developments have been on the cards for 10 years yet no-one has asked for local views or explained how the impact on the public will be minimised.

There was not much information about the recent landfill fire until it impacted on Dunbar and then people became more interested. Concern was voiced over the smoke people of all ages were breathing in during this time. SEPA advice was to simply close windows and said it was a matter for the local Council. Residents who lodged complaints with Valencia had not received any response to date.

It was felt that ELCC should be one of the richest Community Council's in the UK because of the businesses based here (incinerator, Torness etc) but that the CC had not been as forceful as it should have been. General feeling was Innerwick was not benefitting from any of the developments and local residents were always last to know what was going on.

The rubbish that goes into the landfill is not from our local area but comes from the Highlands and Western Isles and North East England. People felt the rubbish mound at the landfill had not reduced in size as they had been promised. Questions raised over what was being burned at the site and what happened to unrecyclable waste, where does that go.

Warnings about the fire had been received as far away as Haddington and Eyemouth.

Concern was raised about the amount of proposed, battery storage – fire risk, how are they recycled?

Concerns expressed over losing the history of villages and farmland, too many houses being built. The school children in Innerwick used to go out to look at wildlife etc in the area but don't anymore. What is the future going to be for the next generation? Villages are being destroyed.

Public transport – everyone agreed there is a need for local transport, now have people who can't physically get from A to B. A similar operation to that of PINGO was discussed, this is a demand responsive bus service that is bookable via an App, it will pick you up and taken you to points where you can connect to the existing transport network. PINGO is already operating in other parts of East Lothian and the concessionary bus pass is accepted on it. It will not go over the border to Morrisons at Berwick.

Appendix D - Innerwick Notes

Everyone agreed the A1 is a very dangerous road and a safe crossing was vital. There is a crossing at Torness but this isn't easy to cross safely, the crossing should have been an underpass.

There have been a few deaths on the road and it was noted that the illuminated signage for the Innerwick slip road has never been replaced following a fatal crash a few years ago. Drivers still speed in both directions and don't drive with care. Safety at all A1 junctions was an issue generally. Road will become even more dangerous.

The need for more local shops was discussed. Suggestions were made for a mobile grocery van in the area as this would cut down on journeys to the supermarket. Community gardens/orchards and allotments were another idea. The previous community orchards had disappeared for housing. Innerwick church and a bakers are up for sale. Communities would have more control and hubs could create employment. It was pointed out that the (community-owned) Crunchy Carrot in Dunbar will deliver in area. It was felt the Church could be used as a community hall. Suggestion made that old farm buildings (ie.Crowhill) could be used for weekly markets including a bakery, post office etc. However it was pointed out villages with low population can't sustain shops. Cockburnspath community shop is an investment in the community and has a good range of products and was deemed no more expensive than any other shop. It is supplied by local businesses (a bakery and Belhaven). The shop at Thurston Holiday Park was thought expensive.

Living rurally carbon footprint must be around 4 times that of living in Dunbar because people have to use a car. Must be a way to live without creating massive carbon footprint.

Local employment discussed. General feeling was although the wind farm budget was massive, local people would not be employed and the point was raised whether it would be possible to engage with developers and contractors to ask if they could provide training courses for young and unemployed people. Could they support an apprenticeship programme with emphasis on STEM (Science, Technology, Engineering & Maths) in conjunction with Dunbar High School? Could they create something local for all people ie. a college.

Noise and pollution during construction was discussed, as was the effects on peoples mental and physical health, there could be issues of loneliness for some people who would not get out or even want to go out when work being undertaken.

One resident felt that the developers were riding roughshod over local people and believed the only way was to make life difficult for the developers by protesting, stopping equipment going into fields, be an annoyance as they have to take note. She suggested ringing Environmental Health if you started to cough as they have to investigate every complaint. Need to stop them in their tracks, feels it is all done and dusted, what they are doing is not environmentally friendly.

Appendix D - Innerwick Notes

It was pointed out that ELCC weren't saying no to protests but the developers had promised to meet with them next month and it was felt more would be achieved if met them with positive ideas.

Cohesive and comprehensive communication is needed, have to know what is happening and where to get information from, who is talking to who. Who is responsible if there is a problem with the developer – SSE, SEPA, L/A?

NPF4 document – somethings not carried out. No holistic views taken. SSE etc say that OFGEM advise them as to where they can connect to the national grid. Decisions made behind closed doors, Government and Council don't get a say in this, let alone local community.

Effects on wildlife was felt to be a very important matter. The coastline in this area is geologically unique. Chapel Point is a Triple SI site used by Edinburgh Uni for teaching students, there is also a memorial there. Edinburgh University to be contacted to be made aware of plans for this part of the coastline. The ponds opposite Innerwick junction have amphibians and butterflies etc. There would have to have been a geological survey carried out on whole area, this should be available to view online. This matter to be raised with developers, they need to respond to the geological issues raised.

Problems with flooding in that area, the pond next to the railway cottage has issues.

Major concerns about risks unknown and lack of information, when will this be available? Need safer walking/cycle paths, routes to school, safe crossings on A1, better public transport, safety and maintenance of routes.

Should be looking at what can be gained from developers ie. free electricity to all properties, new village hall, EV charging points.

What the community have suggested will be included in Place Plan, doesn't mean community council won't object but they can provide certain things for community.

Everyone was reminded there is an online questionnaire which they could complete, preferably electronically as this made it easier to collate numbers, so far had about 50 responses.

Report to be produced which will be taken to developers.

MCJ

25.9.23

Appendix E - Oldhamstocks Notes

ISSUES

TD postcode - heat payments in winter

NHS - Galasheils for some services

Bus passes

Public transport - put routes past houses

Buses especially an issue for young people

No bus to take people to work for 8 or 9am

Lorry movements

- effect on the environment

- degradation and detritus

- effect on wildlife especially nesting

Enforcement of traffic rules by Police Scotland?

A1 repairs by BEAR

Will Bilsdean Road be used during construction?

How can developers address the inconvenience?

'Compensation'

Traffic closures

Traffic lights

Chargepoint in Innerwick is not good, difficult to access and use

A1 sliproad an issue

Cycle path disruption through construction periods

Could haul roads provide an active travel network in the future?

Birnieknowes does not have fibre internet

Interrupted power supply

The look of Energy Infrastructure is a concern

Lack of support services and accommodation

for older people, to enable people to stay in the community

Lack of facilities for young people

Housing is unaffordable

Where will workers live?

Insulation and energy generation for older properties

- cost

- planning permission

Medical adaptations to homes

Care and repair services

Appendix E - Oldhamstocks Notes

DREAMS

Pingo – already in Garvald?

Improve the environment up in the hills

- local woodlands

Community benefits, not just capital

Keep the power on continuously

Bury the cables?

Why so many power cuts?

Fibre to all properties

Link to Birnieknowes

Improved Active Travel network – including existing paths like Dunglass

‘Core paths plus’

Governments tat work with the community to build coherent electrical infrastructure

Citizens Assembly

Coherent plan for Net Zero

Community seats at developer decision making

Roads – 20MPH limit in the village

Safe route across the A1 to home from Dunbar and Co’path

Road improvements – from the A1 to the village to be widened, needs passing places [x2]

EV charging points in the village – locations to be agreed

Permission to build the proposed Village Hall

New bus shelter

Future of the Church – keep for the community

Decarbonise heating of homes, ie away from oil

Village heating generation

Levy per lorry/load

Jobs for local people – link with local schools

Outdoor gym / exercise area

Plan for brownfield sites – Torness and Tarmac quarry

Secure dog park

Re-establish the biodiversity of the Burn

- improve water quality
- restock with fish

Appendix E - Oldhamstocks Notes

EAST LAMMERMUIR COMMUNITY COUNCIL

PLACE PLAN MEETING

OLDHAMSTOCKS VILLAGE HALL 21.9.23

Oldhamstocks Residents (sign in sheet)

CB welcomed all to the meeting and advised other sessions had been held in the community. He explained that local Community Councils were invited by the Council to gain the views and expectations of the local community as to what they'd like to see happen in their area and then a Local Place Plan is presented to the council outlining these views and the Plan has to be taken into consideration by developers, it is a living document, any constitutional body can formulate a Plan. The local Community Council is hoping to meet with developers in October.

Attendees were asked to complete an online questionnaire which has so far had 50 responses, easier to collate information electronically.

It was asked if Oldhamstocks was becoming a middle-class enclave as it is the only village in East Lammermuir without council or housing association properties, it was felt this wasn't so.

People were asked on a scale of 1-10 what they knew about the electricity structure proposals and most said about 2.

Berwick Windfarm is to be located approx. 25 miles offshore and will consist of approximately 300 turbines. The budget for this project is £12 billion. Opinion was developers could afford to pay for local amenities out of this money.

Questions asked about road closures, where and when they would occur and were advised as yet no clear answer on this matter.

People wanted to know what would happen if the A1 was shut and local traffic diversions were in place. It was expected that traffic management would make plans for any diversions and ensure these worked, if not then they would have to reconsider ie. a contraflow system. How would the road cope with the extra number of lorries daily and how could any road maintenance be planned and undertaken during the period of construction. It was suggested BEAR could ensure the road was in good condition at the start of the work or they could carry out a survey at the end of the works and pay for improvements to the road.

Overall agreement there is a need for safe crossings on A1 between Cockburnspath and Spott roundabouts and where the best location for this would be, would a bridge or underpass be preferred. There is already a crossing at Torness, however, it does not feel safe to walk, cycle, push a pram etc locally. If building haul roads, instead of returning them to original use once the work has been completed (as is the current plan) it was suggested the roads could be left as offroad walking paths.

Appendix E - Oldhamstocks Notes

Information given regarding the battery storage construction which is due to start in 2027. The battery storage facility is to be located behind Linkhead, just off the A1 at the Oldhamstocks junction. It will consist of approx. 228 containers where the batteries will be stored, a cooling fan system will maintain the correct temperature and construction would take about a year. Screening would need to be built around the site and there is no way this could be built without causing massive disruption to area. Concern was expressed about the fire risk at the proposed battery storage facility, not enough was known about this new technology or development.

If the Berwick Bank windfarm were to produce 3x more power than Scotland can use, how would this be stored, at the moment excess power goes down to Blyth.

Residents wanted to know who decided where to site these facilities and felt the Government were as much to blame as the developers. They were told it wasn't easy to engage with the Government but it wasn't for the want of trying.

The proposed traffic management for this Battery Storage construction was to close the road at the junction with the A1 (railway bridge 103) for a year but open on Sundays? A haul road would go from Linkhead up past Lawfield to the old Oldhamstocks road sign. Other developers have not been as forthcoming with information.

It was felt the cycle path built along A1 would not be useable and is already dangerous because of traffic (not part of national cycle route).

Crystal Rig IV work expected to start Easter 2024.

Developers of a new windfarm proposed for Newlands Hill had offer at Gifford and Garvald giving money off new homes and bills.

What about giving everybody in our local area solar panels or batteries to reduce electricity consumption.

Everyone agreed there was a need for local shops. The last Oldhamstocks village shop was around 30 years ago. Cockburnspath is good, the shop at Thurston is a holiday shop and of no comparison.

Cockburnspath and Mr Neep shops are used more than Asda and have an agreement about selling fruit/veg.

A village shop could be a central village point but it was thought the hall would be that. A local baker in a neighbouring village had considered setting up a local business, but is currently working out of a unit in Haddington.

Appendix E - Oldhamstocks Notes

Shops and public transport desirable but not practical because of small community.

PINGO is a demand responsive bus service, bookable via an App that will pick you up and drop you at public transport link sites, concessionary bus pass accepted on it. Similar scheme working well in other parts of East Lothian and the Borders. Could this type of service work in this area.

Oldhamstocks Community Association set up community benefit fund with money from wind farms. The contracts end in about 20 yrs, want the money invested in a trust so when income from windfarms stops the community can still access money from this fund.

Interrupted power supply an issue. Already have regular cuts, may only be very short but will these become worse with developments. Need to identify what causes cuts. If something clipped an over-head cable it could cause power cut. Power needs to be continually on.

DREAMS

It was felt the Government should work with community to plan major infrastructure projects and a citizen's assembly would be useful.

Locals have little input with developers, could request a meeting with them at the early stages to discuss plans and put forward the community's point of view from the very start. If companies en-gaged early on with locals they would get less push backs. The decision makers have usually not visied the affected areas and have no idea of the impact their plans will have on communities.

Scottish Power representative said they wanted to meet with people.

Everyone agreed passing places are needed on the Oldhamstocks road from the A1, these to be marked on map (6 needed).

Oldhamstocks Community Association have been advised by architects to withdraw new hall planning application temporarily and have further discussions with ELC, re-submitting the pplication when all issues are resolved. No parking bays on village green is an issue, the planners say we need bays in front of hall and questions asked as to why so much stone wall needs to be removed because it is a conservation village.

Church parking - apparently own part of the land opposite where the prefabs are, might be worth looking into this and could possibly put electric car charging point there.

New village bus shelter (school bus uses it). Repair needed from earlier accident, suggestion this could be added into Plan.

Appendix E - Oldhamstocks Notes

Speed limit 20 mph in village and signage needed. Council said couldn't put signs up as no lampposts or pavements; request was mainly to slow traffic down because of playpark.

Reduced speed signage had been asked for in Birnieknowes but nothing heard to date.

Oldhamstocks Church – not sure what future will be but understood someone local may be interested in purchasing it - Church of Scotland have said this would be acceptable, they don't want the building falling into disrepair.

It was thought this was a good opportunity to keep church in community, could be used as a community centre, arts/crafts etc.

It was agreed, if possible, to keep the church in the community and to include this in the Plan.

OCA had discussed whether there was a need for 2 village hubs but decided against using the church as a replacement for the delapidated hall, want a more environmentally friendly running hall.

Village electric car for hire discussed. This could be booked in advance for people to use to go to Dunbar. However it was felt there could be issues of car not being returned in time for next user and who would be responsible for charging it up, cleaning it etc.

The point was raised that people were getting to an age where they may not be able to stay in the village – what services are needed to enable people to remain here, supermarkets offer home delivery service.

With all works going on issues about ugly new electricity infrastructure buildings in the Lammermuir area and high Infrastructures. This could be used as an opportunity to get more woodland around the area.

Foot-paths through to Dunglass Estate constantly closed, it is a footpath from village to the sea, need to find out why it is not felt to be accessible, as it is a designated footpath which people have a right to use.

The condition of the path from Old Mill Cottage up the other side of village in winter could be an issue.

Request for path from Birnieknowes over fields. Haul roads could be left as walking routes.

Paths were marked on map from Oldhamstocks through Dunglass to beach. A path was wanted from Birnieknowes to Governors Bridge (from there the paths are ok) and a path from Woollands.

Good cycle/walk paths would increase tourism. Link up from Cockburnspath to Birnieknowes and path from Cockburnspath and Cove would be welcome.

Comment made about lots of tree planting in area, grant received from Woodland Trust, enhances rural landscape, would be nice to have industry and wildlife together, but have to pay Woodland Trust to keep it up. This could be included in Plan.

Appendix E - Oldhamstocks Notes

It was suggested the developers contribute to the cost of retrofitting homes to be more energy efficient (insulation/solar panels) heat pumps don't work in old houses.

ELC has run out of cash for medical adaptations for homeowners which will mean more bed blocking in hospitals, could money from developers be used to support this. Care and repair service up and running. Lack of social housing in area, people can't afford to rent. A lot of property rented out for tourism and not for locals.

People wanted to know what the plan was for housing workers on these developments, one flat in Oldhamstocks is apparently rented out to a worker, but nothing else was known.

Torness used to bus workers in from all over region. If this was done could cause problems on the roads, there is a lack of public transport.

To date no schedule exists stating how things will be built. Developers say they can't recruit people, scarcity of labour. If had a work schedule, construction workers could do one part of development and move on to another but developers can't give schedule of works yet. Paul McLennan (MSP) has been at meetings where people have asked and been given no answers.

It was commented that it is difficult to criticise when you don't know what the plans are.

Torness is scheduled to start defueling in 2028, then handed over to Magnox for decommissioning which takes many years.

Point raised about heavy vehicles going past houses could result in damage to property, Innerwick residents found this, could make selling property difficult, would anyone want to buy property with the work going on. Would any help be forthcoming from the developers?

Effect on valuation of properties in the area.

If there are 2 developers on site at the same time do they have to use the same haul road etc. It was thought this would need to be policed, would have to make sure it runs smoothly.

Queries raised regarding number of vehicles that would be travelling through villages

daily and one suggestion was to charge contractors a levy on lorries coming through, this could reduce road use and carbon footprint, levy per tonne, money raised could go towards maintenance/upkeep of the roads. To include in Plan.

DREAMS INCLUDED

Passing places on road to A1, 6 passing places to be marked on map.

Pathway Bilsdean road, Dunglass to Cove underpass.

Appendix E - Oldhamstocks Notes

PINGO – demand response bus service, could book and use concessionary pass.

Power cuts an issue.

Cockburnspath path.

Fibre Optic broadband to every house.

Secure dog park.

It was suggested that the developers support subsidised apprenticeships in the area for young people, this could be linked with Dunbar High School as Torness did in the past.

Chaos during construction. Oldhamstocks to be crossed by people accessing works. Huge amount of land involved for essential bit of cable.

Local community needs to be compensated for disturbance and inconvenience.

It was asked if developers were obliged to say why they have chosen sites but it seems they aren't obliged to disclose this to other developers, in competition with each other. There are Brownfield sites near Torness, could these not be used for development.

The Community Council was not saying they weren't going to object but would do so when appropriate.

There are links on the Community Council website giving more information about the proposed projects.

To date the Community Council has not met the constructors as a group but hopefully they will get together in October, as yet no set date.

Suggestion made to get Transport Scotland involved with Innerwick and Oldhamstocks.

MCJ

28.9.23

Appendix F -Stenton Notes

ISSUES

Speeding through the village [x2]
Future of the Primary School
Active Travel – improve infrastructure and surface quality to encourage safe walking and cycling
Future fuel sustainability for older properties in particular
Car charging points that need to be increased and made more reliable
Mobile phone coverage – can't have first responders [x4]
The phone companies are lying about signal strength
Narrow pavements
No dropped kerbs
Accessibility audit required
No connection with East Linton
No interchange with Edinburgh for trains
No regular commuter service
Connection with East Linton- station / library / friends!
No bus to Haddington
No mobile library

Protection for the hills! Landscape designations were overridden by need for green energy
Visibility of Newlands is an issue – Save Our Skyline!
Generally pro-windfarm but concerned about the balance and profits being made
Keep the school, it's very important [quote]
Jobs for local people not really feasible
There's a lot of people working from home, doing online shopping
Bowling club is great, it has a bar... but isn't open very often. Quizzes in the winter very popular
More frequent public transport – even one in the afternoon [quote]
Facebook is a resource for reaching out and connecting with neighbours, rather than using a physical space.

DREAMS

Active travel route between Stenton and Gifford
Improvements to walks and cycle loops to Pressmennan Woods, inspired by the improvements at Spott
Improved and additional walking routes – locations identified on a map
Improvements to the Common Land woodland near Stenton – potential location for a treehouse
Accessibility audit for Stenton, identifying locations for footpath improvements and connections to make safer routes for everyone to walk and cycle
A mobile library
A new bus route linking Dunbar, Stenton and East Linton, timed for the trains and bus links to Edinburgh.
Pingo links – dial-a-bus
Improved cycle surfaces and widening to allow safer cycle links throughout the area
Improved signage at Pitcox to improve safety
Free energy for everyone!

Appendix G - School Notes

INNERWICK PRIMARY SCHOOL

20.09.23

P1-3

16 pupils
3 walk to school
8 bus to school
1 bikes
7 have horses

Beaches they like - Italy! White sands, Torness, Dunbar, Belhaven

IDEAS

Pokémon card shop!
Traffic lights on the A1 - so everyone can be safe when they are crossing
More electricity towers
More swimming pools is fun
Warm water
Toys
Cycle paths
Ice cream shop at the school
Pizza shop
Race track
Pony track
Trampoline

P3-5

12 pupils
How they get to school
6 by car
3 by bus
3 on foot
10 cycle on the roads

They like to hear the birds
Nice to be out in nature
“If the world was the same it would just be boring”
Doing things outside
Being near the woods
“I live on a farm, I’m never bored”
“All the buildings are different”
Next to the park
“I can walk to the beach”
“There’s a hawk that lives near me”
“We don’t go near the door to, to leave the birds alone”
“We went to a wind turbine as a school trip”
Shop in Innerwick

P5-7

10 pupils
How they get to school
2 use feet
4 use bus
3 use car
1 taxi

Lots use walking/wheeling to get around
Best places; Thorntonloch, Belhaven, Skateraw, Whitesands, Cove, Pease Bay, Tynimghame
Sports are important
Woodlands are important

Appendix G - School Notes

STENTON PRIMARY SCHOOL

21.09.23

16 pupils

13 walk or wheel to school

CONCERNED ABOUT

Safety in the woods

Hills

Busy roads / fast cars

THEY LIKE TO VISIT

Dunbar

Haddington

Fort Kincaid

Edinburgh sometimes

It's relatively safe to cycle

Sometimes people park on the grass - boo!

Pressmennan woods is lovely, but concerned about the blue algae

Acorn woods

Giant conker tree in the church

Better lighting would be good

IDEAS

Allotments

Stenton treehouse fr everyone

Slide and zip line

Swings in the park

Big slide

Flying fox

Giant trampoline

Zip line between trees

Sandpit

Paddling pool

Two storey treehouse

A place to meet and relax

Swimming pool and stables

Soft play

Pump track for biking

Everyone included!

A magical woodland

Secret deck

Secret sweet shop

A gym - for everyone

Appendix H - Report back to Attendees

Innerwick Village Hall
20th September

Stenton Village Hall
21st September

Spott Village Hall
19th September

Oldhamstocks Village Hall
21st September

Thank you to everyone who helped at the Public Consultation events,
Took the time to fill in the survey,
Attended the events and gave their views

4 Events
 9 Facilitators
 38 attendees signed in

Invaluable input for YOUR Place Plan

East Lammermuir Place Plan 2023 - Report Back
October 2023

"There's a hawk that lives near me"

"I can walk to the beach!"

"Everyone should be safe when they are crossing the road!"

We visited Innerwick School and Stenton School, speaking to 54 pupils about what they like and want to see where they live

East Lammermuir Place Plan 2023 - Report Back
October 2023

Emerging Themes
- What is important to YOU?

We are yet to analyse the survey results in detail, there is still time to give your views!

Green Energy Infrastructure proposals - lack of information, many risks and uncertainties

Sustainability - community resilience and the environment

Protecting the character and landscape of East Lammermuir

Improving road and path safety, maintenance and access - throughout construction periods

Ecology and Geology - protecting the unique and valuable coastline, rivers, hills and woodland

Protecting and preserving heritage

Landfill

Buses - Improving services between villages and towns within East Lothian

Walking & Cycling - Improving links between villages, the coast and countryside within East Lammermuir and beyond

Schools and Halls - improving and taking care of the community facilities

Housing - currently allocated areas, and future housing needs

East Lammermuir Place Plan 2023 - Report Back
October 2023

Appendix J - Leaflets recording Second-round Consultation

Innerwick

East Lammermuir Place Plan 2024-2034; Get Involved!

East Lammermuir Community Council

NB these maps have been subsequently amended for inclusion in the East Lammermuir Local Place Plan Maps document.

What is a Local Place Plan?

A Place Plan is an expression of our aspirations and solutions for the East Lammermuir area, which can influence East Lothian Local Development Plan and priorities for future development, as well as help us identify and deliver our own projects.

The Place Plan belongs to us, and will

What's Happening Now?

A drop-in event was held at Innerwick Village Hall on 10th February. The event was advertised to all Innerwick Parish residents.

The round-table event had the maps from the first consultation, plus a screen showing the draft Place Plan and Felt Map online.

A discussion about the use of land and the importance of ensuring the sustainability of the village led to the draft map shown overleaf. This is open for discussion, we want YOUR views about these ideas through March before they are finalised for the Place Plan in mid-May.

8 attendees including members of IPWA and a local landowner discussed issues of land use in and around the village of Innerwick.

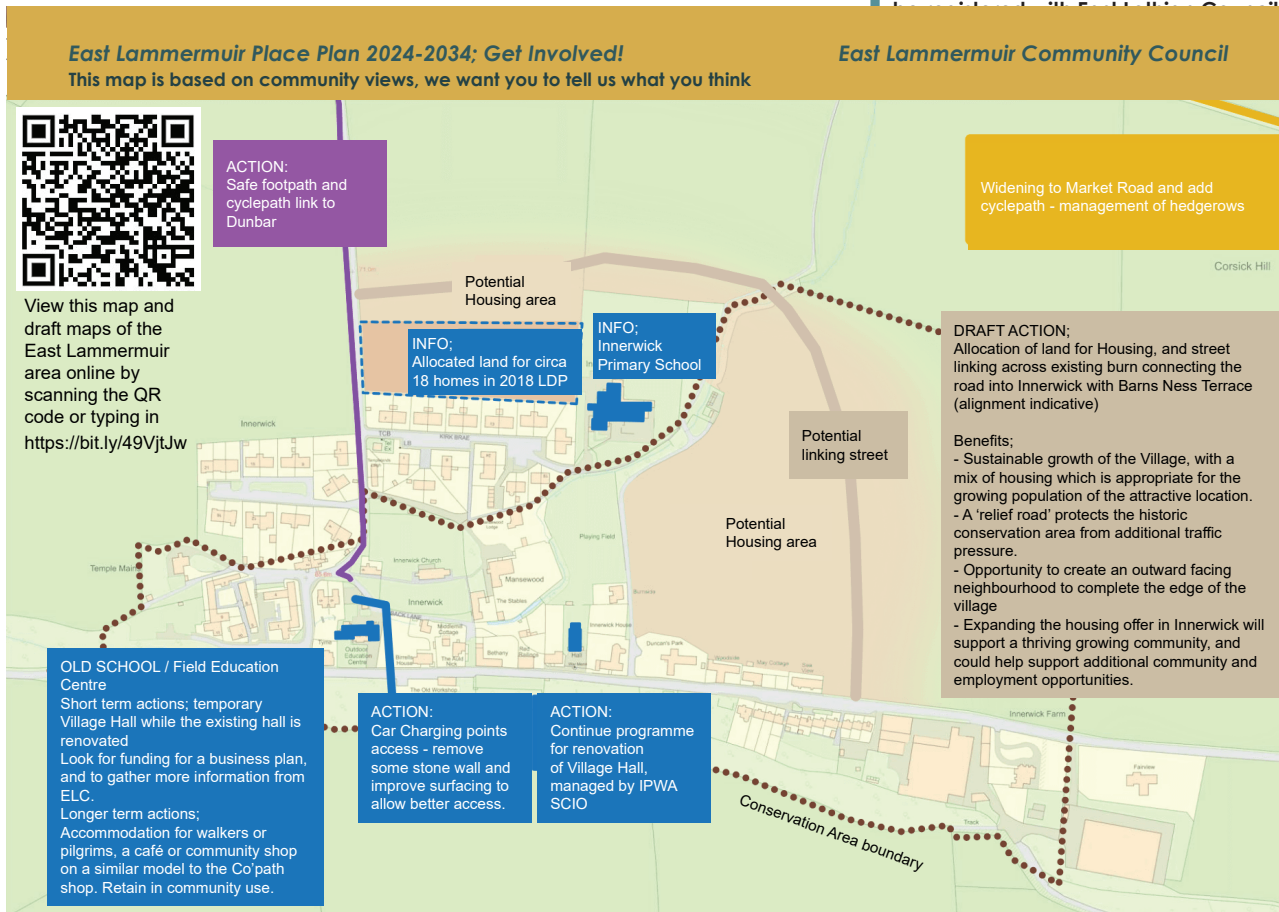
Thanks to all who attended the meeting!

What's Happening Next?

The ideas shown on this map represents the discussion so far. **YOUR VIEWS** will inform the final map. If you agree or disagree with what is shown, let us know!

There is plenty of time for anyone who was unable to attend to look at the draft document on the East Lammermuir Community Council website and on Felt Maps at the QR code on the map.

Contact Sarah at s.mcleary@smith-scott-mullan.co.uk with your comments



Appendix J - Leaflets recording Second-round Consultation

Oldhamstocks

NB these maps have been subsequently amended for inclusion in the East Lammerruir Local Place Plan Maps docuemnt.

East Lammerruir Place Plan 2024-2034; Get Involved!

East Lammerruir Community Council

What is a Local Place Plan?

A Place Plan is an expression of our aspirations and solutions for the East Lammerruir area, which can influence East Lothian Local Development Plan and priorities for future development, as well as help us identify and deliver our own projects.

The Place Plan belongs to us, and will be registered with East Lothian Council

What's Happening Now in Oldhamstocks?

A drop-in event was held at Oldhamstocks Village Hall on Tuesday 27th February. The event was advertised to all Oldhamstocks Parish residents.

The round-table event had the maps from the first consultation, plus a screen showing the draft Place Plan and Felt Map online.

A discussion about the use of land and the importance of ensuring the protection of land around the village led to the draft map shown overleaf. This is open for discussion, we want YOUR views about these ideas through March before they are finalised for the the Place Plan in mid-May.

15 attendees including members of OCA and a local landowner discussed issues of land use in and around the village of Oldhamstocks.

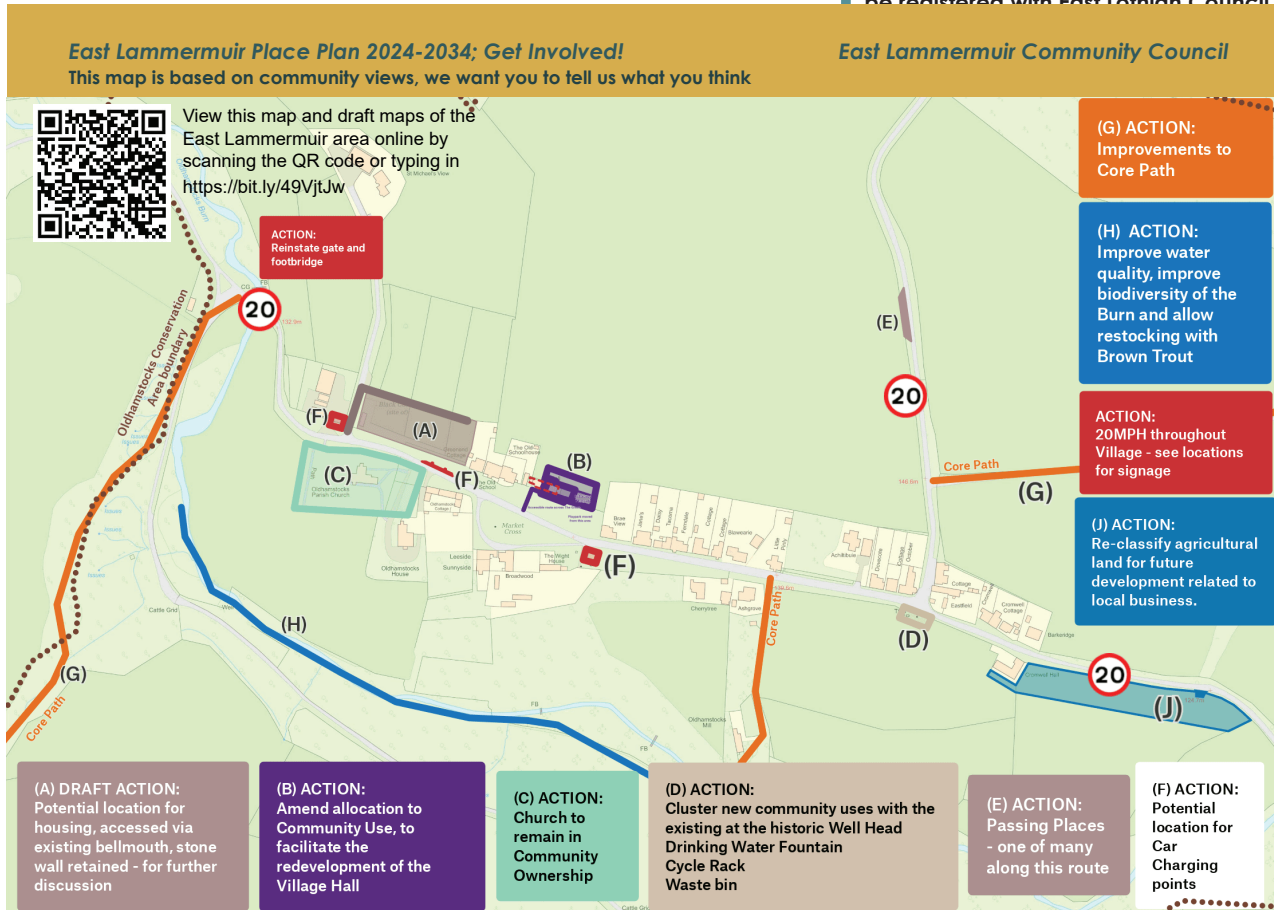
Thanks to all who attended the meeting!

What's Happening Next?

The ideas shown on this map represents the discussion so far. **YOUR VIEWS** will inform the final map. If you agree or disagree with what is shown, let us know!

There is plenty of time for anyone who was unable to attend to look at the draft document on the East Lammerruir Community Council website and on Felt Maps at the QR code on the map.

Contact OCA committee at info@oldhamstocks.org.uk or Sarah at s.mcleary@smith-scott-mullan.co.uk with your comments



Appendix J - Leaflets recording Second-round Consultation

Stenton

NB these maps have been subsequently amended for inclusion in the East Lammermuir Local Place Plan Maps document.

East Lammermuir Place Plan 2024-2034; Get Involved!

East Lammermuir Community Council

What is a Local Place Plan?

A Place Plan is an expression of our aspirations and solutions for the East Lammermuir area, which can influence East Lothian Local Development Plan and priorities for future development, as well as help us identify and deliver our own projects.

The Place Plan belongs to us, and will be registered with East Lothian Council

What's Happening Now in Stenton?

A drop-in event was held at Stenton Village Hall on Tuesday 27th February. The event was advertised to all Stenton Parish residents.

The round-table event had the maps from the first consultation, plus a screen showing the draft Place Plan and Felt Map online.

A discussion about the use of and access to land around the village led to the draft map shown overleaf. This is open for discussion, we want YOUR views about these ideas through March before they are finalised for the the Place Plan in mid-May.

6 attendees including members of East Lammermuir Community Council discussed issues of land use in and around the village of Stenton.

Thanks to all who attended the meeting!

What's Happening Next?

The ideas shown on this map represents the discussion so far. **YOUR VIEWS will inform the final map. If you agree or disagree with what is shown, let us know!**

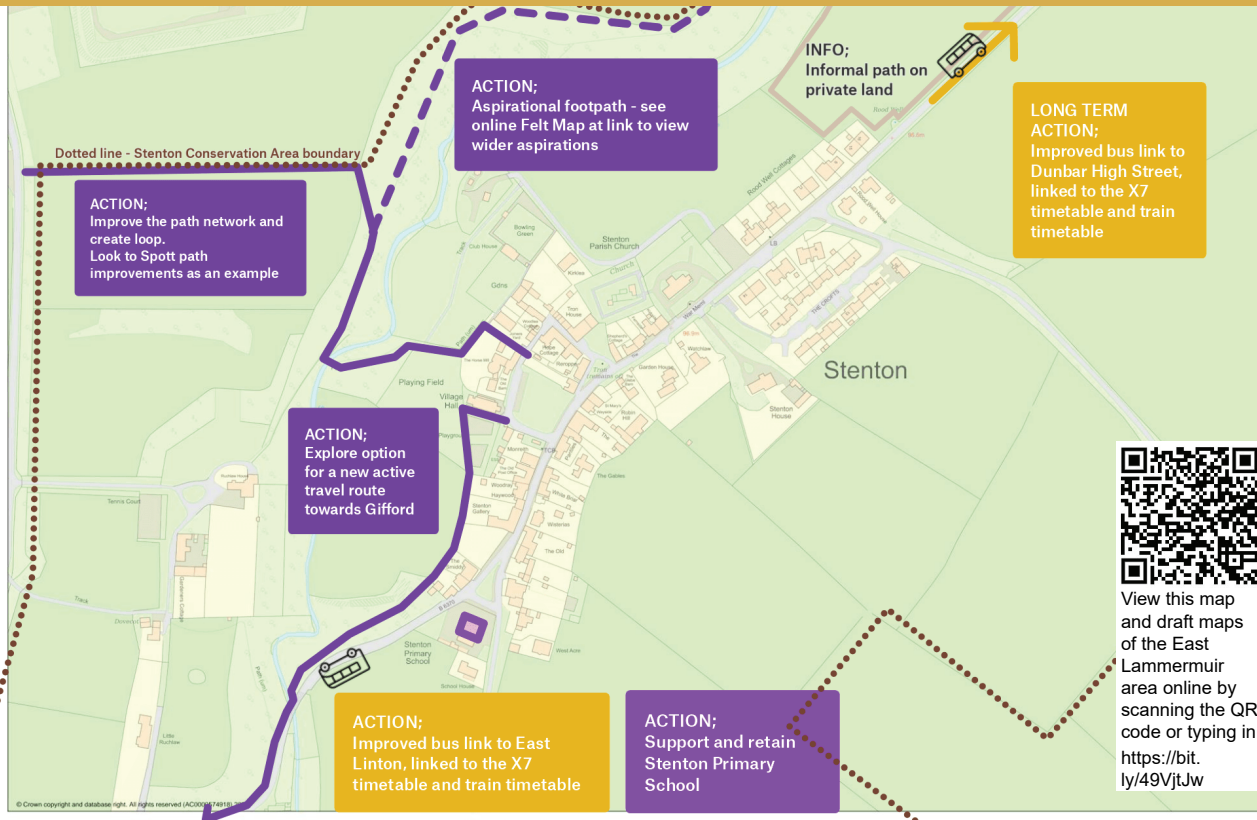
There is plenty of time for anyone who was unable to attend to look at the draft document on the East Lammermuir Community Council website and on Felt Maps at the QR code on the map.

Contact Sarah at s.mcleary@smith-scott-mullan.co.uk with your comments

East Lammermuir Place Plan 2024-2034; Get Involved!

This map is based on community views, we want you to tell us what you think

East Lammermuir Community Council



Appendix J - Leaflets recording Second-round Consultation

Spott

NB these maps have been subsequently amended for inclusion in the East Lammermuir Local Place Plan Maps docuemnt.

East Lammermuir Place Plan 2024-2034; Get Involved!

East Lammermuir Community Council

What is a Local Place Plan?

A Place Plan is an expression of our aspirations and solutions for the East Lammermuir area, which can influence East Lothian Local Development Plan and priorities for future development, as well as help us identify and deliver our own projects.

The Place Plan belongs to us, and will be registered with East Lothian Council

What's Happening Now in Spott?

A drop-in event was held at Spott Village Hall on Tuesday 5th March. The event was advertised to all Spott Parish residents.

The round-table event had the maps from the first consultation, plus a screen showing the draft Place Plan and Felt Map online.

A discussion about the use of land and the importance of ensuring the protection of land around the village led to the draft map shown overleaf. This is open for discussion, we want YOUR views about these ideas through March before they are finalised for the the Place Plan in mid-May.

11 attendees including members of the Spott Community Association discussed issues of land use in and around the village of Spott.

Thanks to all who attended the meeting!

What's Happening Next?

The ideas shown on this map represents the discussion so far. YOUR VIEWS will inform the final map. If you agree or disagree with what is shown, let us know!

There is plenty of time for anyone who was unable to attend to look at the draft document on the East Lammermuir Community Council website and on Felt Maps at the QR code on the map.

Contact Sarah at s.mcleary@smith-scott-mullan.co.uk with your comments

East Lammermuir Place Plan 2024-2034; Get Involved!

This map is based on community views, we want you to tell us what you think

East Lammermuir Community Council

